

6815 Shiloh Unity Road

Lancaster, SC 29720

TURNKEY VENUE



Shiloh Unity Rd

Available for Sale

Exceptional opportunity to acquire a fully operational event venue at 6815 Shiloh Unity Rd, Lancaster, SC. Situated on approximately 10.5 acres across two parcels, this 6,058± SF property offers a turnkey solution for an investor or owner-user seeking an established events facility in a growing market.

The venue is already generating booking inquiries without formal marketing, reflecting strong organic demand and immediate revenue potential. The flexible layout and zoning support a variety of uses, including weddings, corporate events, and private gatherings, with a maximum occupancy of 250 guests.

Expansive acreage allows for on-site parking, outdoor ceremonies, and future expansion, making this a rare opportunity with both current income and long-term growth potential.

Property Details

Address	6815 Shiloh Unity Rd, Lancaster, SC 29720
Availability	10.50 AC/6,058 SF
Use	Turnkey Venue
Parcel	0054-00-029.04 & 0054-00-029.05
Zoning	RUB (Rural Business)
Nearby Traffic Counts	Old Camden Monroe Highway 619 VPD
For Sale	Email for Details



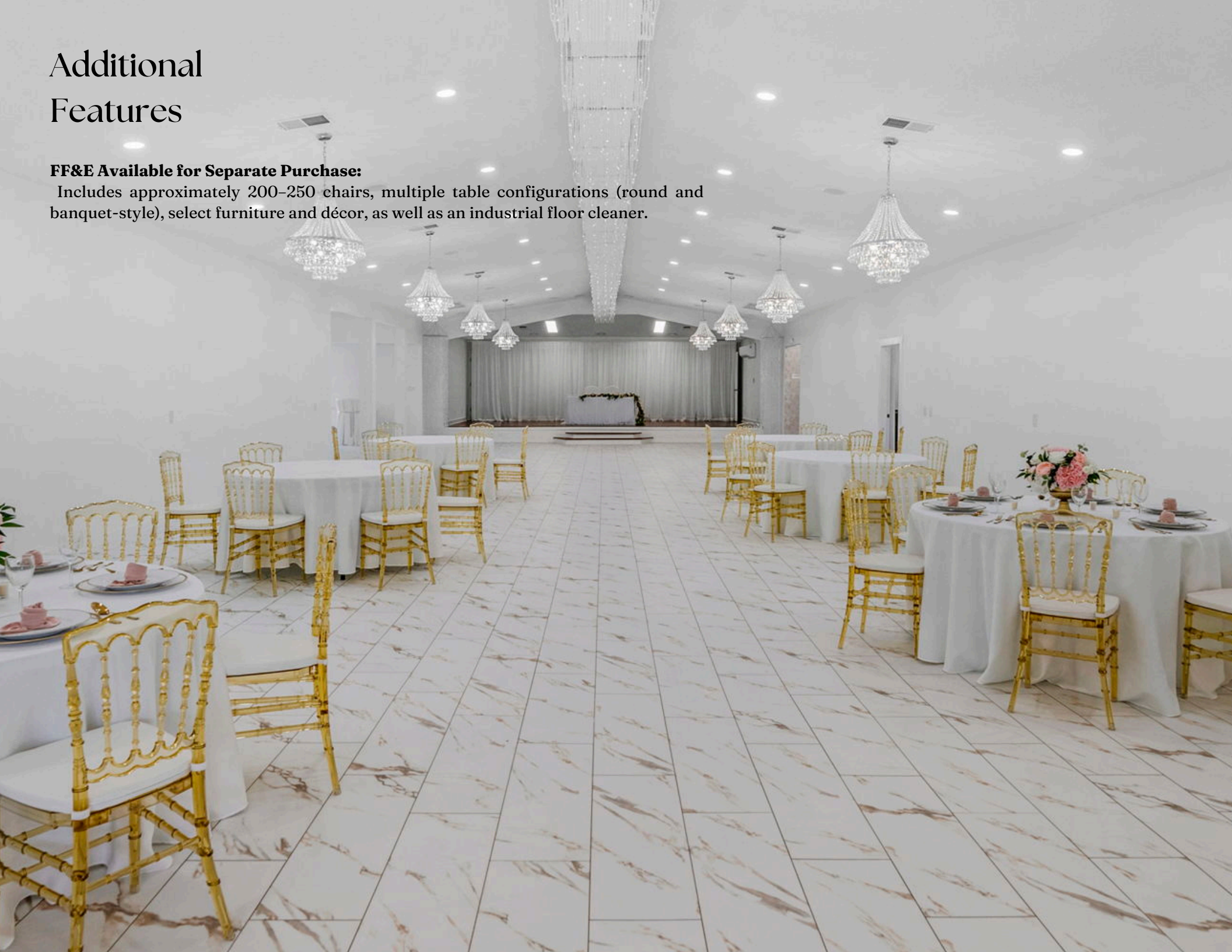
Demographics

RADIUS	2 MILE	5 MILE	10 MILE
2030 Population Projection	1,120	5,460	34,477
Household Income Median Avg	\$66,057	\$64,406	\$62,787
Household Income	\$82,626	\$79,800	\$77,324
Daytime	75	452	5,331

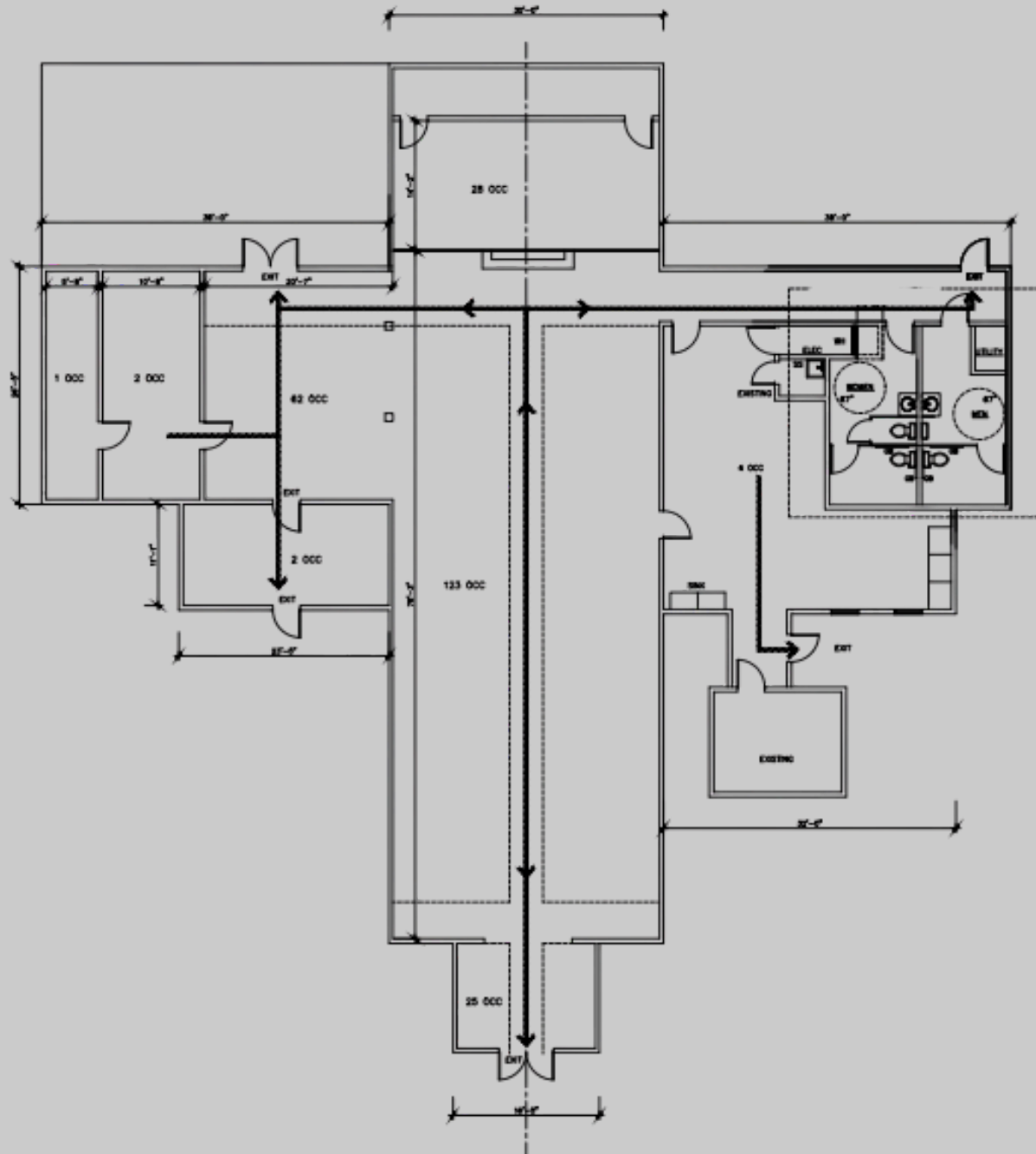
Additional Features

FF&E Available for Separate Purchase:

Includes approximately 200-250 chairs, multiple table configurations (round and banquet-style), select furniture and décor, as well as an industrial floor cleaner.



Floor Plan





Contact for Details

Roman Voronin

(704) 651-7622

roman@voroninrealty.com



VORONIN REALTY
COMMERCIAL
IN GOD WE TRUST

This information has been obtained from sources believed to be reliable.

While we do not doubt its accuracy, we have not verified it and make no guarantee, warranty or representation to independently confirm its accuracy and completeness.