

FOR LEASE
1560 Harlem Road
 Cheektowaga, New York

UP TO 3,100 ± SF INDUSTRIAL / OFFICE SPACE AVAILABLE FOR LEASE

ROMAR PROFESSIONAL / INDUSTRIAL PARK

BUILDING FEATURES	
Total Building Size	47,635 ± Sq. Ft.
Space Available	Suite S01: 1,250 ± Sq. Ft.
	Suite S02: 1,200 ± Sq. Ft.
	Suite W06: 3,100 ± Sq. Ft.
	Suite W14: 3,000 ± Sq. Ft.
Lot Size	4.57 ± Acres
Zoning	M-1

Property Highlights

- Industrial and office space available
- Multiple suites available ranging from 1,200 ± Sq. Ft. to 3,100 ± Sq. Ft.
- Office suites feature open layouts, private offices, and restrooms
- Suites W06 and W14 feature large overhead door access, warehouse space, 16' - 21' ceilings, small offices, and restrooms
- Central to all of Western New York
- Minutes to NYS Thruway, Downtown Buffalo, and Buffalo Niagara International Airport
- Ideal for: warehouse, light manufacturing, professional office, medical office

For more information, contact:

RICHARD RYALL LEDYARD
 Real Estate Salesperson
 716.9852.7500 x113 – office
rledyard@pyramidbrokerage.com

14 Lafayette Square
 Suite 1900
 Buffalo, New York 14203
 phone: +1 716 852-7500

pyramidbrokerage.com

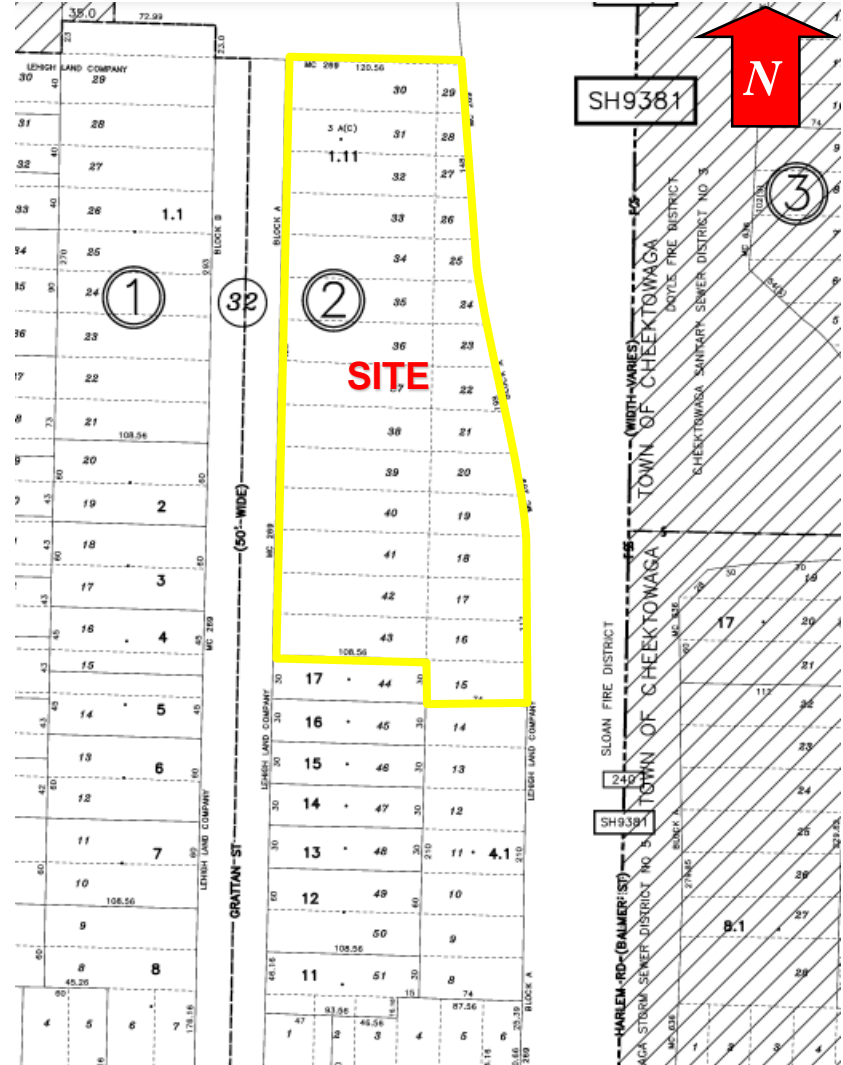


DEMOGRAPHICS	1 MILE	3 MILE	5 MILE
Population	11,662	106,097	302,009
Average Household Income	\$63,571	\$55,491	\$61,737

FOR LEASE
1560 Harlem Road
 Cheektowaga, New York



Location Map

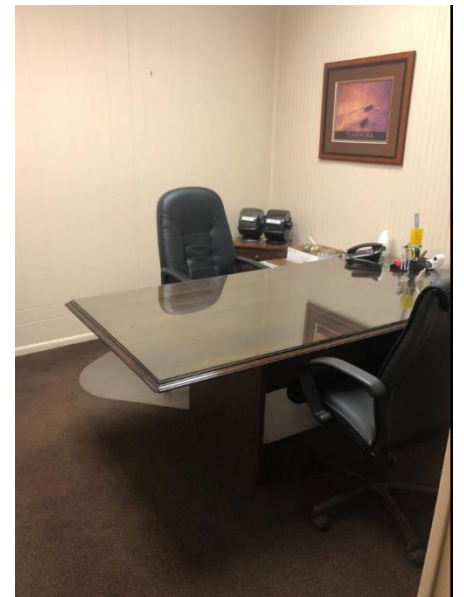
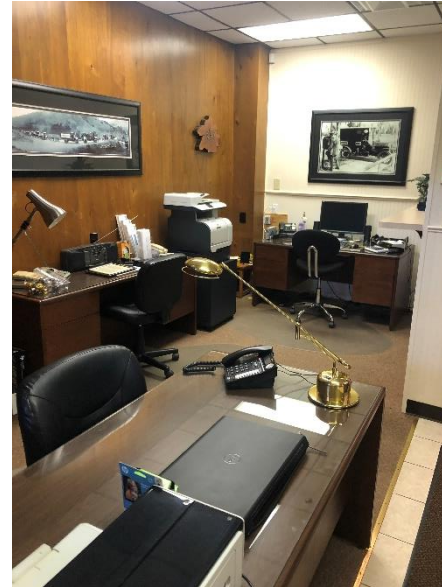


Tax Map

FOR LEASE

1560 Harlem Road

Cheektowaga, New York



Interior Photos