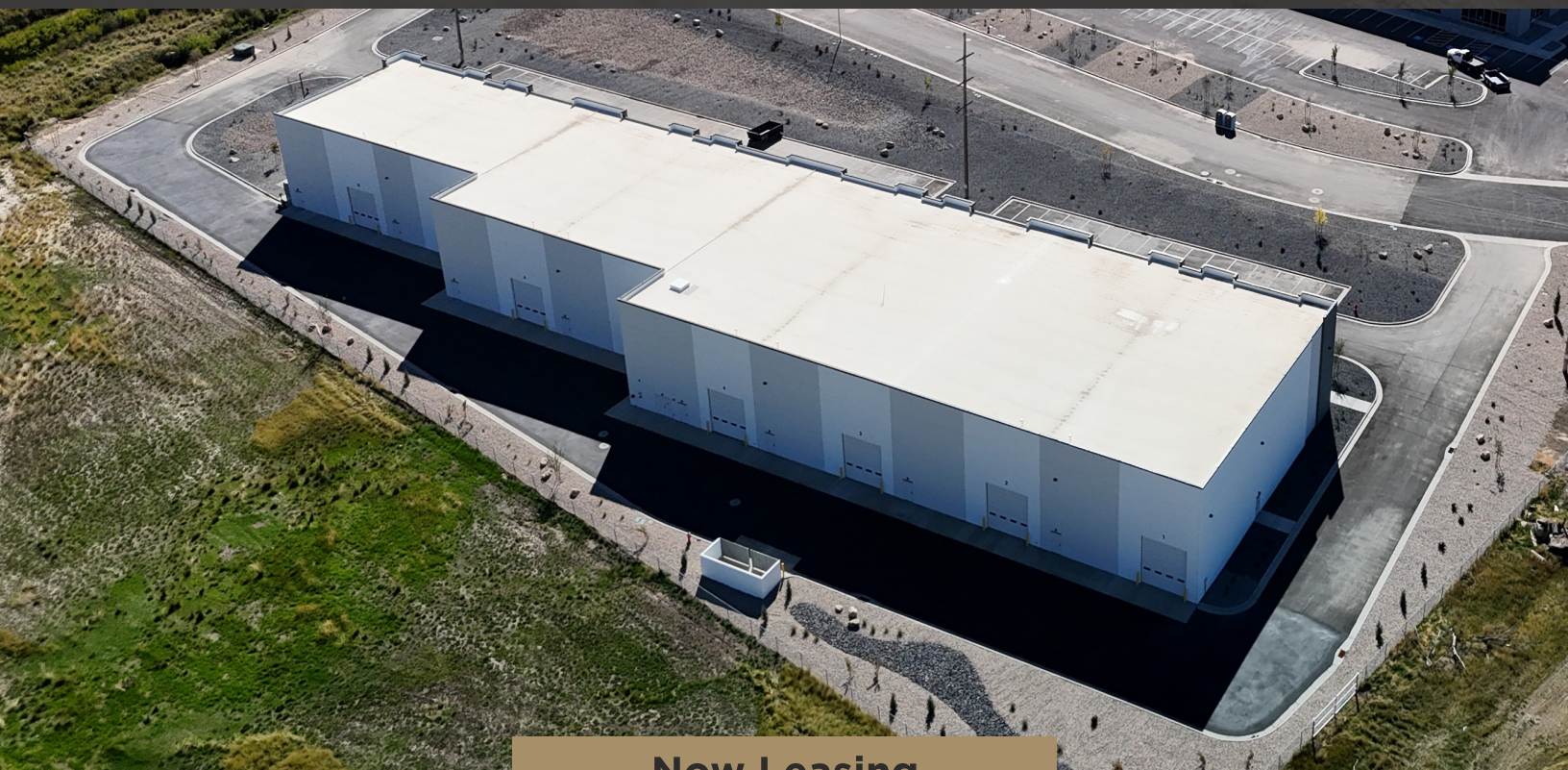




BEN LOMOND

B U S I N E S S P A R K



Now Leasing

Building 2 | ±34,709 SF
1605 W 2350 N | Farr West, UT





SITE PLAN

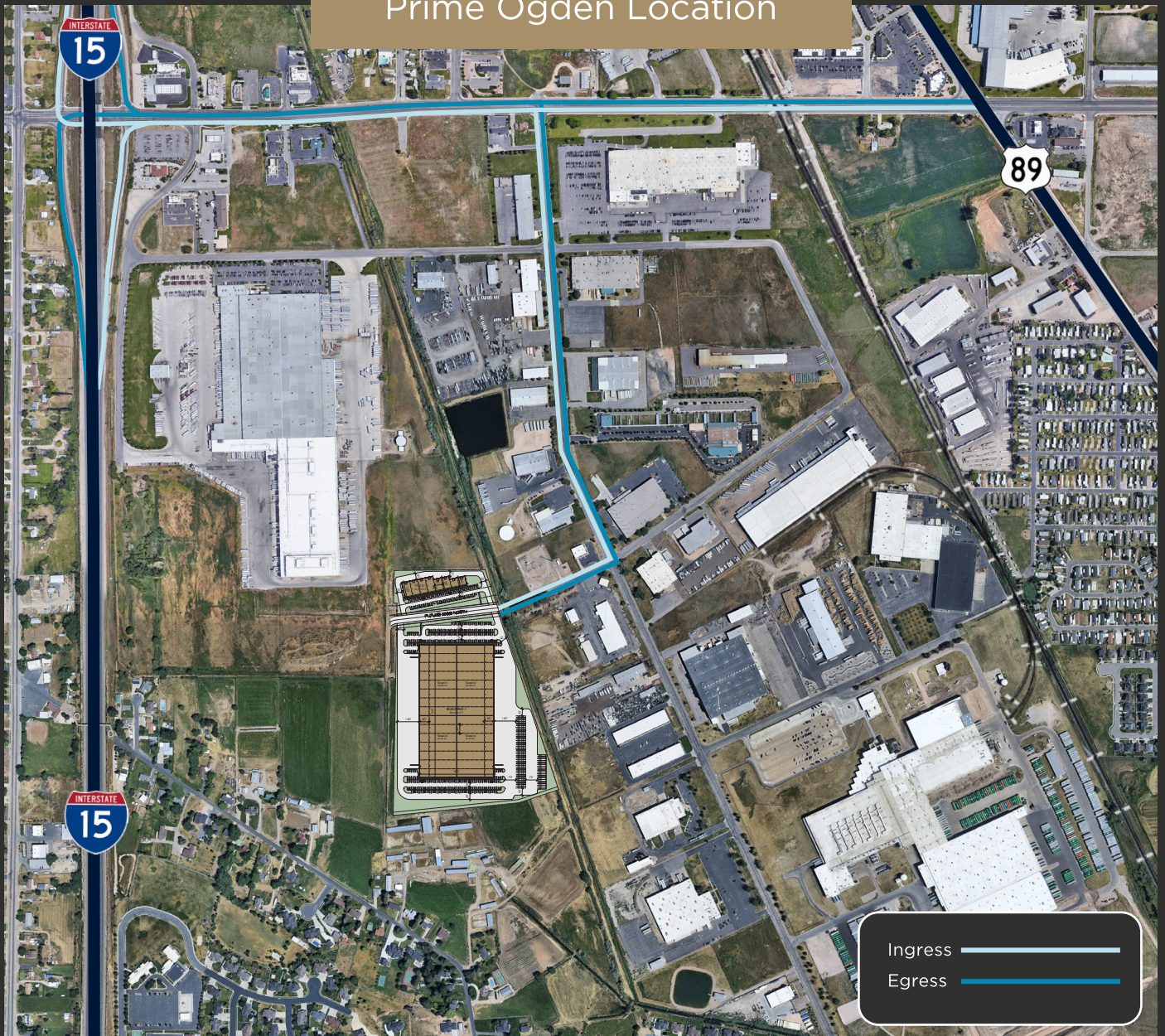
BEN LOMOND

BUSINESS PARK



Flexible options for multiple businesses and various company setups available.

Prime Ogden Location



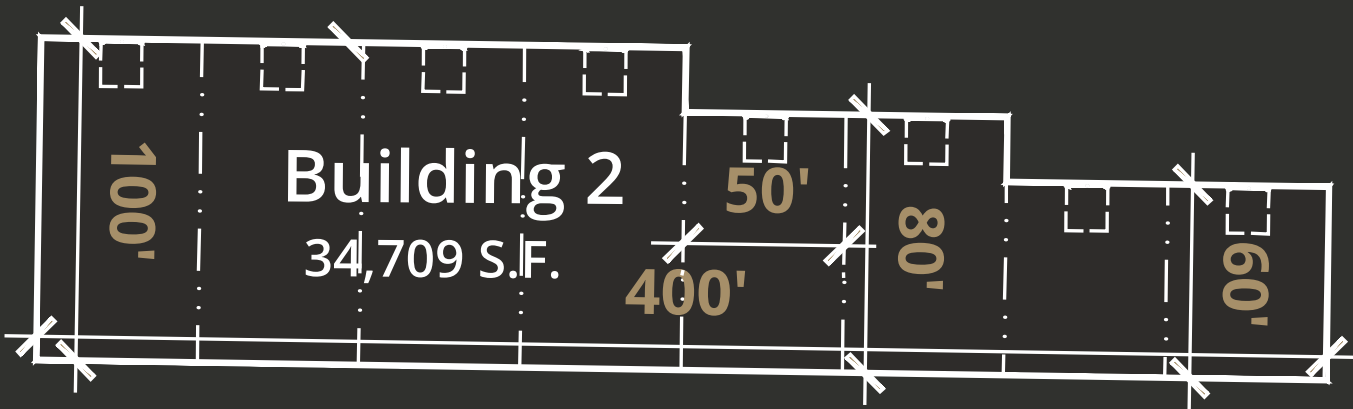


State-of-the-Art Building

(Flex Configuration, Build-to-Suit)

Available:..... ±34,709 SF

Zoned: M-1



Building 2

Building Size:	±34,709 SF
Office:	Build to Suit
Grade Level Doors:	8
Clear Height:	28'
Fire Suppression:	ESFR
Auto Parking:	90 Striped Stalls

For Sale or Lease

