

FOR LEASE

116/117 - 15315 66A Avenue, Surrey, BC

Warehouse with Grade Door & Yard

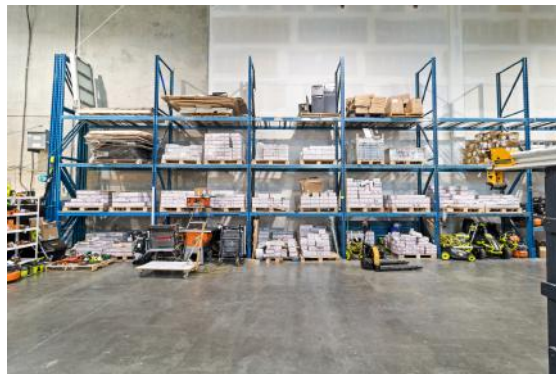
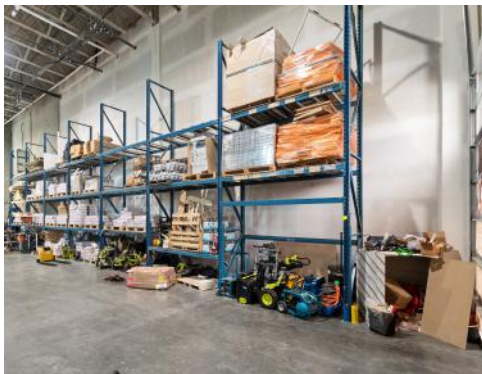
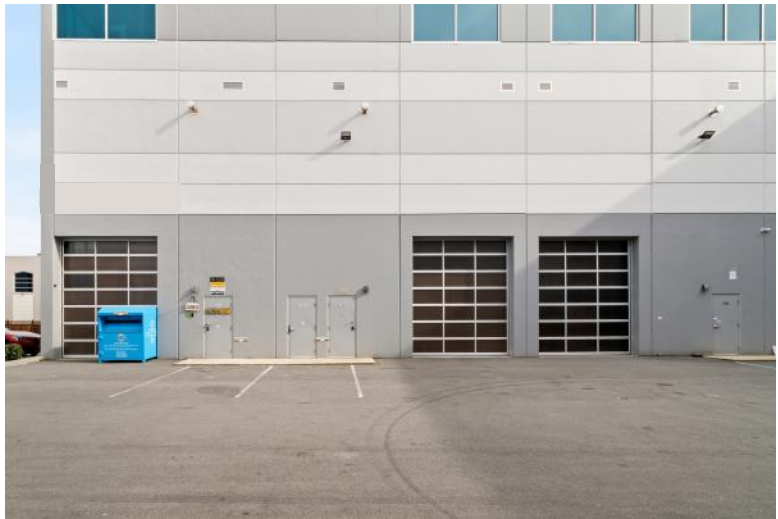
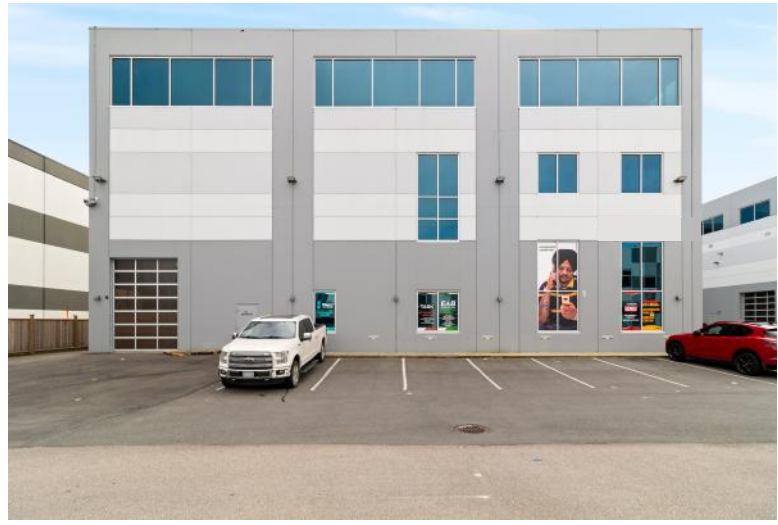


HARMAN JOHAL

Personal Real Estate Corporation

778.829.7185 | info@harmanjohal.com

 **ROYAL LePAGE®**
COMMERCIAL™



15315 66A Avenue, Surrey, BC

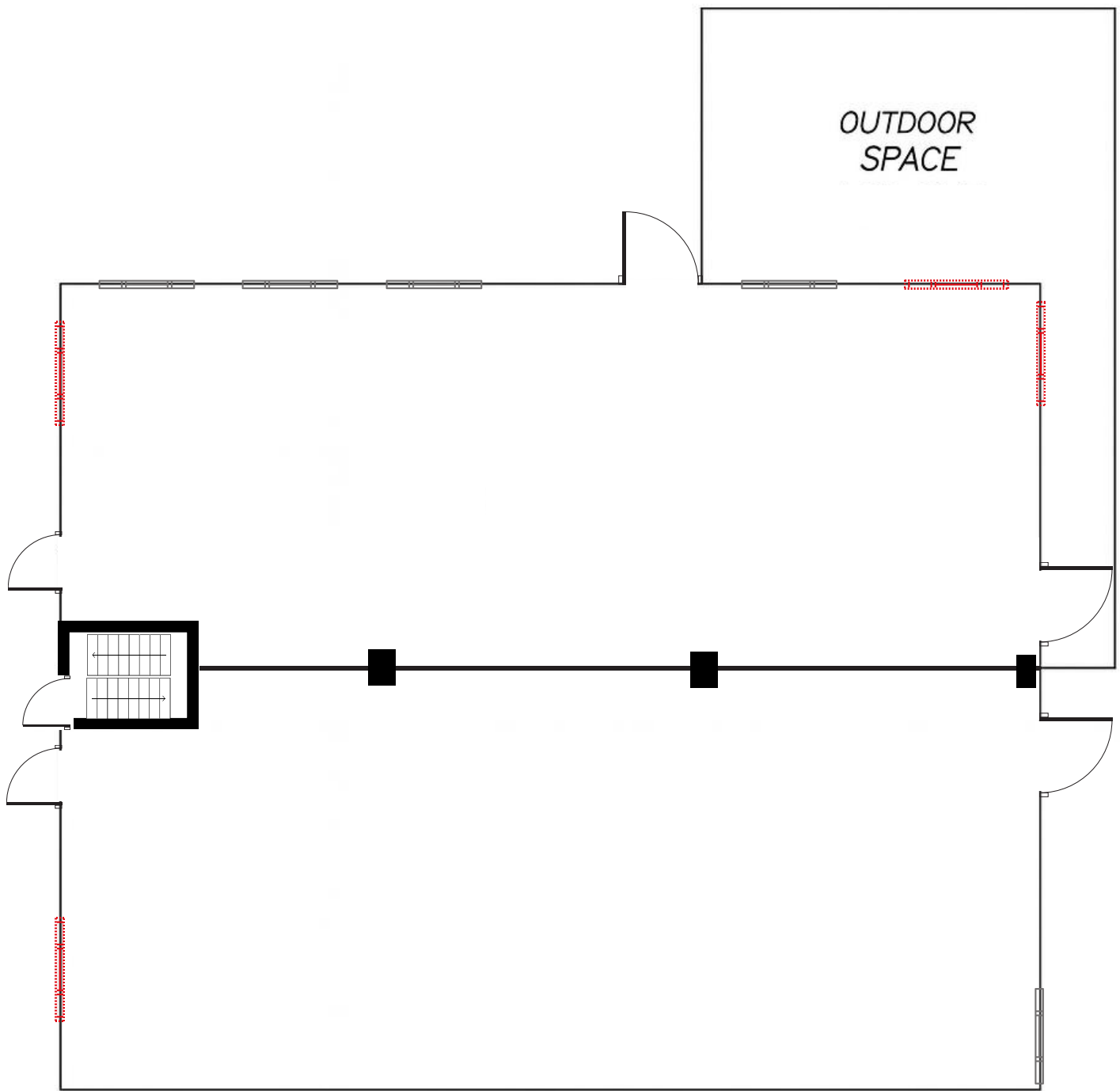
We are offering a prime opportunity to lease up to 4,910 sq. ft. of well-located warehouse space, ideal for businesses in need of flexible storage or operational space. This facility features high ceilings with 30' clear height and convenient access to major transportation routes. The CD zoning allows light impact industrial uses, warehouse storage, and distribution centers for sorting and transporting goods. Contact us today to learn more and schedule a tour!

PROPERTY FEATURES

- ESFR fire suppression system
- Ceiling fans
- Gas-fired heaters
- LED lighting
- CD (Comprehensive Development) Zoning:
Permitted uses include light impact industrial, warehousing, distribution, office, and more
- 4 bay doors (Grade)
- Racking system (suitable for warehousing and storage solutions)
- Grade loading door (for efficient loading and unloading)
- Parking for large vehicles (accommodating trucks and delivery vehicles)
- 3-phase electrical service (200A 347/600V) per unit

PROPERTY DETAILS

TOTAL BUILDING AREA	~ 4,910 SQ FT
AVAILABLE YARD	~ 1,265 SQ FT
ZONING	CD (BYLAW BL19823)
AVAILBLE DATE	IMMEDIATELY
BASE RENT	NEGOTIABLE
ADDITIONAL RENT	~ \$9.50/SQ FT



 Grade Door