



For Lease

Multi-Tenant Office

101 25th Street North, Birmingham, AL 35203

PROPERTY HIGHLIGHTS:

- Located on a prominent full corner lot with frontage on 1st Ave North and great visibility from Red Mountain Expressway
- Wired with fiber connectivity; voice and data in place
- Walking distance to banks, retail, and some of Birmingham's hottest bars and restaurants
- 94 parking places in a surface lot adjacent to the building at no additional charge
- Excellent access to 1-20 / 1-59, Highway 280 / Red Mountain Expressway
- Purchase opportunity available

Contact

Emily Byrd

205.565.6154

ebyrd@cr-endeavors.com

CR-ENDEAVORS.COM

For Lease

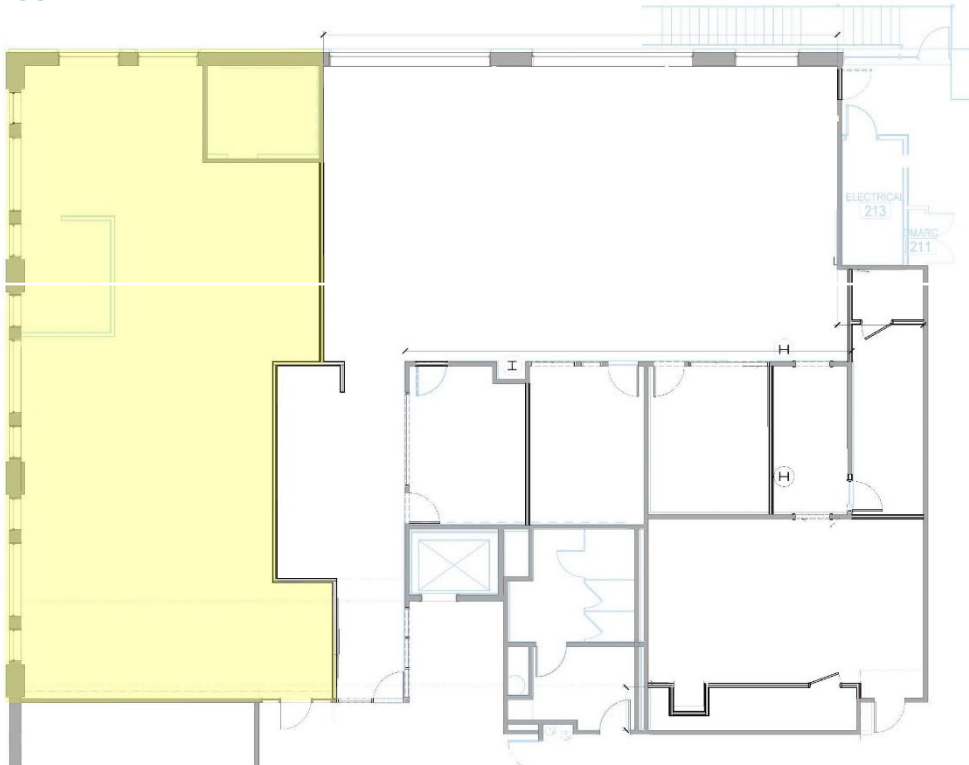
Multi-Tenant Office

ADDRESS 101 25 Street North, Birmingham, AL 35203

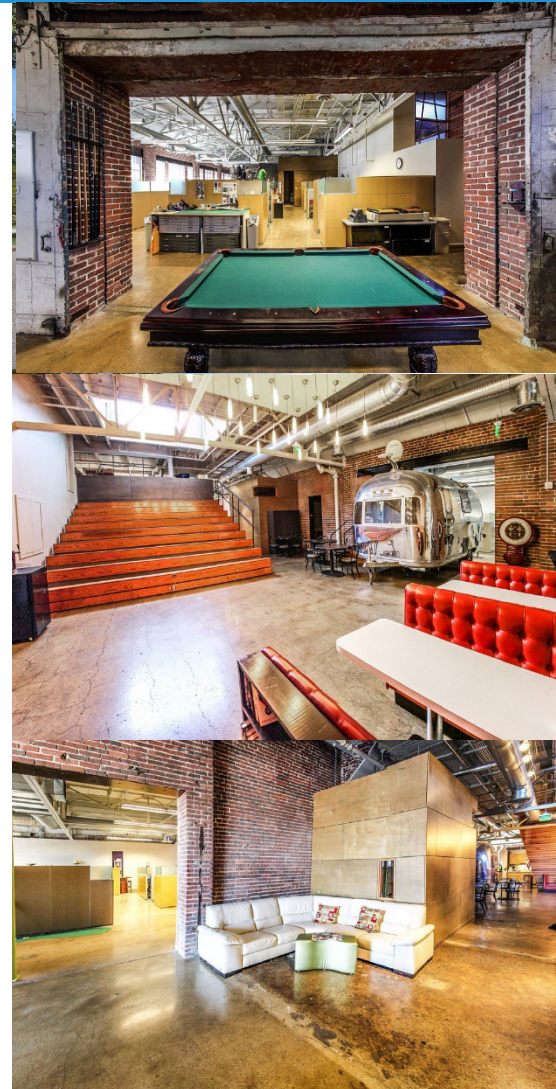
BUILDING SIZE 2nd Floor, ~2,019 Rentable SF (can be subdivided)

LEASE RATE Contact Broker

FLOOR PLAN:



SITE PLAN:



Contact

Emily Byrd

205.565.6154

ebyrd@cr-endeavors.com

CR-ENDEAVORS.COM