

225

HIGH RIDGE ROAD

67K SUBLEASE AVAILABLE
IN STAMFORD, CT

NEWMARK

James Ritman
917-647-9884 | james.ritman@nmrk.com

Benjamin Goldstein
914-610-5954 | benjamin.goldstein@nmrk.com



BUILDING FEATURES

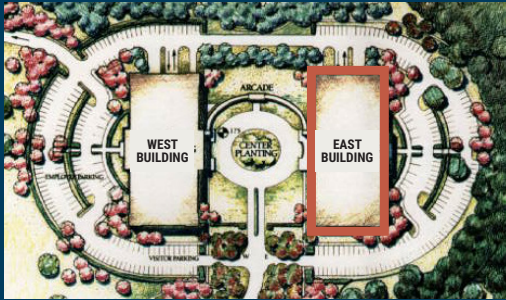
The design, by Skidmore, Owings & Merrill, emphasizes symmetry and a stately architecture that incorporates brick, concrete, and large windows for natural light.

- Classic building exterior
- Signature arched roof
- Situation on 14.6 acres of landscaped land
- Jogging trails
- English garden



225

HIGH RIDGE ROAD

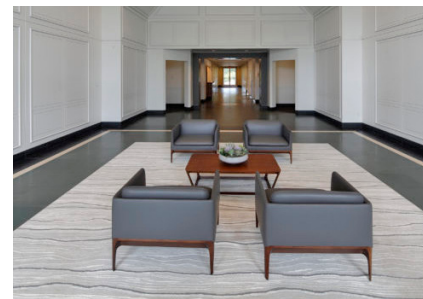


SPECIFICATIONS

East Building	Partial 2 nd 24,662 SF Entire 3 rd 41,916 SF
Rent	Upon Request
Possession	Immediate
Term	June 30, 2027

AMENITIES

- 24-hour controlled access
- Private shuttle to train station
- Full-service cafeteria
- Private dining rooms
- Fully managed fitness center
- Monument signage



NEWMARK

The information contained herein has been obtained from sources deemed reliable but has not been verified and no guarantee, warranty or representation, either express or implied, is made with respect to such information. Terms of sale or lease and availability are subject to change or withdrawal without notice.

4

MINUTES TO MERRITT PARKWAY

6

MINUTES TO INTERSTATE 95

7

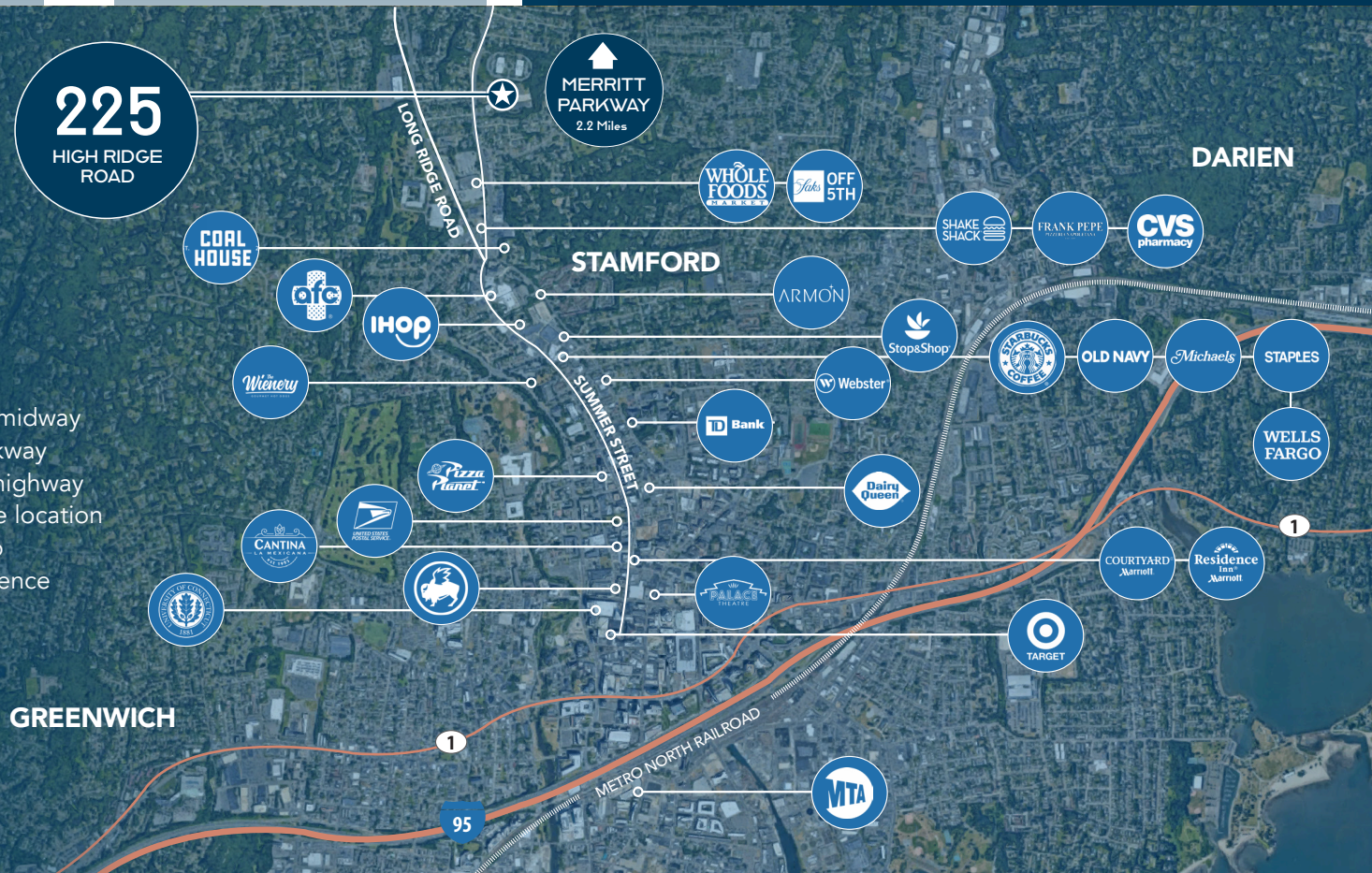
MINUTES TO STAMFORD TRAIN STATION

22

MINUTES TO WESTCHESTER AIRPORT

PRIME LOCATION

The complex's location, midway between the Merritt Parkway and I-95, provides easy highway access, making it a prime location for businesses looking to establish a regional presence in Fairfield County.

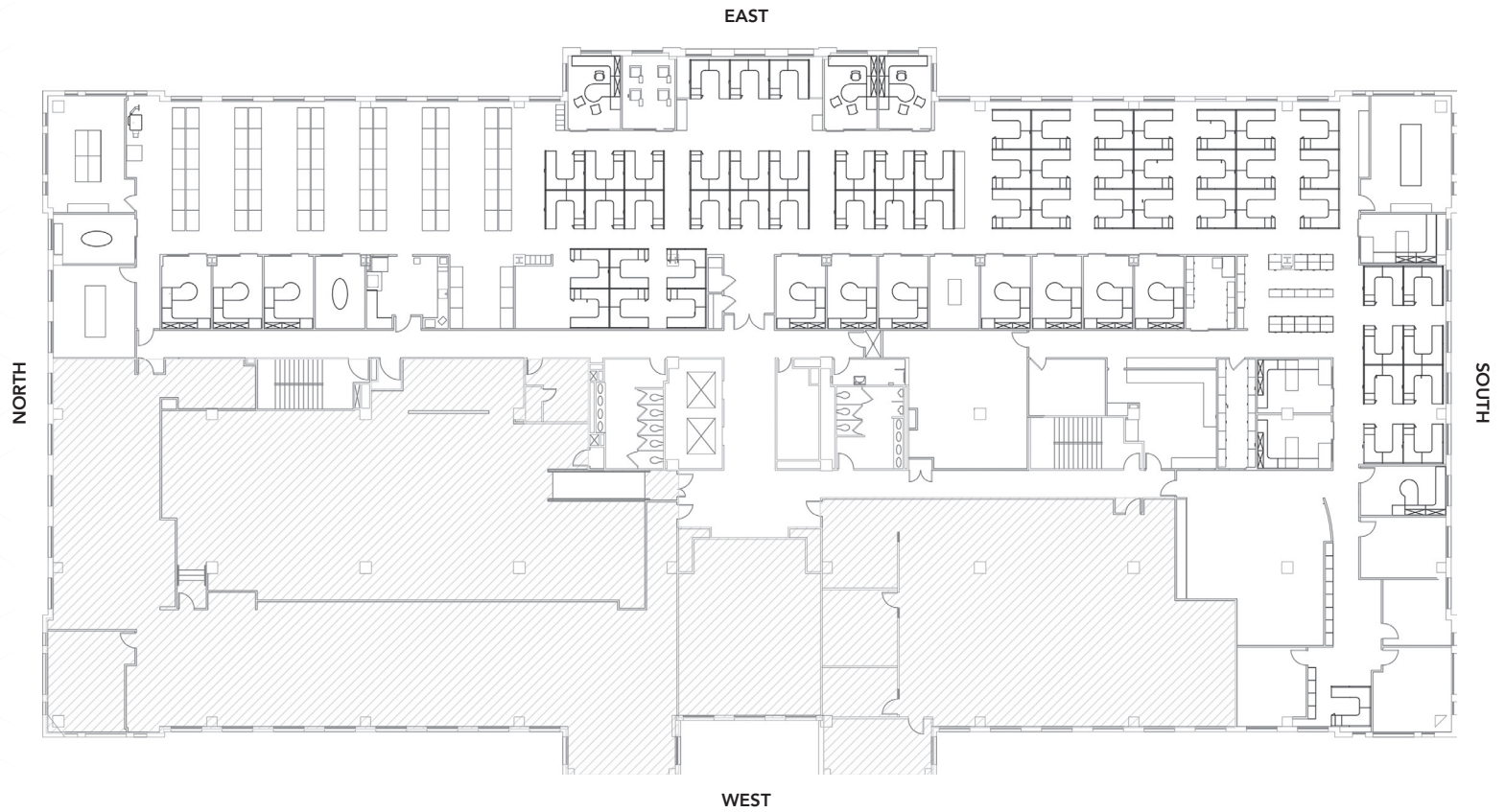


225

HIGH RIDGE ROAD

24,662 SF

2nd Floor



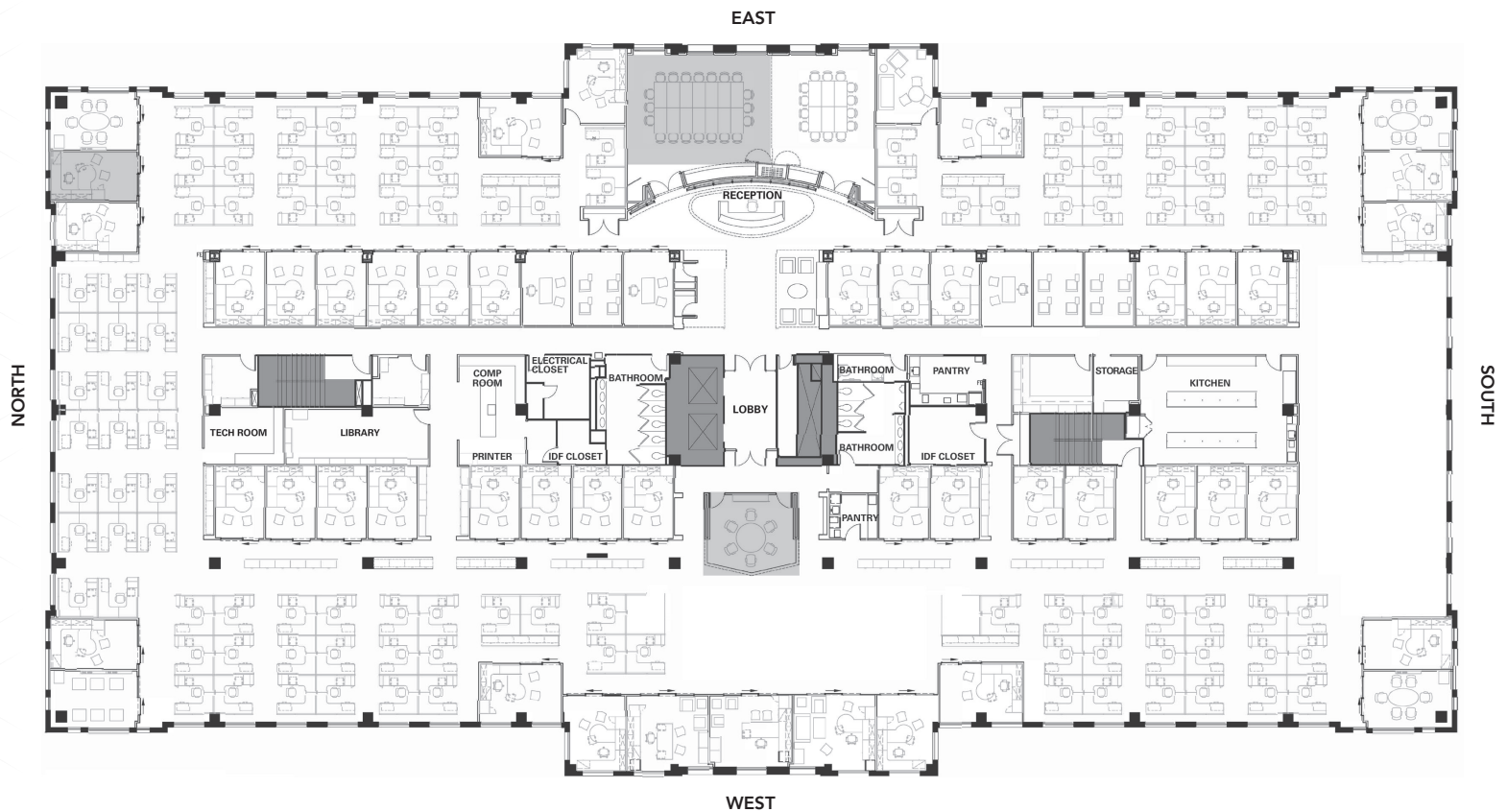
NEWMARK

225

HIGH RIDGE ROAD

41,916 SF

3rd Floor



NEWMARK

James Ritman
917-647-9884 | james.ritman@nmrk.com

Benjamin Goldstein
914-610-5954 | benjamin.goldstein@nmrk.com

Timothy R. Rorick
Designated Broker | tim.rorick@nmrk.com