

FOR LEASE | THREE INDUSTRIAL BUILDINGS | ZONING CS

**0 & 103 | 108 | 115
W WEBSTER ST**



A portion of this property is located within the Flood Plain described by FEMA



Property Highlights



ADDRESS	0 & 103 W Webster St., Madison, TN 37115
PRICE	\$5,500 / Month NNN
OPEX	\$___ PSF
AVAILABLE	1+ Acres
HIGHLIGHTS	Zoned CS - Commercial Services Outside Storage Use Pad in Place

A portion of this property is located within the Flood Plain described by FEMA



Property Highlights



ADDRESS 108 W Webster St., Madison, TN 37115

PRICE \$13.00 PSF | NNN

OPEX \$1.79 PSF

AVAILABLE 2,000± SF Up To 19,320± SF

HIGHLIGHTS (1) 13' x 16' Automatic Drive-In Door

(1) 12' x 16' Dock Door

(1) 12' x 12' Modified Dock Door

10,000± SF Warehouse

9,320± SF Office

14' Clear Height

Not in Floodplain

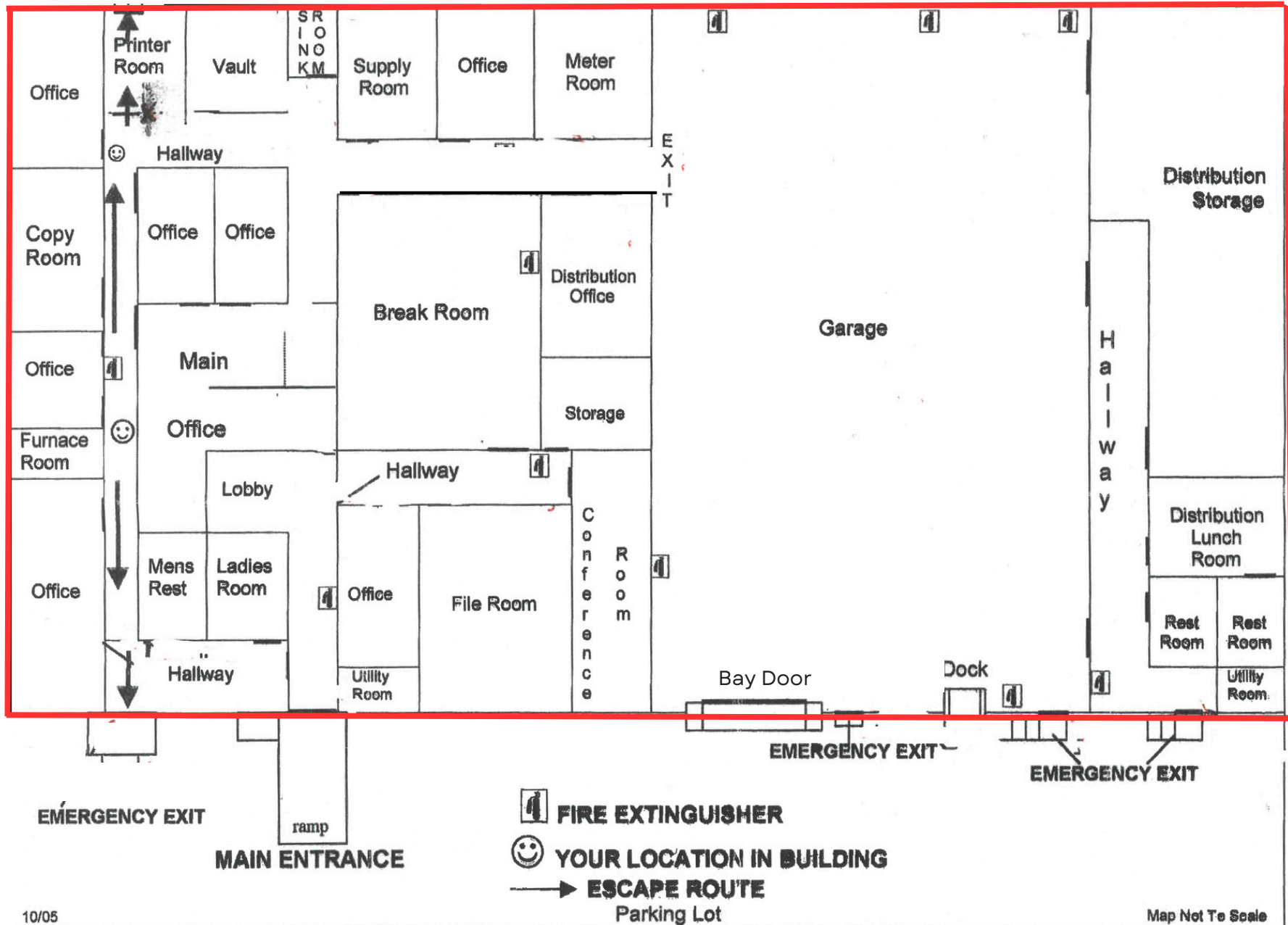
Zoned CS - Commercial Services



Floor Plan | 108 W Webster Street

MAP NOT TO SCALE

19,320± SF



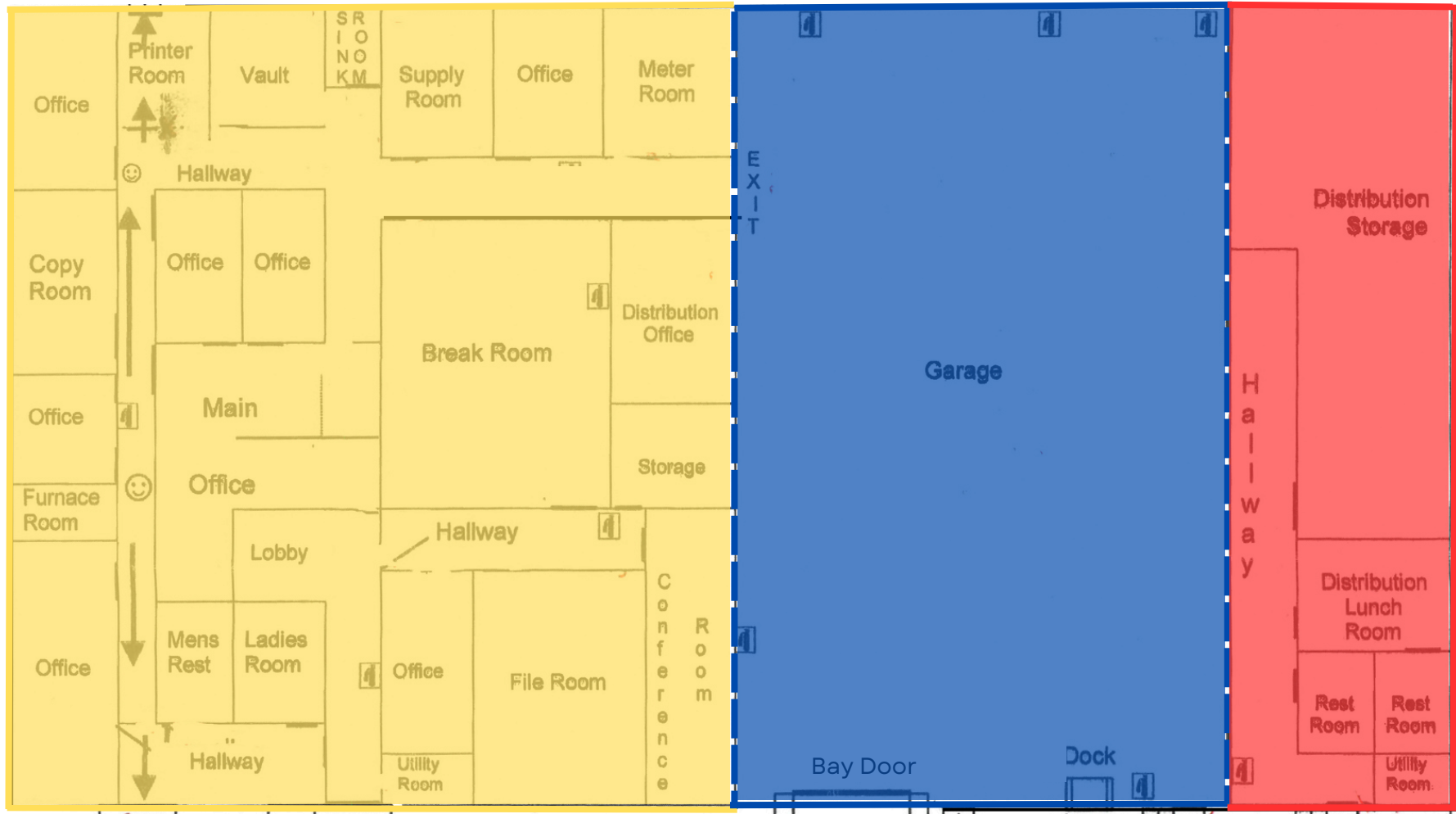
10/05

Map Not To Scale

This information contained herein has been obtained from sources deemed to be reliable but is provided for demonstrative purposes only. This information is provided without any guarantee, its accuracy and reliability should be verified by interested parties, and it is subject to change without notice or obligation. Horrell Company assumes no responsibility for the accuracy or reliability of the information herein.

Floor Plan | 108 W Webster Street

MAP NOT TO SCALE



A
7,320± SF
OFFICE USE

B
10,000± SF
RETAIL / OFFICE
USE

C
2,000± SF
RETAIL /
OFFICE USE

Property Highlights



ADDRESS 115 W Webster St., Madison, TN 37115

PRICE \$12.00 | NNN

OPEX \$3.07 PSF

AVAILABLE 5,400± & 5,856± SF | Total: 11,256± SF

HIGHLIGHTS (1) 12' x 14' Automatic Drive-In Door

(1) 10' x 12' Automatic Drive-In Door

(1) 8' x 8' Drive-In Door

Skylights & LED Lighting

Gas Heat & Exhaust Fan

3-Phase Electrical

Outside Fenced Storage Available

Zoned CS - Commercial Services



Ample Fenced Parking



Clear Span in Half of Building

A portion of this property is located within the Flood Plain described by FEMA





Contact

Laura Grider

615-604-7425

lgrider@horrellcompany.com



615-256-7114

www.horrellcompany.com

3030 Sidco Drive

Nashville, TN 37204

