

For Lease

John Carpin

Senior Vice President
+1 804 267 7216
john.carpin@colliers.com

Malcolm Randolph, SIOR

Senior Vice President
+1 804 267 7208
malcolm.randolph@colliers.com

Jimmy Martin, SIOR

Senior Vice President
+1 804 267 7218
jimmy.martin@colliers.com

Catherine Walker

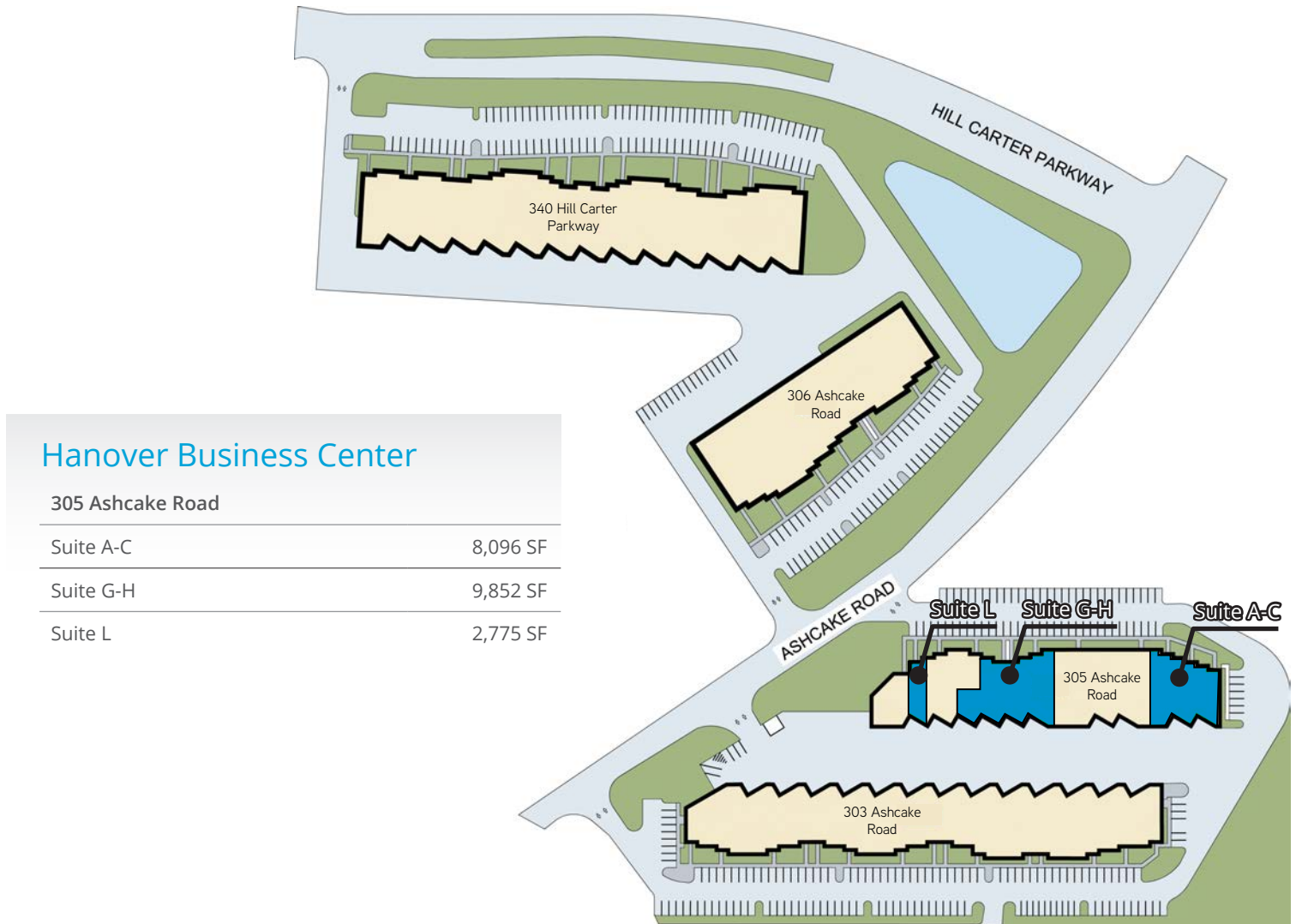
Associate Vice President
+1 804 968 1978
catherine.walker@colliers.com

2221 Edward Holland Dr
Suite 600 | Richmond, VA
P: +1 804 320 5500
F: +1 804 320 4839
colliers.com/richmond

Hanover Business Center Ashland, VA

Ashcake Road & Hill Carter Parkway

- Four building office/warehouse park totaling 184,979 SF
- Brick and glass façade with private entrances
- 3 Suites available:
305 Ashcake Rd
 - Suite A-C: 8,096 SF
 - Suite G-H: 9,852 SF
 - Suite L: 2,775 SF
- 14'-24' ceiling heights
- Dock height and drive-in doors
- M-1 zoning
- High Speed internet available via Comcast
- Town of Ashland Technology Zone incentives available
- Direct access to Route 1, I-95 and I-295
- Owned and managed by Baker Properties - Richmond Limited Partnership



Contact us:

John Carpin

Senior Vice President
+1 804 267 7216
john.carpin@colliers.com

Malcolm Randolph, SIOR

Senior Vice President
+1 804 267 7208
malcolm.randolph@colliers.com

Jimmy Martin, SIOR

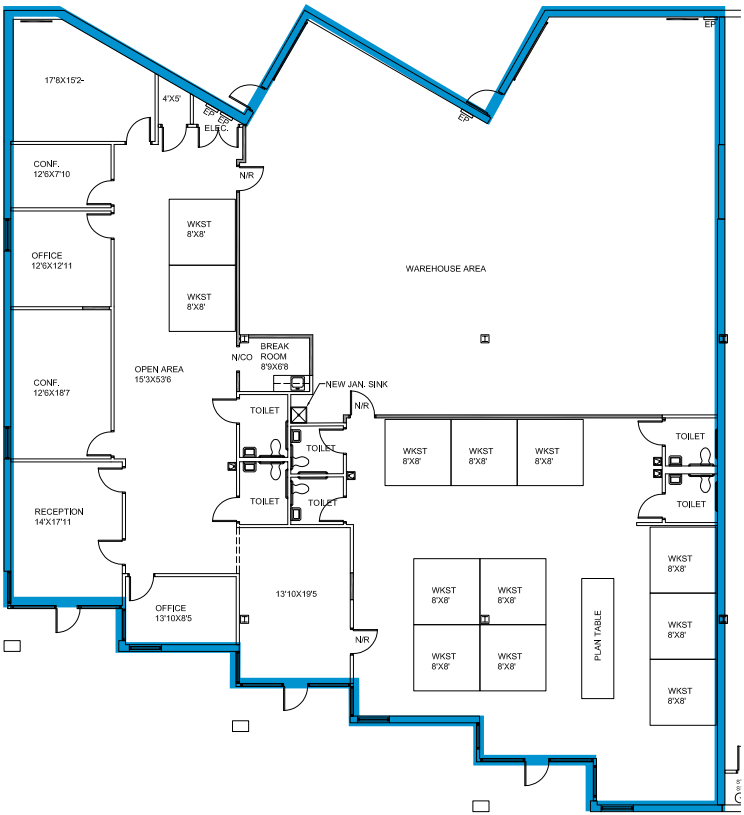
Senior Vice President
+1 804 267 7218
jimmy.martin@colliers.com

Catherine Walker

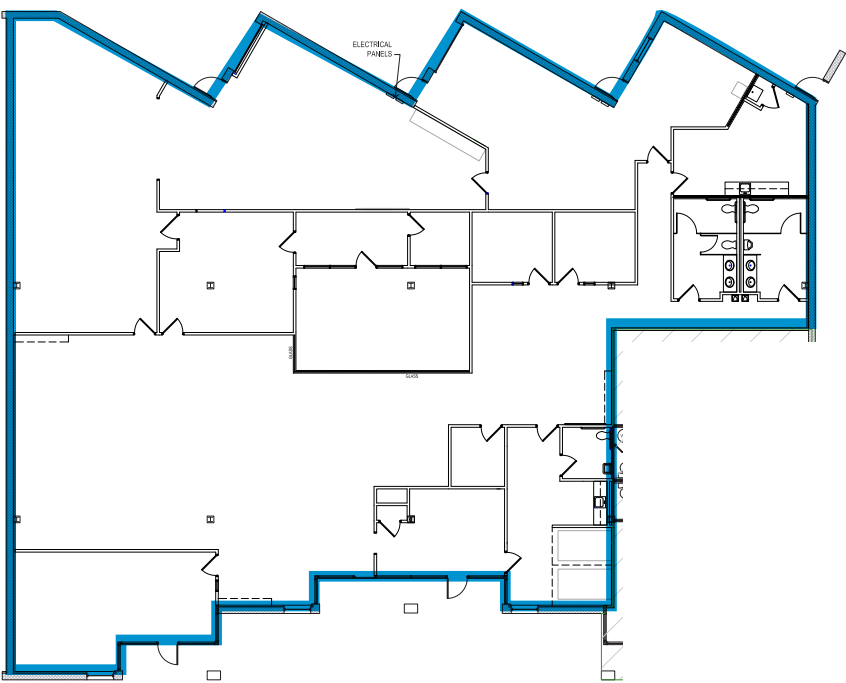
Associate Vice President
+1 804 968 1978
catherine.walker@colliers.com

Hanover Business Center

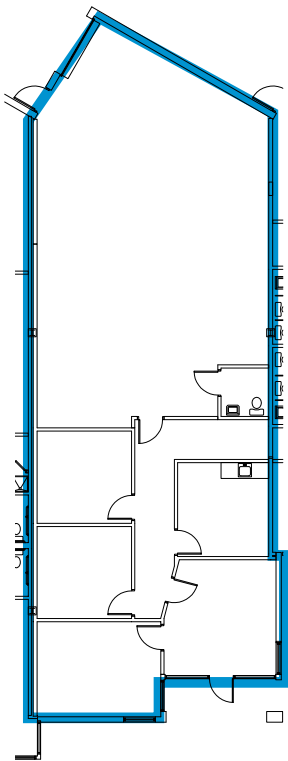
305 Ashcake Road
Suite A-C 8,096 SF



305 Ashcake Road
Suite G-H 9,852 SF



305 Ashcake Road
Suite L 2,775 SF



Hanover Business Center



Contact us:

John Carpin

Senior Vice President

+1 804 267 7216

john.carpin@colliers.com

Malcolm Randolph, SIOR

Senior Vice President

+1 804 267 7208

malcolm.randolph@colliers.com

Jimmy Martin, SIOR

Senior Vice President

+1 804 267 7218

jimmy.martin@colliers.com

Catherine Walker

Associate Vice President

+1 804 968 1978

catherine.walker@colliers.com