



Broadway Plaza

2121 SW Broadway, Portland, OR 97201



Tracie Massey

American Property Management

2154 NE Broadway St, Suite 200, Portland, OR 97232

lease@apmportland.com

(503) 281-7779



Broadway Plaza

\$18.00 /SF/YR

Broadway Plaza is a three-story office building over two levels of parking and adjacent to I-405. The building features floor-to-ceiling exterior windows with great views.

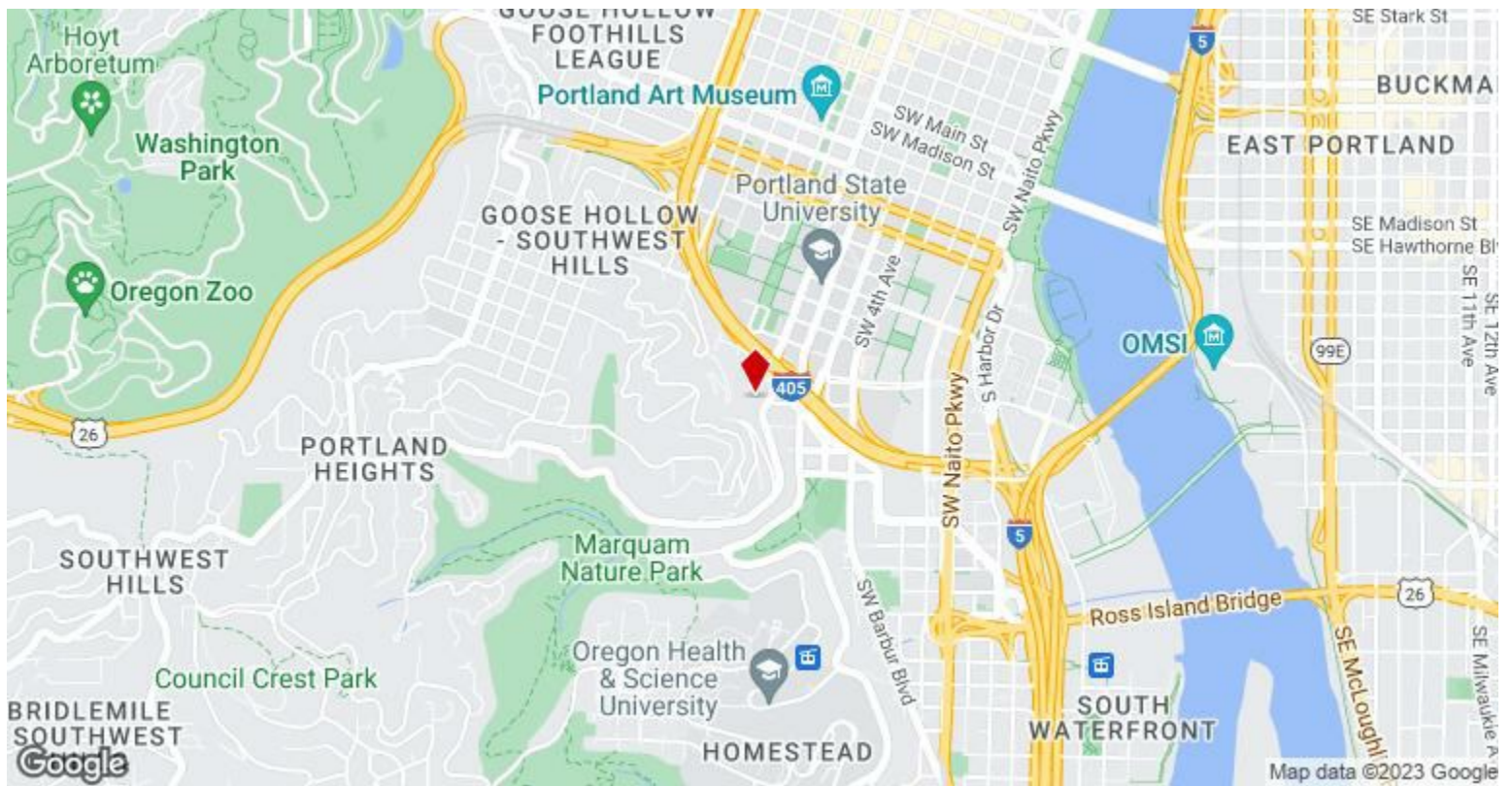
The area provides very easy access to I-405 and is a short distance from several restaurants, pubs, grocery shopping, and OHSU....



Rental Rate:	\$18.00 /SF/YR
Property Type:	Office
Building Class:	B
Rentable Building Area:	53,646 SF
Year Built:	1970
Walk Score ®:	83 (Very Walkable)
Transit Score ®:	85 (Excellent Transit)
Rental Rate Mo:	\$1.50 /SF/MO

1st Floor Ste 111

Space Available	5,765 SF
Rental Rate	\$18.00 /SF/YR
Date Available	Now
Service Type	Full Service
Space Type	Relet
Space Use	Office
Lease Term	2 - 5 Years

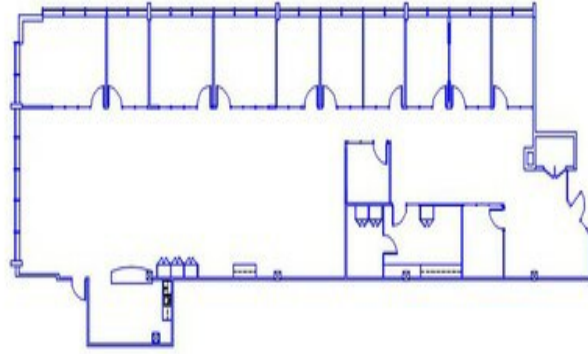


2121 SW Broadway, Portland, OR 97201

Broadway Plaza is a three-story office building over two levels of parking and adjacent to I-405. The building features floor-to-ceiling exterior windows with great views.

The area provides very easy access to I-405 and is a short distance from several restaurants, pubs, grocery shopping, and OHSU.

Property Photos



Broadway Plaza suite 111



Internal

Property Photos



Internal 2



Building sign

Property Photos



Building Photo