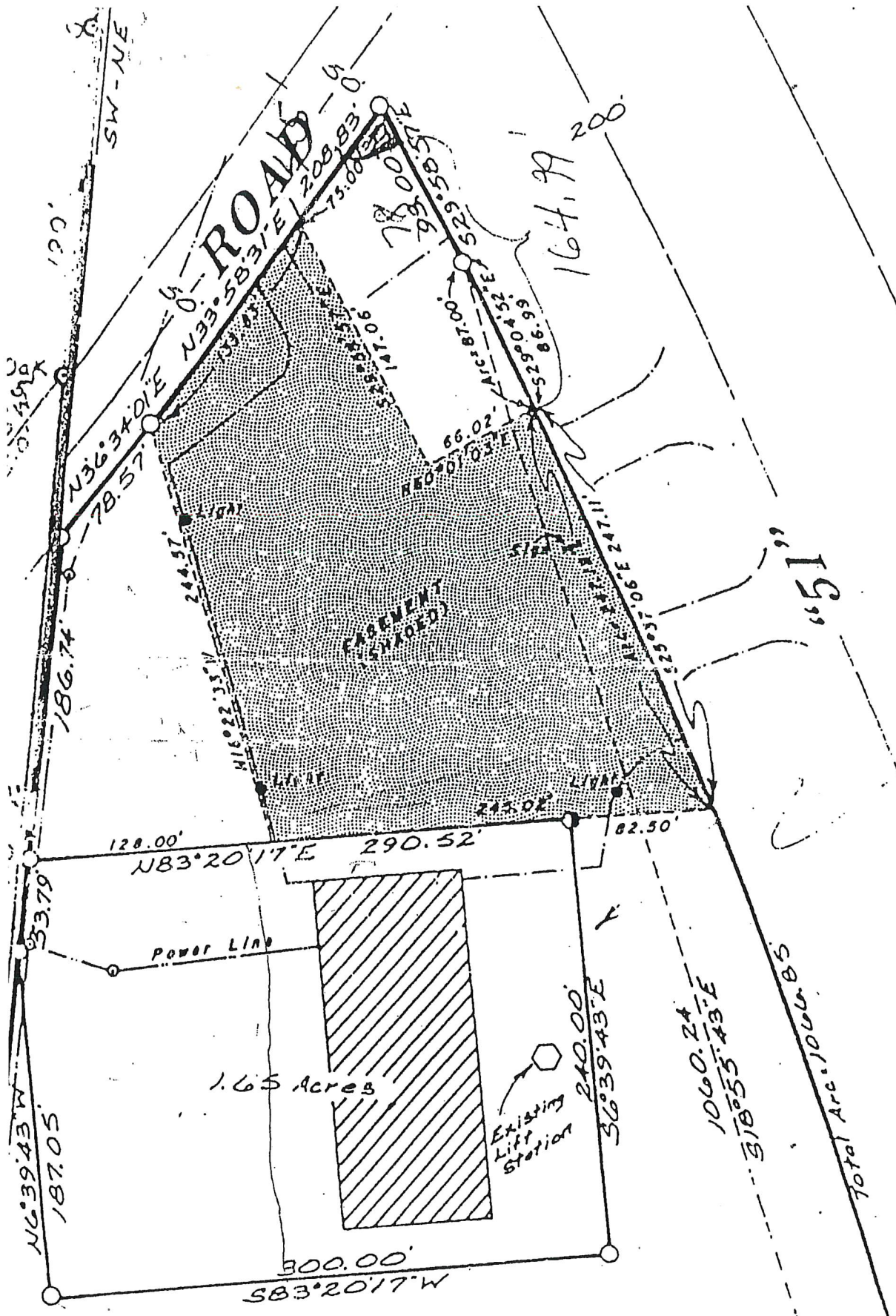


MAP # B4404  
 DATE FILED FEB 09 2000  
 BY [Signature]  
 DESCRIPTION FILED  
 ONEIDA CO. SURVEYOR'S OFFICE

Bearings Based on the  
 N-S 1/4 Line as N52°29'31"E

B4404



78  
86  
91

See Detail

Rad. = 2764.90'  
Delta = 22°06'28"

S.