



## BRAINTREE EXECUTIVE PARK

100-150 GROSSMAN DR  
BRAINTREE, MA 02184

OFFICE SPACE

**AVAILABLE**

Sean M. Kenealy  
President

Key Realty, Inc.  
Commercial Brokerage  
and Advisory Services  
16 Granite Street  
Quincy, MA 02169

Phone | 617-472-7200

Cell | 617-312-4646

Direct Line | 617-376-6312

Fax | 617-472-6655

Email | [smk@keyrealty.com](mailto:smk@keyrealty.com)

## FEATURES

**Building Size:** Total 125,641 SQFT

**Building Status:** Existing Office Buildings Built in 1987

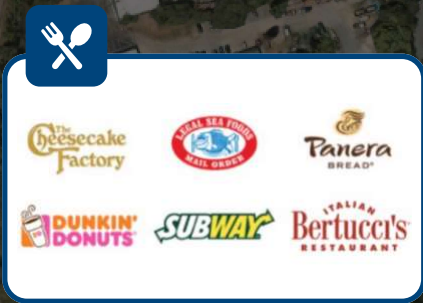
**Amenities/  
Parking:** 24 Hour Access, Atrium, Bus Line, Commuter Rail, Metro/Subway; 196 Surface Spaces are available; 38 Covered Spaces are available; Ratio of 3.79/1,000 SF

Braintree Executive Park is a high-quality two building 125,641 square foot first-class office park located directly off of Route 3. The well-appointed, easily accessible buildings at 100 and 150 Grossman Drive are being enhanced by a significant capital improvements program. The contemporary buildings feature distinctive glass atriums with museum quality sculpture, expansive window lines, and numerous amenities. South Shore Plaza with over 180 retail shops and restaurants, and the Hyatt Braintree and Marriott Quincy hotels are within minutes. The Braintree MBTA Station serving the South Shore is adjacent to the 4.77 acre site. See the changes taking place at Braintree Executive Park, and why it is the perfect business environment for your future that boasts an ample parking ratio which includes covered parking spaces.

# AERIAL MAP



100-150 GROSSMAN DR  
BRAINTREE, MA 02184



## ON-SITE

New, on-site healthy vending amenity, providing fresh snack and meal options to tenants.

## COVERED PARKING

Extensive covered parking with direct access into each building. In addition the parking ratio at the property is 5.3 spaces per 1000 SF.

## WALKING DISTANCE OT MBTA RED LINE AND COMMUTER RAIL

The property nile directly abuts the Red Line and Commuter rail stops providing easy access to public transportation.

### Redline (commuting times)

- North Quincy: 10minutes
- South Station: 25 minutes
- Kendall Square: 35 minutes
- Alewife: 50 minutes

### Plymouth/Kingston Commuter Rail

- South Station: 20 minutes
- Plymouth/Kingston: 60 minutes

### Middleboro/Lakeville Commuter Rail

- South Station: 20 minutes
- Middleboro/Lakeville: 35 minutes

# AERIAL RETAIL

Boston

North Quincy



Braintree Split

Crown Colony



Quincy Adams  
MBTA

Exit 19

SOUTH SHORE PLAZA  
A SIMON MALL

**BRAINTREE**  
EXECUTIVE PARK

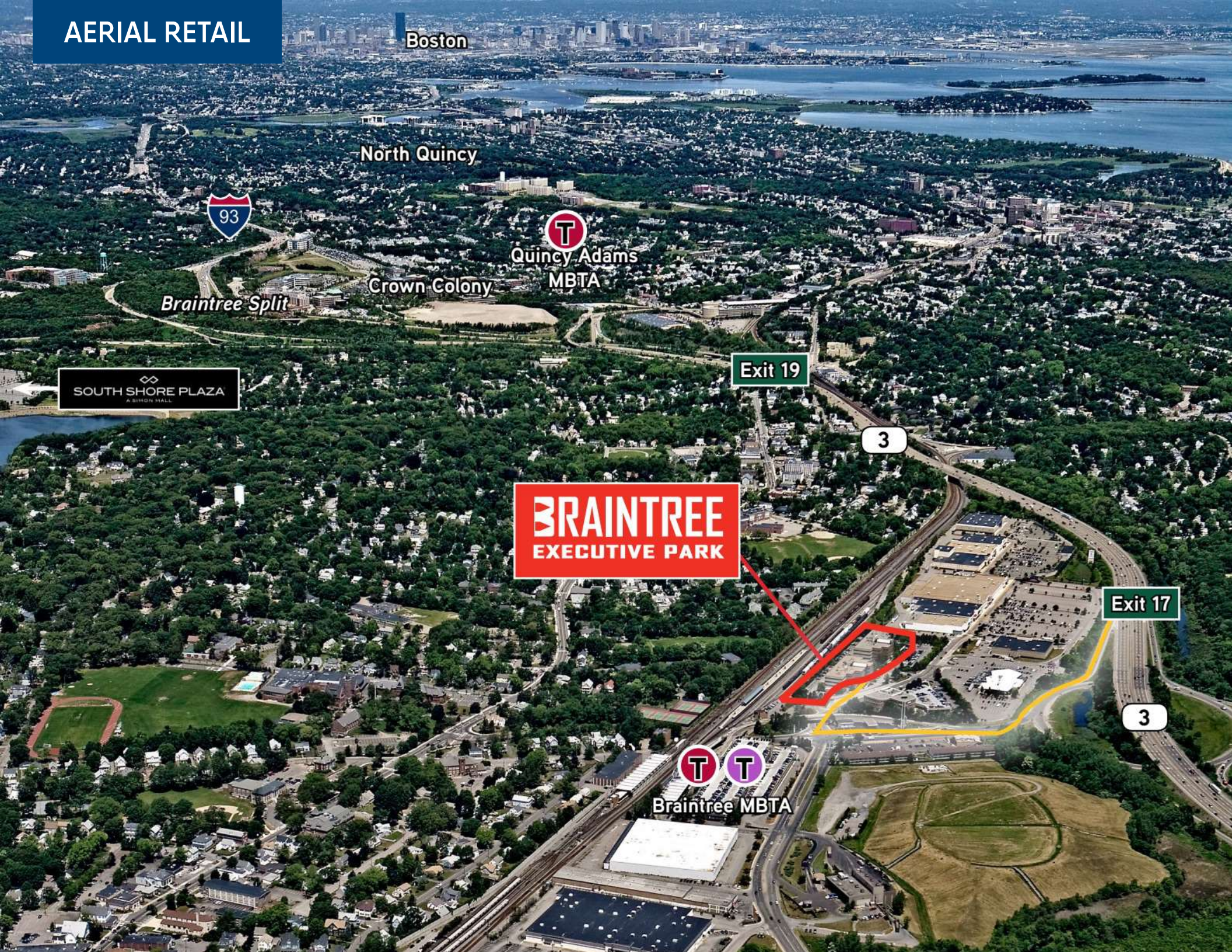
3

Exit 17

3



Braintree MBTA

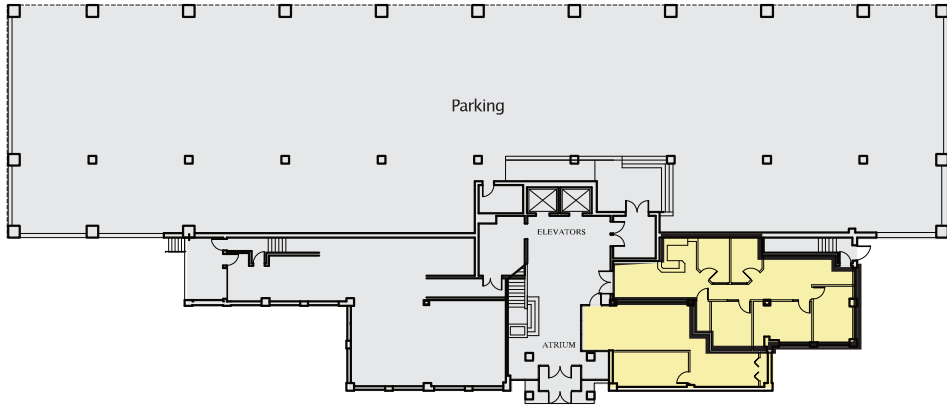


# PROPERTY PHOTOS



# FLOORPLAN - 100 GROSSMAN DRIVE

## FLOOR 1



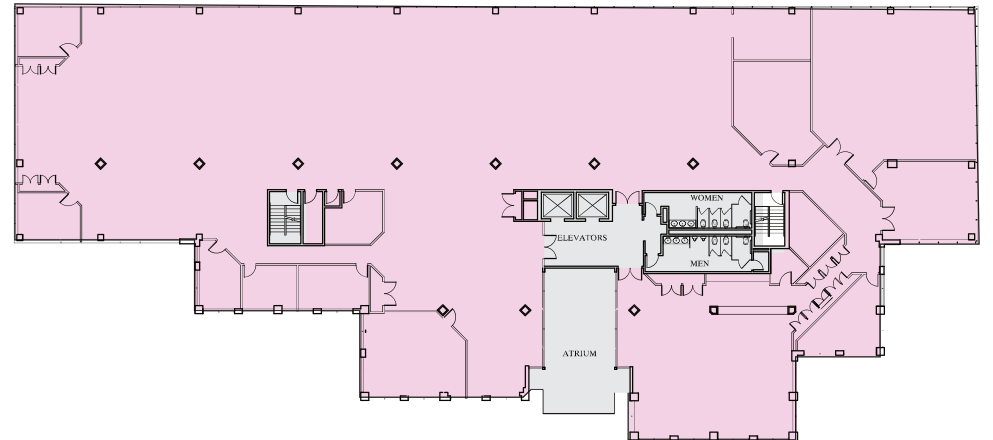
## FLOOR 2



## FLOOR 3

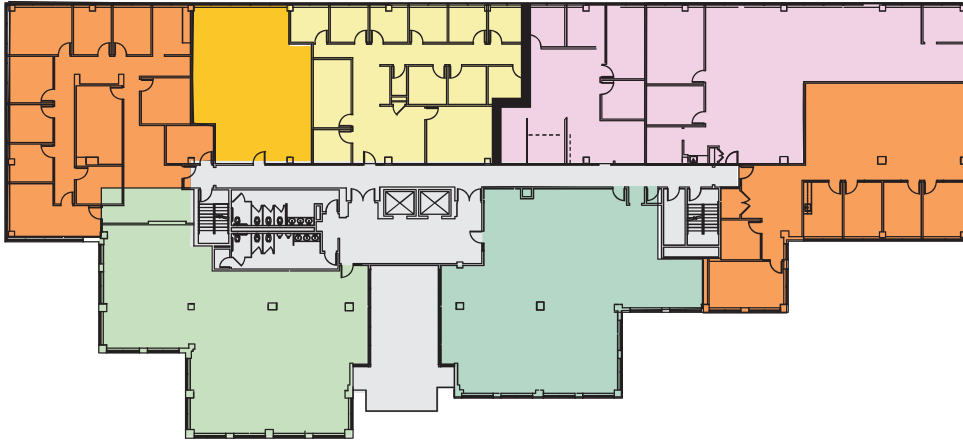


## FLOOR 4



# FLOORPLAN - 150 GROSSMAN DRIVE

## FLOOR 2



## FLOOR 3



## FLOOR 4





## CONTACT

**Sean M. Kenealy** President

**Key Realty, Inc.** Commercial Brokerage and Advisory Services | 16 Granite Street Quincy, MA 02169

Phone 617-472-7200 | Cell 617-312-4646 | Direct Line 617-376-6312 | Fax 617-472-6655

