

SUITE 100

17592 E. 17th St.

TUSTIN, CA 92780

Available Space

6,044 SF (Divisible)

Summary

Property Type	Lease Type	Asking Rate
Office	Sublease	Negotiable

Term
Through February 29, 2028

Features



FF&E is
Negotiable



Partitioned
Offices



Easy Access to (55
& I-5) Freeways



Conferencing
Facility



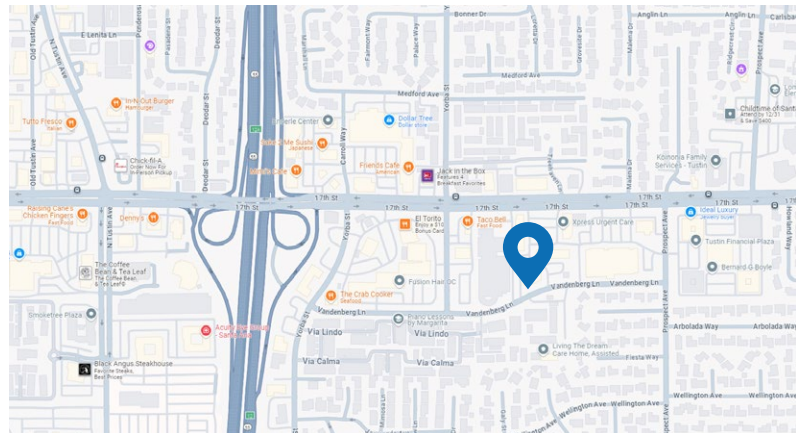
4 Spaces per 1,000
SF Leased



Located near the
retail corridor of
Tustin with nearly a
dozen restaurants
adjacent to the
building.



Private Outdoor
Patio



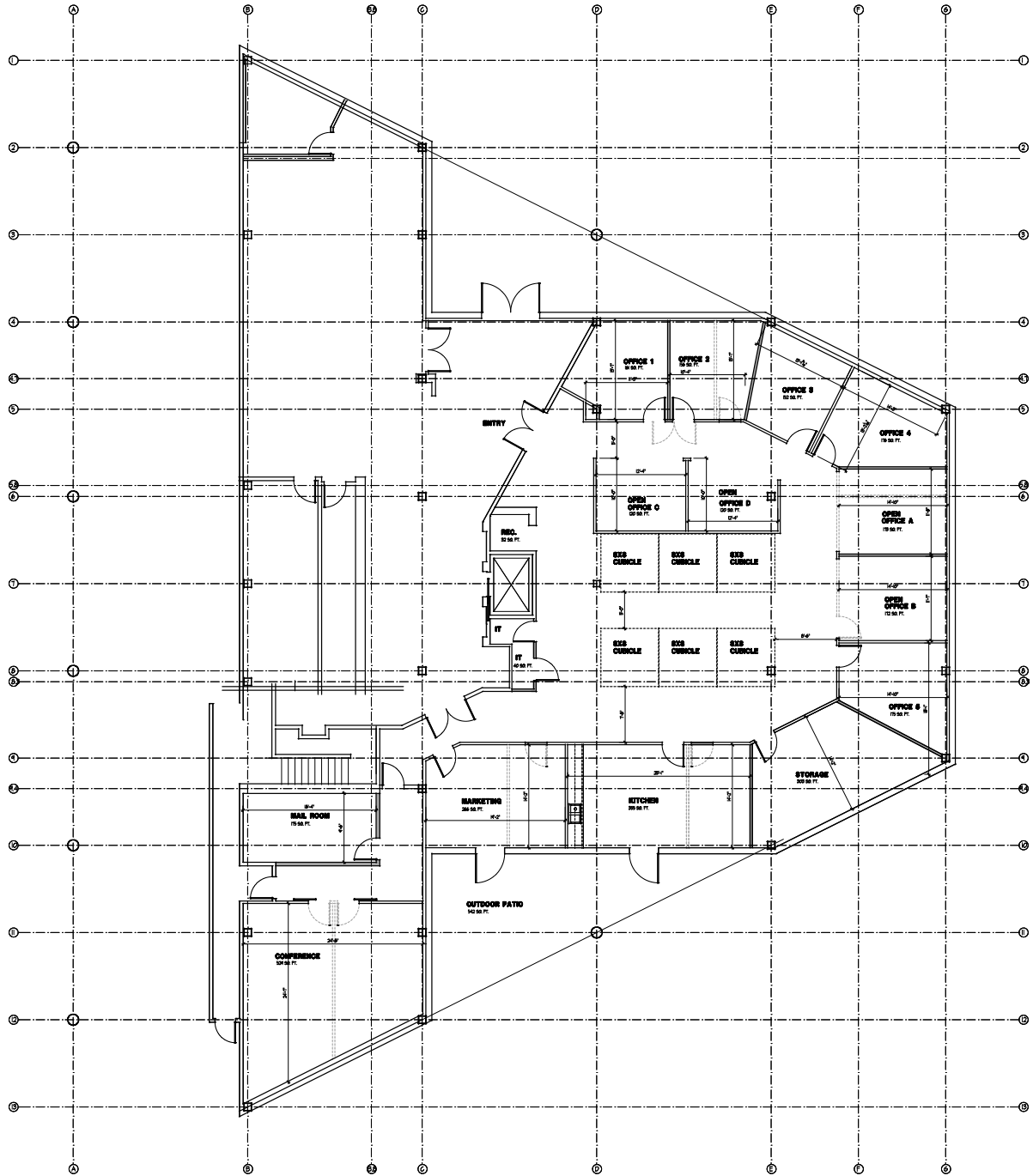
J.D. DeRosa,
Vice President
213.430.2531
JD.DeRosa@transwestern.com
CA License 01345222

601 S. Figueroa St.
Suite 3650
Los Angeles, CA 90017
213.624.5700
transwestern.com

The information provided herein was obtained from sources believed reliable; however, Transwestern makes no guarantees, warranties or representations as to the completeness of accuracy thereof. The presentation of this property is submitted subject to errors, omissions, change of price or conditions, prior to sale or lease, or withdrawal without notice. Copyright © 2024 Transwestern. CA Lic 01263636.

17592 E. 17th St.

SUITE 100



J.D. DeRosa,
Vice President
213.430.2531
JD.DeRosa@transwestern.com
CA License 01345222

601 S. Figueroa St.
Suite 3650
Los Angeles, CA 90017
213.624.5700
transwestern.com

The information provided herein was obtained from sources believed reliable; however, Transwestern makes no guarantees, warranties or representations as to the completeness of accuracy thereof. The presentation of this property is submitted subject to errors, omissions, change of price or conditions, prior to sale or lease, or withdrawal without notice. Copyright © 2024 Transwestern. CA Lic 01263636.