

# LAND SALE

0 Nowlin Ct  
Turlock, CA 95380

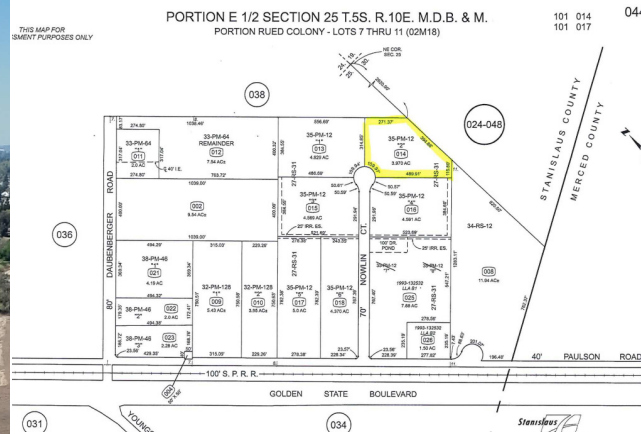
APN 044-037-014-000

FOR  
\$550,000

Positioned for future potential, this ±3.97-acre parcel offers a rare opportunity within an Urban Reserve zoning designation. The property features existing street improvements including curbs and street lighting, adding to its long-term development appeal. With ample space and strategic positioning, this site is well-suited for investors, developers, or those looking to secure land in a growing area.

172,933 SQ/FT

3.97 Acres



shown in photos are approximate and for illustrative purposes only.

numbers shown in photos are approximate and for illustrative purposes only.



Storms Real Estate Team

AGENT

DRE# 01219524, 02178765

O. 209-535-3680 M. 209-585-6907

service@stormsrealestate.com

3800 Geer Rd # 105, Turlock, CA 95382

stormsrealestate.com

**PMZ**  
REAL ESTATE

MLS REALTOR

All information deemed reliable but not guaranteed. All properties are subject to prior sale, change or withdrawal.