

EXCLUSIVE LISTING 43 MURRAY STREET

RENOVATED RETAIL FOR LEASE



43 MURRAY STREET

LOCATION Between Church Street and West Broadway

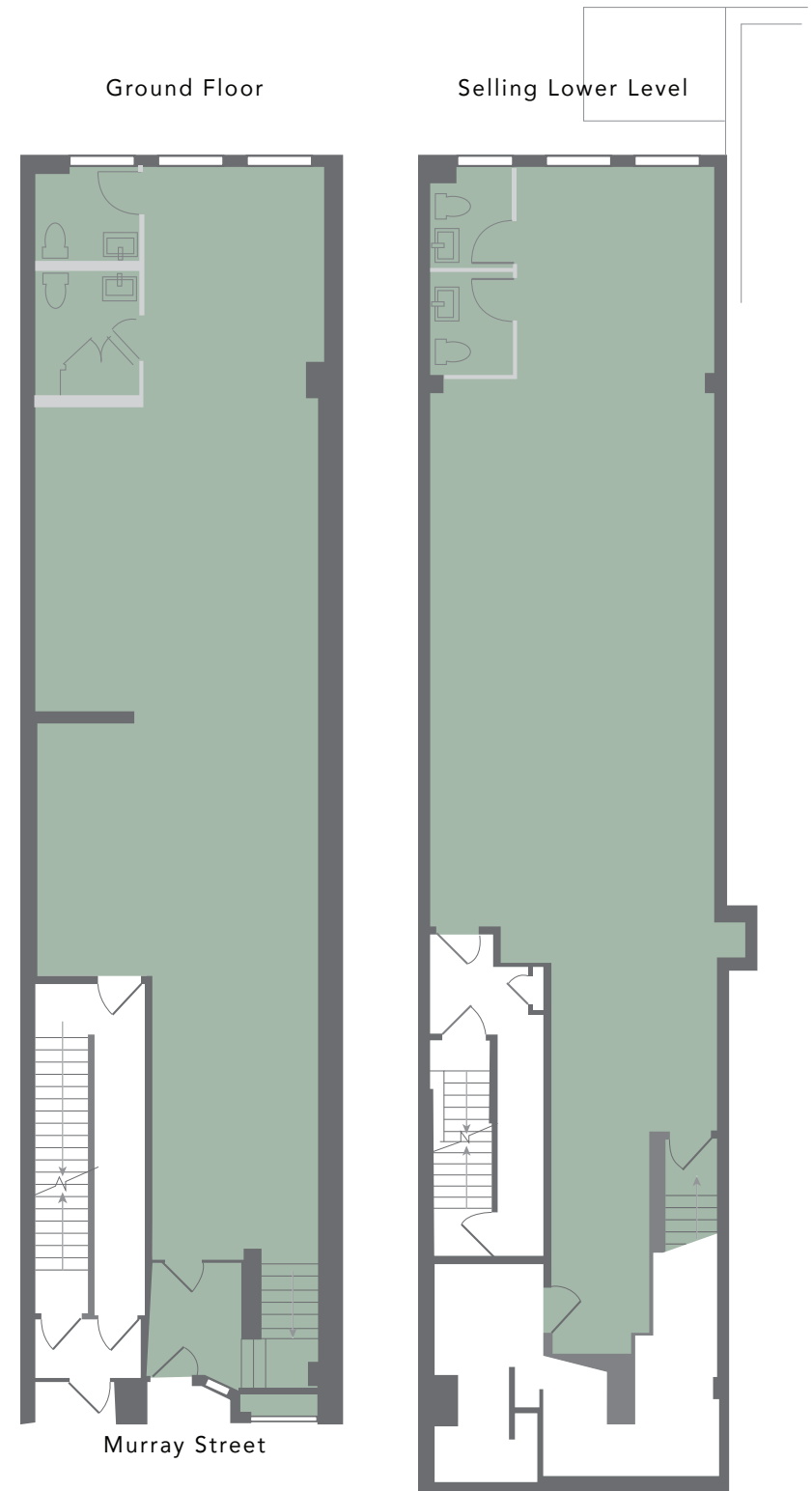
AREA Ground Floor 2,300 SF
Selling Lower Level 2,300 SF
Sub-Basement 2,300 SF

FRONTAGE 20'

CEILING HEIGHTS Ground Floor 12'
Selling Lower Level 9'

POSSESSION Immediate

- COMMENTS**
- Brand-New renovated retail for lease in the heart of Tribeca boasting over 6,900 total SF
 - Ownership has undergone a major whitebox, installing New HVAC, MEP's, and ADA compliant restrooms
 - In addition to the ground floor, we offer a legal selling lower level, providing tenants with greater flexibility to develop multi-conceptual ideas
 - In Close proximity to the 9/11 Memorial, World Trade Center, Brookfield Place, City Hall, and The Four Seasons Downtown
 - Subways **1** **2** **3** **A** **C** located on the corner of Warren and Church Streets transporting over 16M riders annually



43 MURRAY STREET



Ground Floor

43 MURRAY STREET



Ground Floor

43 MURRAY STREET



Selling Lower Level

43 MURRAY STREET



FOR MORE INFORMATION CONTACT EXCLUSIVE LEASING AGENTS

Jeremy Aidan

646 696 0010

jeremy@isaacsandcompany.com

Victor Terzi

Cell 646 574 3688

victor@isaacsandcompany.com