

FOR LEASE | INDUSTRIAL

8915-8925 NORTHEND AVE.



8915-8925 NORTHEND AVE.
FERNDAL, MI 48220

PROPERTY HIGHLIGHTS:

- 8,000 SF industrial space for lease
- Vacant space available for immediate occupancy
- Great location just outside of Ferndale's downtown district
- Easy access to all major Metro Detroit freeways
- 1 overhead door
- Ample power coming into the building
- Lease Rate: \$9.95 NNN

The information provided herein along with any attachment(s) was obtained from sources believed to be reliable, however, Friedman Real Estate makes no guarantees, warranties, or representations as to the completeness or accuracy of such information and legal counsel is advised. All information provided is subject to verification and no liability for reliance on such information or errors or omissions is assumed. The presentation of this property is submitted subject to errors, omissions, change of price or conditions, prior sale or lease, or withdrawal without notice. Copyright © 2025 Friedman Real Estate. All rights reserved.

FOR MORE INFORMATION PLEASE CONTACT:

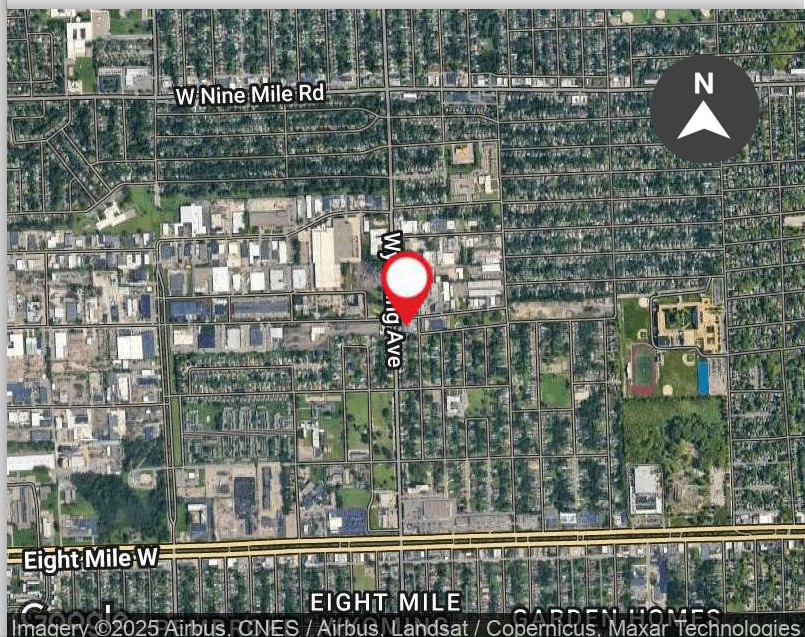


JOEL KESTENBERG

Associate, Investment Advisory Services
joel.kestenberg@freg.com

248.324.2000

eCODE 111



8915-8925 NORTHEND AVE.

PROPERTY **INFORMATION**

HIGHLIGHTS

Building SF:	16,000 SF
Available SF:	8,000 SF
County:	Oakland
Cross Streets:	Wyoming & 8 Mile

SITE

Land (acres):	0.42
Parcel Number:	25-33-301-003
Zoning:	M-2

GENERAL

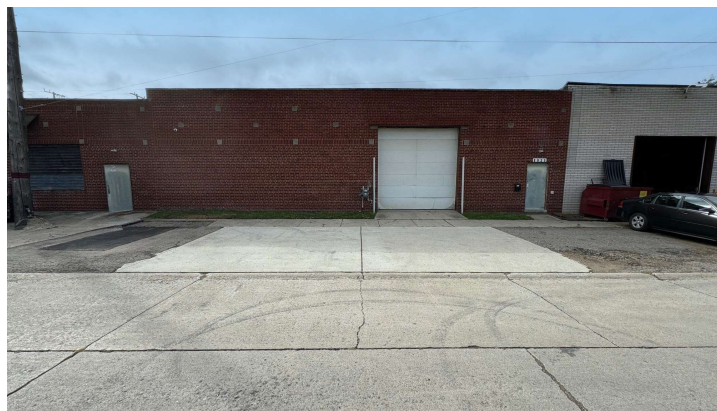
Parking Spaces:	10
Parking Ratio:	1.75
Parking Type:	Surface

PRICING & AVAILABILITY

Lease Rate:	\$9.95/SF (NNN)
Space Available:	± 8,000 SF

BUILDING INFORMATION

Type:	Industrial
Year Built:	1968
Heating:	Gas
Electrical:	800a, 440- 480v Heavy
Ceiling Height:	18'
Clear Height:	12'-16'
# Grade Level Doors:	2



8915-8925 NORTHEND AVE. LOCATION **OVERVIEW**



FOR MORE INFORMATION **PLEASE CONTACT:**



JOEL KESTENBERG
joel.kestenberg@freg.com