



9315 Largo Drive, W

Upper Marlboro, Prince George's County, MD

Property Features

- 3,335 and 5,342 sf available
- Walking distance to Metro & New University of Maryland Capital Region Medical Center
- Open floor plan
- **LEASE RATES - \$18.95 - \$21.95 per SF**



Andy Mayr, CCIM

+1 301 918 2919 • amayr@naimichael.com



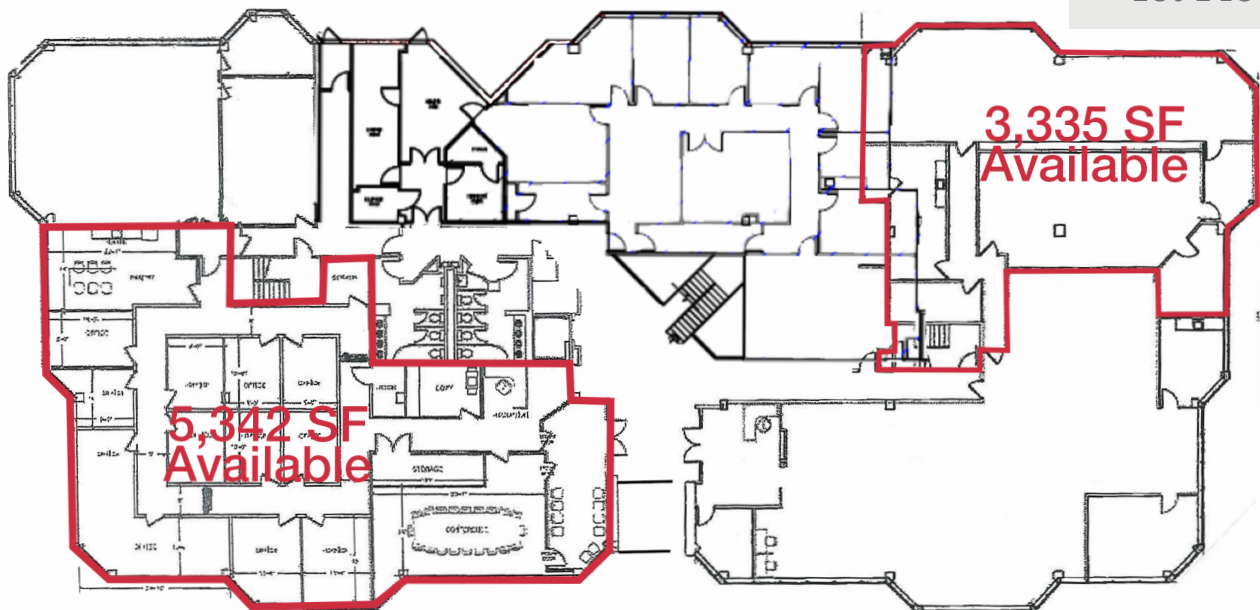
The information contained herein has been given to us by the owner of the property or other sources we deem reliable. We have no reason to doubt its accuracy, but we do not guarantee it. Floor plans, site plans and other graphic representations of this property have been reduced and reproduced, and are not necessarily to scale. All information should be verified prior to purchase or lease.

10100 Business Parkway
Lanham, Maryland 20706
+1 301 459 4400
naimichael.com

9315 Largo Drive, W
Upper Marlboro
Prince George's County, MD



1st Floor



Floor Plans are not to scale and may not depict actual layout.