



QUINCY SQUARE ON 4TH



Paving pattern



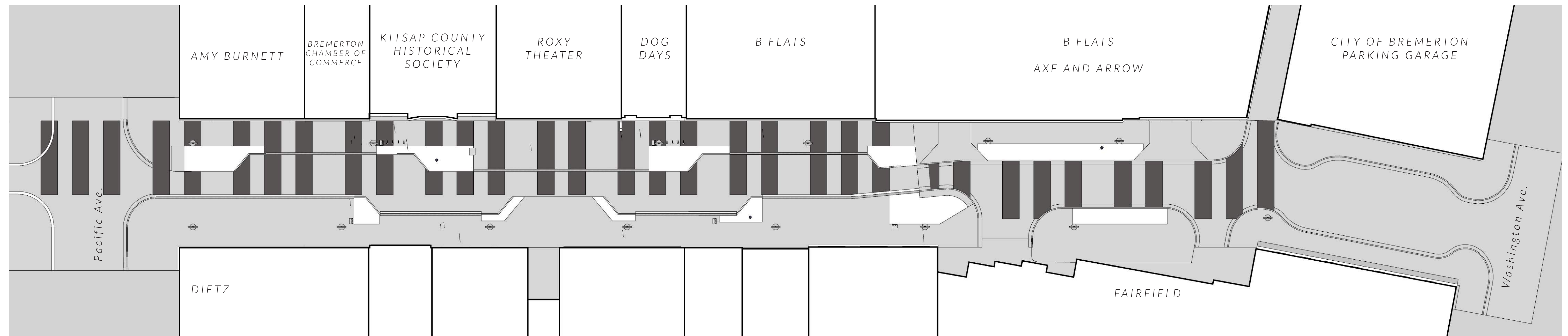
Paving pattern



View towards Washington Ave.

STREET PAVING

In a nod to Quincy Jones' musical origins in Bremerton the designers choose to incorporate a piano keyboard into the very fabric of the street. The pattern will be subtle from the pedestrian eye level, but with the ubiquity of satellite map apps everyone will be able to appreciate the underlying pattern. The pavement not only evokes a great story but also works to calm traffic speeds and provide Bremerton with an exceptional and world class design.





QUINCY SQUARE ON 4TH



Modular seating



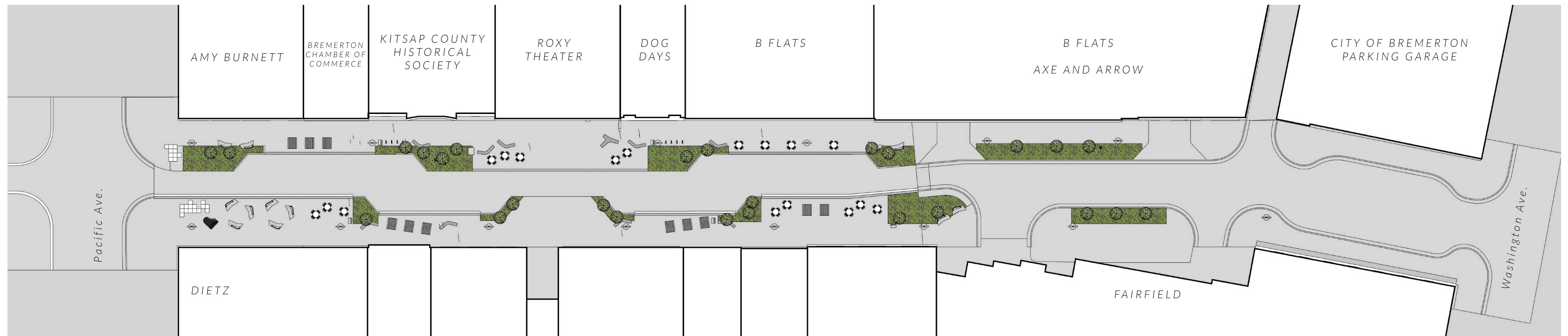
Landscape integration



View towards Washington Ave.

LANDSCAPING, TABLES, & SEATING

A series of fixed and loose seating options that support various programs (business spill outs, public dining, etc.)
Narrow and sculptural tree elements will provide shade and create canopies for calming areas along the street. Landscape planters will play a role in collecting and filtering rainwater runoff.





QUINCY SQUARE ON 4TH



Performance seating



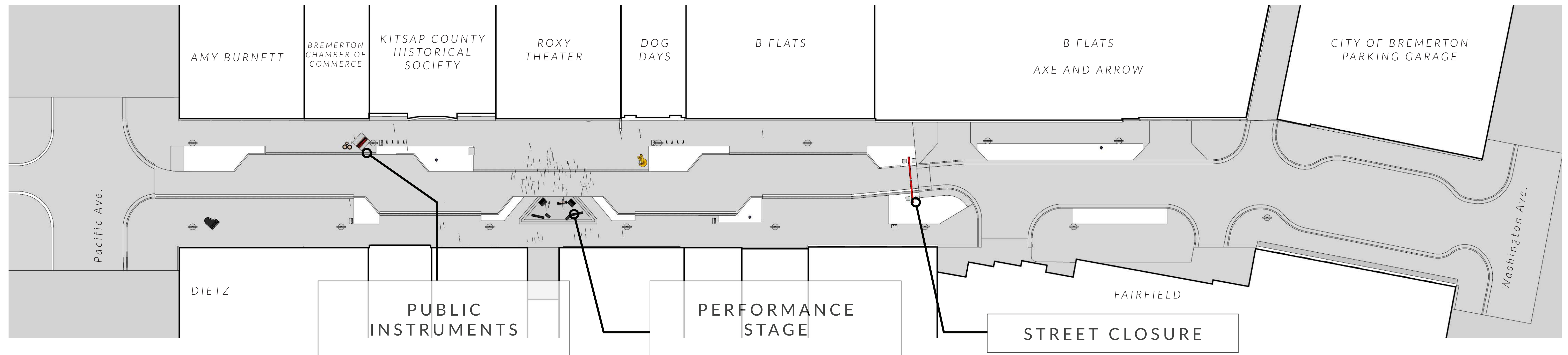
Street closure



View towards Washington Ave.

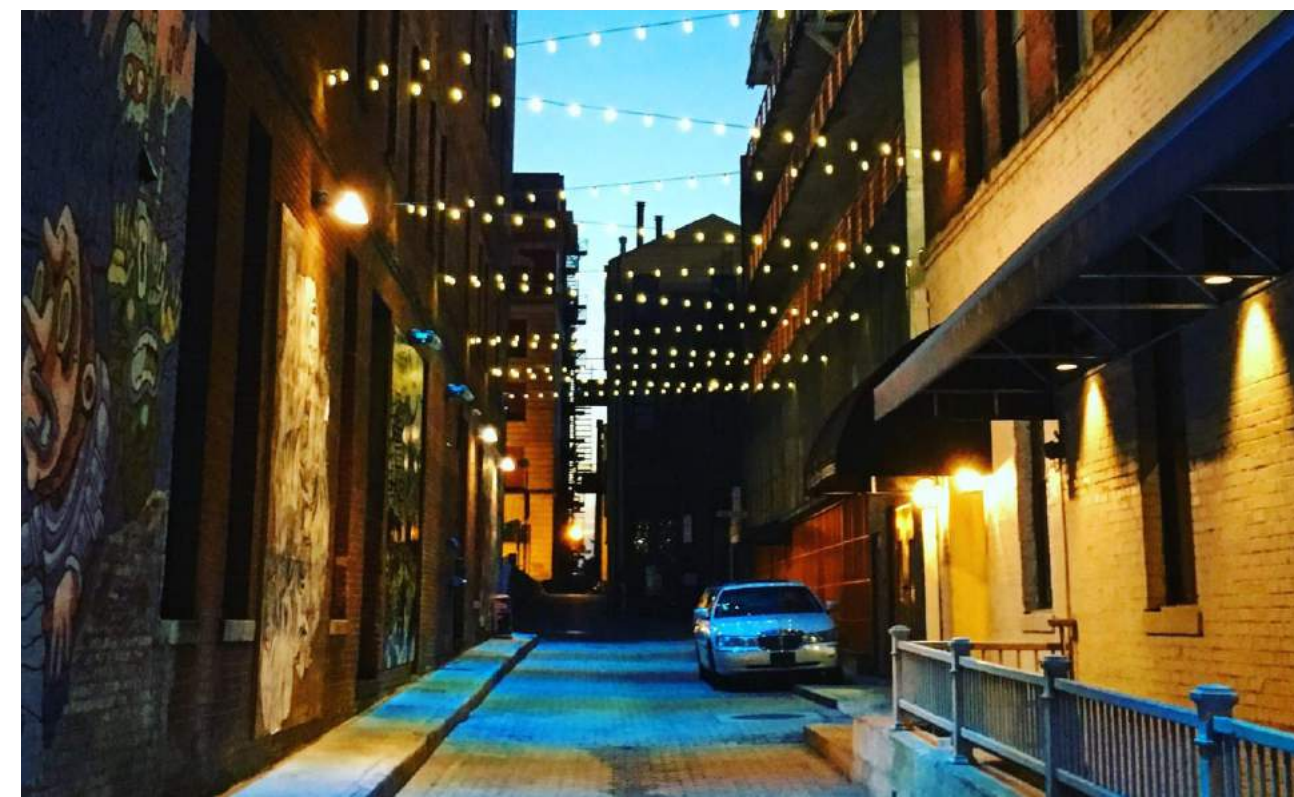
STREET CLOSURE & PERFORMANCE SUPPORTS

A visible and durable closure that secures the street from vehicular traffic during festivals. Closure materiality and design will be inspired by Bremerton's shipbuilding heritage. A performance stage across from Roxy provides an elevated platform for impromptu street performances and will be a great place to layout a picnic.





QUINCY SQUARE ON 4TH



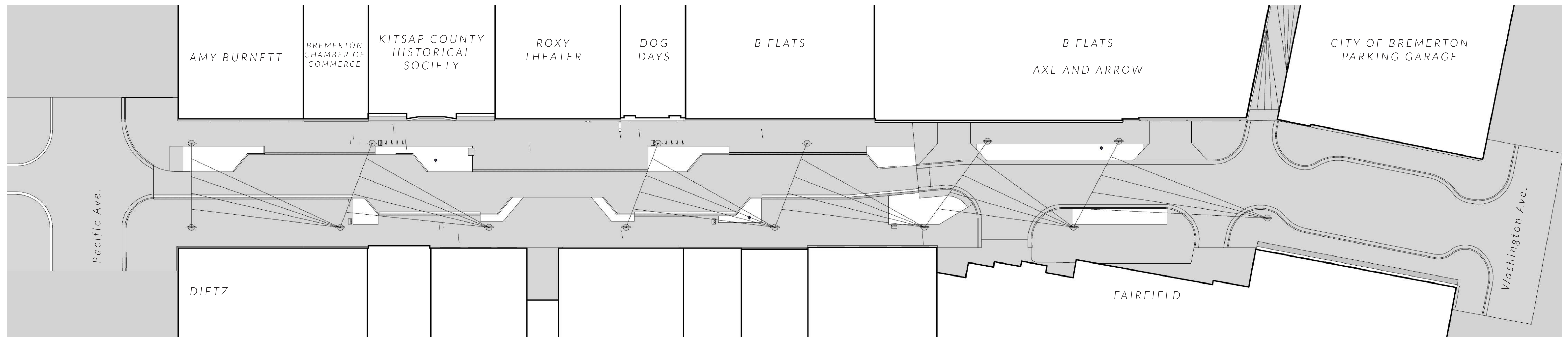
Overhead lighting



View towards Washington Ave.

FESTIVAL & FEATURE LIGHTING

Lighting is a great way to create atmosphere and define space. The designers propose using decorative festoon lighting in the shape of sails. These sails will help lower the scale of the street and create intimacy for night time events. The designers also propose to string these feature lights through the alley towards 5th avenue to facilitate and encourage safe pedestrian circulation.





QUINCY SQUARE ON 4TH



Storytelling graphics



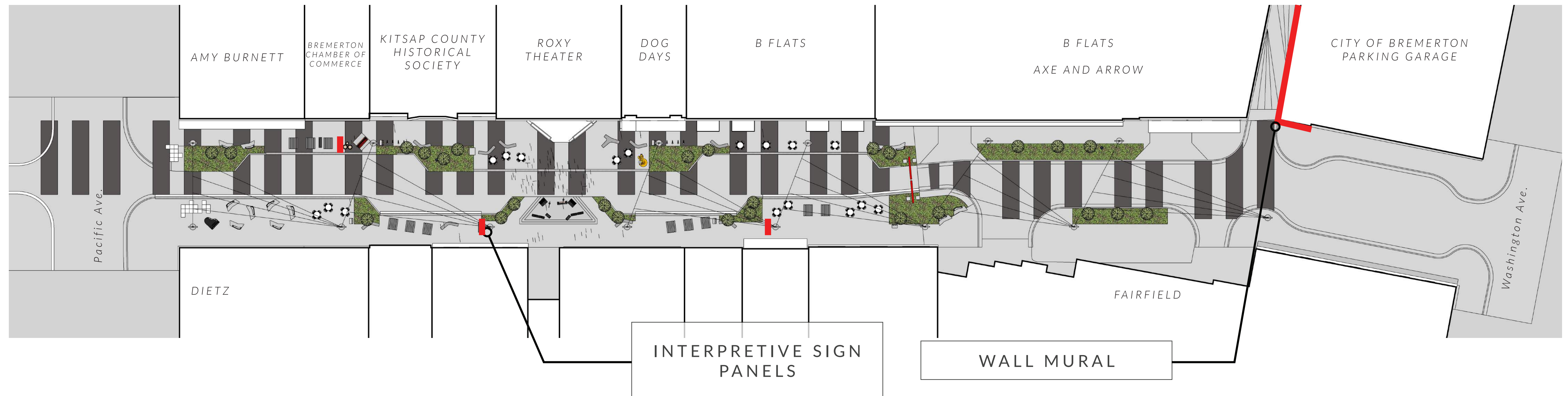
Murals



View towards Washington Ave.

QUINCY JONES STORY

A Series of murals, interpretive signage and sculptures to pay homage to Quincy Jones' musical career, and his connection to Bremerton. There will be a piano and a variety of interactive musical sculptural elements that will encourage the public to discover and engage with music.





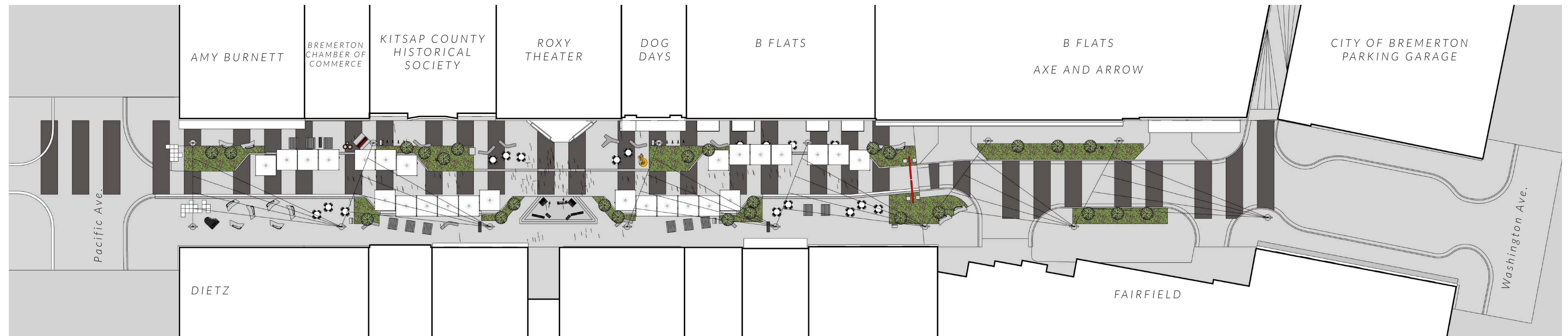
QUINCY SQUARE ON 4TH



View towards Washington Ave.

STREET FAIR

With the ability to close the street to vehicular traffic we are able to maximize the use of the right-of-way for activities. In these images we are showing vendor tents set up to allow circulation at the building fronts and the street.





QUINCY SQUARE ON 4TH



View towards Washington Ave.

FOOD FAIR

These images show a possible layout for mobile food trucks. The design has provided electrical hook-ups for vendors, to eliminate the need for generators.

