

ESTERO PARK COMMONS

9200 Estero Park Commons Blvd., STE 5
Estero, FL 33928

FOR LEASE



- PREMISES:**
- Built-out office space in Estero, ready for occupancy
 - Direct access to fiber network
 - 5 offices, open work area, breakroom / copier room and 2 restrooms
- SIZE:** 1,890 +/- SF
- LEASE RATE:** \$21.00 PSF + NNN
- ZONING:** Professional office (non-medical)
- LOCATION:** Located just off Corkscrew Road with close access to I-75 and US-41.

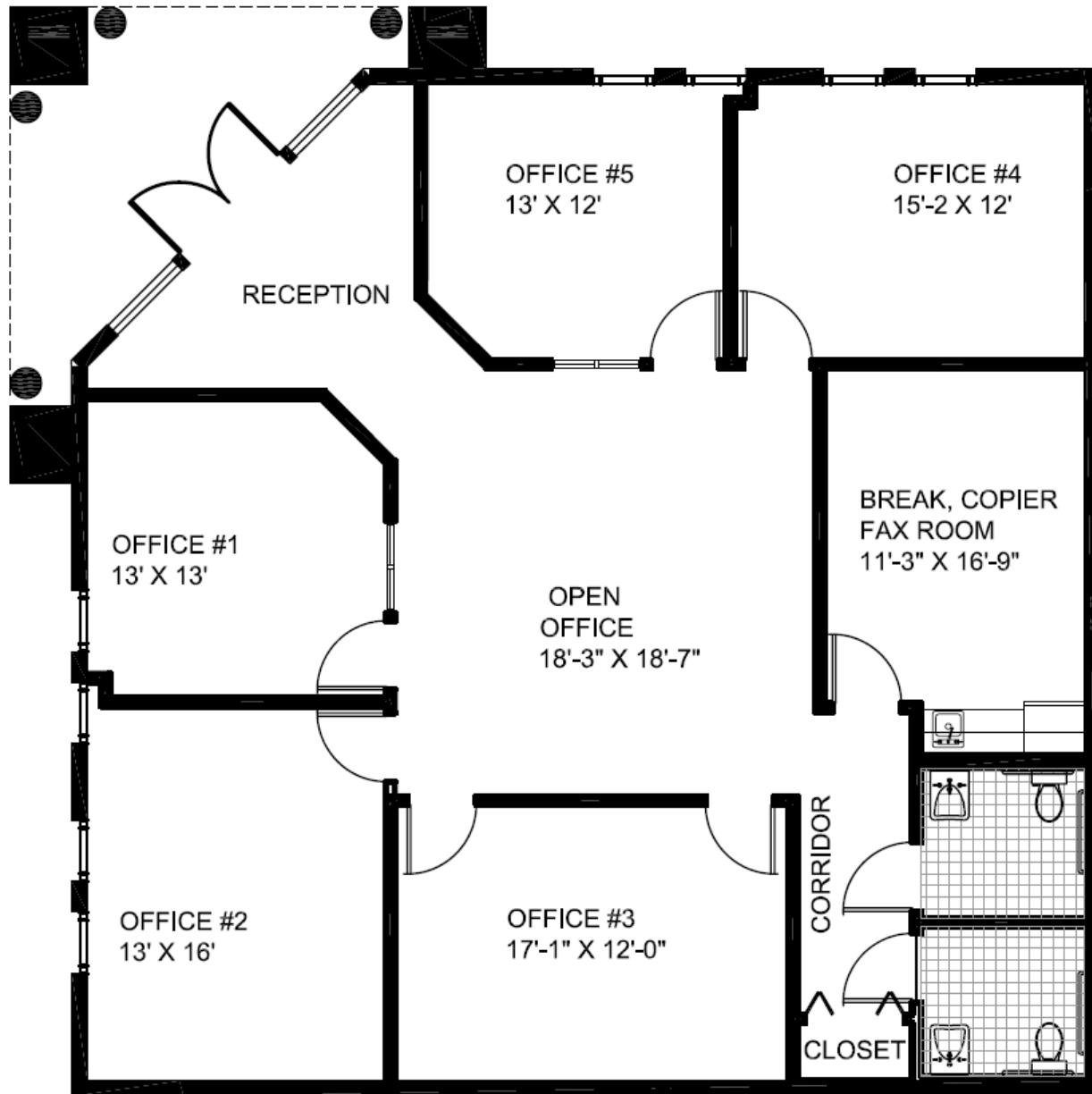




Premier COMMERCIAL

Knowledge. Experience. Relationships.

FLOOR PLAN—STE 5



STE 5: 1,890 +/- SF

LEASE RATE: \$21.00 PSF NNN

Matthew Stepan, CCIM
Commercial Advisor
MattS@premiermail.net

W.T. Pearson
Broker Associate
WT@premiermail.net

28410 Bonita Crossings Blvd., STE 225
Bonita Springs, FL 34135
239.992.1200
www.premcomm.com



**Premier
COMMERCIAL**
Knowledge. Experience. Relationships.

AERIAL

