

Premier Location

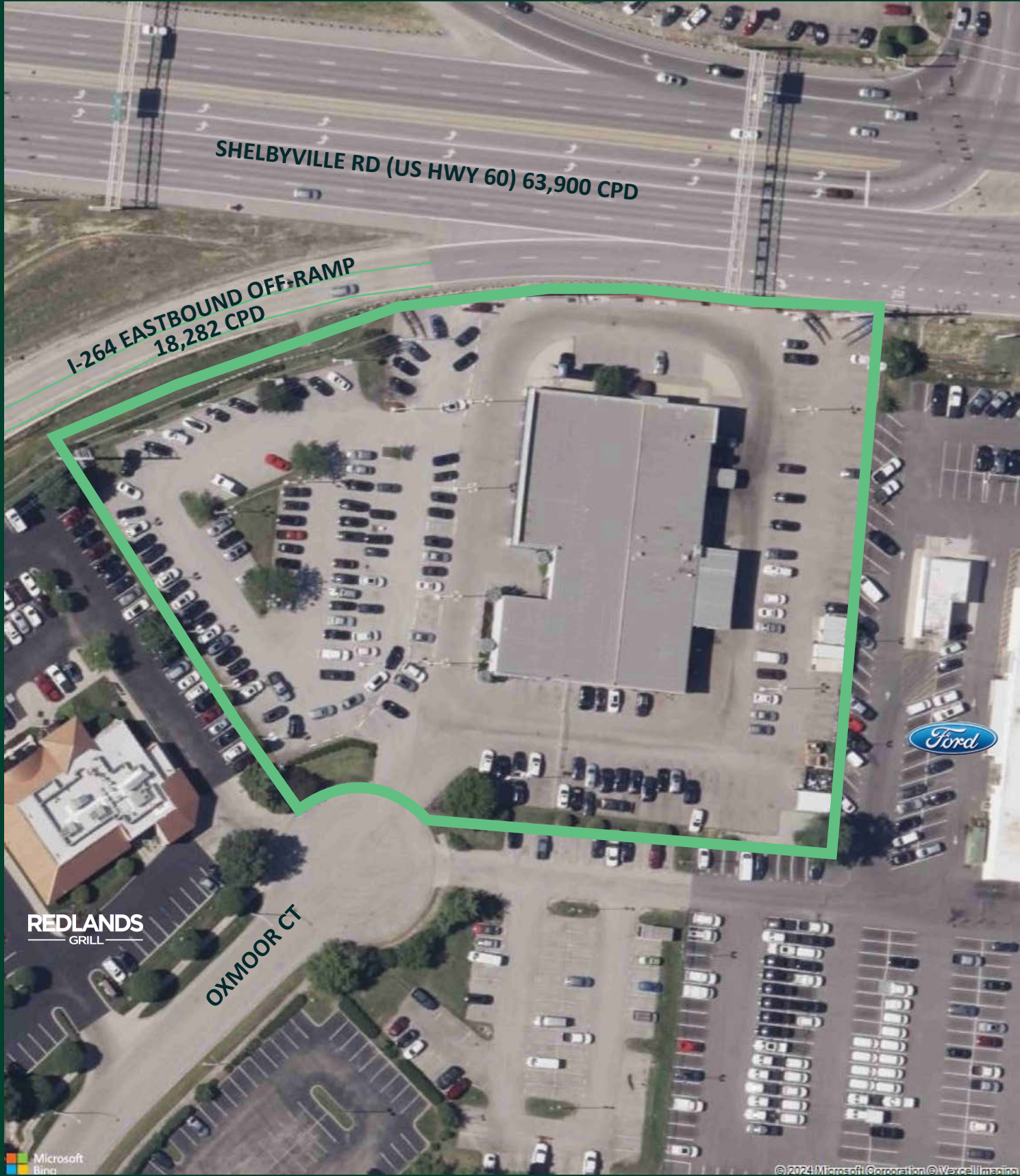
Shelbyville Road & Interstate 264

100 Oxmoor Court
Louisville, KY 40222



High Traffic Area

- + 18,710± square foot freestanding building
- + 3.12± acres
- + Excellent visibility to Shelbyville Road
- + Located at the Shelbyville Road & Interstate 264 interchange
- + Easy access to Interstates 71 & 64
- + Situated between two regional malls, Mall St Matthews (1.29M SF) & Oxmoor Center (900K SF)
- + Trade area includes Kohls, Top Golf, Dave & Buster's, Cinemark, Nordstrom Rack, Dick's Sporting Goods, Best Buy, Whole Foods and many others
- + Zoned C-2 Commercial
- + Shelbyville Road traffic count: 63,900 CPD



View from Shelbyville Road



View from Oxmoor Court

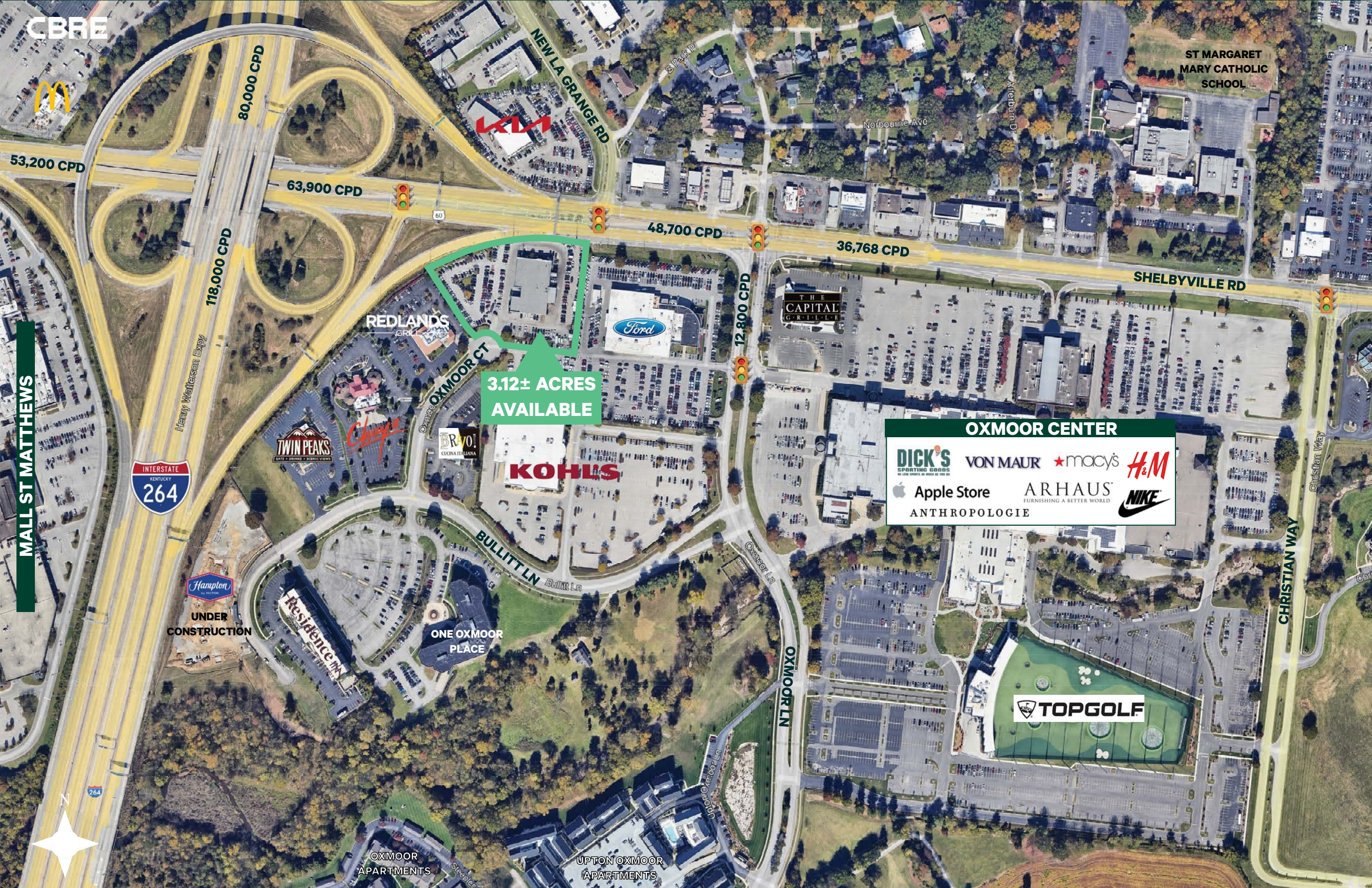


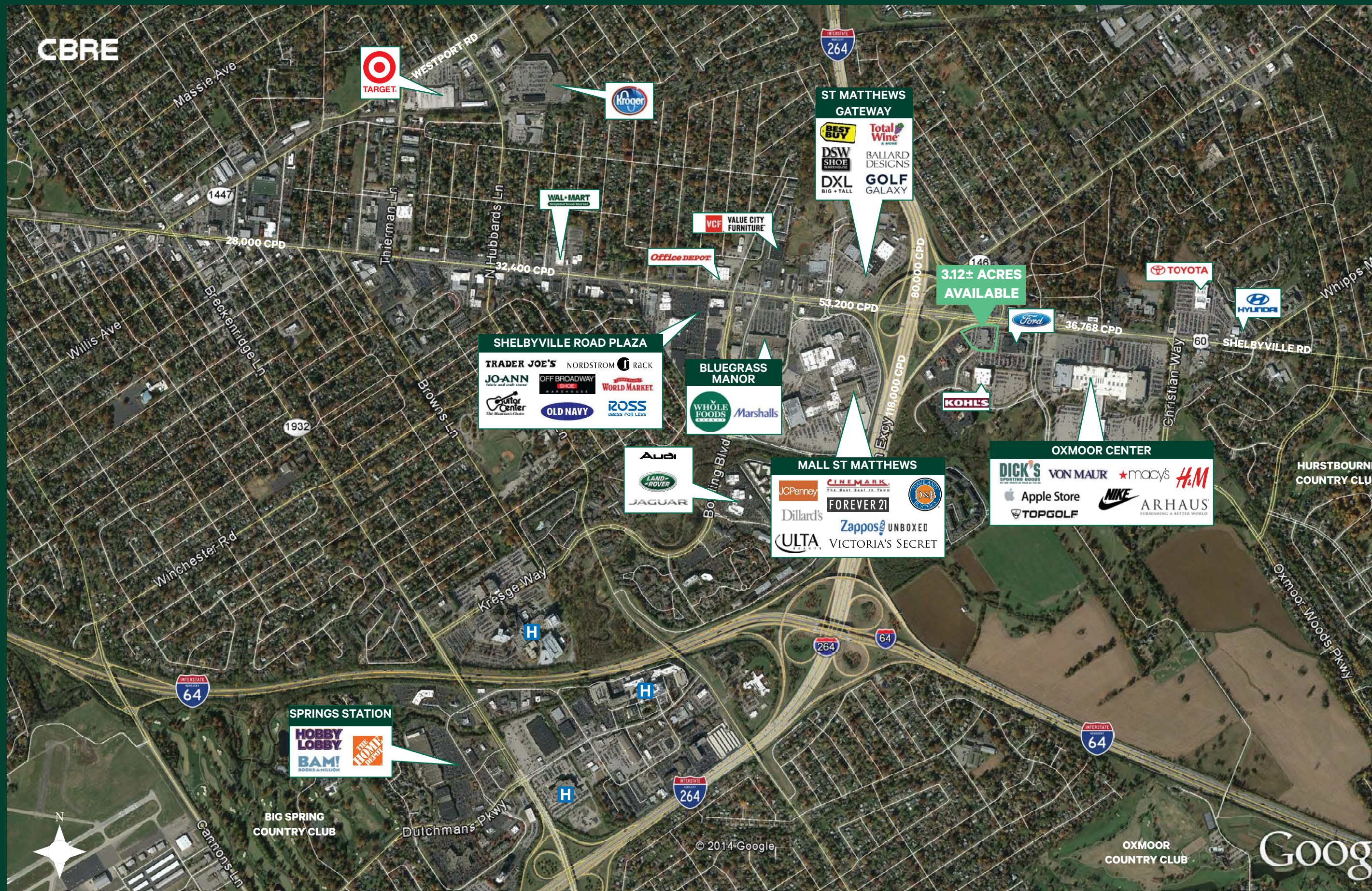
View Southwest

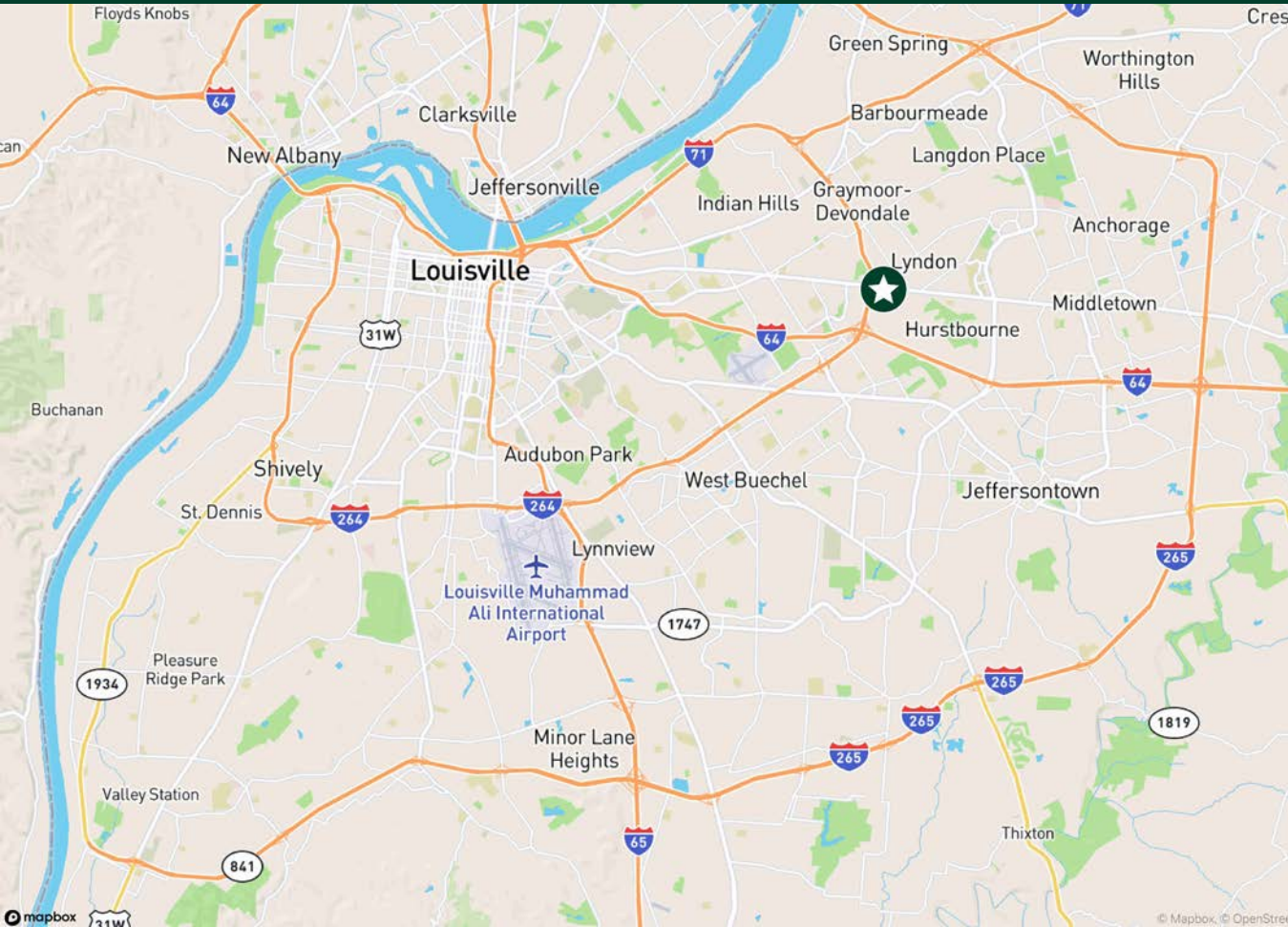


View Southeast









2024 Estimated Demographics	1 Mile	2 Miles	3 Miles	4 Miles
Population	8,872	40,239	89,134	157,235
Daytime Population	14,275	57,814	119,458	179,258
Average Household Income	\$98,902	\$116,729	\$119,120	\$123,504

Contact Us

Robert Schwartz
Senior Vice President
+1 502 412 7606
robert.schwartz@cbre.com

Clay Hunt
First Vice President
+1 502 412 7607
clay.hunt@cbre.com

© 2025 CBRE, Inc. All rights reserved. This information has been obtained from sources believed reliable but has not been verified for accuracy or completeness. CBRE, Inc. makes no guarantee, representation or warranty and accepts no responsibility or liability as to the accuracy, completeness, or reliability of the information contained herein. You should conduct a careful, independent investigation of the property and verify all information. Any reliance on this information is solely at your own risk.