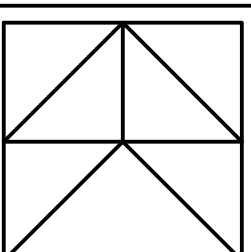
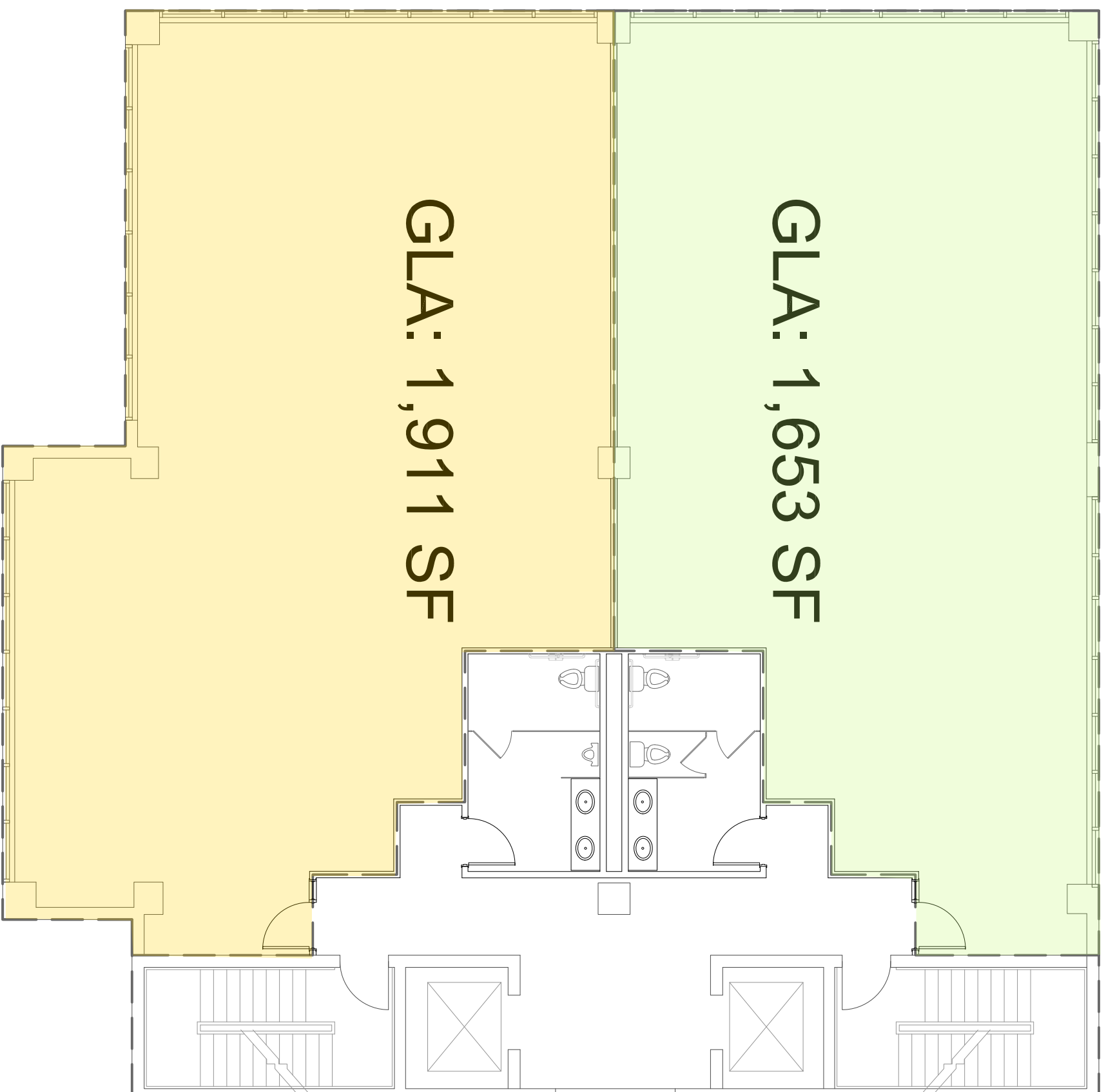
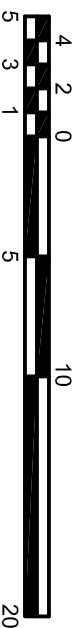


**Floor Summary**  
**GFA: 4,675 SF**  
**GLA: 3,564 SF**

**Third Floor Plan**

Scale:  $\frac{1}{8}$ " = 1'-0"



K.L. Kane Consulting, LLC  
606 Charmouth Drive  
Syracuse, NY 13207  
Phone: (315) 263-3687  
kkane@kklc.com

REVISION NUMBER & REVISION DATE

Office Spaces - 3rd Floor  
2300 West Ridge Road  
Greece, New York 14626

DRAWN BY:

CHECKED BY:

APPROVED BY:

APPROVAL DATE:

DRAWING NAME:

**Floor  
Plan**

DRAWING NUMBER:

**A-01**