



ARES
INDUSTRIAL
MANAGEMENT

RIDER DISTRIBUTION CENTER

251 EAST RIDER STREET, PERRIS, CA 92571

FOR LEASE | 354,810 SQ FT | Class A Warehouse Facility



MARK ZORN

Lic. 01303982

mark.zorn@colliers.com

+1 909 937 6318

CORY WHITMAN

Lic. 01876150

cory.whitman@colliers.com

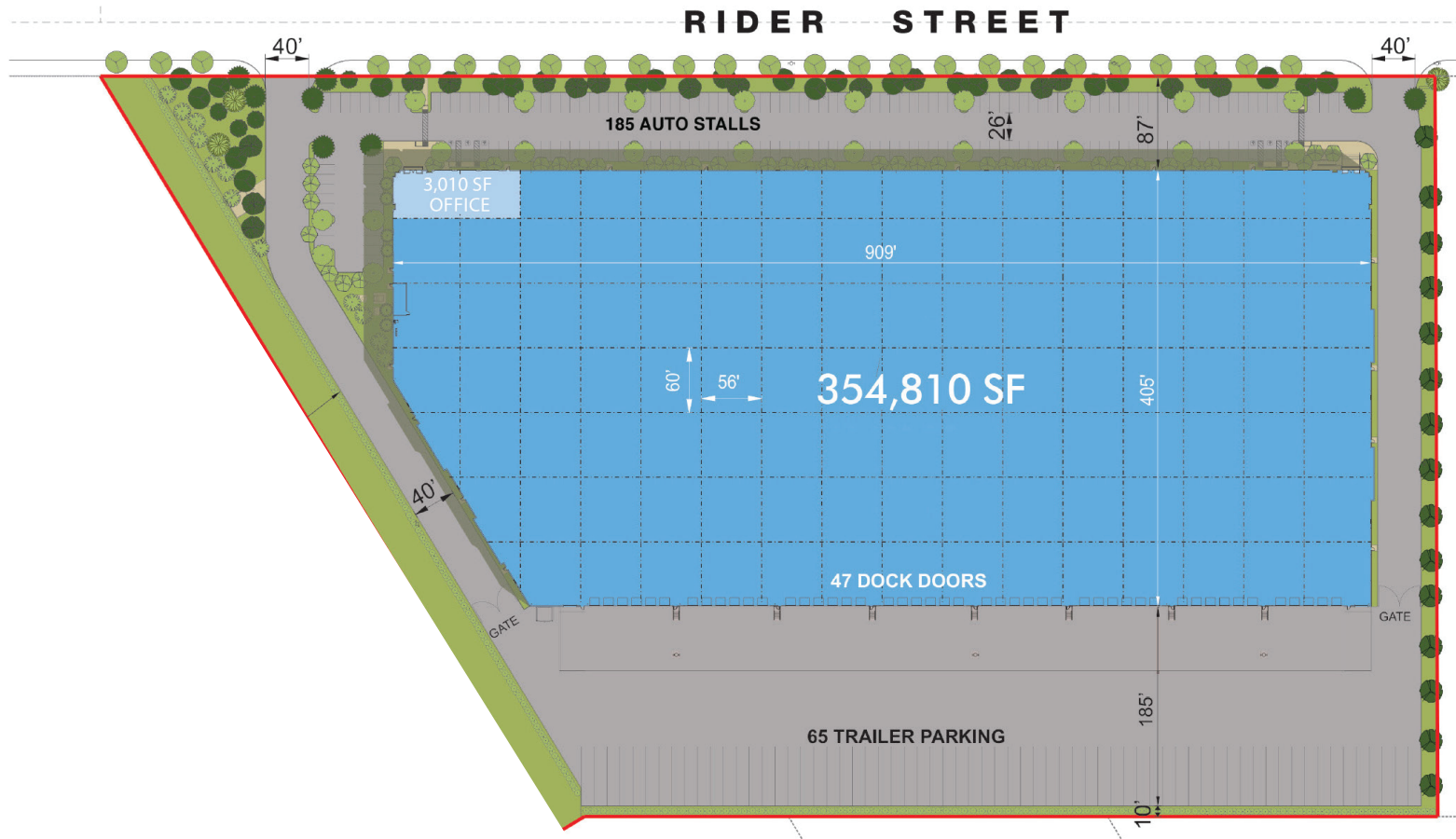
+1 909 937 6363



ARES
INDUSTRIAL
MANAGEMENT

Property FEATURES

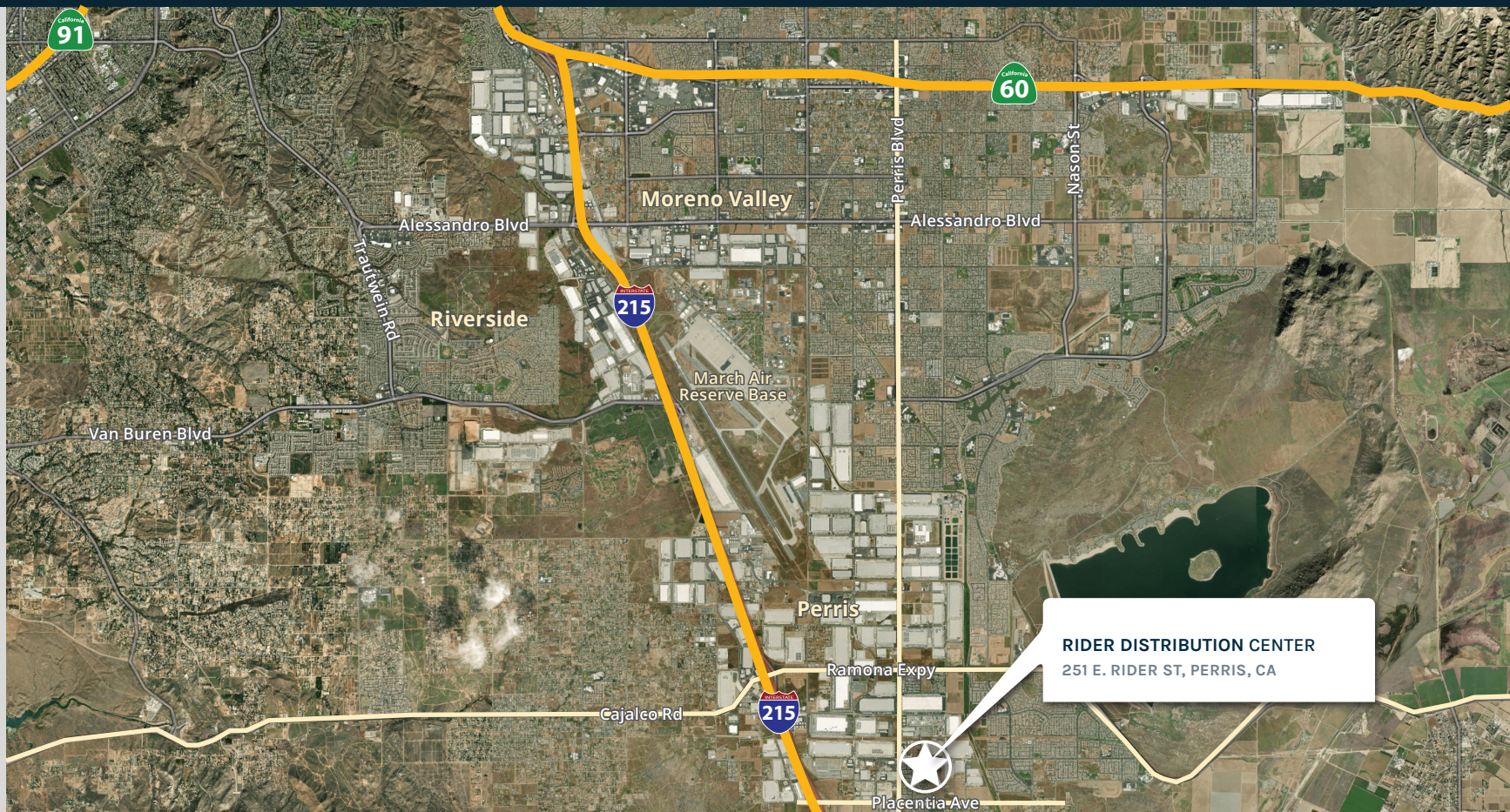
- 3,010 SF Office
- 36' Clear Height
- 47 DH Loading Doors
- (16) 40k Lb Mech. Pit Levelers Every 3rd Door
- 2 GL Loading Doors
- ESFR Sprinkler System (K-25)
- 2,500 Amp Power (Expandable to 4,000)
- 65 Trailer Parking Stalls
- 185 Auto Parking Spaces
- 185' Secured Concrete Truck Court
- LED Warehouse Lighting
- 2.5% Skylights



ARES
INDUSTRIAL
MANAGEMENT

Location HIGHLIGHTS

- 1.6 miles to the I-215 via Placentia Ave
- Less than 10 miles to Highway 60
- 6.1 miles to March Air Reserve Base (RIV)
- 27.7 miles to San Bernardino Airport (SBD)
- 30.8 miles to Ontario Intl Airport (ONT)
- 73.3 miles to the Port of LA/LB
- 23.2 miles to the UP Intermodal
- 24.5 miles to the BNSF Intermodal
- Corporate Neighbors include Ross, Wayfair, Whirlpool, Hanes, Lowes and General Mills



ARES
INDUSTRIAL
MANAGEMENT

ABOUT ARES MANAGEMENT CORPORATION

Ares Management Corporation (NYSE: ARES) is a leading global alternative investment manager offering clients complementary primary and secondary investment solutions across the credit, private equity, real estate and infrastructure asset classes. We seek to provide flexible capital to support businesses and create value for our stakeholders and within our communities. By collaborating across our investment groups, we aim to generate consistent and attractive investment returns throughout market cycles. For more information, please visit www.aresmgmt.com.



MARK ZORN

Lic. 01303982

mark.zorn@colliers.com

+1 909 937 6318

CORY WHITMAN

Lic. 01876150

cory.whitman@colliers.com

+1 909 937 6363



**ARES
INDUSTRIAL
MANAGEMENT**