

# FOR LEASE

## ±25,803 SF Industrial Building

1 Oldfield, Irvine, CA 92618

# Voit

REAL ESTATE SERVICES



### FEATURES:

- Great Irvine Spectrum Location with Immediate 405/5 Freeway Access
- ±11,500 SF of Two-Story Office Area with Excellent Glassline
- 58 Striped Parking Spaces (additional street parking)
- 24' Warehouse Clearance
- Two (2) Ground Level Loading Doors
- Sprinklered (.21 GPM/1,500 SF)
- Power: 1,200 Amp Panel (Verify)
- Close Proximity to Numerous Retail Amenities

**Trent Walker**  
Executive Vice President  
949.263.5342  
twalker@voitco.com  
Lic. #00964476

**Alton Burgess**  
Senior Vice President  
949.263.5397  
aburgess@voitco.com  
Lic. #01717094

2020 Main Street, Suite 100, Irvine, CA 92614 | 949.851.5100 • 949.261.9092 Fax

Owned and Managed by:



# Voit

REAL ESTATE SERVICES

[www.VoitCo.com](http://www.VoitCo.com)

Licensed as Real Estate Salespersons by the DRE. The information contained herein has been obtained from sources we deem reliable. While we have no reason to doubt its accuracy, we do not guarantee it. ©2024 Voit Real Estate Services, Inc. All Rights Reserved. Lic. #01991785

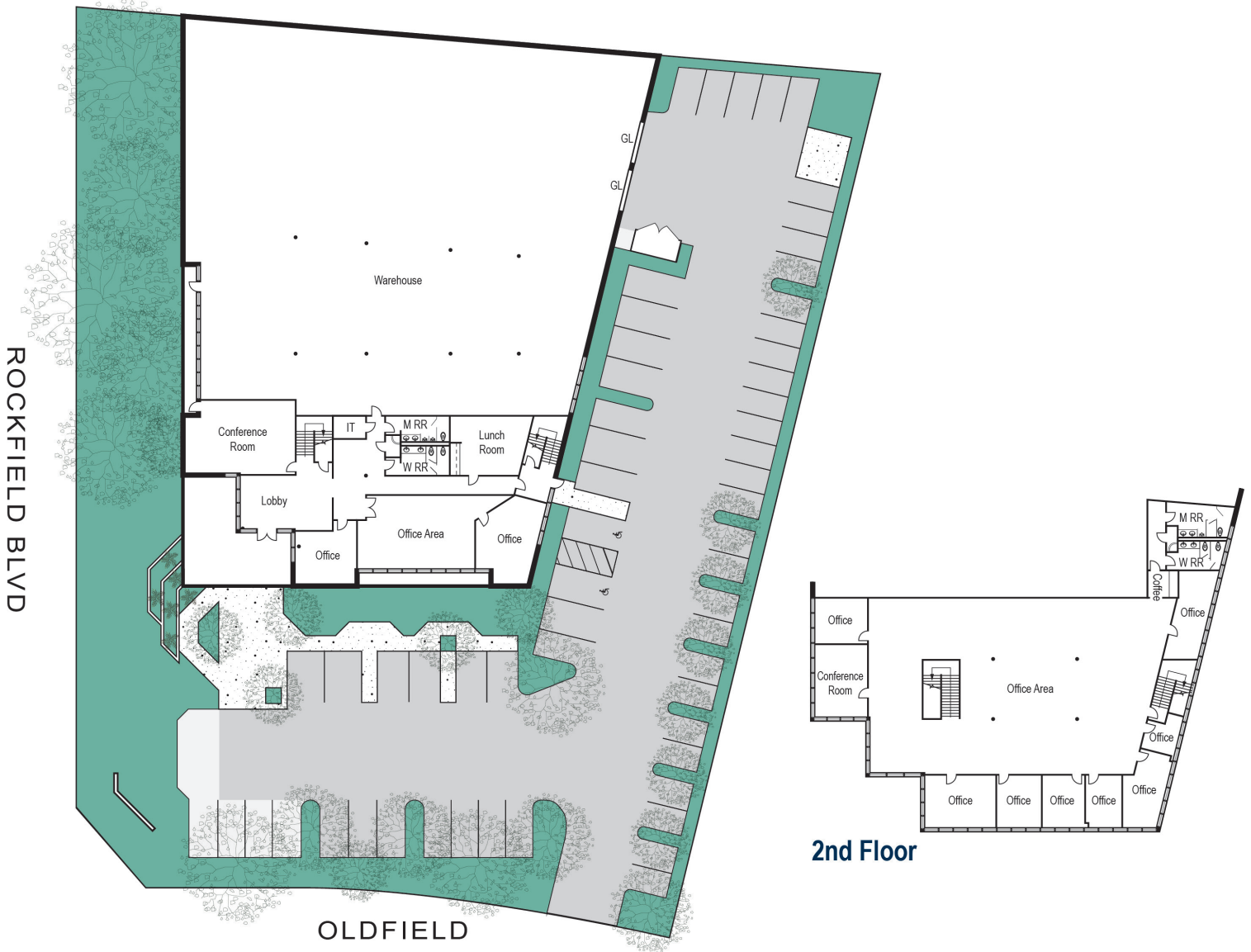
**FOR LEASE**

**±25,803 SF Industrial Building**

1 Oldfield, Irvine, CA 92618

**Voit**

REAL ESTATE SERVICES



**Trent Walker**  
Executive Vice President  
949.263.5342  
twalker@voitco.com  
Lic. #00964476

**Alton Burgess**  
Senior Vice President  
949.263.5397  
aburgess@voitco.com  
Lic. #01717094

2020 Main Street, Suite 100, Irvine, CA 92614 | 949.851.5100 • 949.261.9092 Fax

Owned and Managed by:



**Voit**

REAL ESTATE SERVICES

[www.VoitCo.com](http://www.VoitCo.com)

Licensed as Real Estate Salespersons by the DRE. The information contained herein has been obtained from sources we deem reliable. While we have no reason to doubt its accuracy, we do not guarantee it. ©2024 Voit Real Estate Services, Inc. All Rights Reserved. Lic. #01991785