

9711 - 10101 YUCCA RD

Adelanto, CA | 92301



Don Archer
Senior Vice President
951.346.0807
darcher@naicapital.com
CalDRE #01393449

NAI Capital
COMMERCIAL REAL ESTATE SERVICES, WORLDWIDE



Property Description

Discover an exceptional lease investment opportunity in the heart of the Inland Empire. This 6,000 SF industrial property is primed for success with versatile M1 Industrial zoning, heavy three-phase power, and cannabis zoning, all within an Opportunity Zone for tax savings. The property boasts a credit tenant with a 5-year lease and 2 one-year options, making it an attractive opportunity for investors. With the potential for various buildings within the yard and the seller's motivation to make a deal today, this property offers an array of possibilities for the savvy investor. All uses should be verified with City of Adelanto Planning Dept.

Property Highlights

- 5-year lease with 2 one-year options
- Credit Tenant
- Excellent potential contractor's/storage yard
- In an Opportunity Zone - Save on taxes
- Cannabis zoning - M1 Industrial zoning
- Heavy three phase power - 2000 amps
- Property with many possibilities

Offering Summary

Lease Investment

Sale Price:	\$3,000,000
Number of Units:	1
Lot Size:	4.6 Acres
Building Size:	6,000 SF
Cap Rate:	6.0%

Details



Lease Investment



Adelanto



Opportunity Zone



6,000 SF



Owner/User

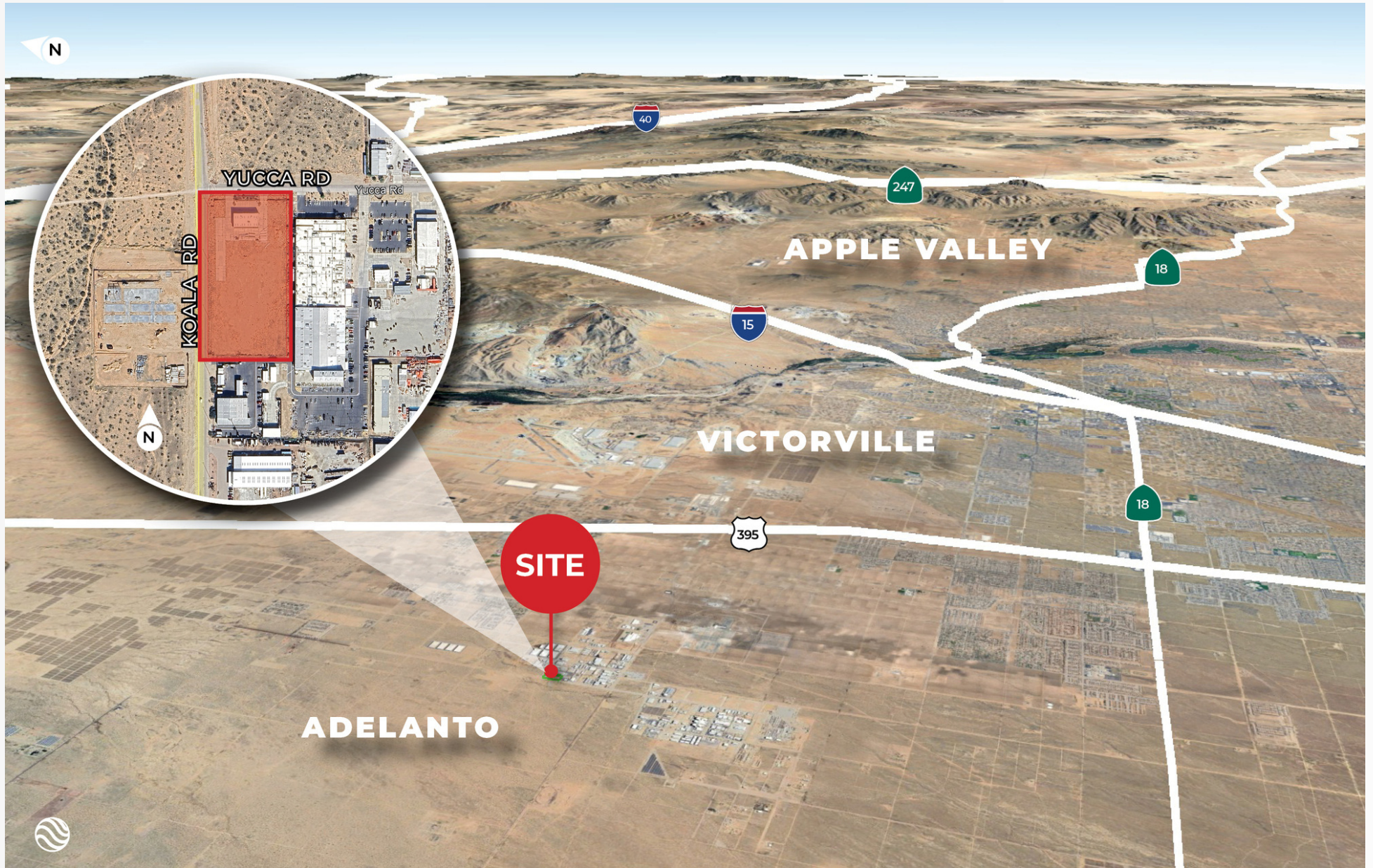


Industrial



Property Description

Discover an exceptional lease investment opportunity in the heart of the Inland Empire. This 6,000 SF industrial property is primed for success with versatile M1 Industrial zoning, heavy three-phase power, and cannabis zoning, all within an Opportunity Zone for tax savings. The property boasts a credit tenant with a 5-year lease and 2 one-year options, making it an attractive opportunity for investors. With the potential for various buildings within the yard and the seller's motivation to make a deal today, this property offers an array of possibilities for the savvy investor. All uses should be verified with City of Adelanto Planning Dept.



ADDITIONAL PHOTOS



Outside Yard



Power



Inside Building



Inside Building

9711 - 10101 YUCCA RD

Adelanto, CA | 92301

Don Archer

Senior Vice President

951.346.0807

darcher@naicapital.com

CalDRE #01393449

©NAI Capital Commercial, Inc. Content in this document may include AI generated or alerted text, images and/or analysis. No warranty, express or implied, is made as to the accuracy of the information contained herein. This information is submitted subject to errors, omissions, change of price, rental or other conditions, withdrawal without notice, and is subject to any special listing conditions imposed by our principals. Cooperating brokers, buyers, tenants and other parties who receive this document should not rely on it, but should use it as a starting point of analysis, and should independently confirm the accuracy of the information contained herein through a due diligence review of the books, records, files and documents that constitute reliable sources of the information described herein. Unedited images viewable at naicapital.com | Cal DRE Lic #02130474

NAI Capital
COMMERCIAL REAL ESTATE SERVICES, WORLDWIDE