



FOR LEASE

100 Witmer Road

Horsham, PA 19044

Property Highlights

- Two-door loading dock located at the rear of the building
- Duke's Express – serving specialty coffee and food items
- Outdoor seating area
- On-site Fitness Center
- On-site Beer Garden at 100 Lakeside
- On-site EV charging station
- Synergy at 100 Lakeside Conference Center
- Fully equipped conference facility at 200 Gibraltar



For information, please contact:

Patrick Nowlan

Senior Managing Director
t 610-755-6965
patrick.nowlan@nmrk.com

Justin Bell

Senior Managing Director
t 610-755-6979
justin.bell@nmrk.com

1000 Continental Drive
Suite 200
King of Prussia, PA 19406
t 610-265-0600

nmrk.com

NEWMARK

Licensed in Pennsylvania as Newmark Real Estate

The information contained herein has been obtained from sources deemed reliable but has not been verified and no guarantee, warranty or representation, either express or implied, is made with respect to such information. Terms of sale or lease and availability are subject to change or withdrawal without notice.



**555 FLATS
LUXURY LIVING
LESS THAN
1 MILE AWAY**



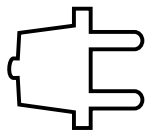
**SHOPPING AT THE
UPPER DUBLIN
PROMENADE
LESS THAN
2 MILES AWAY**



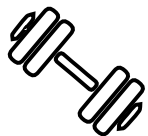
**FIVE DAYCARE
FACILITIES UNDER
5 MINUTES FROM
THE OFFICE**



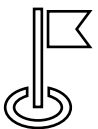
**PARKING:
4.5/1,000**



**4,000 AMPS
480/277 VOLTS**



**ON-SITE FITNESS
CENTER**



**LOCATED CLOSE TO
TWO PENNSYLVANIA
TURNPIKE ACCESS
POINTS**



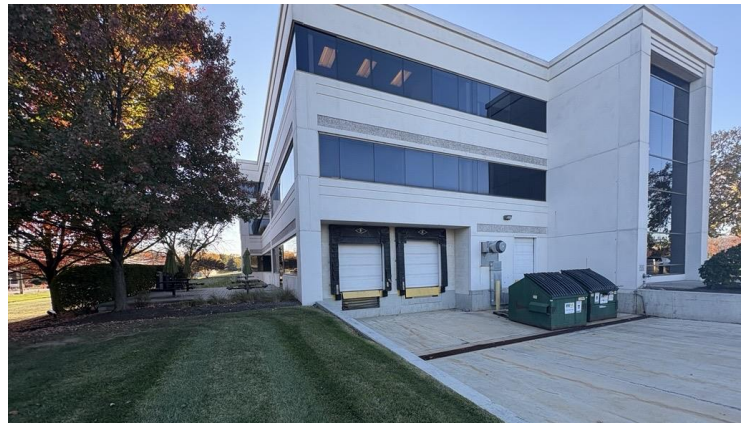
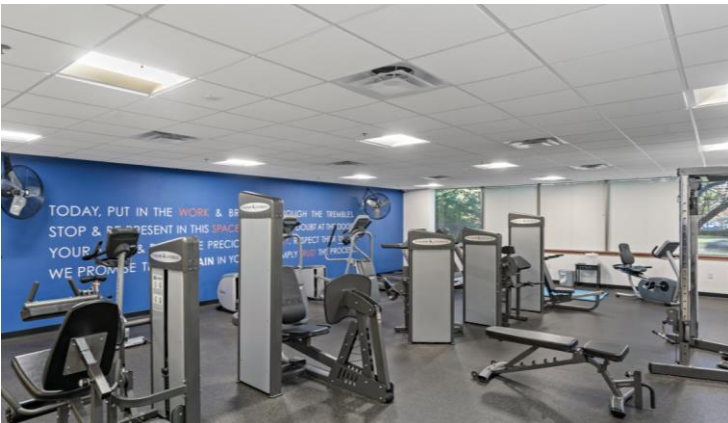
**ACCESS TO THE 5-MILE
HORSHAM POWERLINE
TRAIL WITH OUTDOOR
CIRCUITS**



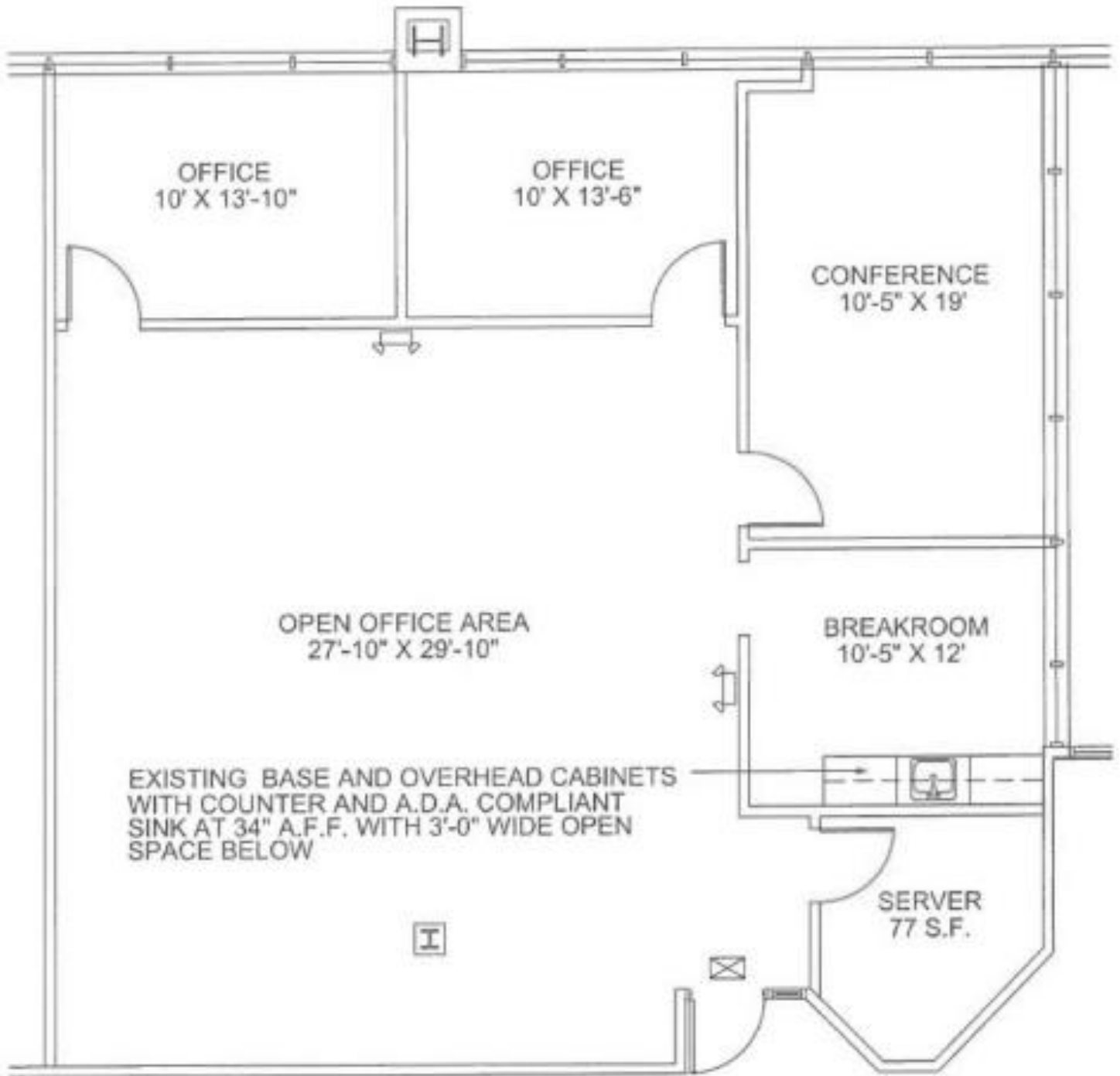


Availabilities

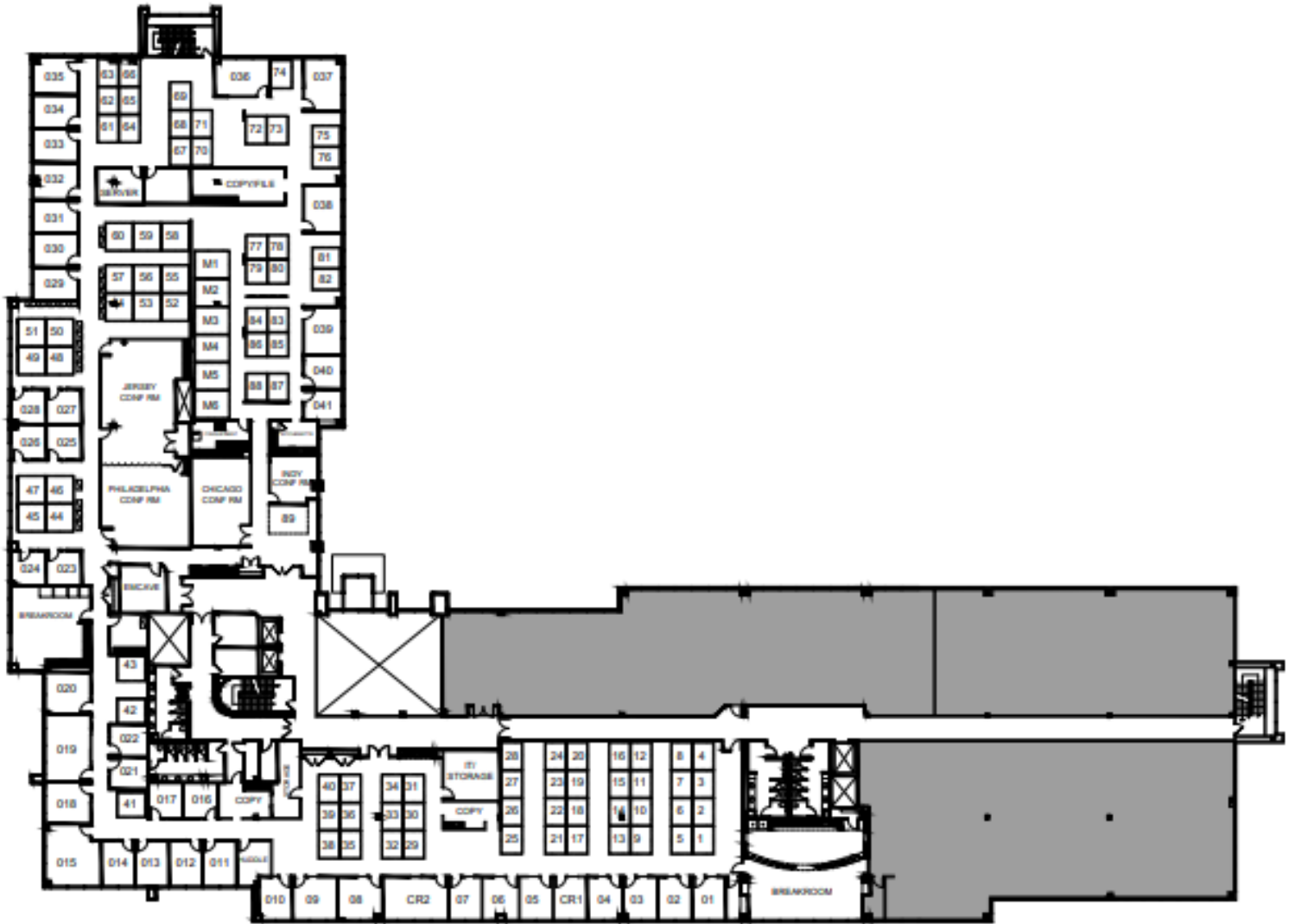
Suite 160	1,928 SF
Suite 200	31,432 SF
Suite 250	3,177 SF
Suite 280	3,692 SF
Suite 300	6,169 SF



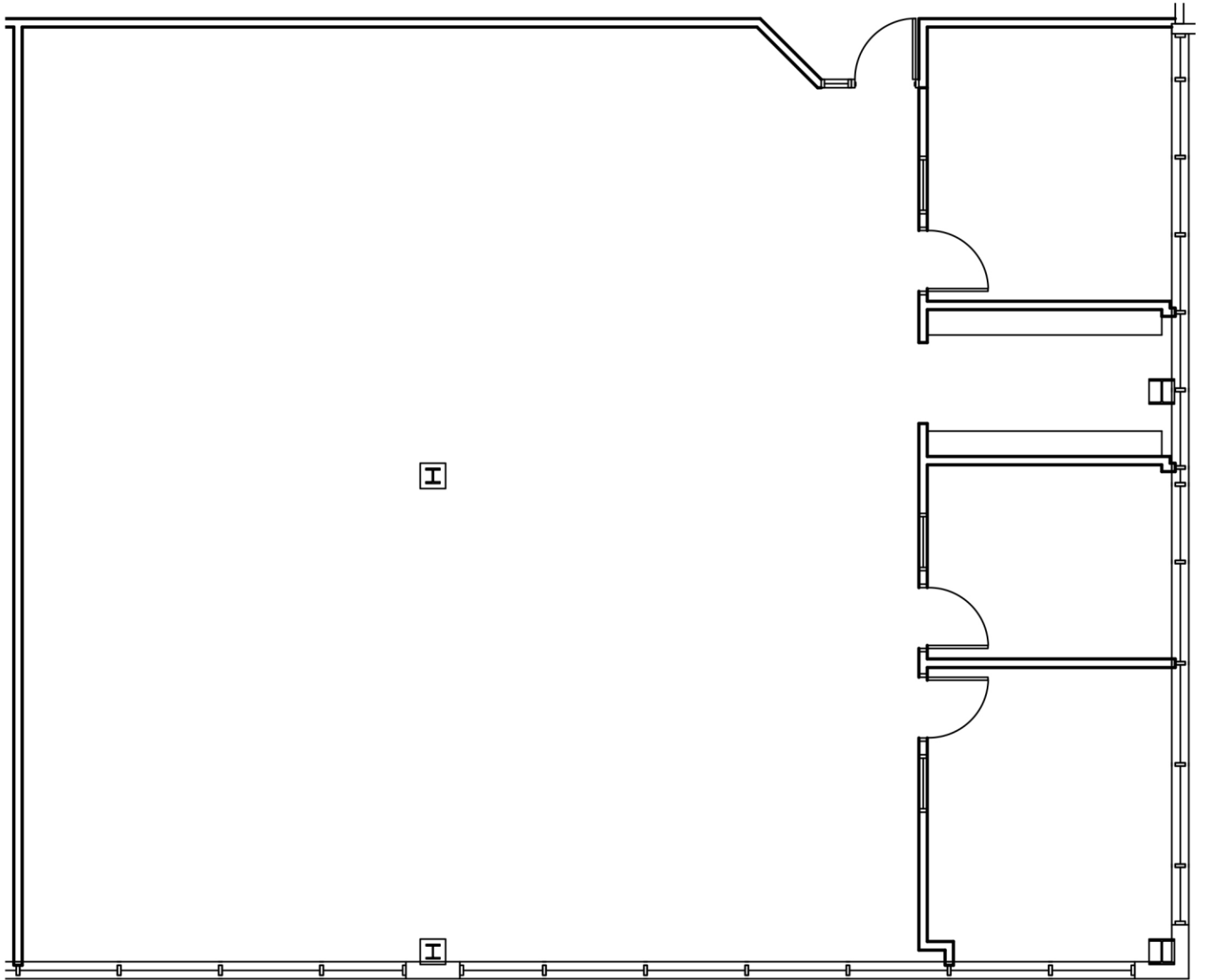
Suite 160 – 1,928 SF



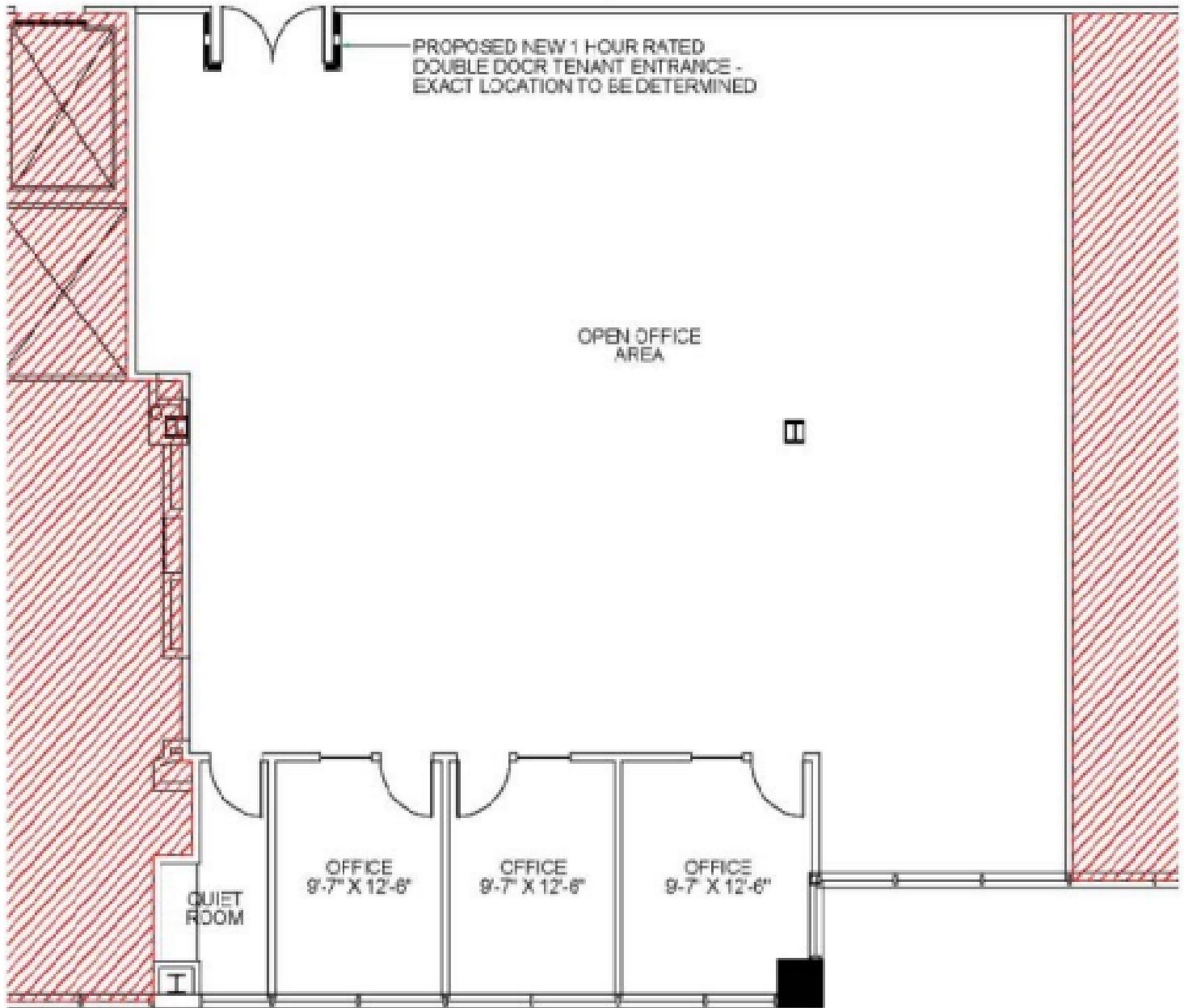
Suite 200 – 31,432 SF



Suite 250 – 3,177 SF



Suite 280 – 3,692 SF



Suite 300 – 6,169 SF

