

# 5275 Centerpoint Parkway

Groveport, OH 43125

## Contact Us

**Rick Trott**

Executive Vice President  
+1 614 348 2964  
rick.trott@cbre.com

**Shelby Gumpf Brown**

Senior Vice President  
+1 513 500 7249  
shelby.gumpf@cbre.com

**Nick Tomasone**

Senior Vice President  
+1 614 282 7659  
nick.tomasone@cbre.com

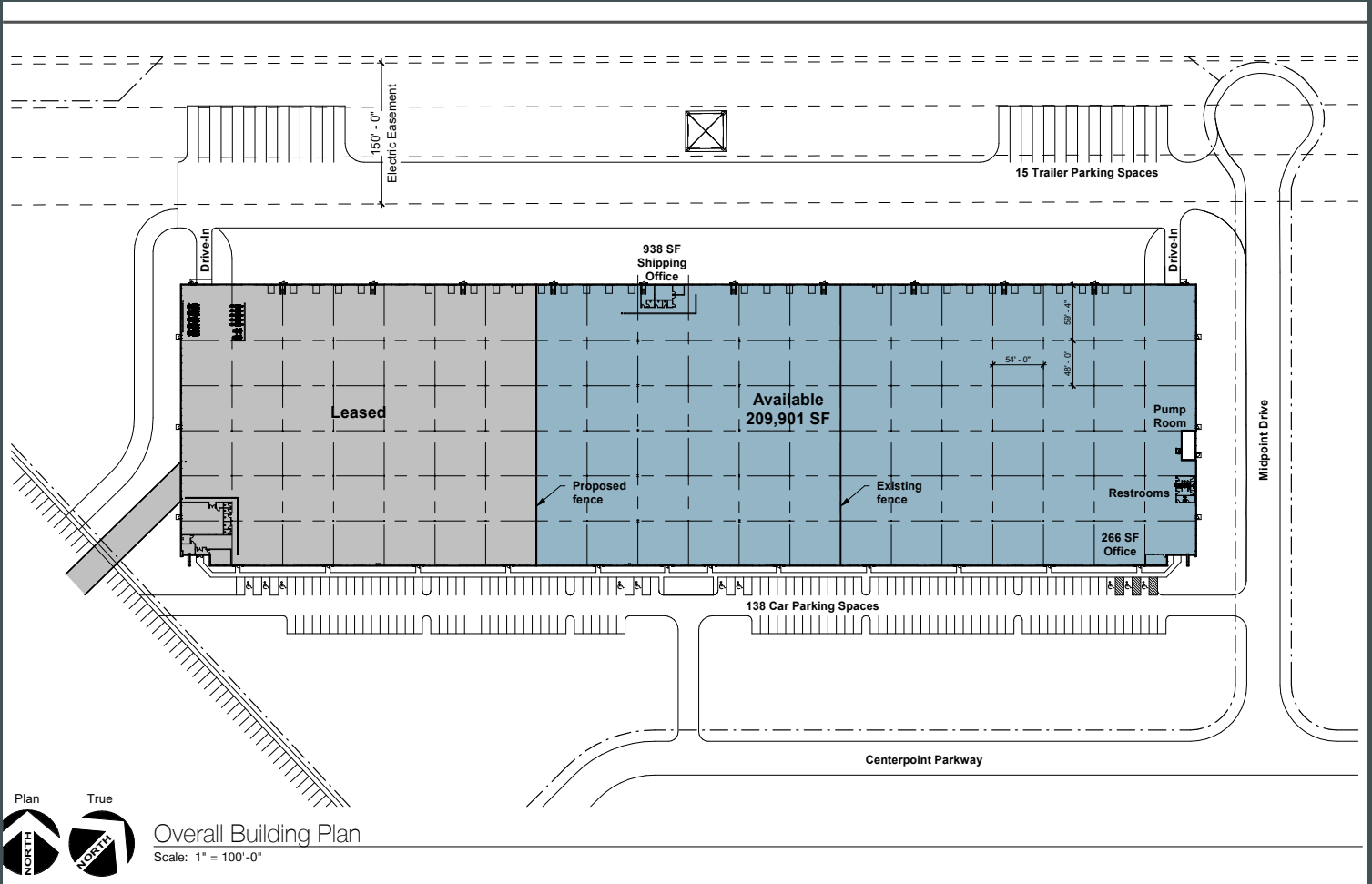
**Will Trott**

Associate  
+1 614 430 5079  
will.trott@cbre.com

100,000 - 210,000 SF Available



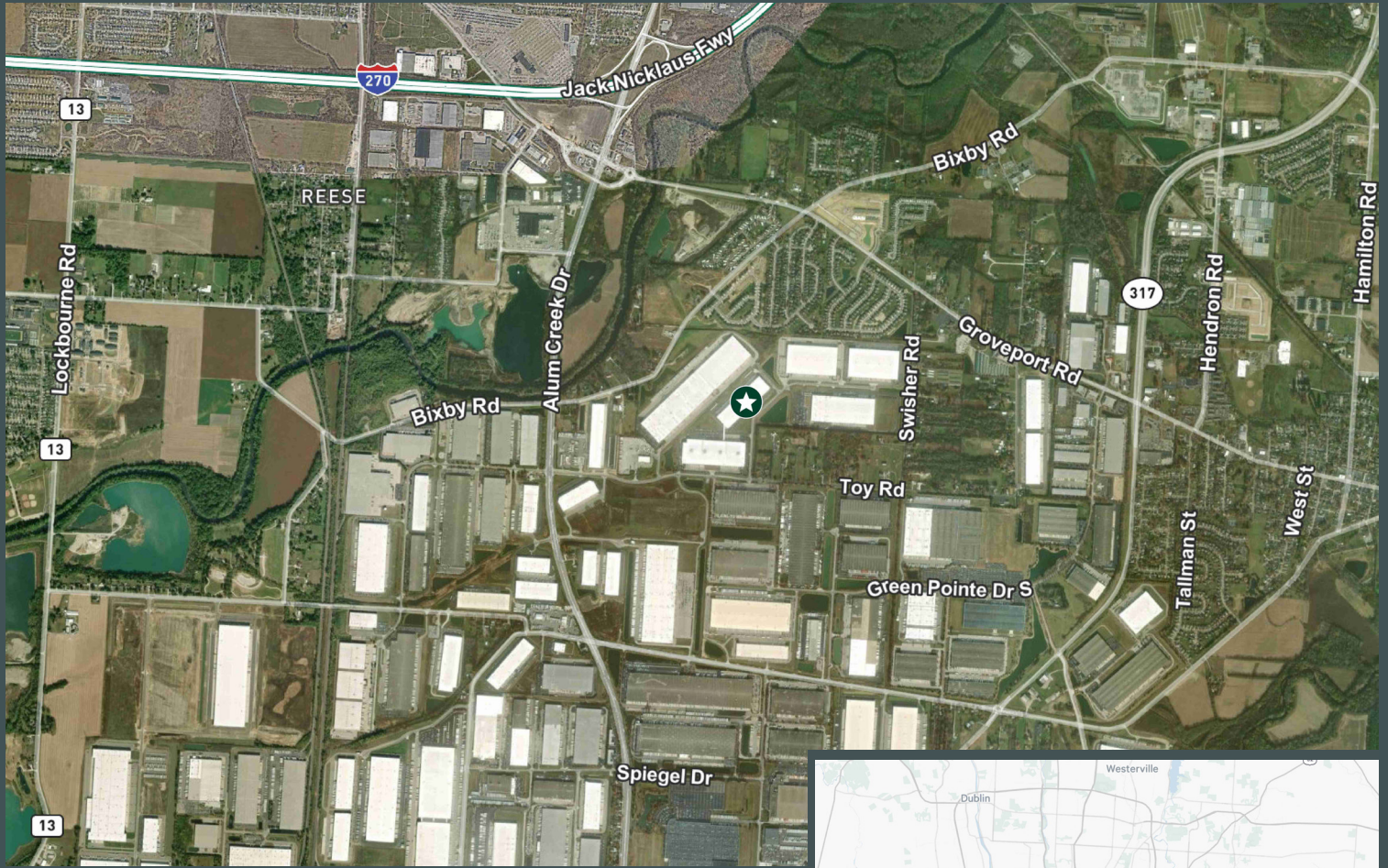
# Site Plan



# Building Details

## Key Information

Building Size:	318,769 SF	Office:	2 sets of offices & restrooms
Available Size:	100,000 - 209,901 SF	Column Spacing:	54' wide x 50' deep with 60' deep speed bay
Sublease Term:	Flexible options available; master lease expires 10/31/30	Lighting:	LED fixtures with motion sensors
Year Built:	2020	Fire Suppression:	ESFR system
Clear Height:	32'	Auto Parking:	138 spaces
Dock Doors:	21 (9' x 10') dock doors equipped with levelers, shelters, swing-arm lights, outlets, and track guards	Trailer Parking:	15 spaces
Drive-In Doors:	1 (12' x 14') drive-in door	Truck Court:	Fenced and secure

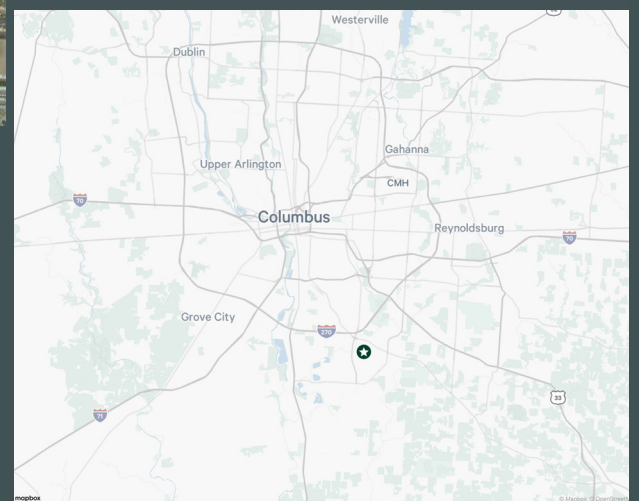


# Ease of Access

## Reach Columbus & Beyond

Located in the Rickenbacker submarket, 5275 Centerpoint Parkway offers functional industrial space with flexible sublease terms and immediate availability. The combination of the secured truck court, ample loading, and adequate clear height make the property an attractive opportunity for a variety of users.

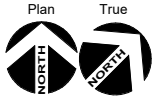
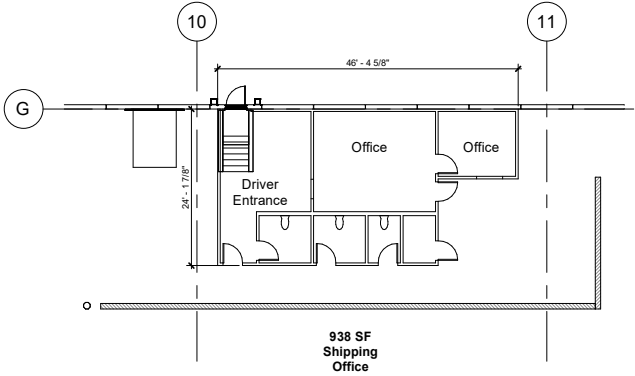
Tenants benefit from immediate access to key roadways, such as I-270, as well as the Rickenbacker International Airport. Additionally, the building has an existing 100% real estate tax abatement in place.



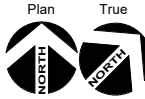
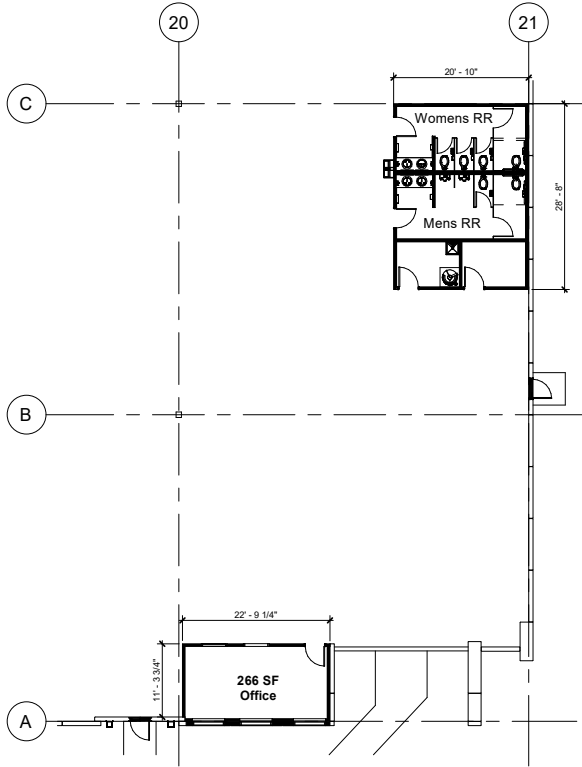
### Key Access

I-270	1.1 miles
I-70	6.3 miles
Rickenbacker Airport	3.9 Miles
U.S. 33	3.2 miles

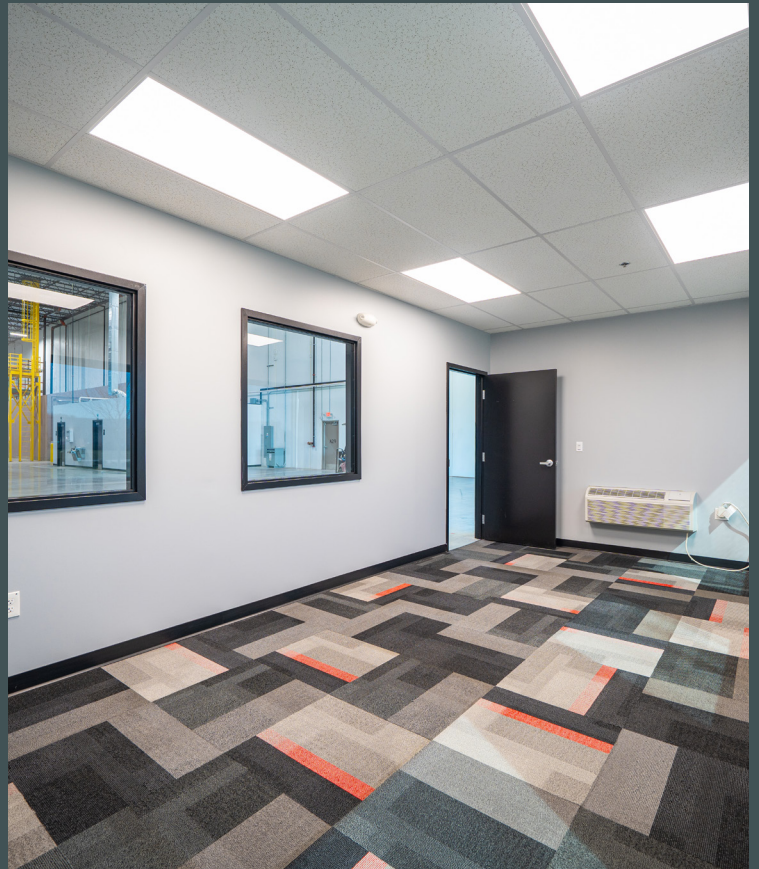
# Floor Plans



Enlarged Shipping Office  
Scale: 1/16" = 1'-0"



Enlarged Office/Restrooms  
Scale: 1/16" = 1'-0"





## Contact Us

**Rick Trott**

Executive Vice President  
+1 614 348 2964  
rick.trott@cbre.com

**Shelby Gumpf Brown**

Senior Vice President  
+1 513 500 7249  
shelby.gumpf@cbre.com

**Nick Tomasone**

Senior Vice President  
+1 614 282 7659  
nick.tomasone@cbre.com

**Will Trott**

Associate  
+1 614 430 5079  
will.trott@cbre.com

© 2026 CBRE, Inc. All rights reserved. This information has been obtained from sources believed reliable, but has not been verified for accuracy or completeness. You should conduct a careful, independent investigation of the property and verify all information. Any reliance on this information is solely at your own risk. CBRE and the CBRE logo are service marks of CBRE, Inc. All other marks displayed on this document are the property of their respective owners, and the use of such logos does not imply any affiliation with or endorsement of CBRE. Photos herein are the property of their respective owners. Use of these images without the express written consent of the owner is prohibited.