



**Available  
For Lease**

- ◆ Build to suit 2nd floor mezzanine office space
- ◆ Prime Beach drive location
- ◆ Multi-million dollar building renovation recently completed

**Downtown St. Petersburg**

Bayfront Tower is a mixed use condo development located in the heart of Downtown St. Petersburg. Available commercial space includes second floor office space. Take this opportunity to lease in the Bayfront Tower which has recently undergone a multi-million dollar renovation.

Located on Beach Drive, just steps from the city's best restaurants, shopping and entertainment. Across the street from the Tom James art museum, ONE St. Pete, Pioneer Park, Al Lang Stadium (Home of the Rowdies), the St. Petersburg Yacht Club and adjacent to Straub Park, the building could not be in a better location to enjoy all that Downtown St. Petersburg has to offer.

**Contact:  
Blakemore Kearney**

**125 FIFTH STREET SOUTH  
SUITE 201  
ST. PETERSBURG, FL 33701**

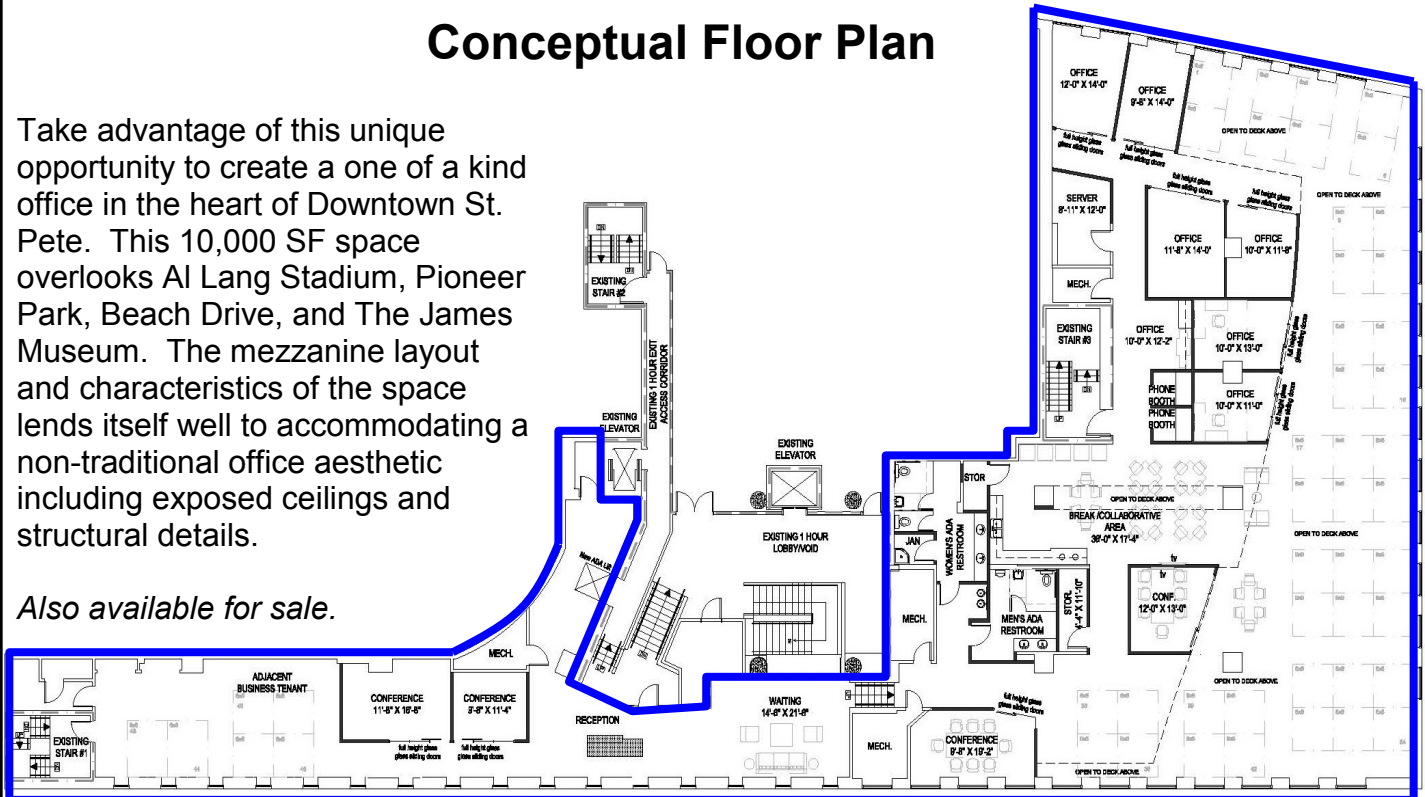
**727.823.1230 EXT. 228  
C: 727.455.5150  
F: 727.823.4067  
E: [BKearney@VectorRealty.com](mailto:BKearney@VectorRealty.com)  
W: [VectorRealty.com](http://VectorRealty.com)**

Suite Number	Size	Space Type	Lease Type	Rental Rate	Date Available
201M	10,000 RSF	Office (Built-to-Suit)	Modified Gross	Negotiable	Immediate

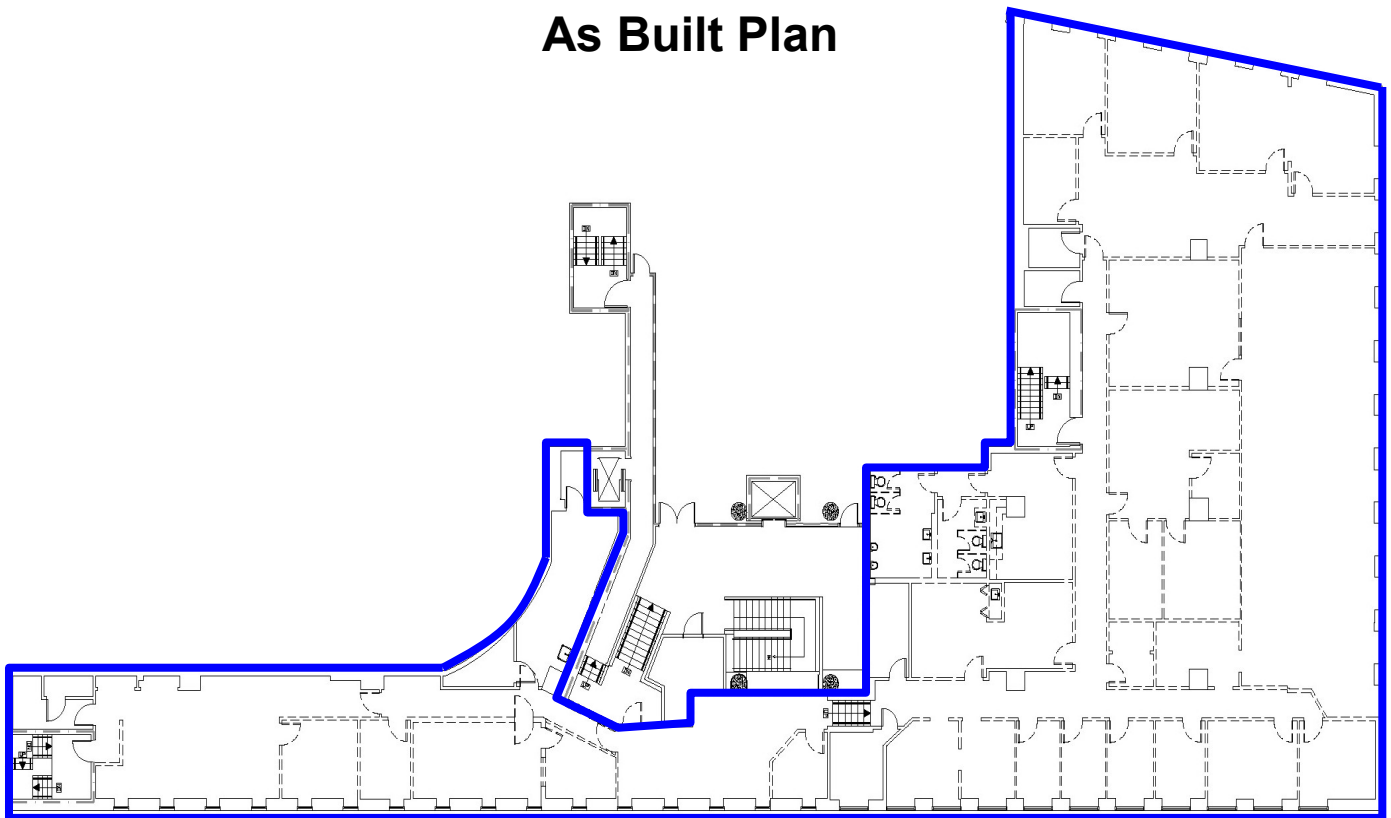
**Conceptual Floor Plan**

Take advantage of this unique opportunity to create a one of a kind office in the heart of Downtown St. Pete. This 10,000 SF space overlooks Al Lang Stadium, Pioneer Park, Beach Drive, and The James Museum. The mezzanine layout and characteristics of the space lends itself well to accommodating a non-traditional office aesthetic including exposed ceilings and structural details.

*Also available for sale.*



**As Built Plan**



## Conceptual Renderings

