



**COMMERCIAL
REAL ESTATE**
the sign of a profitable property

ENCINO TOWN CENTER

17200

ENCINO TOWN CENTER

17200 Ventura Boulevard, Encino, CA 91316



MICHAEL SHARON
(818) 572-4050 | msharon@illicre.com
DRE#01495419



PROPERTY FEATURES

17200 Ventura Boulevard, Encino, CA 91316







APPROX. 960-2,052 SF

RETAIL & OFFICE SPACES AVAILABLE

- ✓ Former nursing academy
- ✓ Former law office, perfect for office/retail/medical
- ✓ Former Landwin Management space
- ✓ High image neighborhood shopping center
- ✓ Elevator access for courtyard and 3rd floor suites
- ✓ Recessed lighting
- ✓ Lots of natural light
- ✓ Abundant convenient parking in close proximity to the premises
- ✓ Walk score (75) - very walkable

AREA AMENITIES

- ✓ Prime Encino Commons location on Ventura Boulevard
- ✓ Located in the Business Improvement District Corridor
- ✓ Heavy pedestrian and automobile traffic
- ✓ Located in front of a signalized intersection
- ✓ Neighboring tenants include: Michael's PetSmart, Verizon, T-Mobile, Chilis, Yogurtland, The Habit Burger, Sports Clips, Chase Bank, Wells Fargo, Starbucks, CVS, and Coffee Bean
- ✓ Close proximity to the 101 FWY

	1 MILE	3 MILE	5 MILE
 Population	17,023	139,801	428,404
 Avg. HH Income	\$128,995	\$121,208	\$110,743
 Daytime Pop	16,124	140,025	428,782
 Traffic Count	± 45,629 CPD ON VENTURA BLVD		

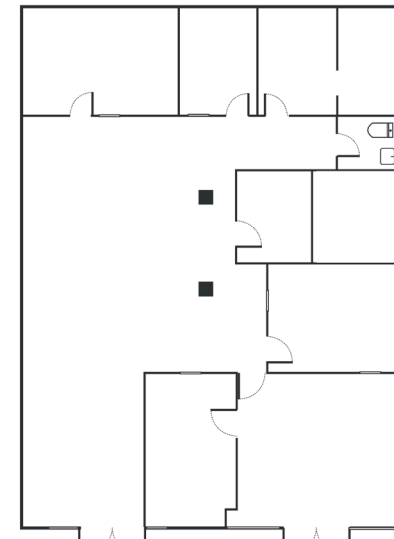
RETAIL & OFFICE SPACES
ENCINO, CA

UNIT 214-215

17200 Ventura Boulevard, Encino, CA 91316



±2,052 SF | \$3.50 PSF + \$0.92 PSF NNN | FORMER HUNTINGTON LEARNING CENTER



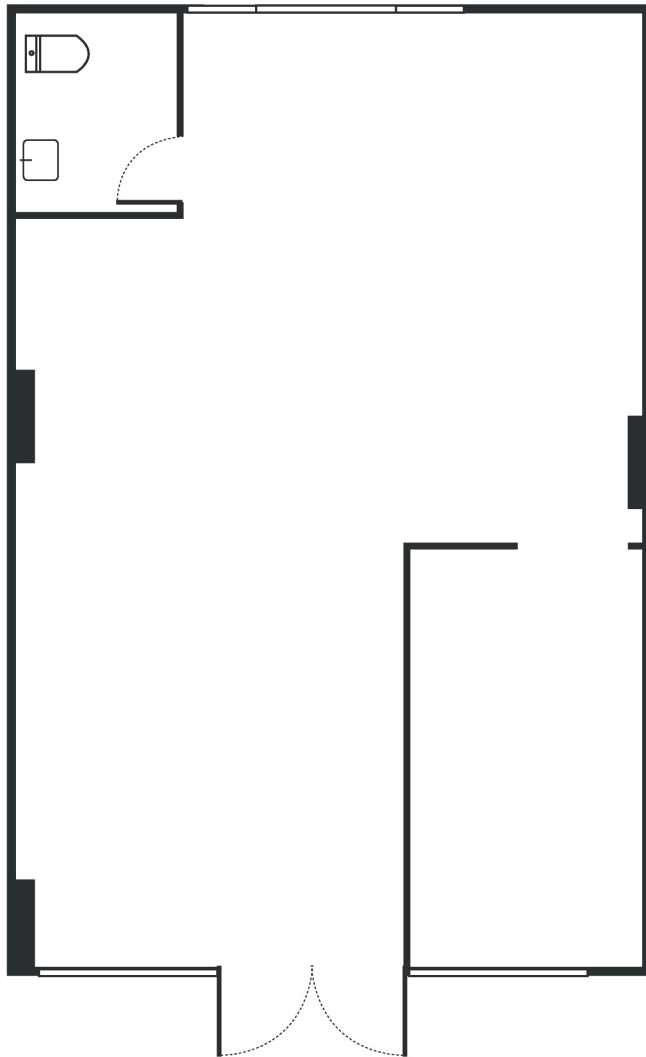
RETAIL & OFFICE SPACES
ENCINO, CA

SUITE 206

17200 Ventura Boulevard, Encino, CA 91316



±960 SF | \$3.50 PSF NNN + \$0.92 PSF PER MONTH | FORMER LANDWIN MANAGEMENT SPACE



SITE PLAN | STREET LEVEL

17200 Ventura Boulevard, Encino, CA 91316



Measurements are approximate only, and Broker does not guarantee their accuracy. Tenants are subject to change, and Broker makes no representation written or implied that the feature tenants will be occupying the space throughout the duration of the Lessee's tenancy. Lessee is to conduct their own due diligence before signing any formal agreements.

SITE PLAN | COURTYARD

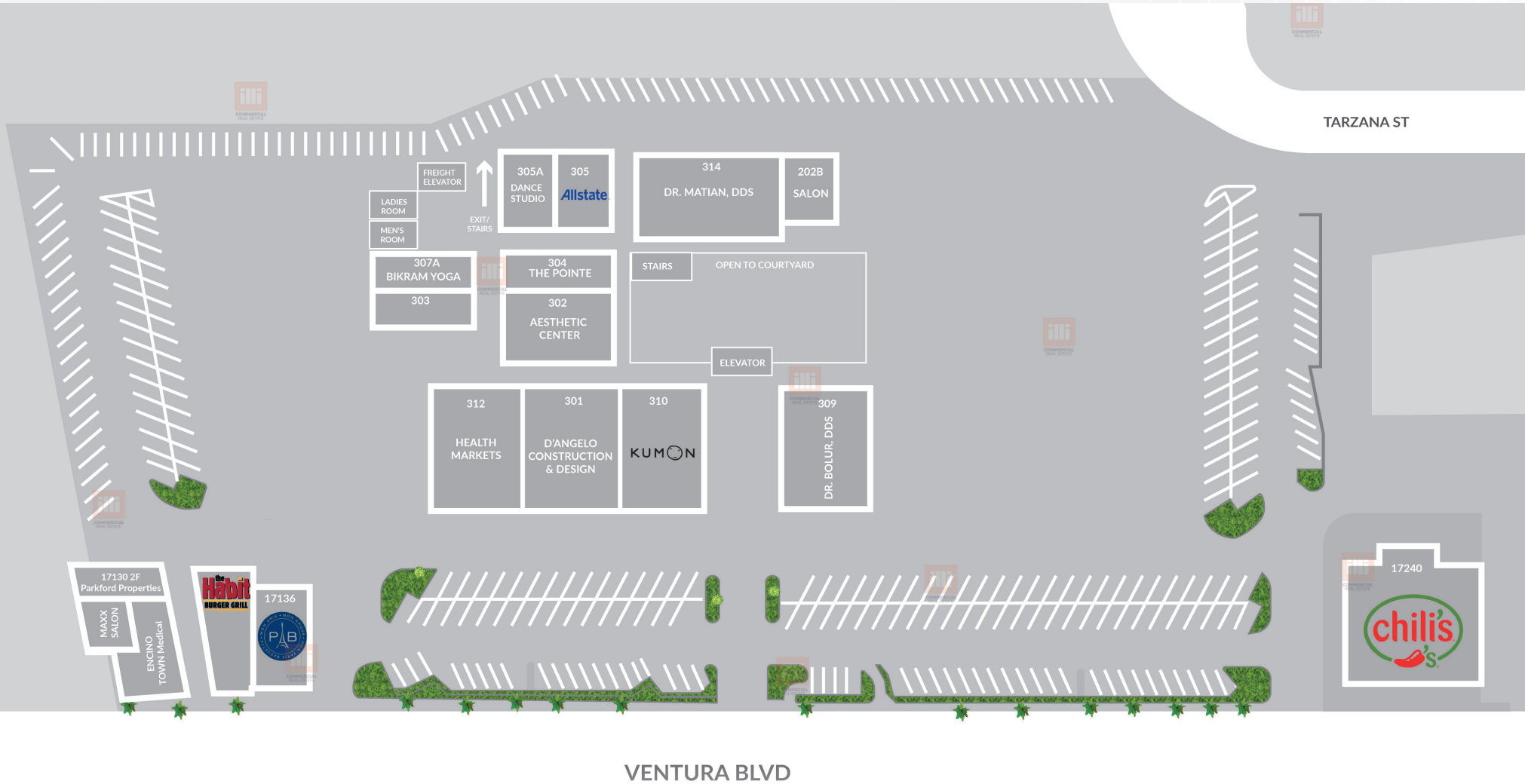
17200 Ventura Boulevard, Encino, CA 91316



Measurements are approximate only, and Broker does not guarantee their accuracy. Tenants are subject to change, and Broker makes no representation written or implied that the feature tenants will be occupying the space throughout the duration of the Lessee's tenancy. Lessee is to conduct their own due diligence before signing any formal agreements.

SITE PLAN | MEZZANINE

17200 Ventura Boulevard, Encino, CA 91316



Measurements are approximate only, and Broker does not guarantee their accuracy. Tenants are subject to change, and Broker makes no representation written or implied that the feature tenants will be occupying the space throughout the duration of the Lessee's tenancy. Lessee is to conduct their own due diligence before signing any formal agreements.



AVAILABLE



BANK OF AMERICA

Michaels

CHASE



petco



Chick-fil-A

DUNKIN'



ROSS DRESS FOR LESS



&Smart &Final.



AERIAL MAP

ENCINO TOWN CENTER



COMMERCIAL
REAL ESTATE

MICHAEL SHARON
SENIOR VICE PRESIDENT
(818) 572-4050 | msharon@illicre.com
DRE#01495419



5945 CANOGA AVENUE | WOODLAND HILLS, CA 91367 | 818.501.2212/PHONE | www.illicre.com | DRE #01834124

This information has been secured from sources we believe to be reliable, but we make no representations or warranties, expressed or implied, as to the accuracy of the information. References to square foot-age are approximate. References to neighboring retailers are subject to change, and may not be adjacent to the vacancy being marketed either prior to, during, or after leases are signed. Lessee must verify the information and bears all risk for any inaccuracies.