

FOR SALE: 1.43 ACRE DEVELOPMENT SITE

RENTON, WA



**1.43  
Acres**

S Grady Way

Talbot Rd S

**THE HOME DEPOT**

Coming Soon

Benson Rd S

INTERSTATE  
405

108th Ave



# OVERVIEW

## ○ Executive Summary/Highlights:

- Address: 901 S 7<sup>th</sup> Street, Renton, WA 98055
- Size: 1.43 Acres (62,291 SF)
- Zoning: Commercial Arterial (CA)
- Prominent access and visibility to Talbot Road S and I-405
- Proximity to numerous walkable amenities
- Parcel abuts to new Renton Home Depot with existing paved parking lot
- Purchase Price: Call Listing Broker

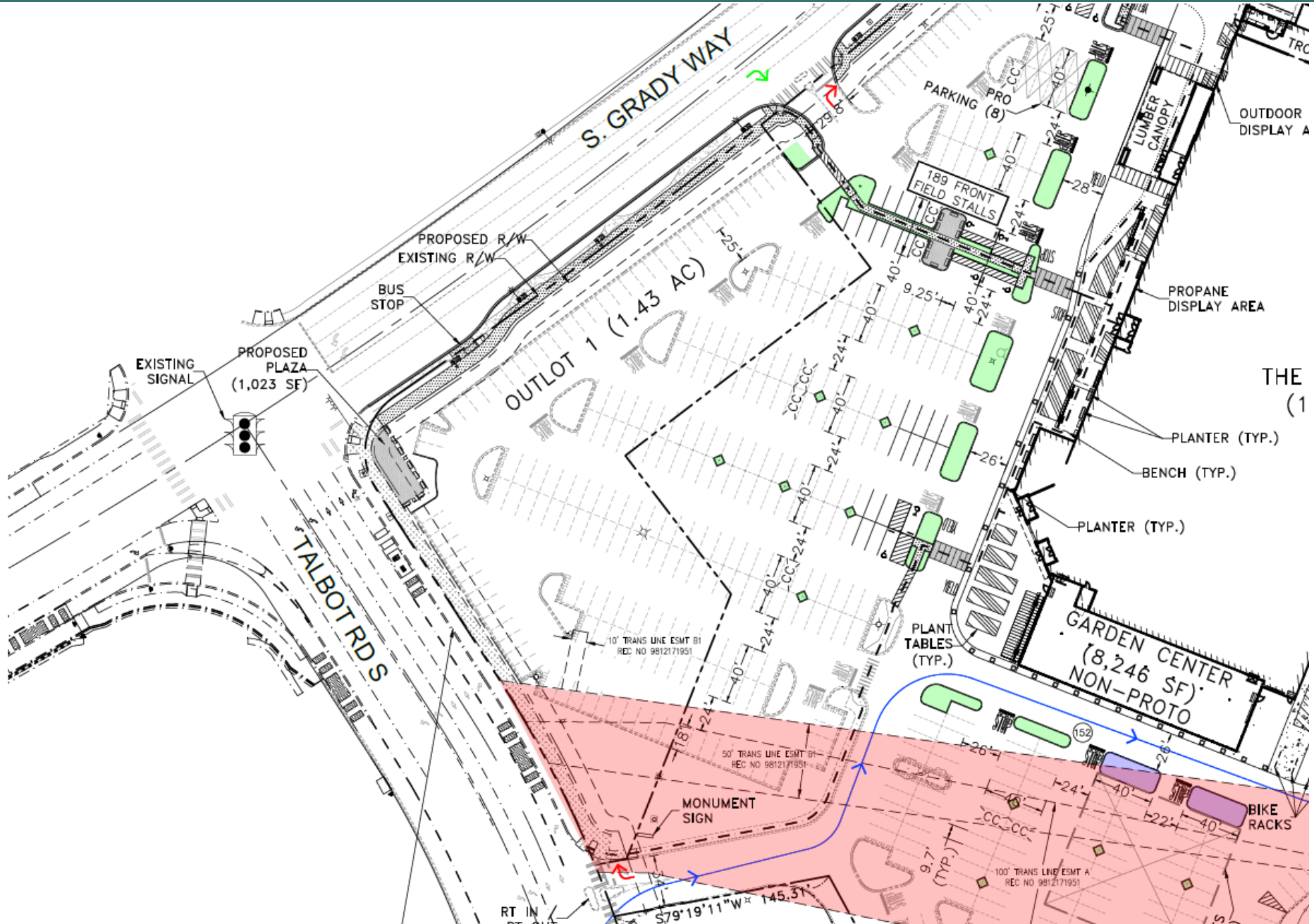
## ○ Demographics:

- Population: 47,723 (2 Mile Radius) 268,121 (5 Miles Radius)
- Median Age: 35 Yrs. (2 Mile Radius) 36.4 (5 Mile Radius)
- Households: 19,384 (2 Mile Radius) 98,241 (5 Mile Radius)
- Total Annual Consumer Expenditure: \$1.37B (2 Mile Radius) \$7.78 (5 Mile Radius)
- Average Household Income: \$100,304 (2 Mile Radius) \$117,993 (5 Mile Radius)
- Median Home Value: \$496,893 (2 Mile Radius) \$551,161 (5 Mile Radius)
- Day Time Employment: 38,083 (2 Mile Radius) 157,787 (5 Mile Radius)

## ○ Zoning:

- The CA Zone provides for a wide variety of retail sales, services, and other commercial activities along high-volume traffic corridors. Residential uses may be integrated into the zone through mixed-use buildings
- Permitted Uses: Retail / Medical, Dental and General Office / General Services / Recreation / Day Care Services / Educational Uses / Vehicle Related Uses
- Land Use Zoning Table: <https://www.codepublishing.com/WA/Renton/#!/Renton04/Renton0402/Renton0402060.html>
- Development Standards: <https://www.codepublishing.com/WA/Renton/html/Renton04/Renton0402/Renton0402120A.html>
- Mixed-Use Development: <https://www.codepublishing.com/WA/Renton/#!/Renton04/Renton0404/Renton0404150.html#4-4-150>

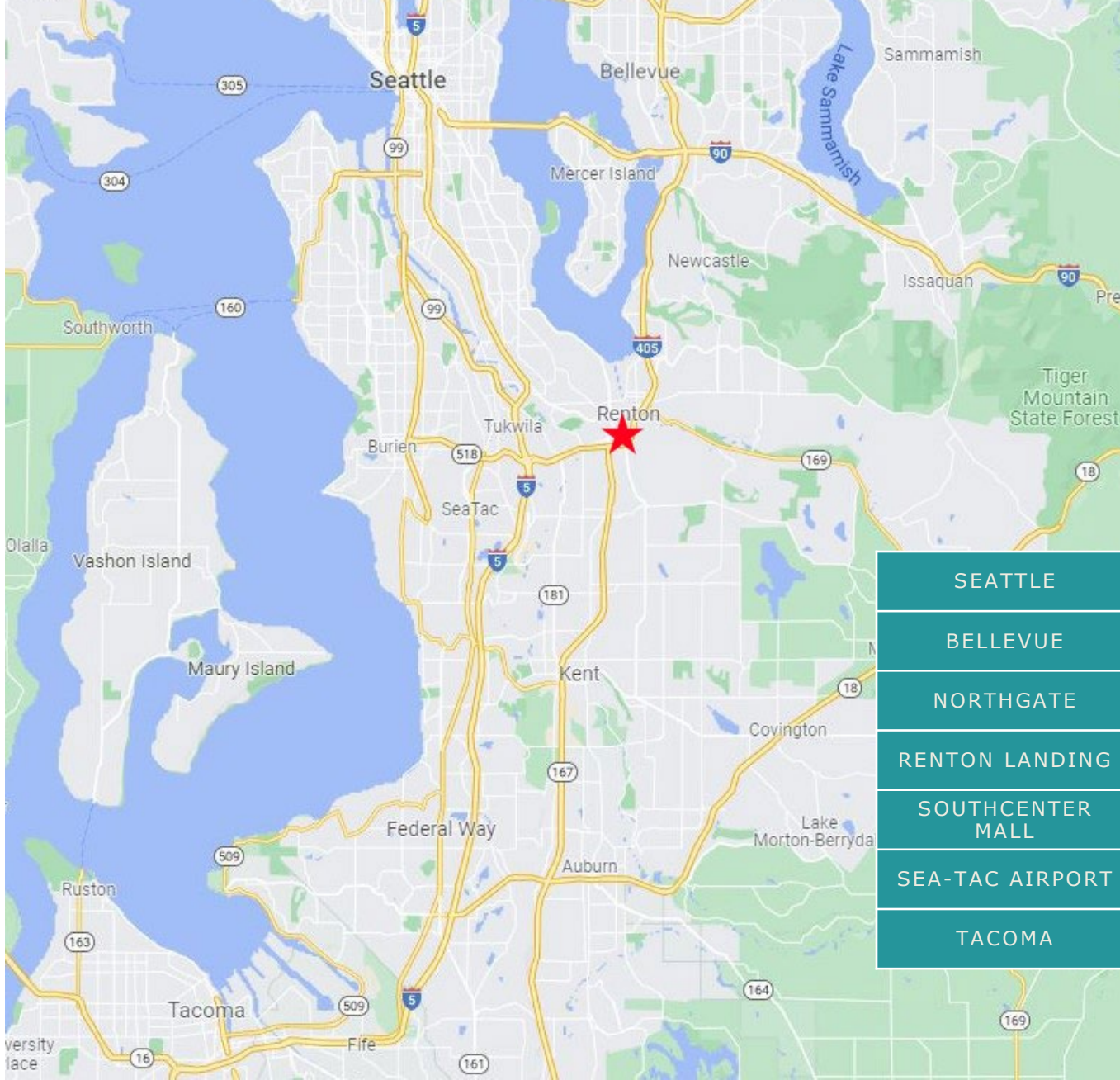
# SITE PLAN



# AERIAL OVERVIEW



# DRIVE TIMES | DISTANCES



SEATTLE	14.2 MILES	16 MINS.
BELLEVUE	10.8 MILES	13 MINS.
NORTHGATE	22.2 MILES	26 MINS.
RENTON LANDING	1.8 MILES	6 MINS.
SOUTHCENTER MALL	3.4 MILES	8 MINS.
SEA-TAC AIRPORT	6.1 MILES	11 MINS.
TACOMA	25.3 MILES	30 MINS.



## NORTHWEST RETAIL PARTNERS LTD.

224 WESTLAKE AVE N, SUITE 500  
SEATTLE WA 98109  
206-343-9204

### MARKETED BY

KYLE WALDERHAUG  
LIC #118285  
KYLE@NWRETAIL.COM

**This Offering Memorandum has been prepared by Northwest Retail Partners, LTD. (NWRP) and has been approved for distribution by the owner. The information has been secured from sources NWRP believes to be reliable, but NWRP makes no representations or warranties, expressed or implied, as to the accuracy of the information. It is the responsibility of each individual to conduct thorough due diligence on any and all information regarding the property to determine its accuracy and completeness.**