



Small Industrial Space for Lease

**25606 OLD KANSAS CITY ROAD, SUITE 1
PAOLA, KANSAS**

Property Highlights

- 2,100 sf available
- Excellent access to 169 Highway
- Constructed in 2008
- C-2 zoning for commercial and light industrial
- Drive-in loading
- 16' - 22' clear height
- 2nd level mezzanine office
- Excellent space for contractor or other service industry use
- Lease rate \$10.50/sf, NNN

For information, please contact:

Thomas Gentry

Director

t 816-268-4249

tgentry@nzimmer.com

1220 Washington Street, Suite 300
Kansas City, MO 64105

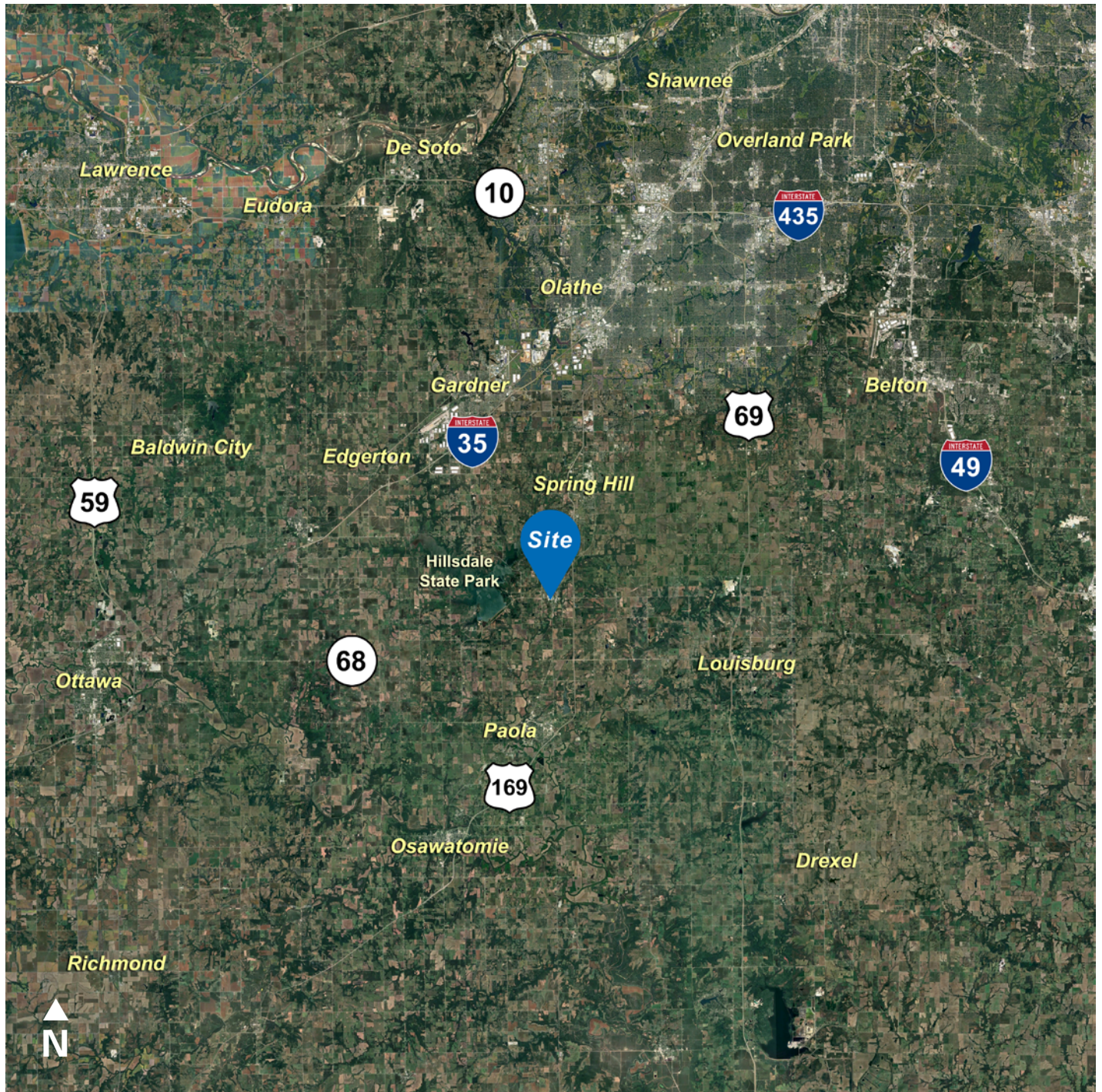
nmrkzimmer.com



NEWMARK
ZIMMER

The information contained herein has been obtained from sources deemed reliable but has not been verified and no guarantee, warranty or representation, either express or implied, is made with respect to such information. Terms of sale or lease and availability are subject to change or withdrawal without notice.

25606 OLD KANSAS CITY ROAD, PAOLA, KANSAS



CONTACT

Thomas Gentry

Director

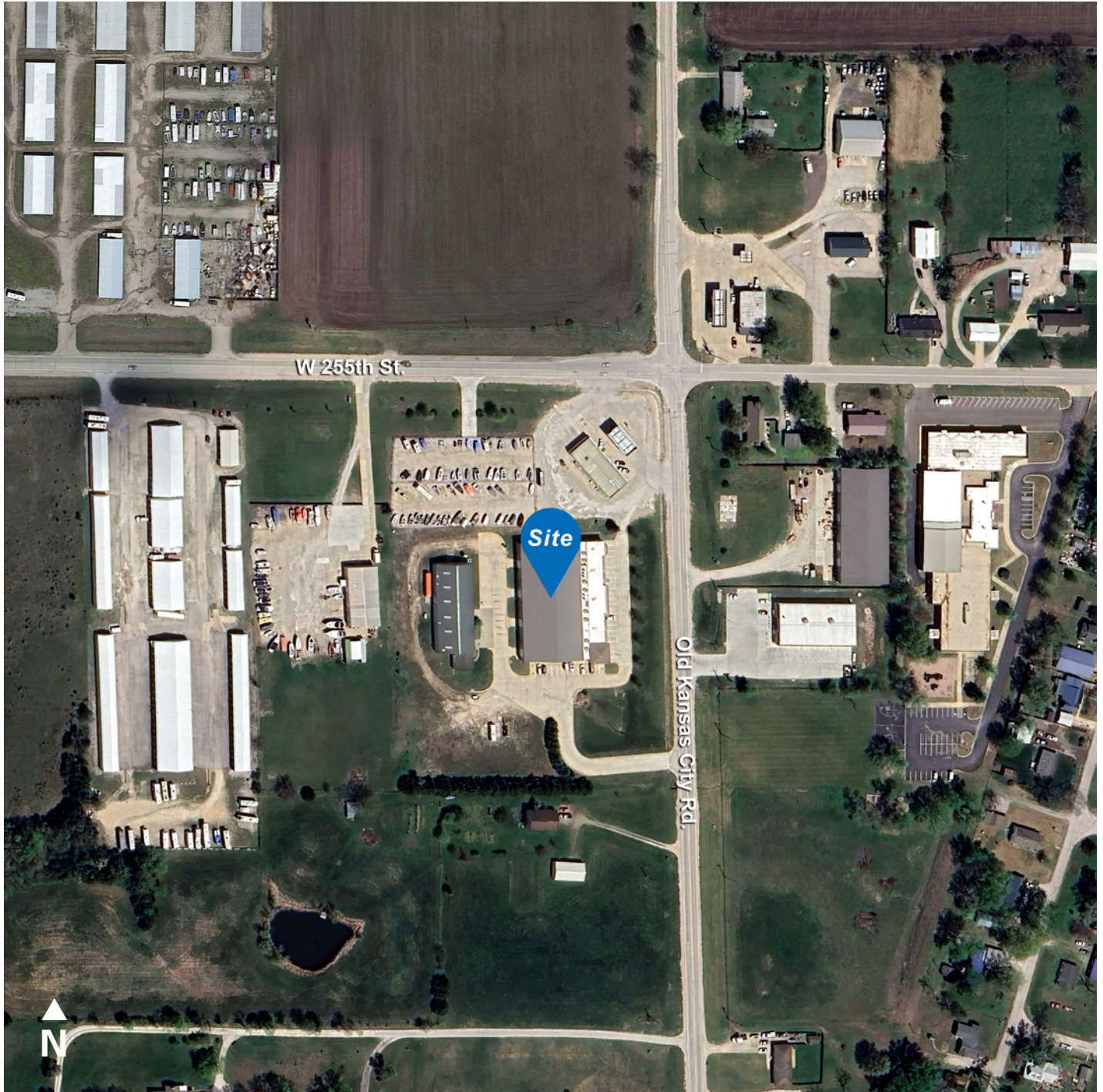
t 816-268-4249

tgentry@nzimmer.com

nmrkzimmer.com

NEWMARK
ZIMMER

25606 OLD KANSAS CITY ROAD, PAOLA, KANSAS



CONTACT

Thomas Gentry

Director

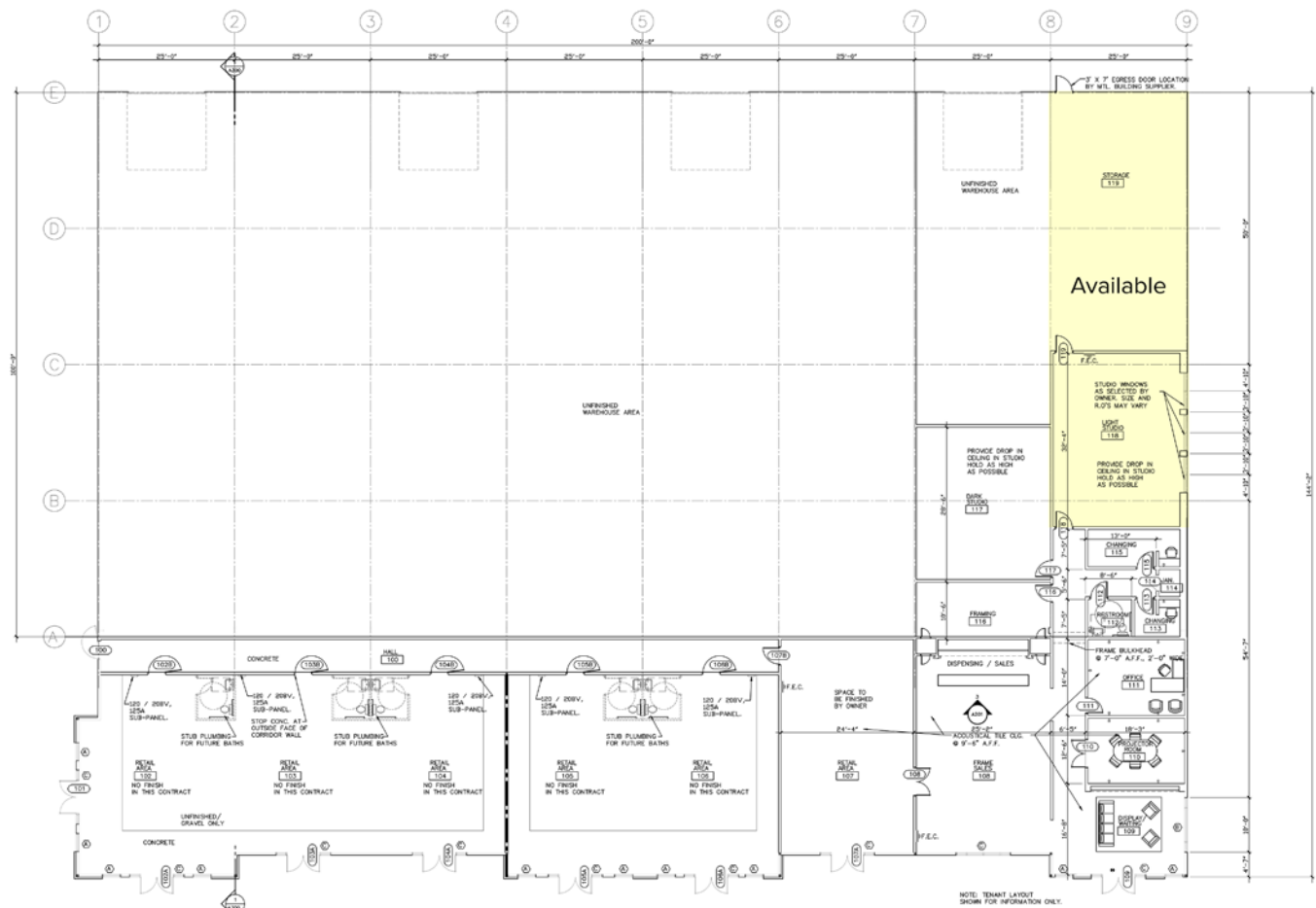
t 816-268-4249

tgentry@nzimmer.com

nmrkzimmer.com

NEWMARK
ZIMMER

Floor Plan



CONTACT

Thomas Gentry

Director

t 816-268-4249

tgentry@nzimmer.com

nmrkzimmer.com