



# Sonoma Marketplace

201 W. NAPA STREET  
SONOMA | CA

FOR INFORMATION, CONTACT:

## BRIAN ALT

Senior Leasing Manager  
916-200-9446  
balt@crosspointrealty.com  
CA DRE #01504949

## CARTER HEMMING

chemming@crosspointrealty.com  
CA DRE #01123464

## KATHY DEOCHOA

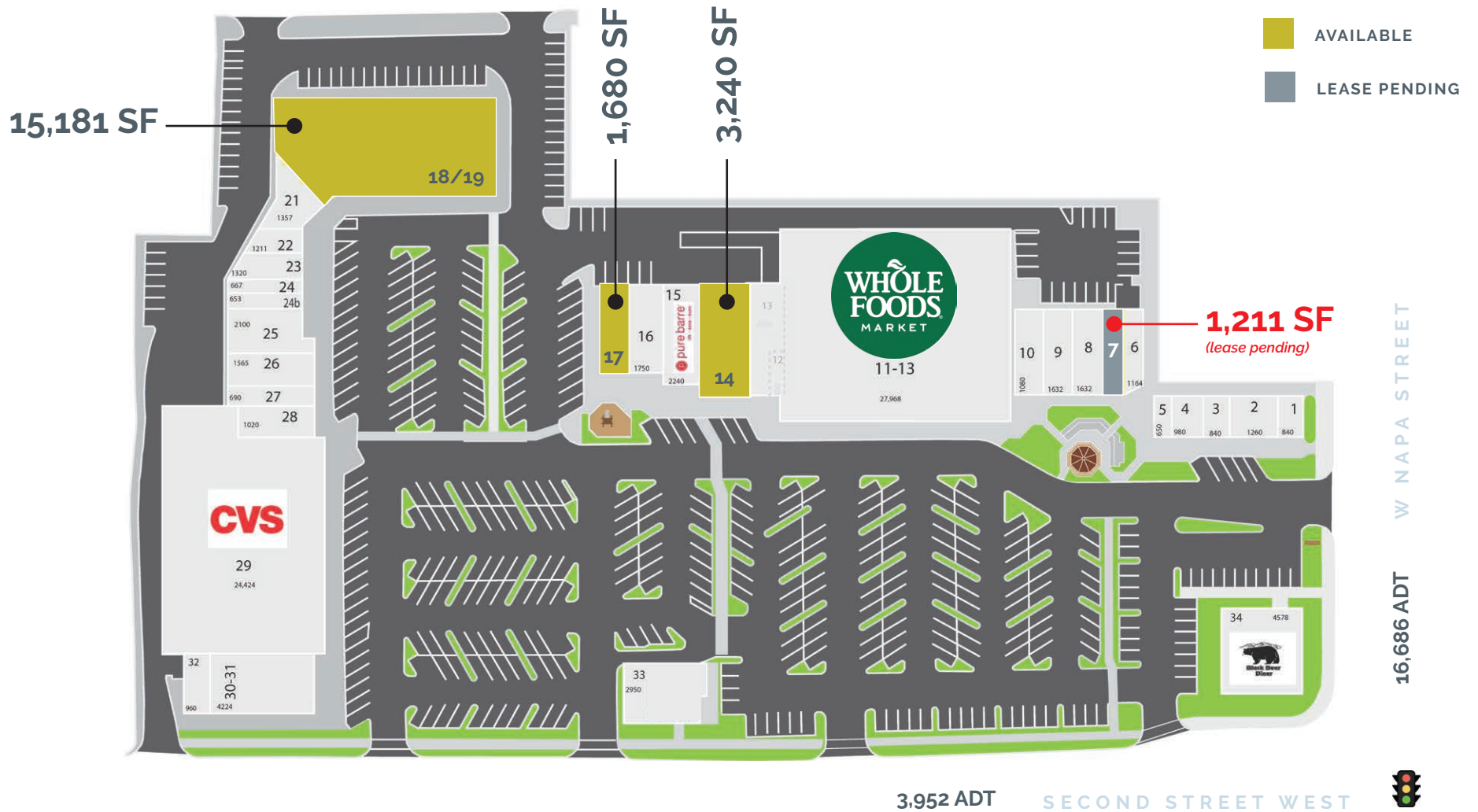
kdeochoa@crosspointrealty.com  
CA DRE #01871554



SUITE	SF	RENT	NNN
7	1,211 <i>(lease pending)</i>	Inquire	\$10
17	1,680	Inquire	\$10
14	3,240	Inquire	\$10
18/19	15,181	Inquire	\$10

Seeking Drug Store, Sporting Goods,  
or Grocery Store





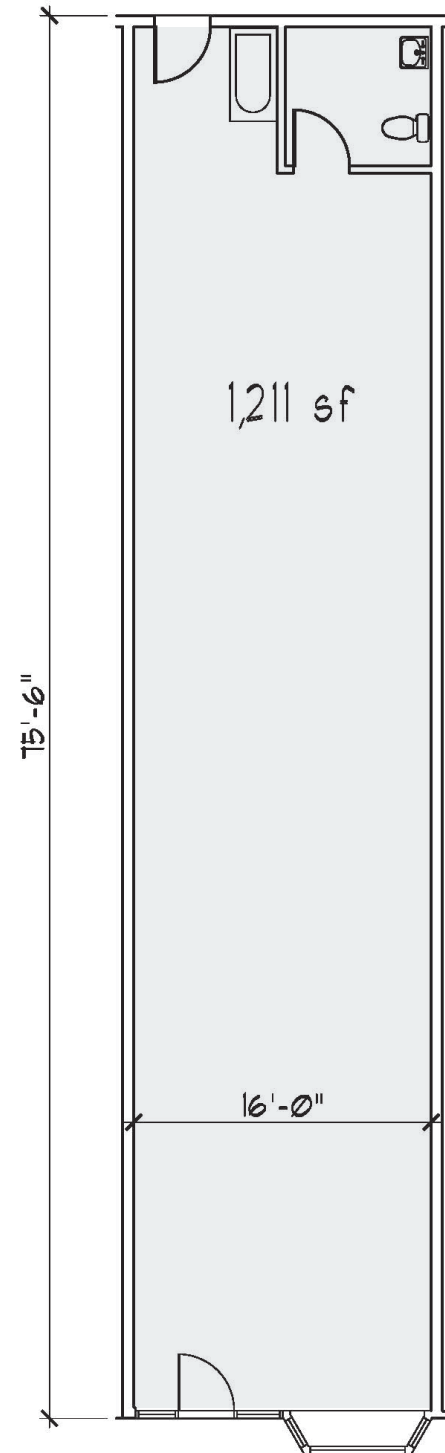
**SUITE TENANT**

01-02	The Toy Shop	10	Marketplace Haircutters	22	Studio Sun & Beauty	29	CVS
03	Sonoma Optometry	11-13	Whole Foods	23	Nail Pro	30-31	Round Table Pizza
04	Filigree Jewelry	<b>14</b>	<b>3,240 SF AVAILABLE</b>	24	Tip Top Cleaners	32	Valley of the Moon Skate Shop
05	Equator Coffee	15	Pure Barre	25	Launderland	33	BMO Bank
06	Darling, an Ice Cream Shop	16	Fine Line Art Supply	26	Happy Garden Restaurant	34	Black Bear Diner
<b>07</b>	<b>1,211 SF LEASE PENDING</b>	<b>17</b>	<b>1,680 SF AVAILABLE</b>	27	Sweet Straw		
08	Sourdough and Co.	<b>18/19</b>	<b>15,181 SF AVAILABLE</b>	28	A New Image Salon		
09	Bangkok g Thai Restaurant	21	Home Grown Bagels				



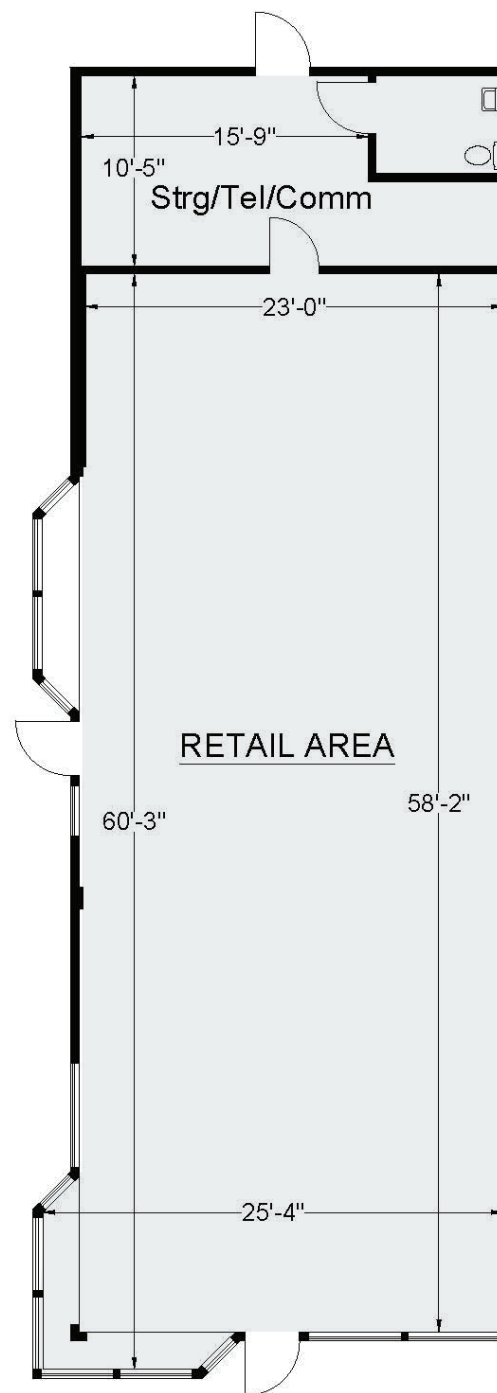
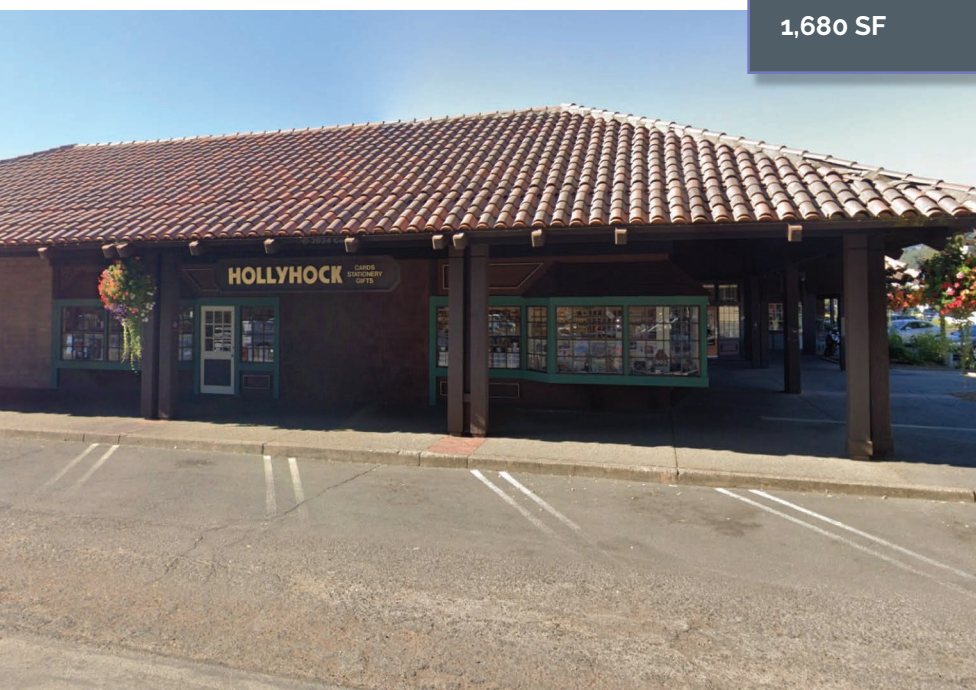
CURRENT STOREFRONT

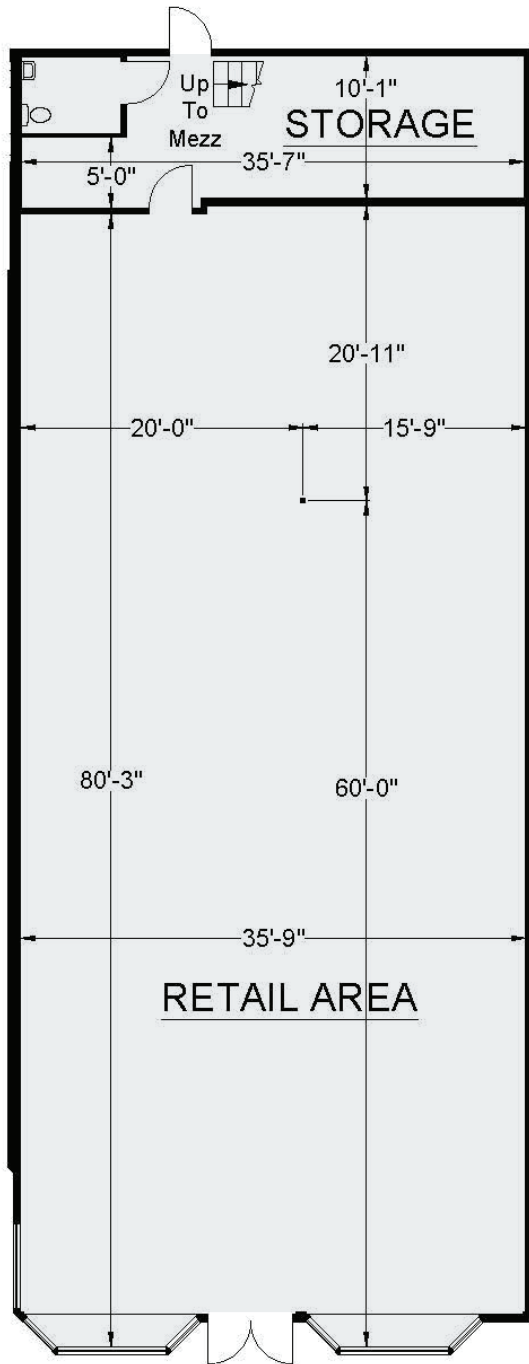
**LEASE PENDING**  
SUITE 7  
1,211 SF





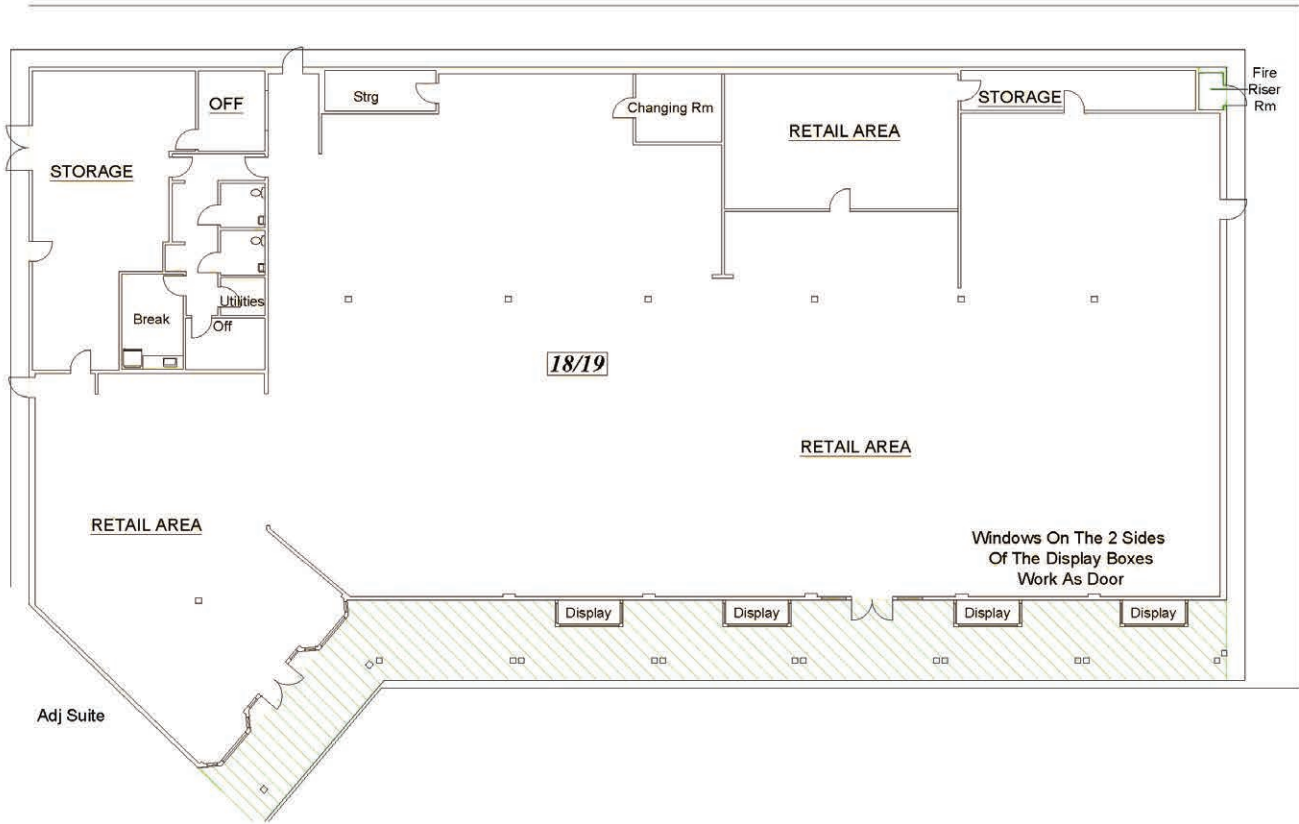
AVAILABLE  
SUITE 17  
1,680 SF





AVAILABLE  
 SUITE 14  
 3,240 SF





**AVAILABLE**  
**SUITE 18 / 19**  
**15,181 SF**





TO SANTA ROSA

spread  
*Kitchen*

FIESTA SHOPPING CENTER

BAKER & COOK

VINEYARD SHOPPING CENTER

SONOMA VALLEY FARMHOUSE

LITTLE MAYA BAKERY

MAXWELL VILLAGE

Sonoma Marketplace

THE DEPOT RESTAURANT

SONOMA VALLEY CENTER

Mamma Tanino's Ristorante

HISTORIC SONOMA PLAZA

SONOMA SUNFLOWER

THE MOON ROOM

SONOMA CHEESE FACTORY

WILLIAMS SONOMA

SONOMA VALLEY HOSPITAL

SONOMA VALLEY HEALTH CARE DISTRICT

HEALING HERE AT HOME

hopmonk  
Tavern

MacARTHUR PLACE  
SONOMA

SONOMA HIGH  
1,165 students

Jacob's  
RESTAURANT

THE LODGE  
AT SONOMA

Friedman's  
HOME IMPROVEMENT

ARTEFACT  
DESIGN & SALVAGE

TO VALLEJO / NOVATO

LOCATION MAP

# Sonoma Marketplace

PRINCIPAL TRADE AREA

# Highlights

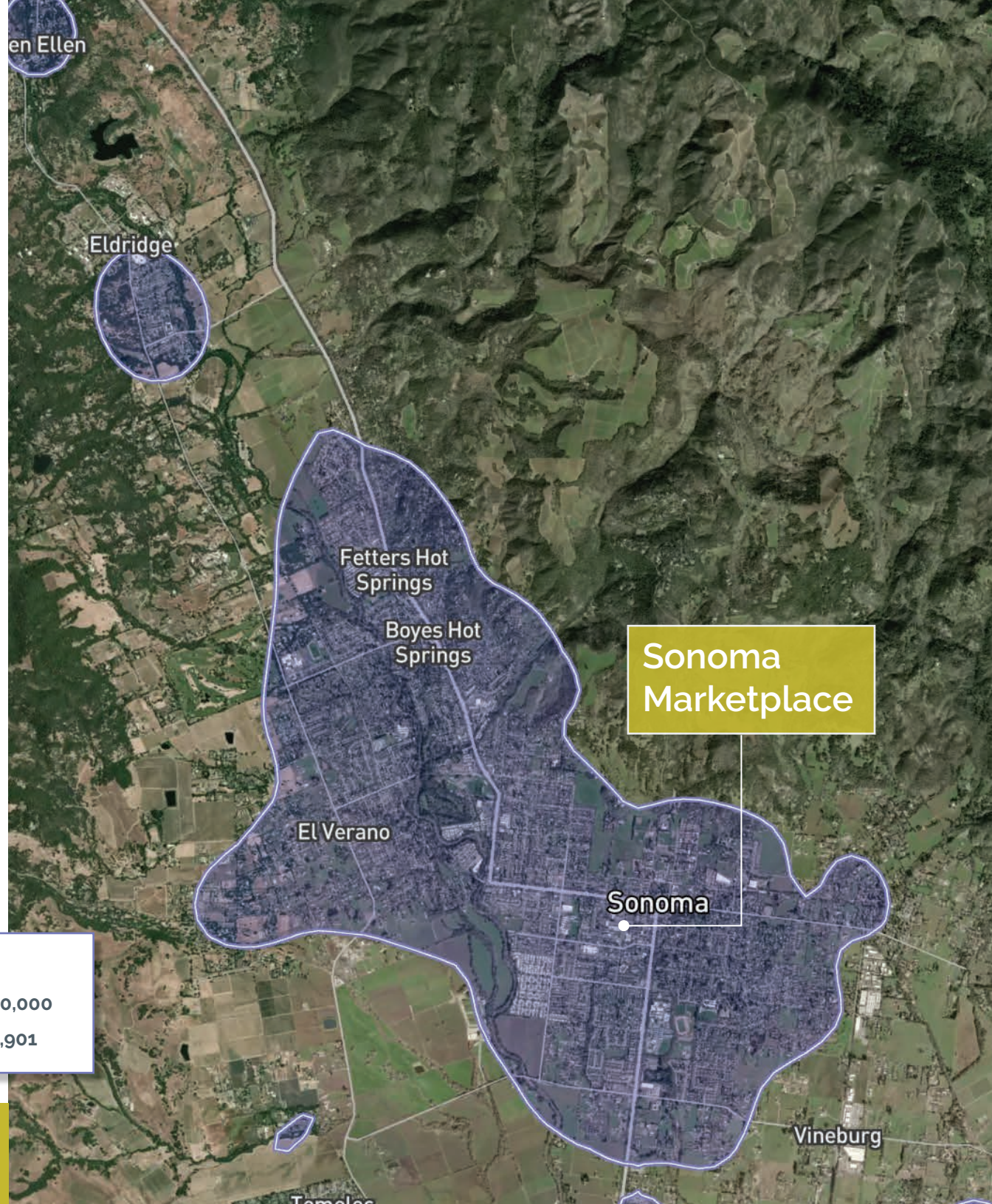
Sonoma Marketplace is the dominant community shopping center anchored by Whole Foods and CVS. Located at the intersection of Highway 12 and Second Avenue in the historic town of Sonoma, California.

- Sonoma's premier shopping center just steps from the Historic Sonoma Plaza (1 million visitors annually)
- Easily accessible from West Napa Street (16,686 cars per day)

**PRINCIPAL TRADE AREA**

**AVG. HH INCOME**      \$150,000

**POPULATION (10 MILE)**      148,901





CROSSPOINT REALTY SERVICES, INC.  
415-288-6888  
www.crosspointrealty.com

FOR INFORMATION, CONTACT:

**BRIAN ALT**  
Senior Leasing Manager  
916-200-9446  
balt@crosspointrealty.com  
CA DRE #01504949

**CARTER HEMMING**  
chemming@crosspointrealty.com  
CA DRE #01123464

**KATHY DEOCHOA**  
kdeochoa@crosspointrealty.com  
CA DRE #01871554