

**90 ADELPHIA  
ROAD**

**FARMINGDALE, NJ 07727**

**THE COMMONS AT  
YELLOWBROOK ESTATES  
BRAND NEW CONSTRUCTION**



**EXCLUSIVE  
LISTING  
ASSOCIATES:**

**Eric Starker**

*Broker of Record*

908-692-5055

[eric@starkercommercial.com](mailto:eric@starkercommercial.com)

**Susan Taylor**

*Broker Associate*

732-962-5369

[susan@starkercommercial.com](mailto:susan@starkercommercial.com)

**Michael Desero**

*Sales Associate*

908-692-9042

[mike@starkercommercial.com](mailto:mike@starkercommercial.com)

**Michael Imperato**

*Sales Associate*

908-216-3516

[mimperato@starkercommercial.com](mailto:mimperato@starkercommercial.com)



# PROPERTY HIGHLIGHTS

## PROPERTY DETAILS:

Price:	\$22.00
NNN Approx:	\$8.00
Available SF Options:	1,175 – 10,000 SF
Year Built:	Brand New Construction
Stories:	1
County:	Monmouth

## SIZE & SPACE DETAILS:

1st Floor	1,175 – 5,000 SF
-----------	------------------

- The Commons at Yellowbrook Estates is a new construction retail center located within a major development zone of Monmouth County

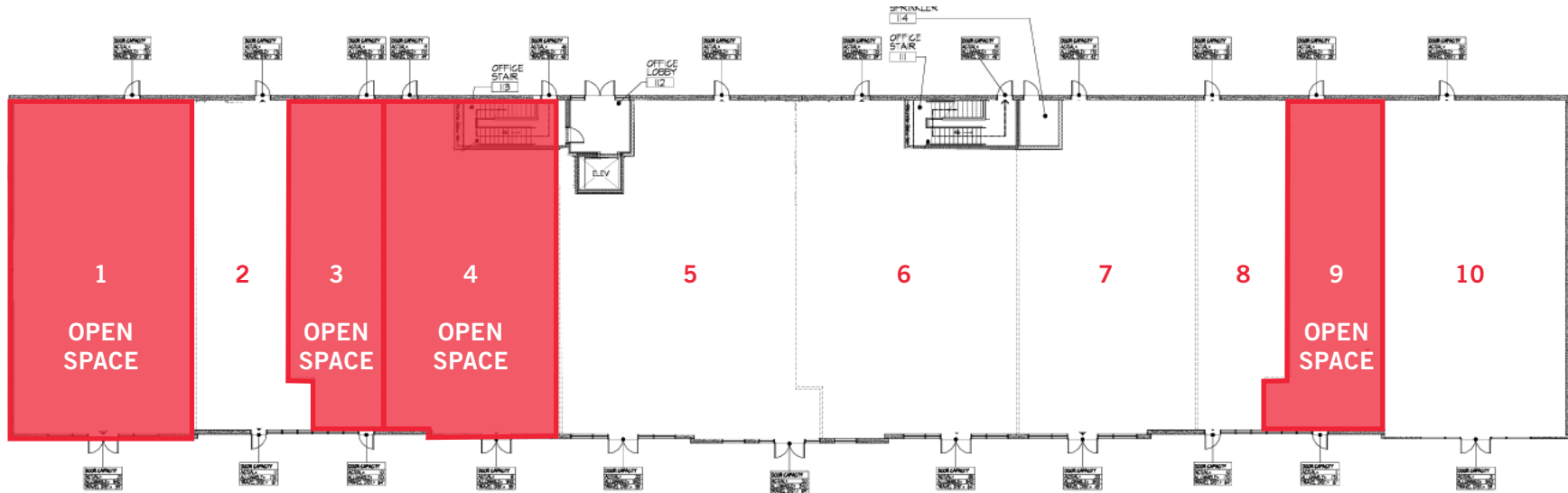
## PROPERTY ADDRESS

**90 ADELPHIA RD  
FARMINGDALE, NJ 07727**

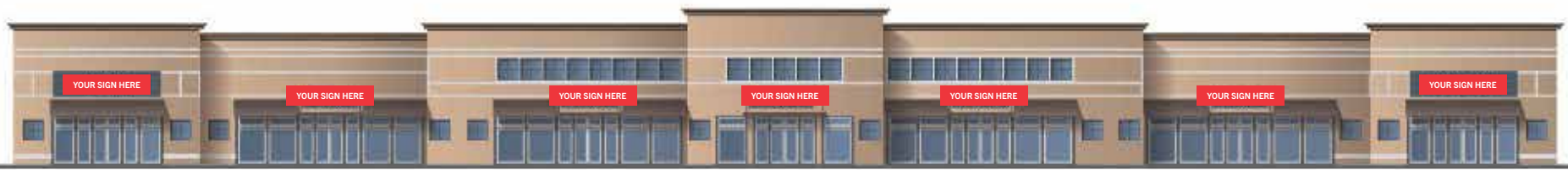


# SITE PLAN

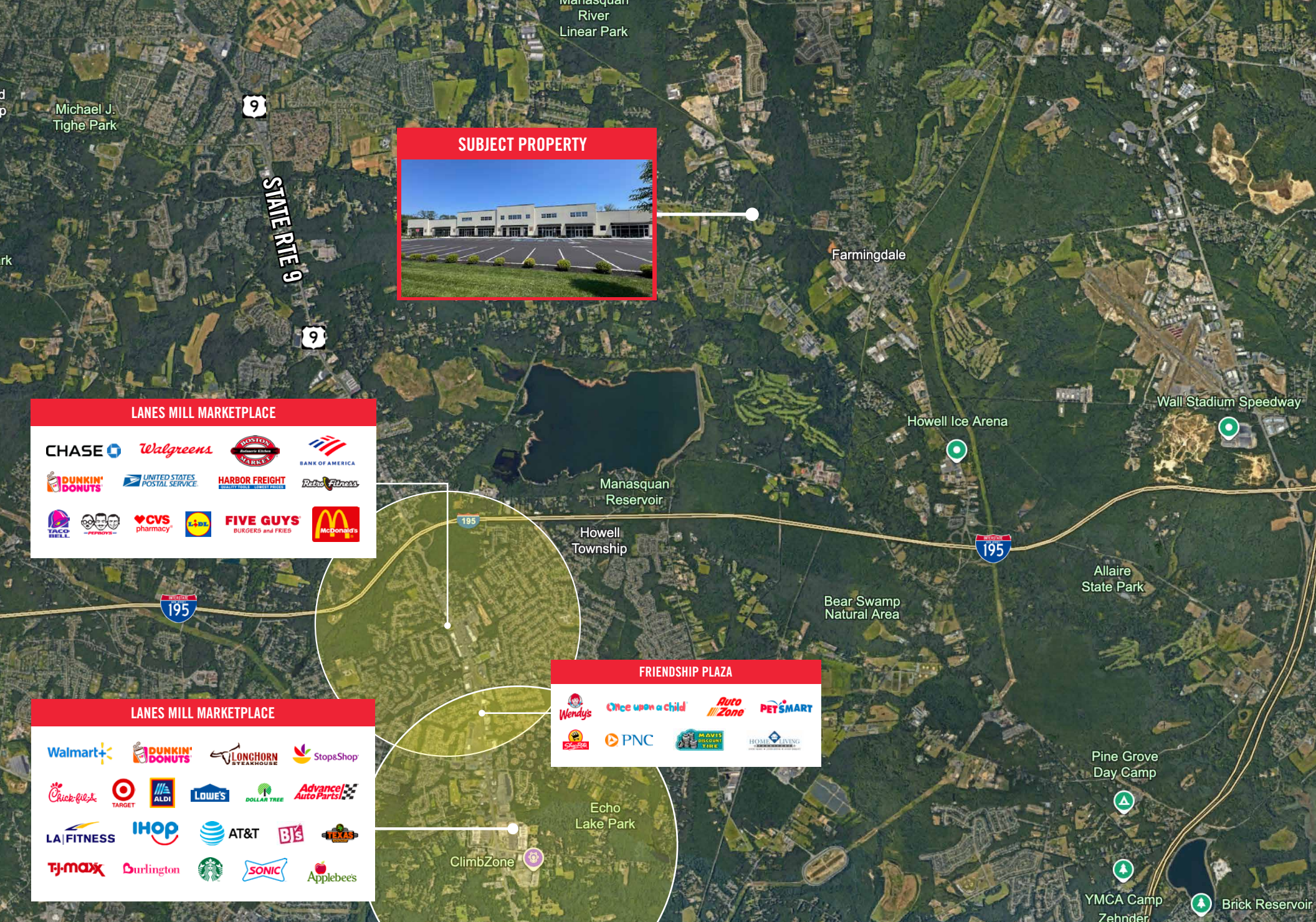
PROPERTY ADDRESS  
**90 ADELPHIA RD  
FARMINGDALE, NJ 07727**



1	OPEN SPACE	2,451 SF	6	SWING LAB GOLF	3,186 SF
2	DOMINOS PIZZA	1,175 SF	7	SPORTS BAR	1,849 SF
3	OPEN SPACE	1,175 SF	8	SPORTS BAR	1,175 SF
4	OPEN SPACE	2,194 SF	9	OPEN SPACE	1,275 SF
5	SWING LAB GOLF	3,009 SF	10	EZE FIT GYM	2,451 SF









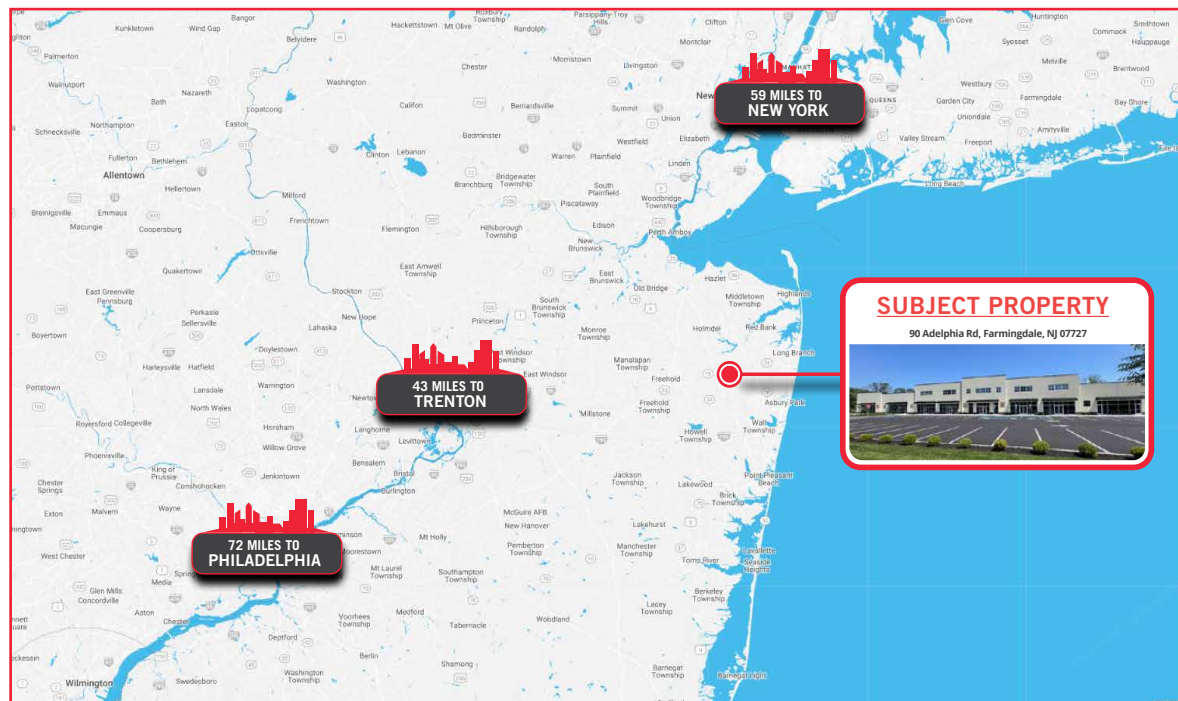
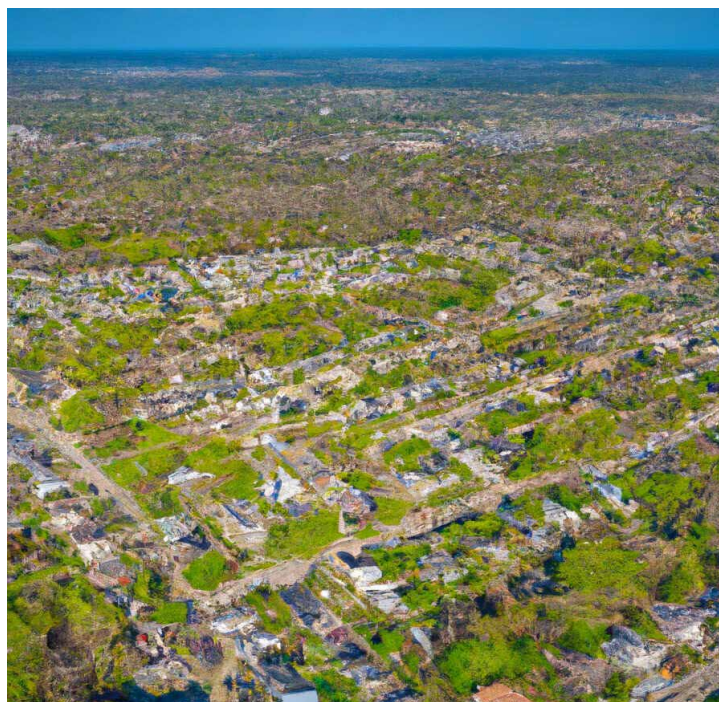
# AREA OVERVIEW

90 ADELPHIA RD, FARMINGDALE, NJ 07727

Farmingdale, NJ, offers a promising market outlook driven by several key factors that position the area for continued growth. Located in the heart of Monmouth County, Farmingdale benefits from its proximity to major transportation routes like Route 33 and the Garden State Parkway, making it an attractive location for businesses and residents alike.

The local real estate market is experiencing steady appreciation, with demand for both residential and commercial properties on the rise. Farmingdale's small-town charm, combined with access to nearby urban centers, makes it an appealing option for families and professionals seeking a balance between suburban living and convenience.

As the market continues to evolve, Farmingdale is positioned to benefit from regional development trends, making it an attractive option for investors and homebuyers looking for stability and long-term potential.



# — CONTACT LEAD AGENTS FOR MORE DETAILS

90 ADELPHIA RD, FARMINGDALE, NJ 07727



**Eric Starker**

*Broker of Record*

908-692-5055

[eric@starkercommercial.com](mailto:eric@starkercommercial.com)

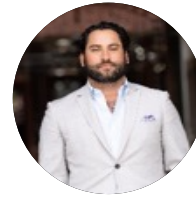


**Susan Taylor**

*Broker Associate*

732-962-5369

[susan@starkercommercial.com](mailto:susan@starkercommercial.com)



**Michael Desero**

*Sales Associate*

908-692-9042

[mike@starkercommercial.com](mailto:mike@starkercommercial.com)



**Michael Imperato**

*Sales Associate*

908-216-3516

[mimperato@starkercommercial.com](mailto:mimperato@starkercommercial.com)





## NON-ENDORSEMENT AND DISCLAIMER NOTICE NON-ENDORSEMENTS

Starker Commercial Realty LLC is not affiliated with, sponsored by, or endorsed by any commercial tenant or lessee identified in this marketing package. The presence of any corporation's logo or name is not intended to indicate or imply affiliation with, or sponsorship or endorsement by, said corporation of Starker Commercial Realty LLC, its affiliates or subsidiaries, or any agent, product, service, or commercial listing of Starker Commercial Realty LLC, and is solely included for the purpose of providing tenant lessee information about this listing to prospective customers.

**ALL PROPERTY SHOWINGS ARE BY APPOINTMENT ONLY. PLEASE CONSULT YOUR STARKER COMMERCIAL REALTY LLC AGENT FOR MORE DETAILS.**

## DISCLAIMER

The information contained in this Marketing Brochure has been obtained from sources we believe to be reliable; however, Starker Commercial Realty LLC has not verified, and will not verify, any of the information contained herein, nor has Starker Commercial Realty LLC conducted any investigation regarding these matters and makes no warranty or representation whatsoever regarding the accuracy or completeness of the information provided. All individuals, parties, and/or entities are encouraged to verify all information and to conduct their own research and/or inspections including through appropriate third-party independent professionals selected by such party. Questions regarding the condition of the property and whether the property complies with applicable governmental requirements should be discussed by the party with the following, but not limited to; appropriate engineers, architects, contractors, other consultants and governmental agencies.

© 2024 Starker Commercial Realty LLC. All rights reserved.



**90 ADELPHIA  
ROAD**  
**FARMINGDALE, NJ 07727**



**Starker Commercial Realty LLC**

195 U.S. 9 #204A

Manalapan Township, NJ 07726

732-972-2937

[eric@starkercommercial.com](mailto:eric@starkercommercial.com)