

**SUBLEASE**  
UP TO 111,940 SF AVAILABLE



# 5301 HEADQUARTERS



**SUBLEASE**  
UP TO 111,940 SF AVAILABLE

**5301**  
**HEADQUARTERS**

# SUBLEASE HIGHLIGHTS

Up to 111,940 square feet of contiguous sublease space available with potential signage opportunities.



**2,894 SF & 6,104 SF**  
FIRST FLOOR SPEC SUITE OPPORTUNITIES

*\*Up to 8,998 SF Contiguous*

**51,471 SF**  
SECOND FLOOR

*\*Divisible by 25,000 SF*

**51,471 SF**  
THIRD FLOOR

*\*Divisible by 20,000 SF*



**\$33.00 NNN**  
QUOTED RATE

**FULL T.I. ALLOWANCE**  
AVAILABLE



**AVAILABLE IMMEDIATELY**  
TERM THROUGH FEB 2034



**5.0/1,000 SF**  
STRUCTURED PARKING



CONFERENCE ROOM



RESTROOMS



BREAKROOM



WORKSTATIONS



**SUBLEASE**  
UP TO 111,940 SF AVAILABLE

**5301**  
**HEADQUARTERS**

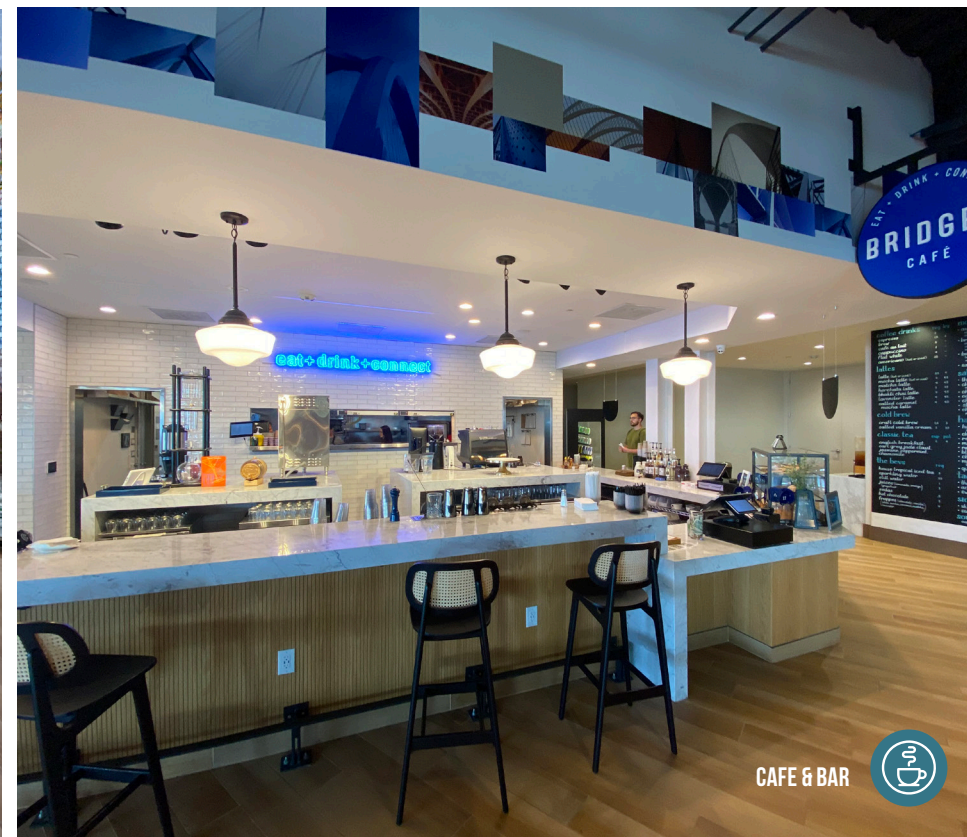
# PROPERTY HIGHLIGHTS

Located in Plano's Legacy Business Park, 5301 Headquarters offers a modern office environment utilizing state-of-the-art technology, timeless design features and collaborative gathering spaces.

- 248,661 RSF BUILDING TOTAL
- BUILT IN 2021
- MODERN LOBBY
- TENANT CAFÉ AND BAR
- FULLY EQUIPPED FITNESS CENTER WITH PELOTON STATIONS & LOCKER ROOM
- TENANT LOUNGE & BILLIARDS DEN
- OUTDOOR PATIO



MODERN LOBBY



CAFE & BAR



OUTDOOR PATIO



TENANT LOUNGE



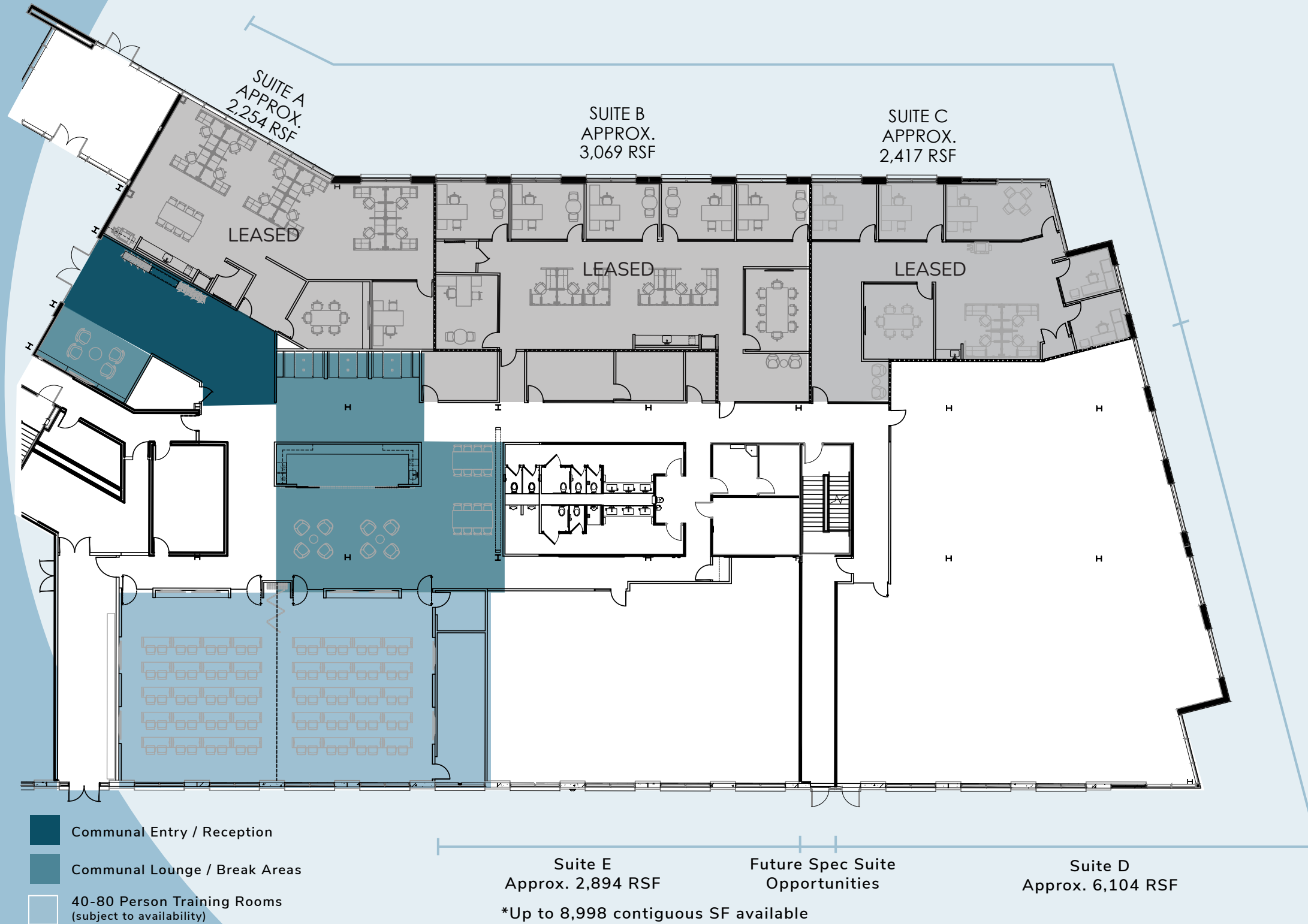
# FLOORPLAN

## 2,894 SF - 6,104 SF

FIRST FLOOR  
SPEC SUITE OPPORTUNITIES

**SUBLEASE**  
UP TO 111,940 SF AVAILABLE

**5301**  
**HEADQUARTERS**

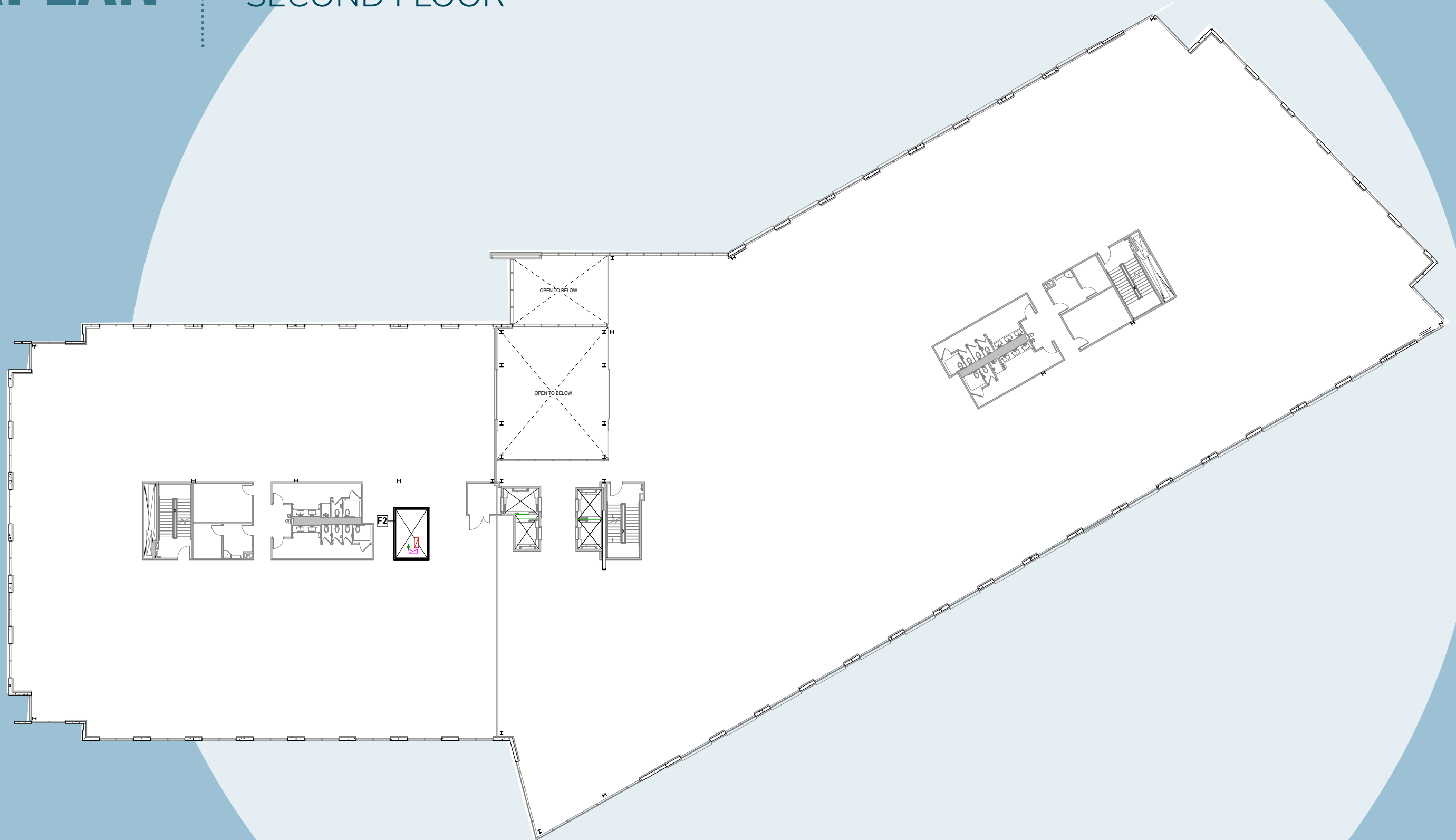


# FLOORPLAN

51,471 SF  
SECOND FLOOR

SUBLEASE  
UP TO 111,940 SF AVAILABLE

5301  
HEADQUARTERS



# FLOORPLAN

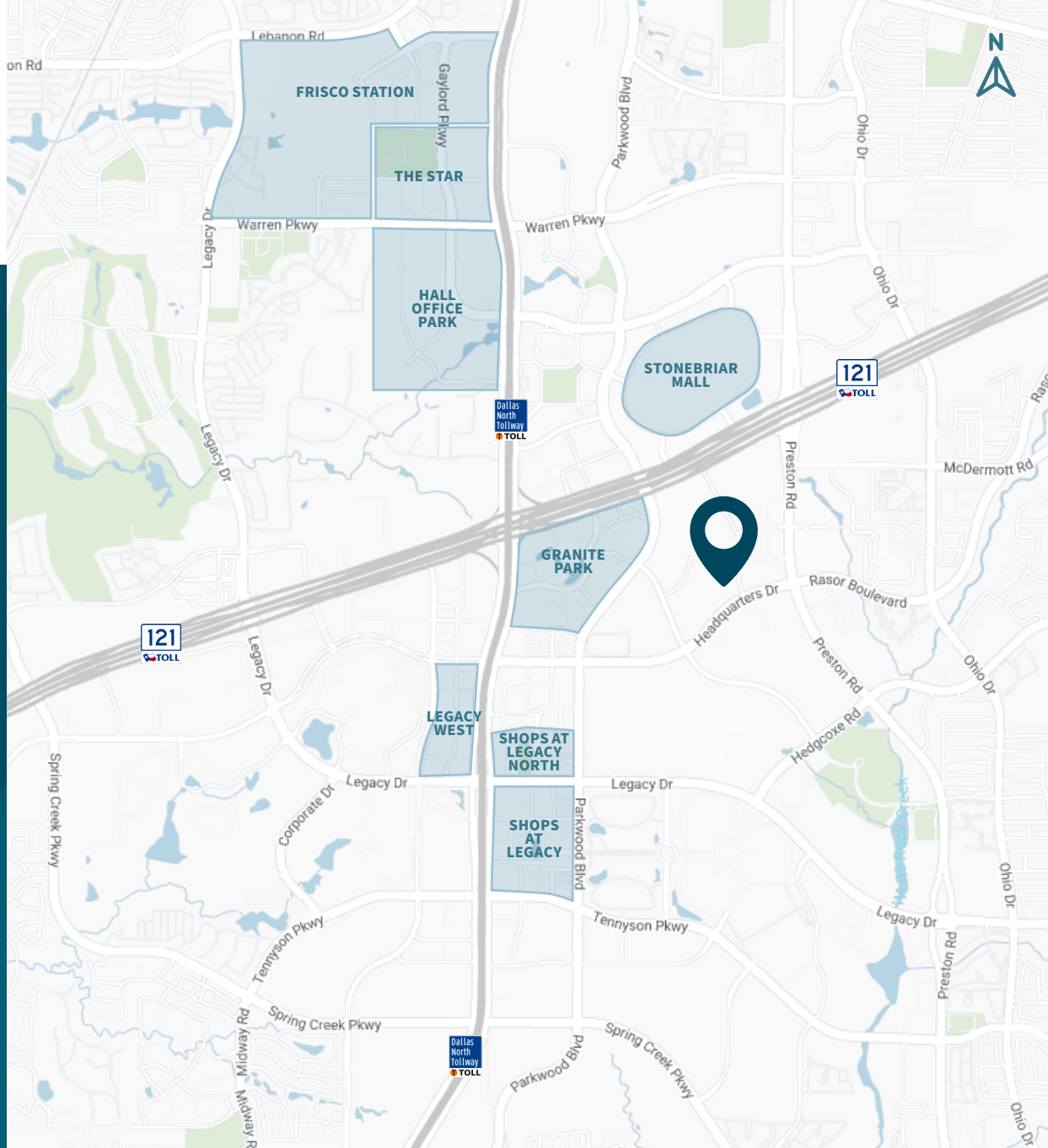
51,471 SF  
THIRD FLOOR

SUBLEASE  
UP TO 111,940 SF AVAILABLE

5301  
HEADQUARTERS



- 225 Workstations
- 23 Dedicated Offices
- 10 Flexible Huddle Rooms or Offices
- 10 Conference Rooms



Convenient access to major roads such as the Dallas North and Sam Rayburn Tollways, and to entertainment destinations such as The Shops at Legacy, Legacy West and Stonebriar Centre.



Property Address

**5301 HEADQUARTERS DRIVE  
PLANO, TEXAS 75024**

For more information, contact:

**CRAIG WILSON**  
214.560.2994  
craig.wilson@streamrealty.com

**RYAN EVANICH**  
214.267.0422  
revanich@streamrealty.com

**WILLS BAUER**  
214.560.2993  
wills.bauer@streamrealty.com

