



INTEGRUS

DEVELOPMENT

NEC of Wolf St. & 159th St.
Orland Park, Illinois 60467



INTEGRUS

DEVELOPMENT

NEC of Wolf St. & 159th St.
Orland Park, Illinois 60467



INTEGRUS

DEVELOPMENT

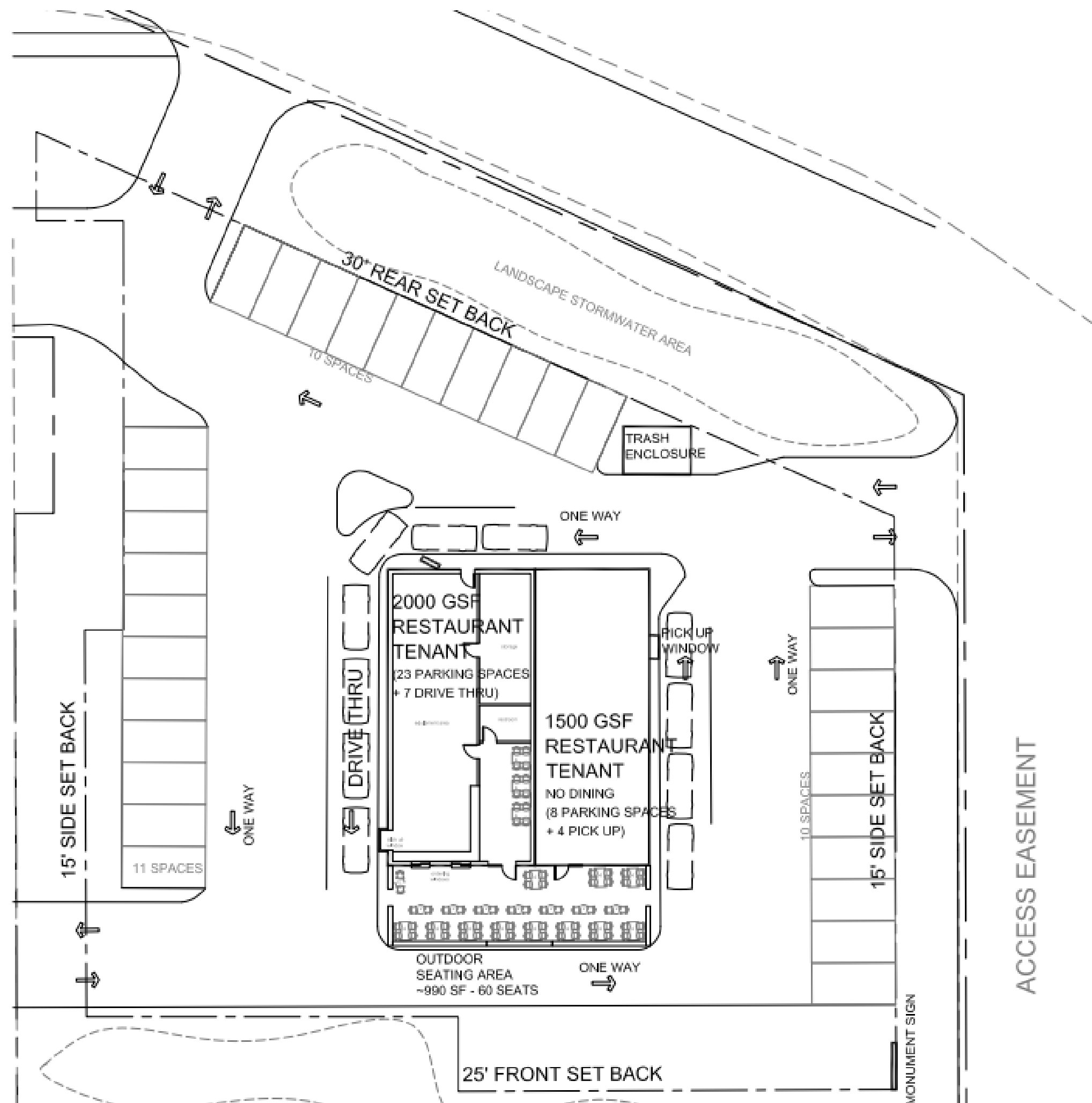
NEC of Wolf St. & 159th St.
Orland Park, Illinois 60467



INTEGRUS

DEVELOPMENT

NEC of Wolf St. & 159th St.
Orland Park, Illinois 60467





INTEGRUS

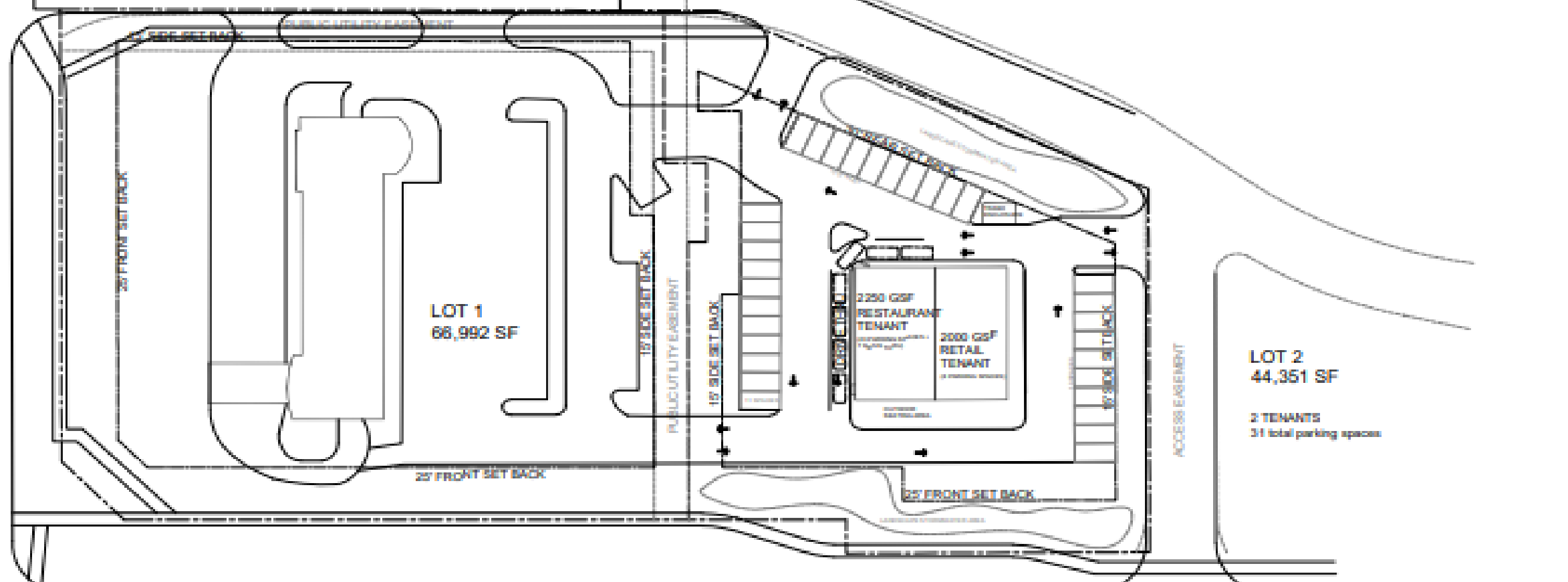
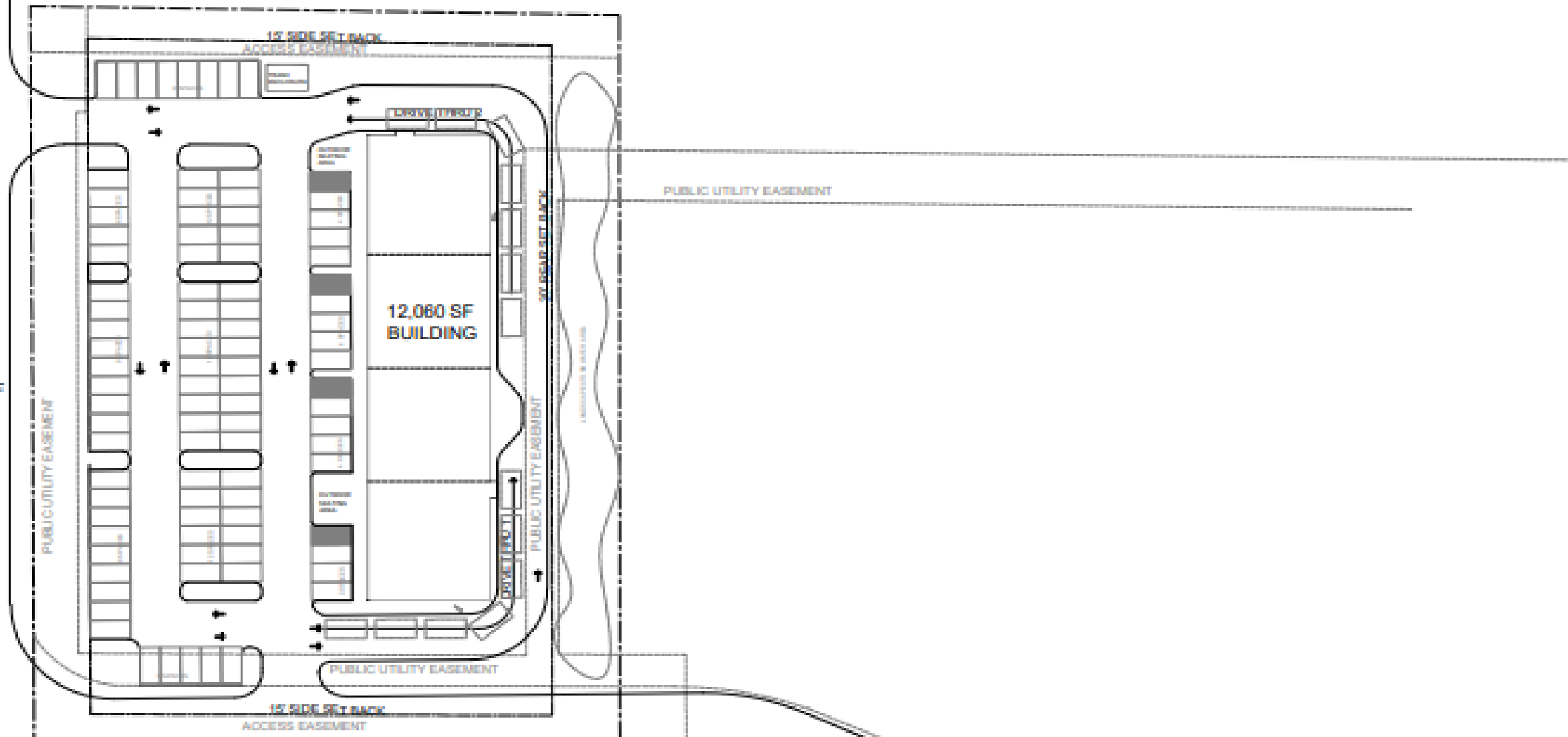
DEVELOPMENT

NEC of Wolf St. & 159th St.
Orland Park, Illinois 60467

WOLF ROAD

NORTH LOT
91,794 SF

88 total
parking
spaces



159th STREET



INTEGRUS

DEVELOPMENT

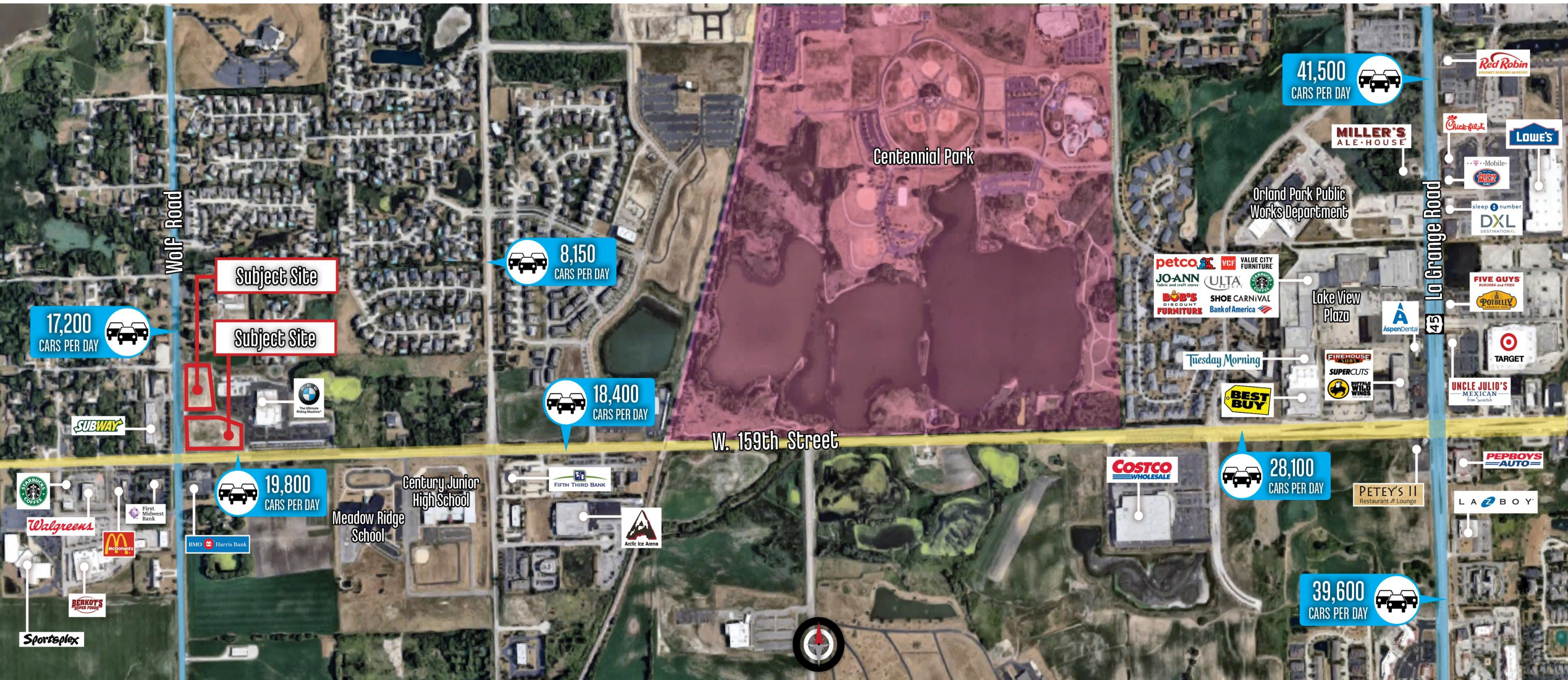
NEC of Wolf St. & 159th St.
Orland Park, Illinois 60467



INTEGRUS

DEVELOPMENT

NEC of Wolf St. & 159th St.
Orland Park, Illinois 60467





	1 mile	3 miles	5 miles
Population			
2000 Population	3,090	48,749	133,173
2010 Population	3,803	55,695	147,129
2017 Population	4,307	57,083	149,237
2022 Population	4,471	58,022	150,891
2000-2010 Annual Rate	2.10%	1.34%	1.00%
2010-2017 Annual Rate	1.73%	0.34%	0.20%
2017-2022 Annual Rate	0.75%	0.33%	0.22%
2017 Male Population	47.6%	48.2%	48.5%
2017 Female Population	52.4%	51.8%	51.5%
2017 Median Age	46.5	43.4	43.7

In the identified area, the current year population is 149,237. In 2010, the Census count in the area was 147,129. The rate of change since 2010 was 0.20% annually. The five-year projection for the population in the area is 150,891 representing a change of 0.22% annually from 2017 to 2022. Currently, the population is 48.5% male and 51.5% female.

Median Age

The median age in this area is 46.5, compared to U.S. median age of 38.2.

Race and Ethnicity

2017 White Alone	87.1%	88.2%	90.1%
2017 Black Alone	2.5%	2.1%	1.6%
2017 American Indian/Alaska Native Alone	0.0%	0.1%	0.1%
2017 Asian Alone	6.9%	5.6%	4.8%
2017 Pacific Islander Alone	0.0%	0.0%	0.0%
2017 Other Race	1.4%	2.2%	1.8%
2017 Two or More Races	2.0%	1.8%	1.6%
2017 Hispanic Origin (Any Race)	5.4%	7.9%	7.3%

Persons of Hispanic origin represent 7.3% of the population in the identified area compared to 18.1% of the U.S. population. Persons of Hispanic Origin may be of any race. The Diversity Index, which measures the probability that two people from the same area will be from different race/ethnic groups, is 29.6 in the identified area, compared to 64.0 for the U.S. as a whole.

Households

2000 Households	945	16,503	45,071
2010 Households	1,245	19,773	52,845
2017 Total Households	1,446	20,373	53,850
2022 Total Households	1,506	20,725	54,481
2000-2010 Annual Rate	2.80%	1.82%	1.60%
2010-2017 Annual Rate	2.09%	0.41%	0.26%
2017-2022 Annual Rate	0.82%	0.34%	0.23%
2017 Average Household Size	2.89	2.79	2.76

The household count in this area has changed from 52,845 in 2010 to 53,850 in the current year, a change of 0.26% annually. The five-year projection of households is 54,481, a change of 0.23% annually from the current year total. Average household size is currently 2.76, compared to 2.77 in the year 2010. The number of families in the current year is 40,871 in the specified area.

