

12100 INKSTER ROAD

REDFORD TOWNSHIP, MI

AVAILABLE FOR SUBLEASE



NEWMARK

TOM OLDHAM

Senior Managing Director

248-357-6595

Tom.Oldham@nmrk.com



PROPERTY HIGHLIGHTS

- 70,000 SF up to 138,912 SF
- \$7.50/SF NNN
- Up to 28' 10" CLEAR
- (5) 9'x10 truck wells with levelers and seals (more possible)
- 2000 amps, 480 volt electrical service
- ±450 parking spaces
- Within half mile of I-96 exit and Wonderland Village shopping & restaurants
- Warehouse with new paint and lights
- Renovated entrance and parking lot
- New secured/screened storage area



SITE

Existing Building,
138,912 SF
±11.68 Acres

466'

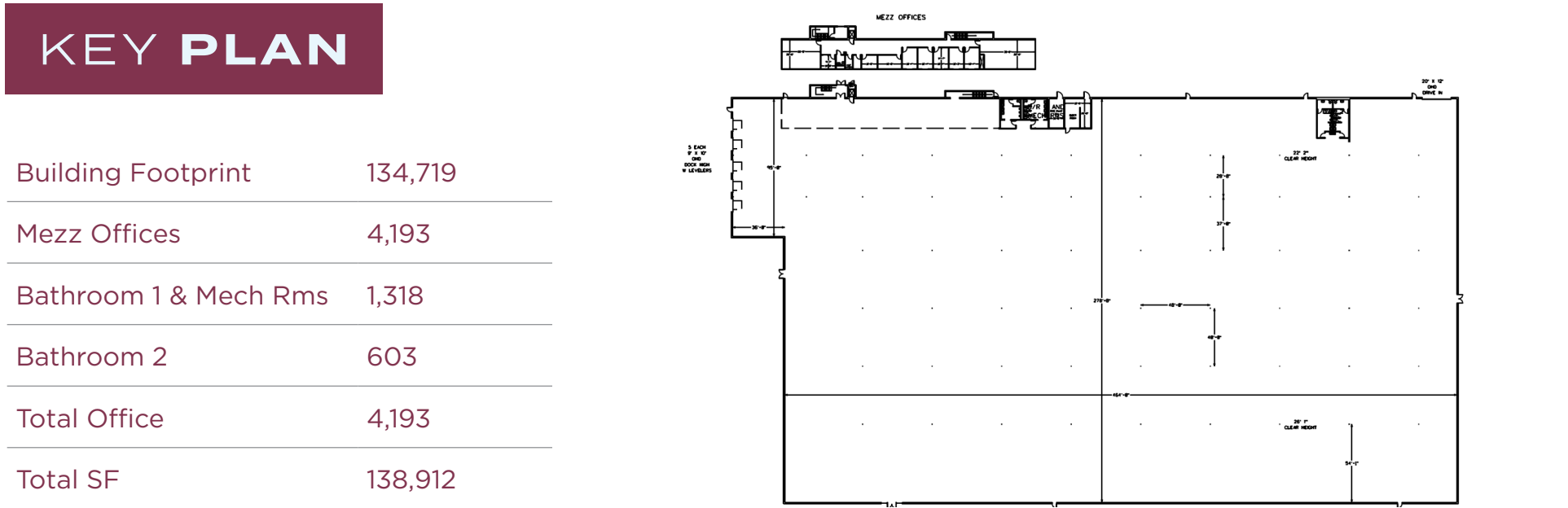
280'

± 450 Parking Spaces

Loading Docks (5)

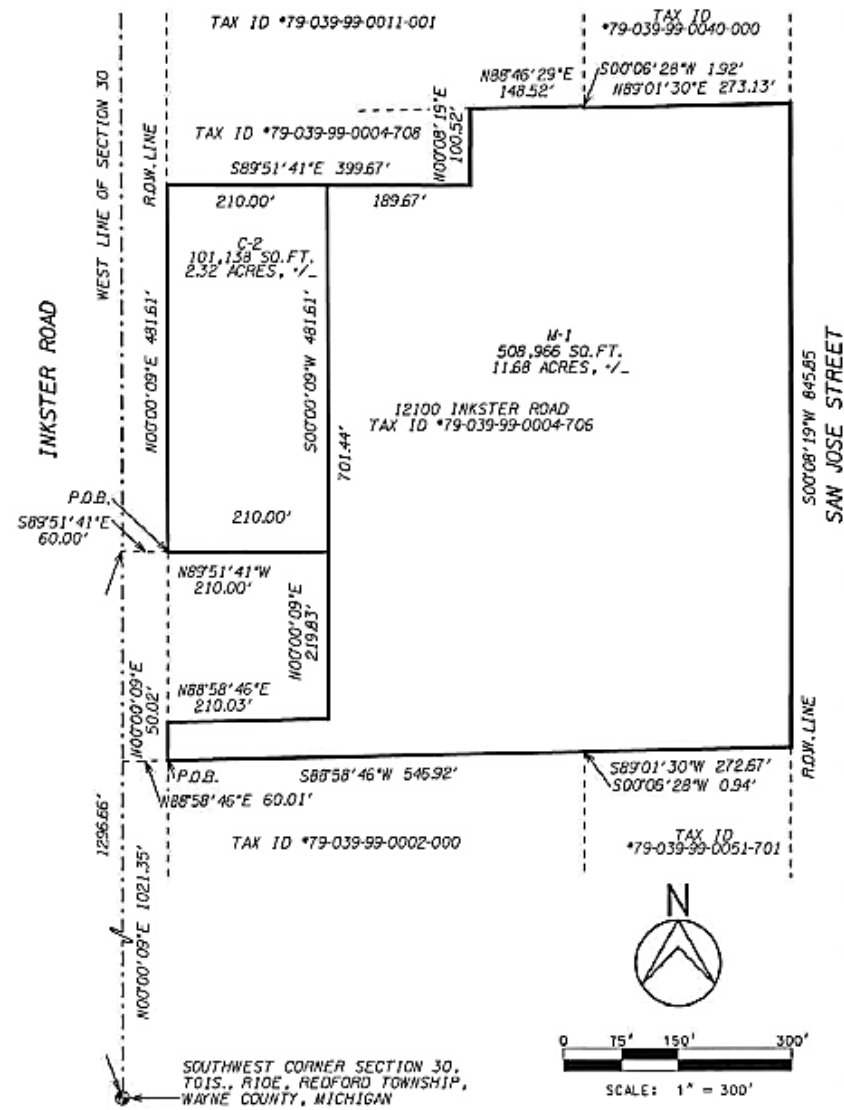
KEY PLAN

Building Footprint	134,719
Mezz Offices	4,193
Bathroom 1 & Mech Rms	1,318
Bathroom 2	603
Total Office	4,193
Total SF	138,912

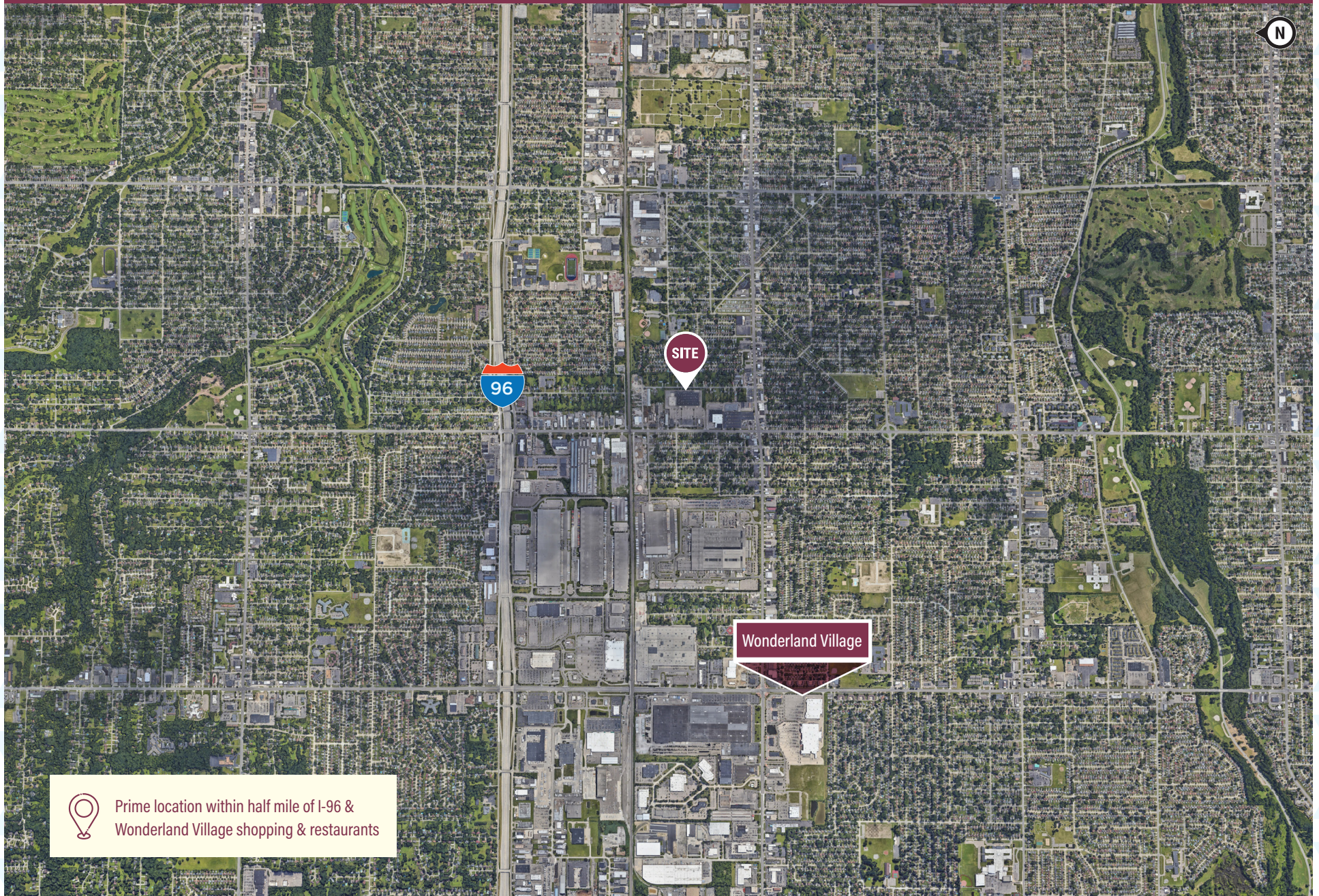


12100 **INKSTER ROAD**

FLOOR PLAN



AMENITIES & ACCESS



Prime location within half mile of I-96 & Wonderland Village shopping & restaurants

12100 **INKSTER ROAD**



12100 INKSTER ROAD

REDFORD TOWNSHIP, MI

FOR MORE INFORMATION CONTACT:

TOM OLDHAM

Senior Managing Director

248-357-6595

Tom.Oldham@nmrk.com

NEWMARK

The information contained herein has been obtained from sources deemed reliable but has not been verified and no guarantee, warranty or representation, either express or implied, is made with respect to such information. Terms of sale or lease and availability are subject to change or withdrawal without notice.