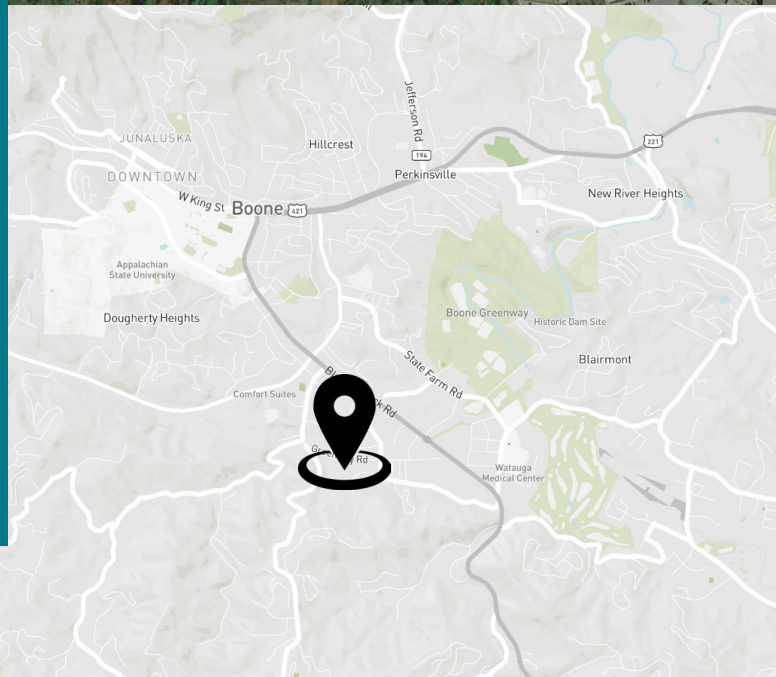


736
Greenway Rd
Boone, NC 28607

±16 acres
Available for sale

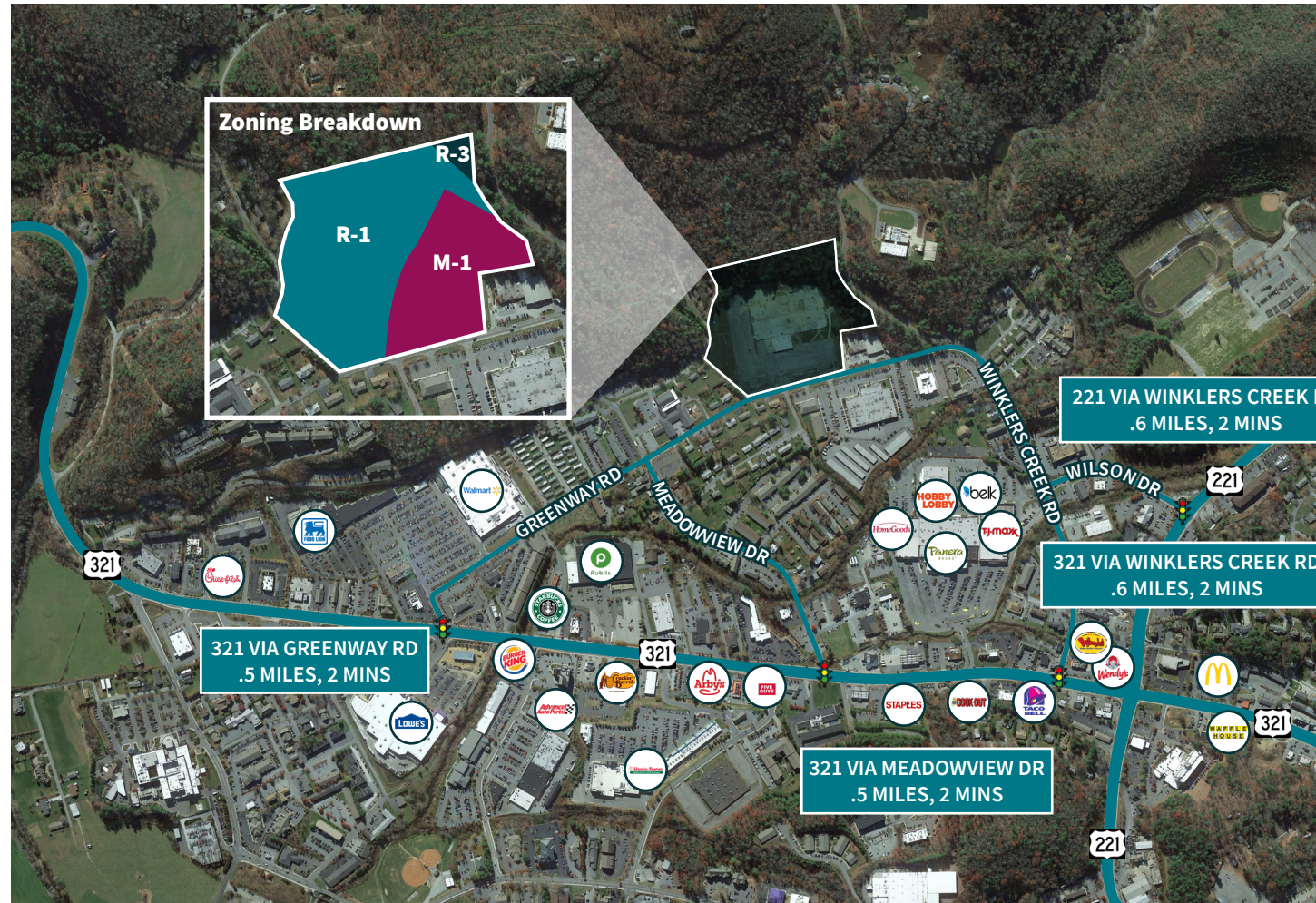


John Cashion, SIOR
+1 704 804 5780
john.cashion@jll.com

Matthew Greer, CCIM, SIOR
+1 704 804 5762
matthew.greer@jll.com



Land Specifications



Total Acres ±16.64 Acres

Acres Graded ±11 Acres

Zoning (M-1) Light Industrial and (R-1 & R-3) Residential

County Watagua County

Parcel ID 2910-21-9291-000

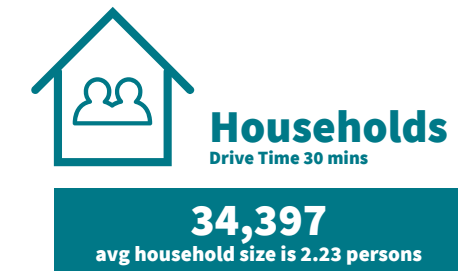
Environmental Site has received Letter of Eligibility to NC Brownfields Program
Qualified buyers to be provided with updated summary letter detailing finalizing Certification

Utilities Former manufacturing plant was served by all major utilities

Asking Price Call for offers

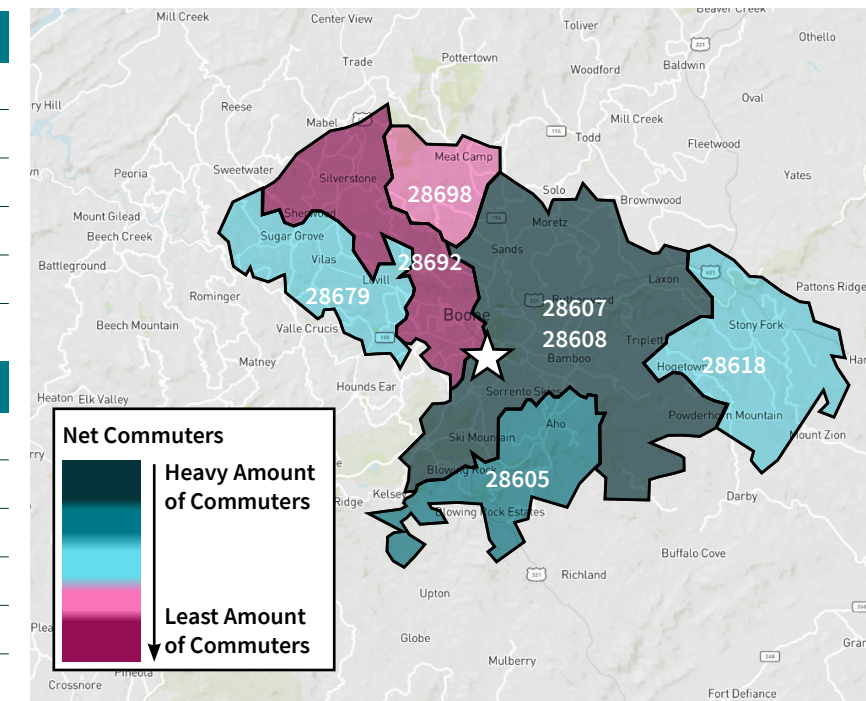


Boone, NC



Where Talent Works		
Zip	Name	2021 Employment
28607	Boone, NC	16,777
28608	Boone, NC	5,737
28605	Blowing Rock, NC	3,090
28692	Vilas, NC	970
28679	Sugar Grove, NC	646

Where Talent Lives		
Zip	Name	2021 Workers
28607	Boone, NC	13,436
28692	Vilas, NC	2,243
28605	Blowing Rock, NC	1,767
28698	Zionville, NC	1,240
28679	Sugar Grove, NC	1,051



EXPLORE
boone
Click Here to
learn more about Boone!

Named for legendary explorer, Daniel Boone, Boone, North Carolina retains the pioneer spirit, despite having grown into a busy college town, the home of Appalachian State University. The surrounding area is one of the country's best destinations for outdoor adventures. Walk across the Mile High Swinging Bridge to Grandfather Mountain's Linville Peak, the highest point in the Blue Ridge Mountains, or grab your bike and head to Pisgah National Forest, featuring over 200 miles of exciting trails.

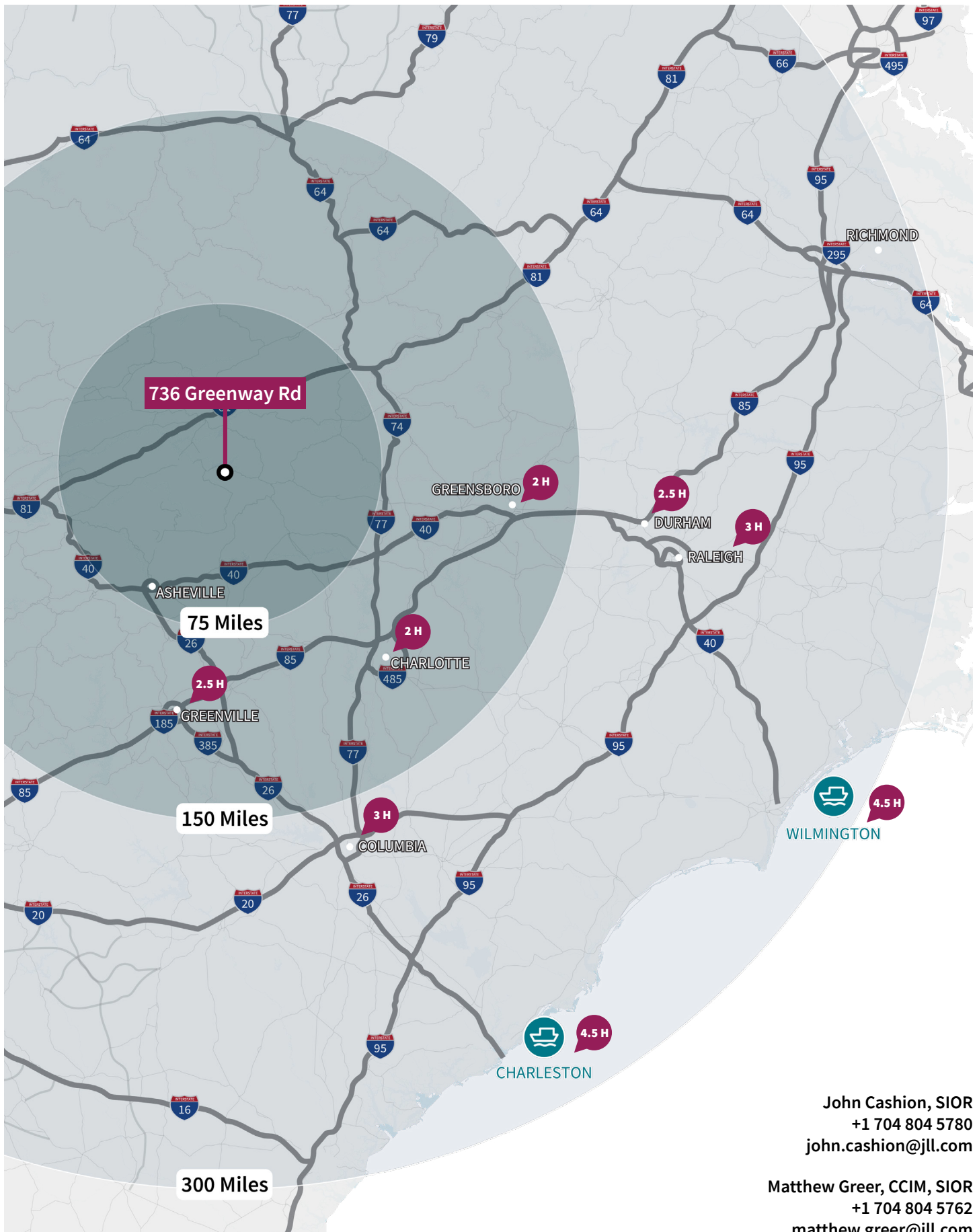
Brownfields Program

The program has worked with developers to transform idle or abandoned properties into thriving businesses & residences

This site was accepted into the North Carolina Brownfields Program; designed to incentivize & legally protect the developer who purchases the property. Among these incentives is a 50% reduction in property tax over a 5-year period, providing substantial cost saving for capital improvements.



SouthEast Access



John Cashion, SIOR
+1 704 804 5780
john.cashion@jll.com

Matthew Greer, CCIM, SIOR
+1 704 804 5762
matthew.greer@jll.com