

# MOVE IN READY OFFICES

FOR LEASE IN WEST HOLLYWOOD

1017 N. LA CIENEGA BLVD  
WEST HOLLYWOOD, CA 90069

בסייד

**Adam Funk**

310.666.0124

[afunk@cagre.com](mailto:afunk@cagre.com)

Lic. 02129715



## SPACE INFORMATION



HALLWAY



LOBBY

These materials are based on information and content provided by others, which we believe are accurate. No guarantee, warranty or representation is made by Commercial Asset Group, Inc. or its personnel. All interested parties must independently verify accuracy and completeness. As well, any projections, assumptions, opinion, or estimates are used for example only and do not represent the current or future performance of the identified property. Your tax, financial, legal and toxic substance advisors should conduct a careful investigation of the property and its suitability for your needs, including land use limitations. The property is subject to prior lease, sale, change in price, or withdrawal from the market without notice.

### SPACE SIZE

SUITE 200:  $\pm 2,627$  RSF

SUITE 300\*:  $\pm 2,644$  RSF

SUITE 320\*:  $\pm 2,555$  RSF

(\*CAN BE COMBINED FOR  $\pm 5,119$  RSF)

### RENTAL RATE

\$3.00 PSF/MO

NET OF ELECTRIC

### TERM

NEGOTIABLE

### PARKING

2.5/1,000 SF

\$125/SPACE/MONTH

### AVAILABILITY

IMMEDIATELY

- Move-in ready 2,627 RSF space available
- Full floor - remodeled building exterior/interior and building systems, operable windows throughout
- Highly visible location at La Cienega Blvd and Santa Monica Blvd
- Prime WeHo location, walking distance to endless restaurants and retail amenities
- Long term ownership, well-managed property
- Onsite parking facilities include gated on-grade garage and a surface lot adjacent to the building



## NEARBY AMENITIES



1-OAK  
ONE OF A KIND  
LOS ANGELES

THE  
WEST HOLLYWOOD  
EDITION®

THE  
ROXY  
THEATRE

  
SOHO HOUSE  
WEST HOLLYWOOD

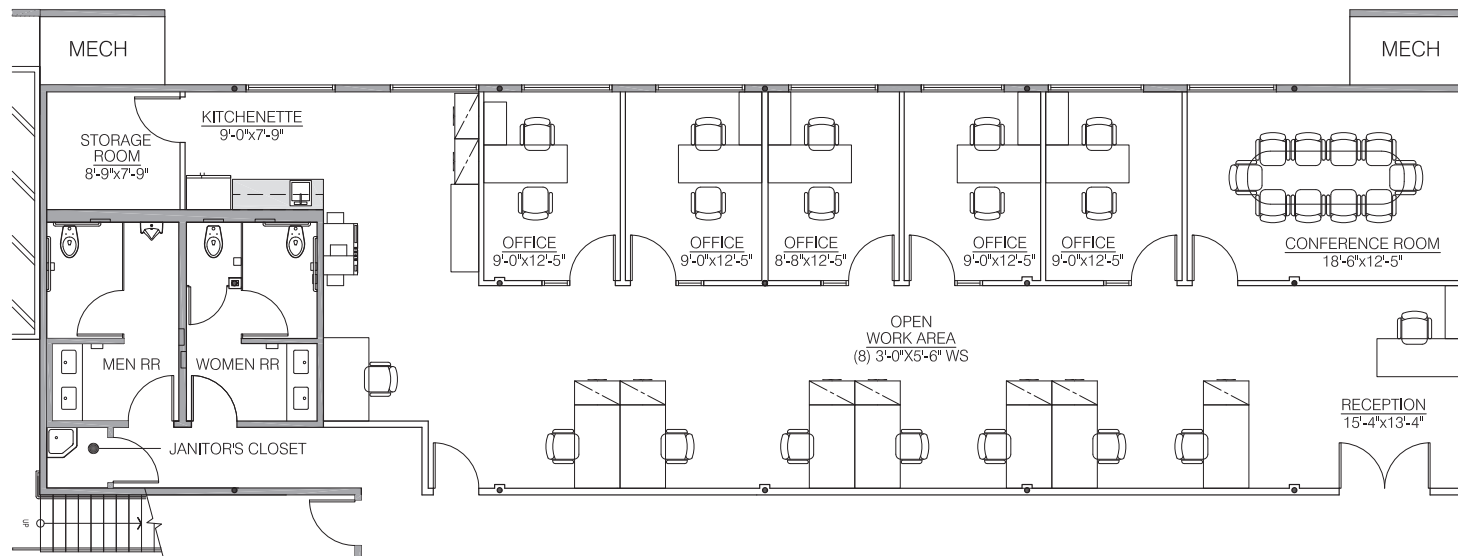
THE  
L O N D O N  
WEST HOLLYWOOD

 *Whisky a Go Go*  
HOLLYWOOD, CA

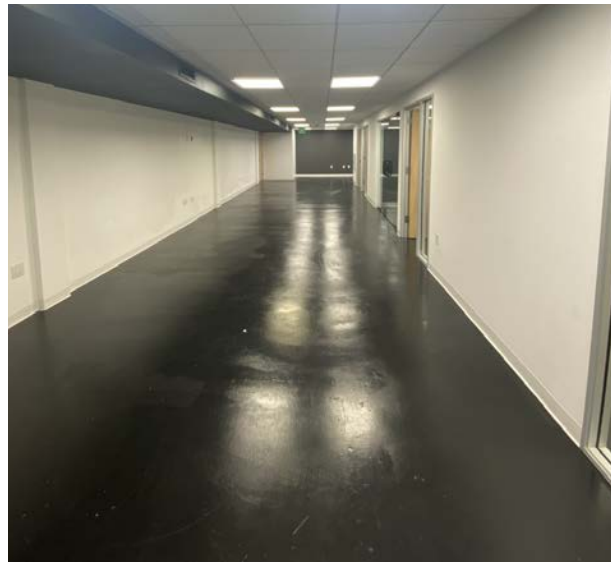
1017 N. LA CIENEGA BLVD, WEST HOLLYWOOD, CA 90069



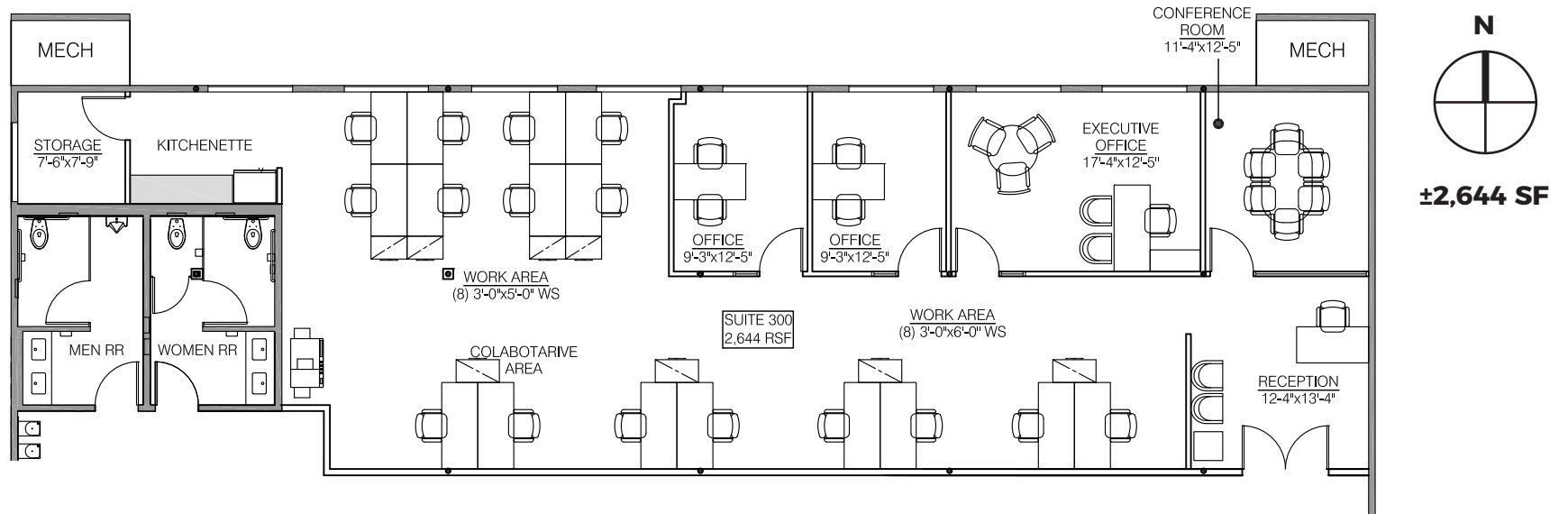
# SUITE 200



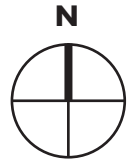
**±2,627 RSF**



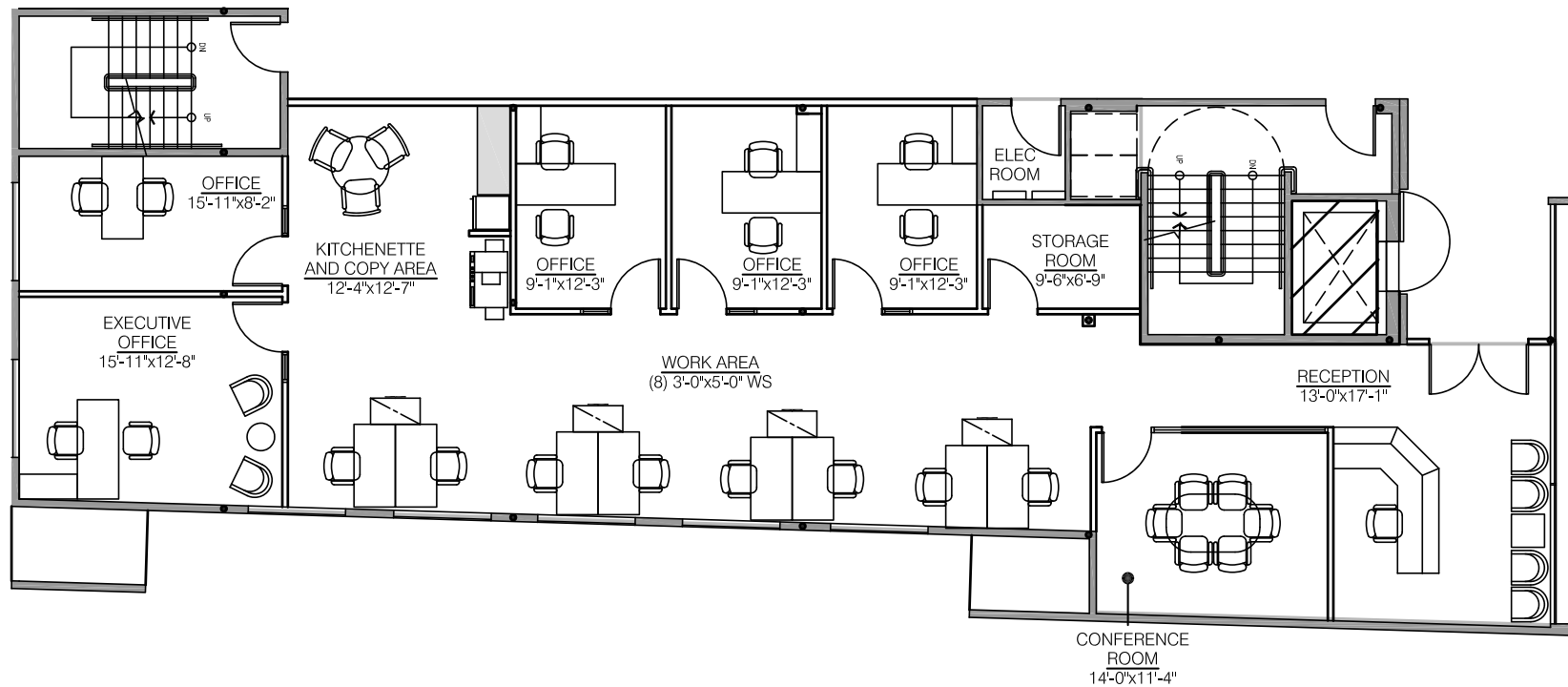
# SUITE 300



# SUITE 320



±2,555 SF

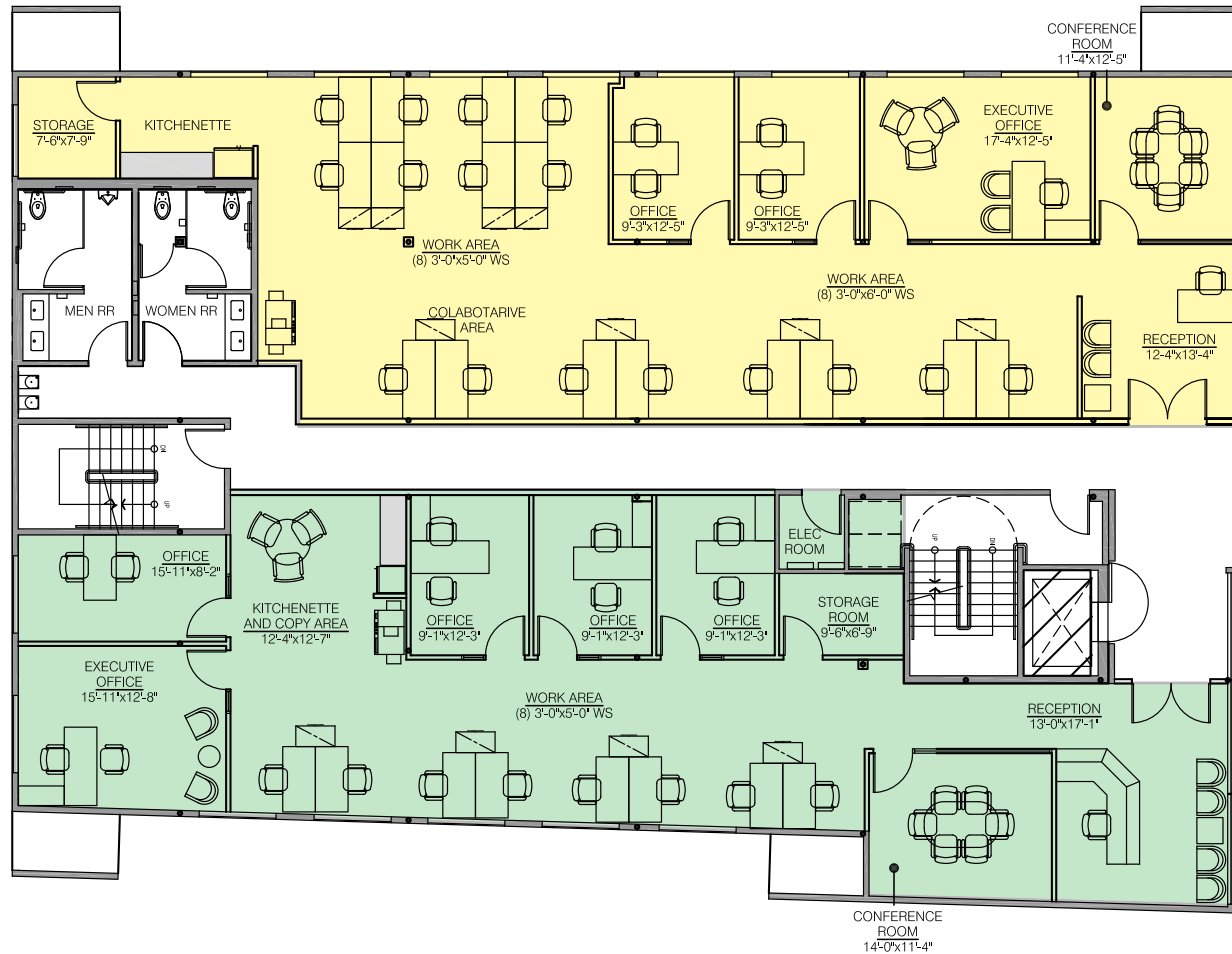


# SUITE 300/320 COMBINED



±5,199 SF

**SUITE 300:**  
±2,644 SF







**Adam Funk**  
Managing Director  
310.666.0124  
afunk@cagre.com  
Lic. 02129715

**Commercial Asset Group**  
190 N. Canon Drive, STE 300  
Beverly Hills, CA 90210  
P: 310.275.8222 F: 310.275.8223  
www.cagre.com Lic. 01876070



**COMMERCIAL  
ASSET GROUP**