

# 2115 Finch Avenue West, Toronto



MEDICAL SPACE AVAILABLE  
**FOR LEASE**

*For more information, please contact:*

***Greg Palin***

Real Estate Broker

**PAR-Med Realty Limited, Brokerage**

**Phone:** 416-364-5959 Ext. 421

**E-Mail:** gpalin@par-med.com

***Matthew Mulvihill***

Director of Real Estate Marketing

**PAR-Med Realty Limited, Brokerage**

**Phone:** 416-364-5959 Ext. 412

**E-Mail:** mmulvihill@par-med.com

# Welcome to 2115 Finch Avenue West

---

Newly renovated, modern medical office building situated a mere 200 meters from Highway 400 at Humber River Hospital's Reactivation Care Centre - Finch Site. Many different suite sizes and configurations available. Signing incentives such as free-rent periods and leasehold allowances that can be used for renovations are available for physicians and medical tenants. Call today to arrange a viewing and get personalized information on what type of inducements and deal we can offer to make 2115 Finch Ave West the new home of your medical practice or business.

## Building Highlights & Amenities

---

- Parking (\$5.00/per day for visitors)
- Patient Drop-off Area
- Handicap Accessible
- Public Transit In Front
- Many medical specialties on site
- 24/7 Security on Campus



---

**PAR-Med Realty Limited, Brokerage**

80 Richmond Street West, Suite 700, Toronto, ON M5H 2A4

Phone: (416) 364-5959 Web: [www.PAR-Med.com](http://www.PAR-Med.com)

# Location

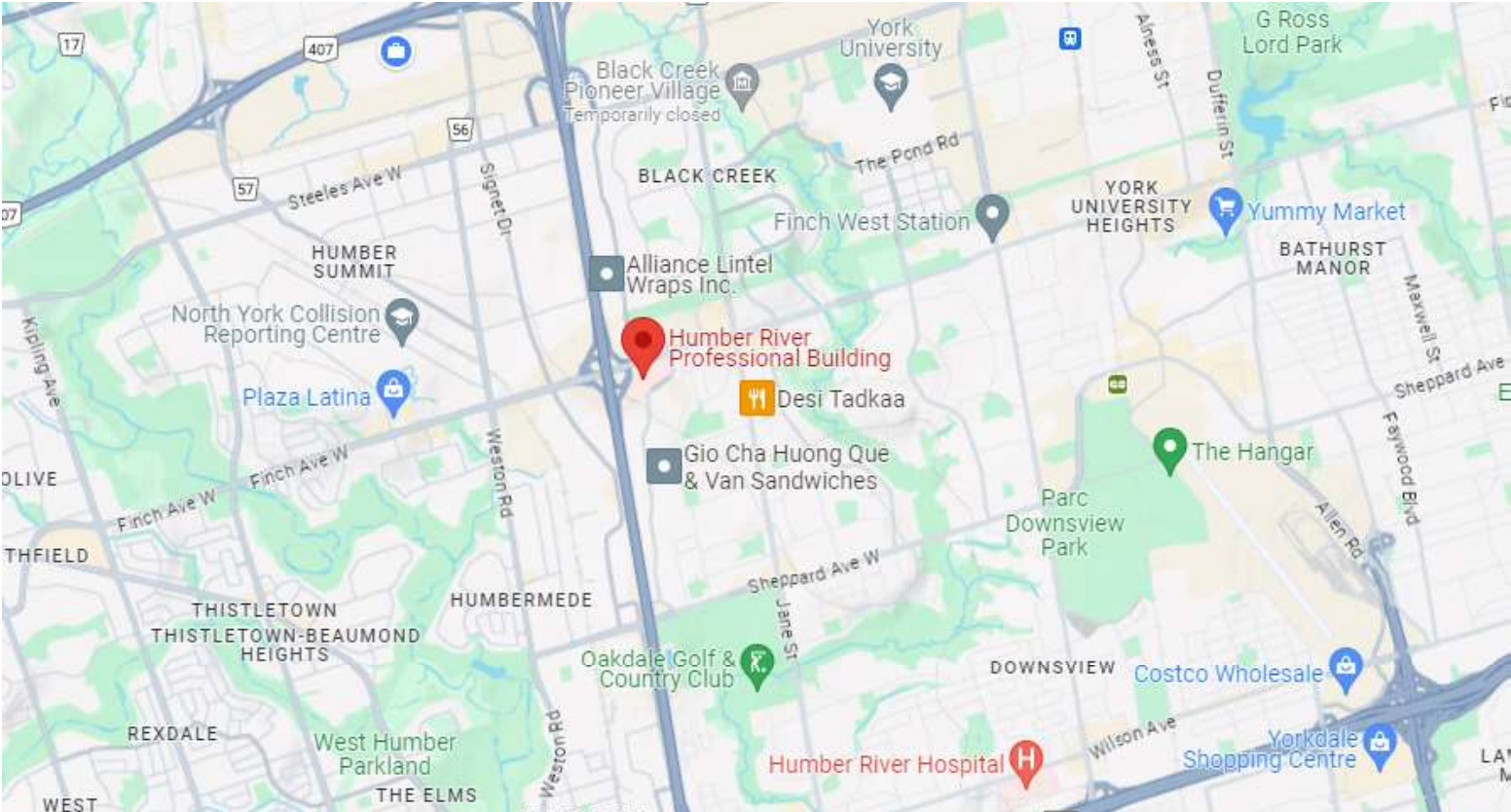
---



100m from the 400 exit  
at Finch Avenue West



Bus stop at property entrance  
by Finch & Oakville Road



# Net Rent

---

\$16.00 per square foot

# Additional Rent

---

\$20.67 per square foot

# Parking

---

Above ground parking lot immediately beside building. Free parking passes available for tenants and staff and affordable paid parking for patients (\$5.00 per day), with discounted options for bundles of parking passes available for patients who must be at the building frequently for appointments.

# Featured Available Space

**Suite 302** - 903 rentable sq.ft.  
South facing suite with new modern finishes.

**Suite 308** - 2,480 rentable sq.ft.

Corner Suite, 8 Exam Rooms or Offices, Large Waiting Area, En Suite Bathroom.

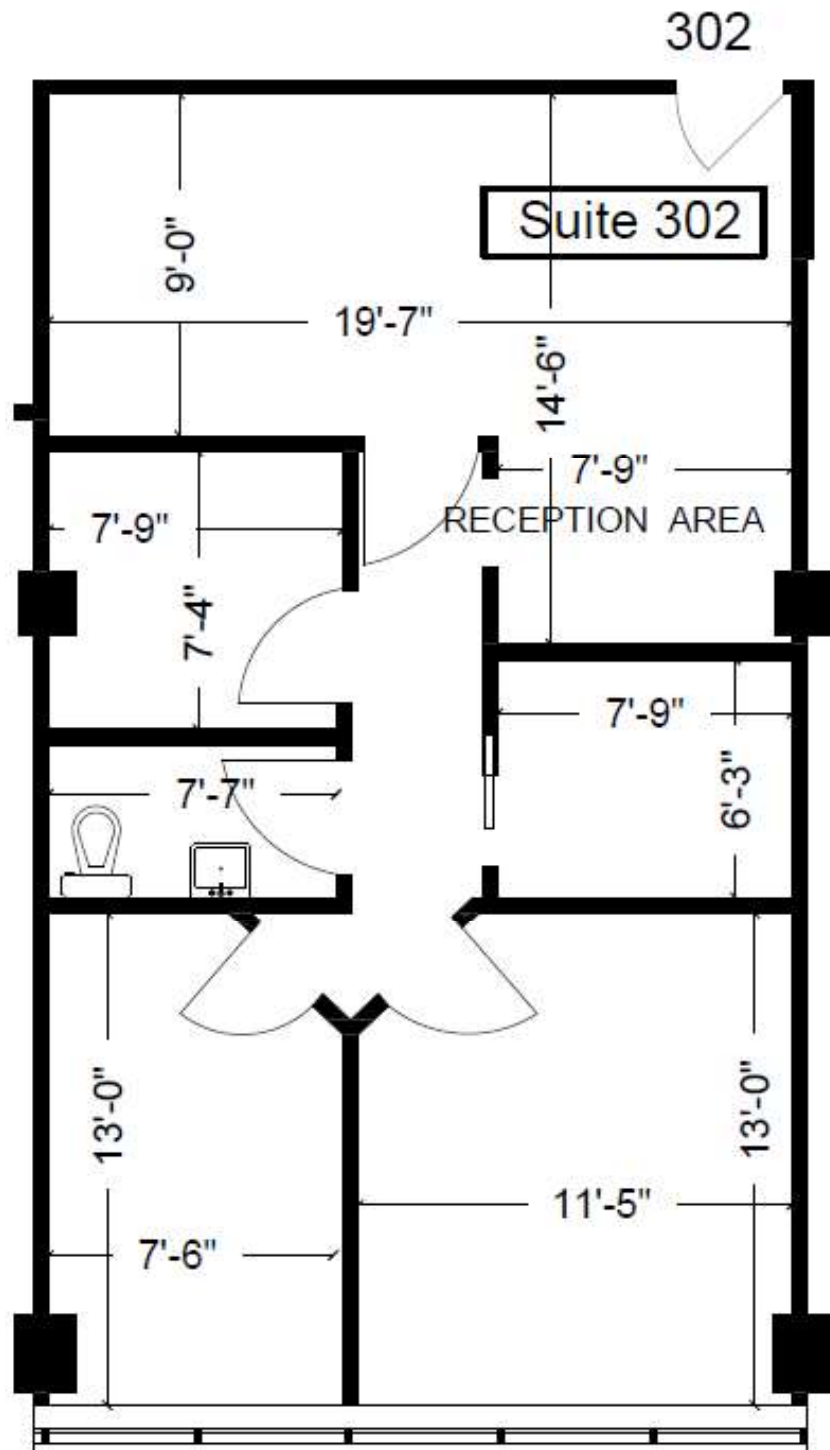
**Suite 312** - 899 rentable sq.ft.  
North facing suite with large bright windows.

**Suite 417** - 2,111 rentable sq.ft.

Turn-key Corner Suite, Renovated for Non-Clinical Use, Server Room, Storage Room, Staff Room, and 7 Offices.

**Suite 419** - 2,099 rentable sq.ft.

6 Exam Rooms or Offices, Server or Storage Room. Built-out for general office use, but could be converted to medical.

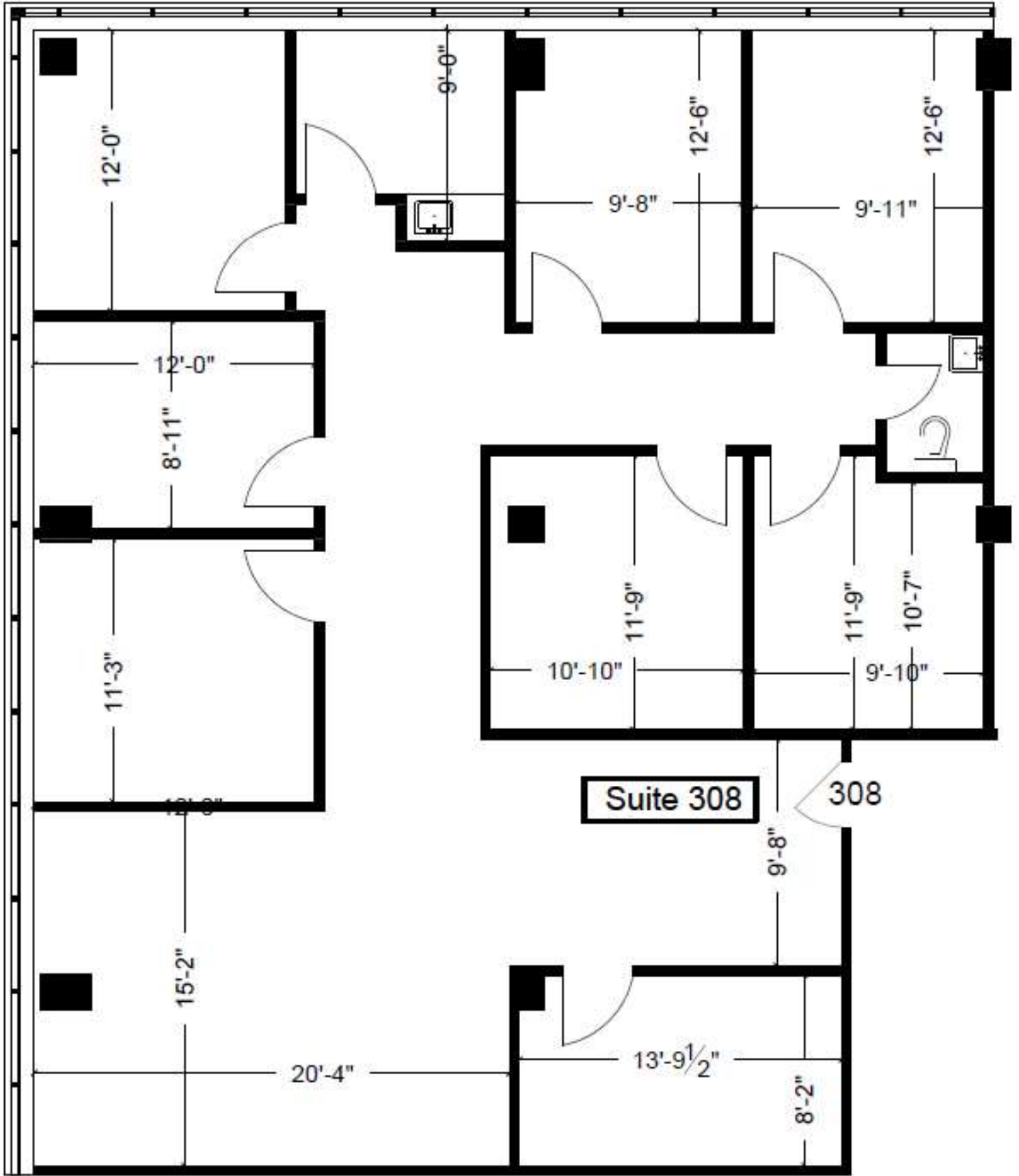


**PAR-Med Realty Limited, Brokerage**

80 Richmond Street West, Suite 700, Toronto, ON M5H 2A4

Phone: (416) 364-5959 Web: [www.PAR-Med.com](http://www.PAR-Med.com)

# Suite 308 - Floor Plan

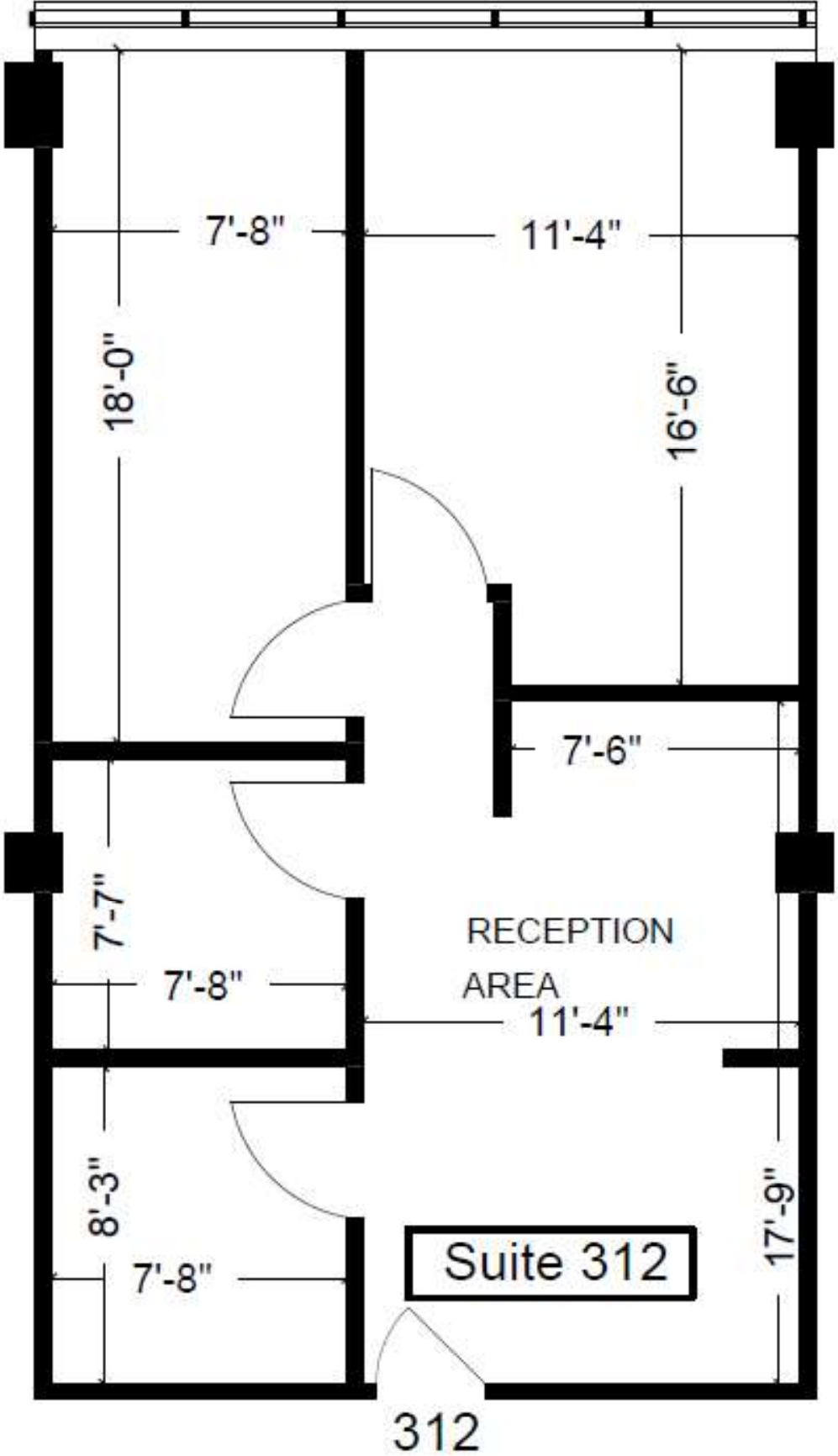


PAR-Med Realty Limited, Brokerage

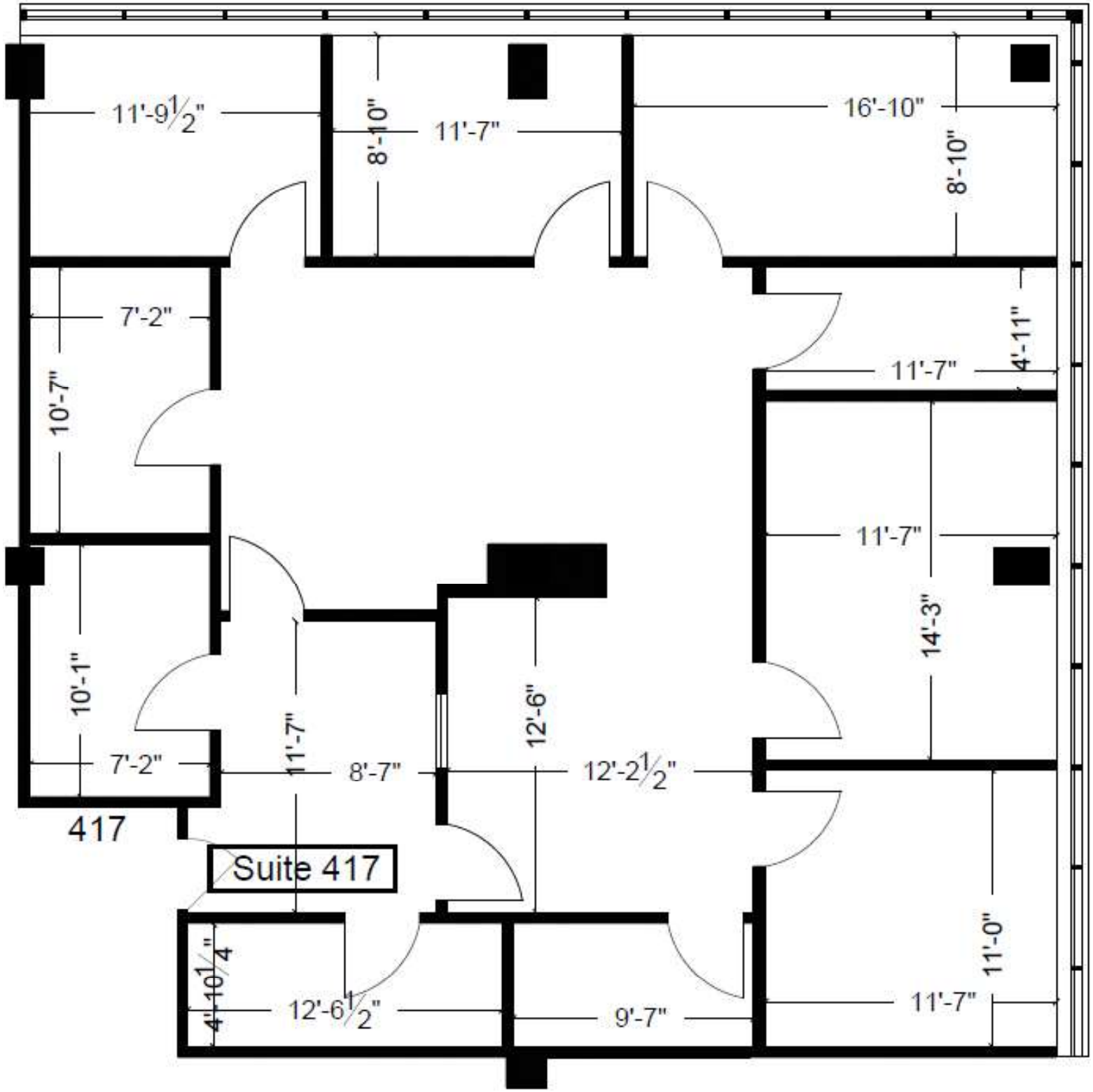
80 Richmond Street West, Suite 700, Toronto, ON M5H 2A4

Phone: (416) 364-5959 Web: [www.PAR-Med.com](http://www.PAR-Med.com)

# Suite 312 - Floor Plan



# Suite 417 - Floor Plan

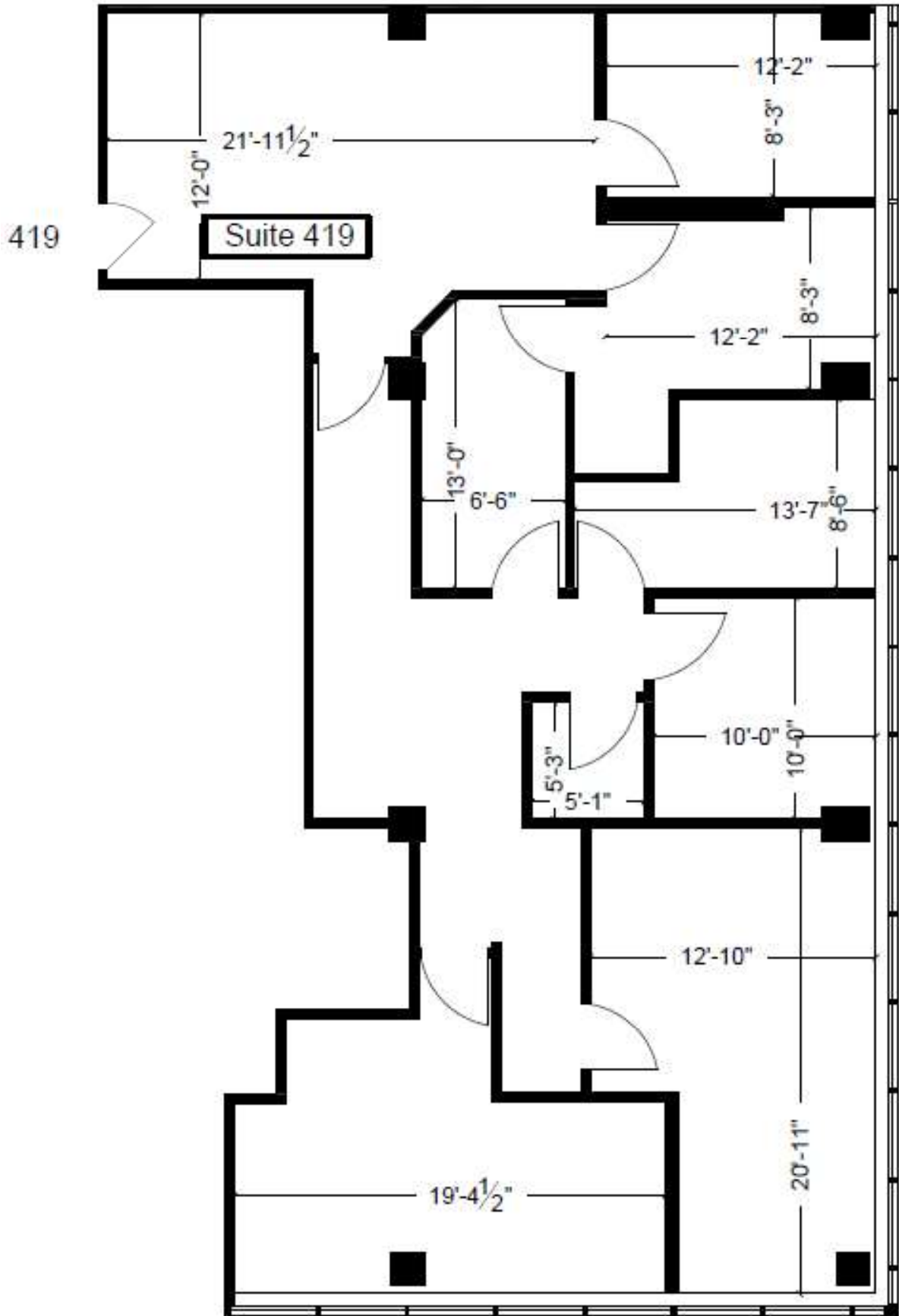


PAR-Med Realty Limited, Brokerage

80 Richmond Street West, Suite 700, Toronto, ON M5H 2A4

Phone: (416) 364-5959 Web: [www.PAR-Med.com](http://www.PAR-Med.com)

# Suite 419 - Floor Plan



PAR-Med Realty Limited, Brokerage

80 Richmond Street West, Suite 700, Toronto, ON M5H 2A4

Phone: (416) 364-5959 Web: [www.PAR-Med.com](http://www.PAR-Med.com)



# Suite Potential | Virtually Staged Photos



**PAR-Med Realty Limited, Brokerage**

80 Richmond Street West, Suite 700, Toronto, ON M5H 2A4

Phone: (416) 364-5959 Web: [www.PAR-Med.com](http://www.PAR-Med.com)

# Leasing Inquiries for: 2115 Finch Avenue West, Toronto

*For more information, please contact:*

## **Greg Palin**

Real Estate Broker

**PAR-Med Realty Limited, Brokerage**

**Phone:** 416-364-5959 Ext. 421

**E-Mail:** gpalin@par-med.com

## **Matthew Mulvihill**

Director of Real Estate Marketing

**PAR-Med Realty Limited, Brokerage**

**Phone:** 416-364-5959 Ext. 412

**E-Mail:** mmulvihill@par-med.com



*Scan to view more  
available suites*

