



RESTAURANT/
CAFE

399 FREMONT STREET

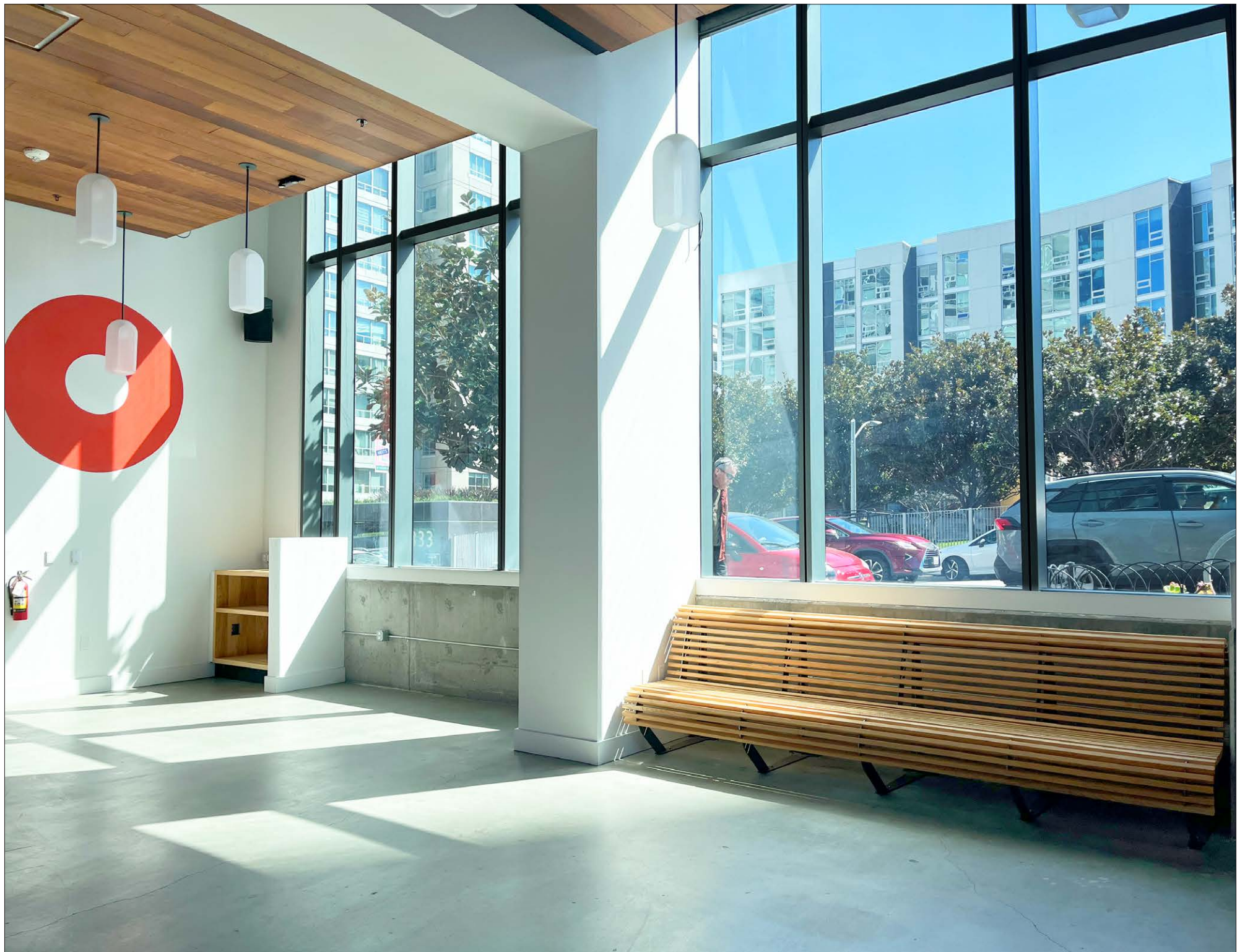




FEATURES

- +/- 3,500 SF
- Restaurant ready
- Excellent frontage
- Type 1 Hood
- High ceiling
- Clean Industrial style build-out
- Central location in Rincon Hill, amidst multiple high rise residential building and blocks from the waterfront





RINCON HILL

UNION SQUARE

ROAD T

ROAD E

ROAD 80

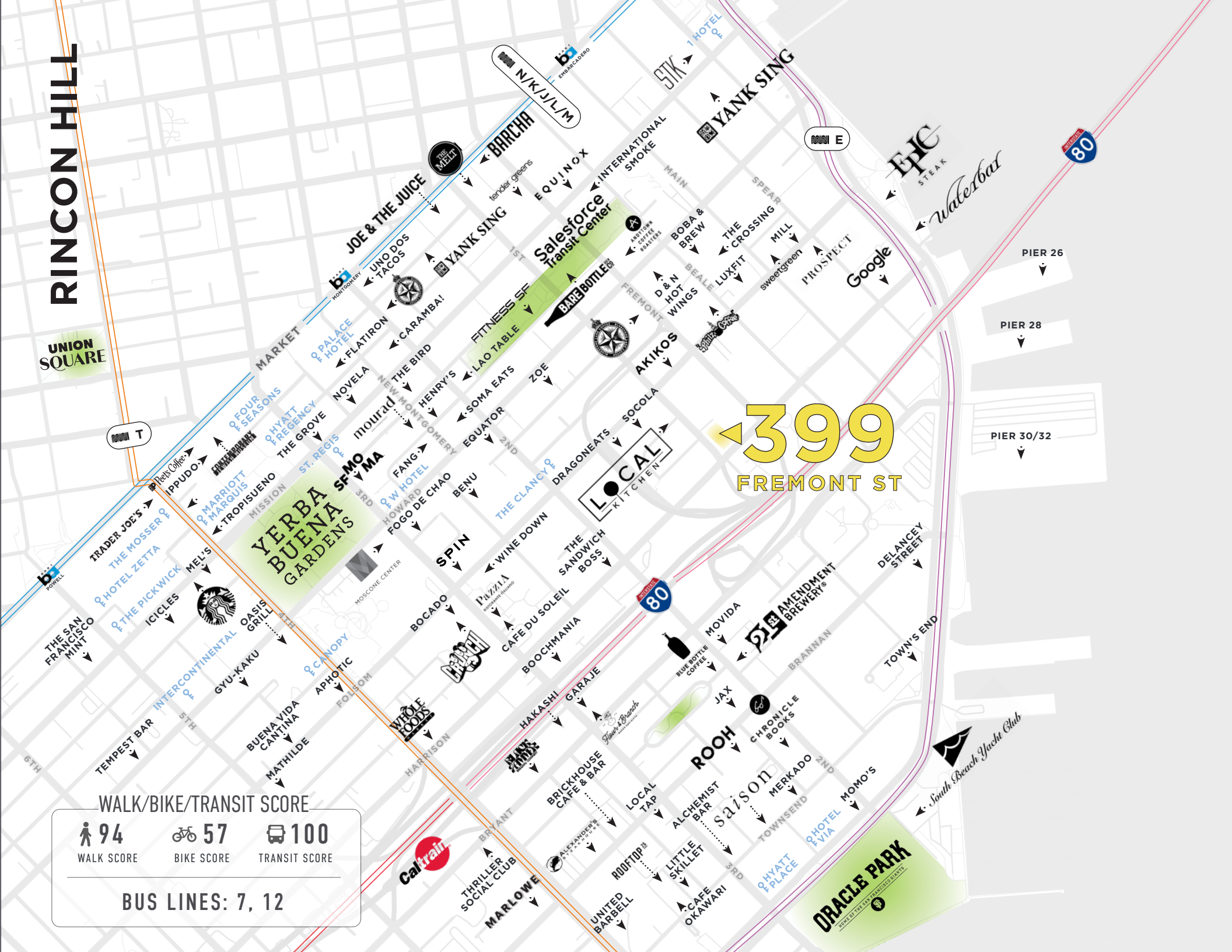
399

FREMONT ST

WALK/BIKE/TRANSIT SCORE

 94	 57	 100
WALK SCORE	BIKE SCORE	TRANSIT SCORE

BUS LINES: 7, 12



Epic STEAK

Waterbar

PIER 26

PIER 28

PIER 30/32

Google

LOCAL KITCHEN

YERBA BUENA GARDENS

ORACLE PARK

South Beach Yacht Club

Caltrain

THRILLER SOCIAL CLUB

MARLOWE

UNITED BARBELL

LOCAL TAP

ALCHEMIST BAR

ROOH

LITTLE SKILLET

CAFE OKAWARI

SAISON

MERKADO 2ND

TOWNSEND

PHYATT PLACE

PHYATT PLACE

MOMO'S

MOVIDA

EL AMENDMENT BREWERY

BRANNAN

TOWN'S END

DELANCEY STREET

DELANCEY STREET

DELANCEY STREET

DELANCEY STREET

DELANCEY STREET

DELANCEY STREET

DELANCEY STREET

DELANCEY STREET

DELANCEY STREET

WINE DOWN

PIZZA

BOOCHMANIA

CAFÉ DU SOLEIL

BOCHMANIA

HAKASHI

GARAJE

BRICKHOUSE CAFE & BAR

LOCAL TAP

ALCHEMIST BAR

ROOH

LITTLE SKILLET

CAFE OKAWARI

MOMO'S

MOMO'S

MOMO'S

MOMO'S

MOMO'S

MOMO'S

MOMO'S

MOMO'S

MOMO'S

MOMO'S

MOMO'S

MOMO'S

MOMO'S

MOMO'S

MOMO'S

MOMO'S

MOMO'S

MOMO'S

MOMO'S

MOMO'S

MOMO'S

MOMO'S

MOMO'S

MOMO'S

MOMO'S

MOMO'S

MOMO'S

MOMO'S

MOMO'S

MOMO'S

MOMO'S

MOMO'S

MOMO'S

MOMO'S

MOMO'S

MOMO'S

MOMO'S

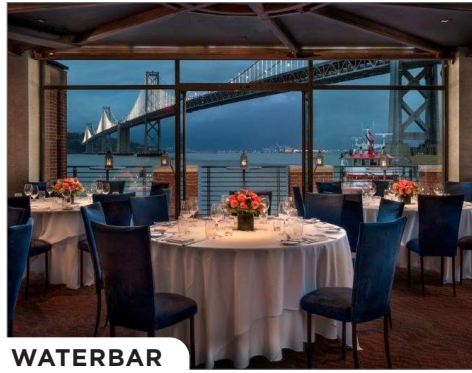
MOMO'S

MOMO'S

MOMO'S



AKIKO'S



WATERBAR



BLUESTONE LANE



WINE DOWN



SALESFORCE TRANSIT CENTER



DRAGONEATS



TOWNHALL



LOCAL KITCHEN & WINE MERCHANT



SOCOLA

RICON HILL

399 Fremont Street is located in the Rincon Hill.

Rincon Hill is a historic neighborhood located in the southeastern part of San Francisco, California. It's known for its stunning views of the San Francisco Bay and the Bay Bridge. It's a vibrant neighborhood with a mix of residential, commercial, and recreational spaces, attracting both residents and visitors alike. Its proximity to downtown San Francisco, the financial district, the waterfront and Mission Bay adds to its appeal, offering convenient access to employment opportunities, entertainment venues, and cultural attractions.

The neighborhood also boasts a diverse array of amenities and neighbors, adding to its appeal as a dynamic and livable neighborhood. Residents and visitors alike can enjoy the convenience of popular establishments such as Philz Coffee, known for its meticulously crafted brews and inviting atmosphere. Nearby, culinary delights await at Dragon Eats, offering a fusion of Asian flavors, and Bluestone Lane Avery Cafe, serving up Australian-inspired cuisine and specialty coffee.



Contact

CATHERINE MEUNIER

Office 415.806.5566

catherine@mavenproperties.com

DRE #01843732

PAMELA MENDELSON

Office 415.404.6650

pam@mavenproperties.com

DRE #00953050

NOTICE: This information has been secured from sources we believe to be reliable but we make no representations, warranties, express or implied, as to the accuracy of the information. Listing broker has been given enough information to provide only a preliminary interest in the property. The materials are not to be considered fact. The information contained herein is not a substitute for thorough due diligence investigation. References to square footage, zoning, use, or age are approximate. Please contact the San Francisco Planning Department to verify zoning at (415) 558-6378, as neither broker or landlord represent that this space is suitable for your use. Tenant or Buyer must verify the information at their own expense and bears all the risk for any inaccuracies. By receiving these materials you are agreeing to the disclaimers set forth herein. DRE#01878802

466 Green Street Suite #203

San Francisco, CA 94133

415-781-770

www.mavenproperties.com