



# 715 & 717 RANGE END ROAD

DILLSBURG, PENNSYLVANIA 17019

FOR  
LEASE

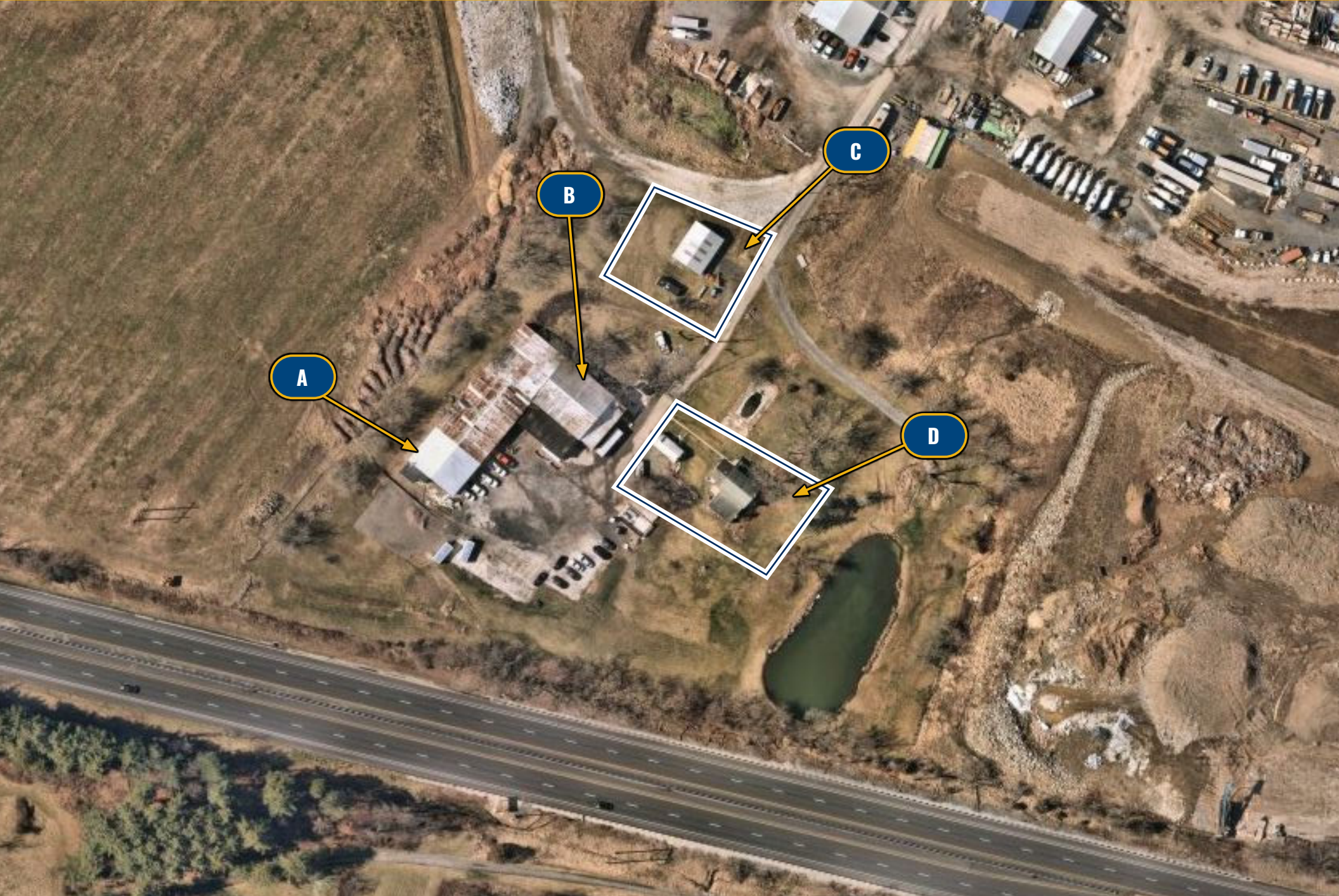


**MACKENZIE**

COMMERCIAL REAL ESTATE SERVICES, LLC



# AVAILABLE BUILDINGS





# PROPERTY OVERVIEW

## HIGHLIGHTS:

- Proposed subdivision to include 5 separate Lots with opportunity for lease and sale
- Multiple tenants in place - Potential for Investment sale and Owner user opportunity
- Mixed use zoning
- Fenced 0.33 Acre lot for lease
- Lease opportunity for 4 buildings with outside storage

## AVAILABLE:

- Building A - 2,200 SF **available for lease/sale**  
1 drive-in door, 400 amps of single-phase electric
- Building B - 12,200 SF **available for lease/sale**  
2 drive-on doors
- Building C - 1,500 sf **available for lease**  
Storage building with 0.33 Acre outside storage
- Building D - 1,800 sf **available for lease**  
Office with ¼ Acre outside storage
- Storage Lot - 0.33 Acre **available for Lease**  
\$1,750 per month





# PROPOSED SUB DIVISION PLAN



PROPOSED LOT #1

PROPOSED LOT #4

PROPOSED LOT #2

PROPOSED LOT #5

PROPOSED LOT #3

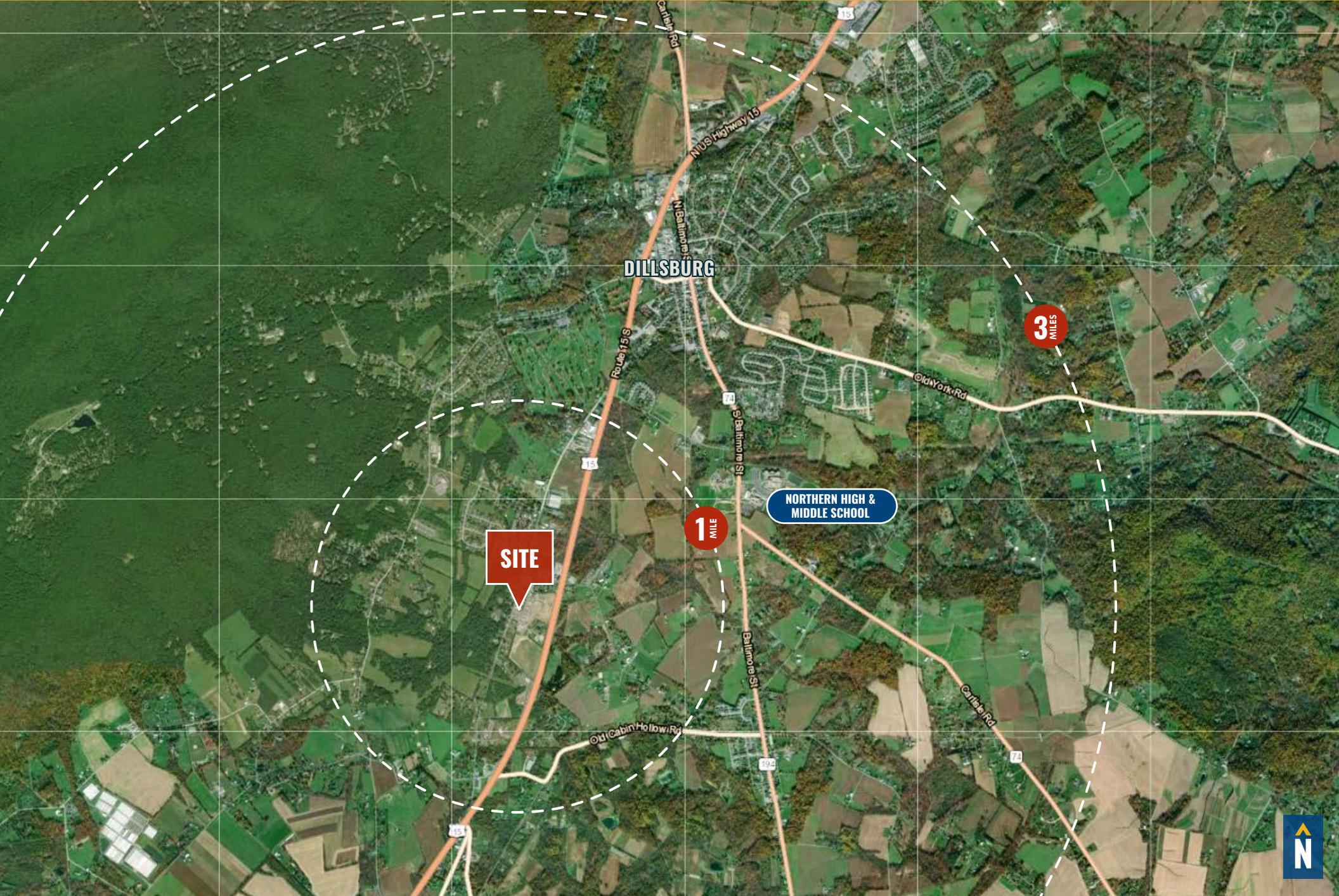


# ADDITIONAL PHOTOS





# LOCAL TRADE AREA





# DEMOGRAPHICS

2024

RADIUS:

1 MILE

3 MILES

5 MILES

## RESIDENTIAL POPULATION



790

5,555

9,822

## DAYTIME POPULATION



1,187

9,296

15,622

## AVERAGE HOUSEHOLD INCOME



\$76,368

\$107,198

\$116,361

## NUMBER OF HOUSEHOLDS



632

4,593

7,900

## MEDIAN AGE

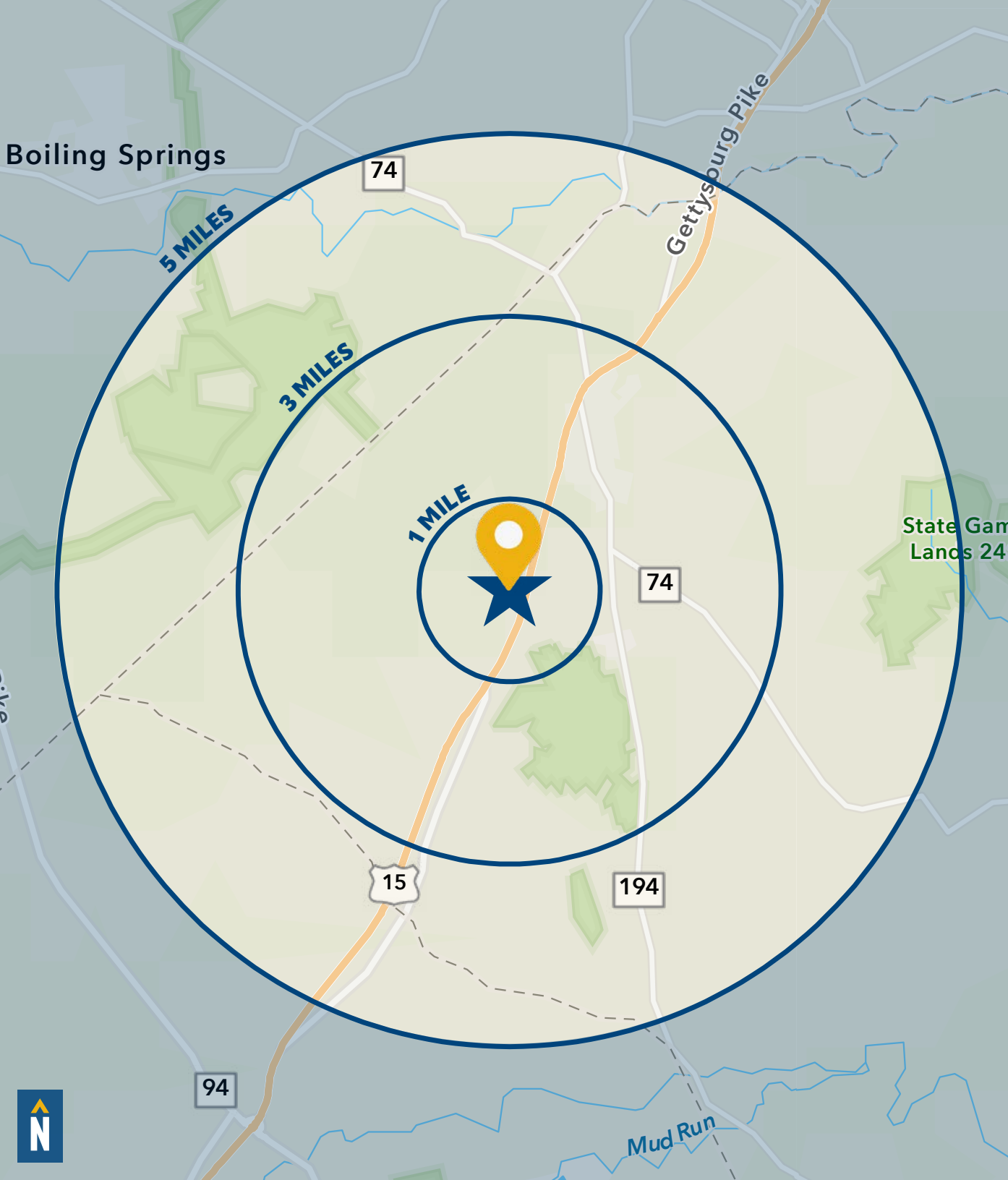


41.8

41.3

42.8

[FULL DEMOS REPORT](#)



# FOR MORE INFO **CONTACT:**



## **DENNIS BOYLE, SIOR**

SENIOR VICE PRESIDENT

**443.798.9339**

**DBOYLE@mackenziecommercial.com**



## **PATRICK SMITH, SIOR**

VICE PRESIDENT

**410.494.4866**

**PSMITH@mackenziecommercial.com**



VISIT **PROPERTY PAGE** FOR MORE INFORMATION.



# **MACKENZIE**

COMMERCIAL REAL ESTATE SERVICES, LLC

**410-821-8585**

**2328 W. Joppa Road, Suite 200  
Lutherville, MD 21093**

OFFICES IN: ANNAPOLIS, MD BALTIMORE, MD BEL AIR, MD COLUMBIA, MD **LUTHERVILLE, MD** CHARLOTTESVILLE, VA

**www.MACKENZIECOMMERCIAL.com**

*No warranty or representation, expressed or implied, is made as to the accuracy of the information contained herein, and same is submitted subject to errors, omissions, change of price, rental or other conditions, withdrawal without notice, and to any specific listing conditions imposed by our principals.*