

N Church St, Rocky Mount NC, 27804 (Parcel ID = 015722)



Asking price: \$345,000



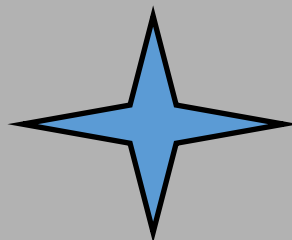
Phillip Rabil

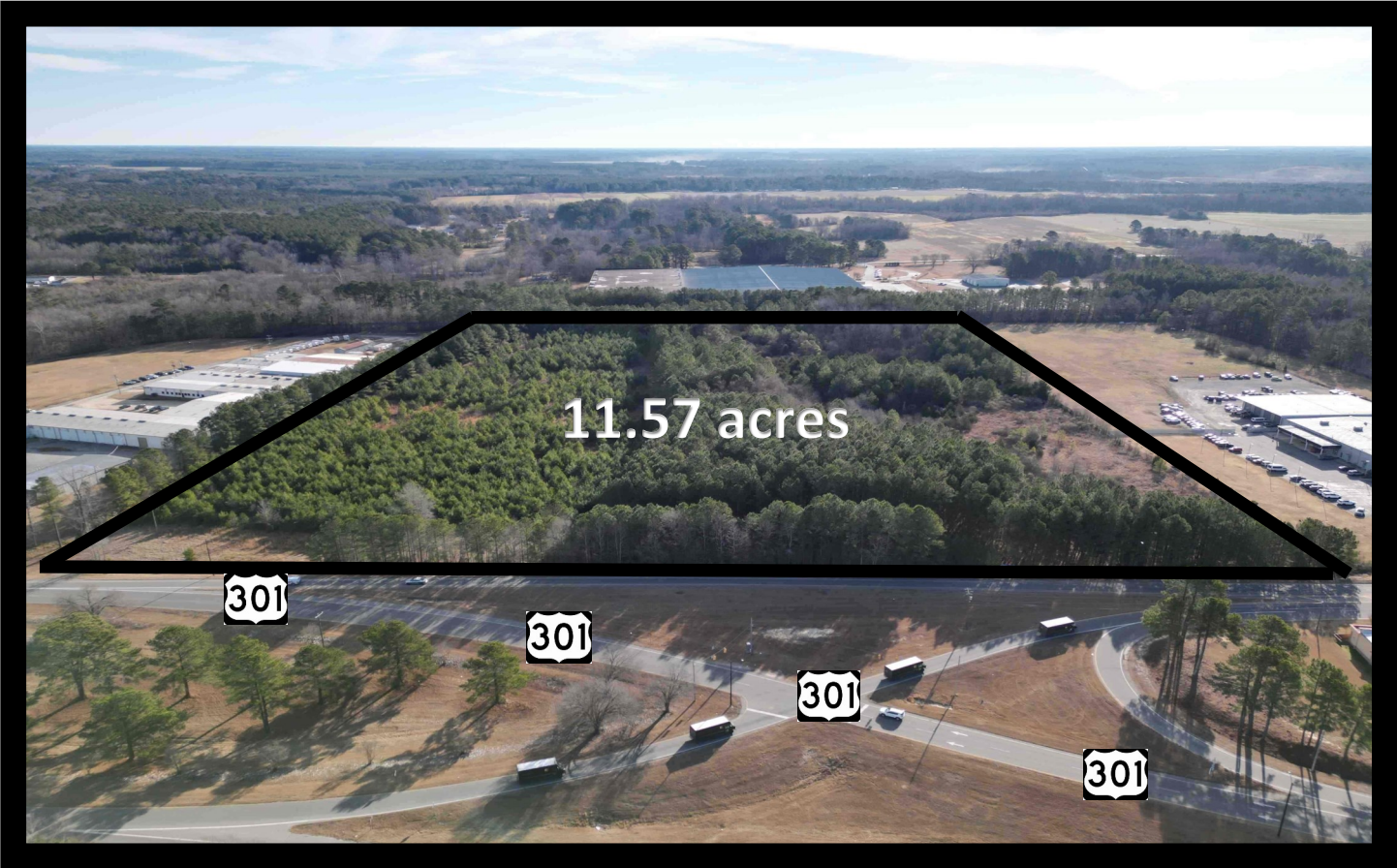
Phillip@chambliss-rabil.com

Mobile: (252) 382-8117

Office: (252) 443-5115

Fax: (252) 442-9487





Listing Details

Sale Type	Investment/OU
Property Type	Vacant Land
Subtype	Commercial Land
Acres	11.57
Zoning	B5-CD

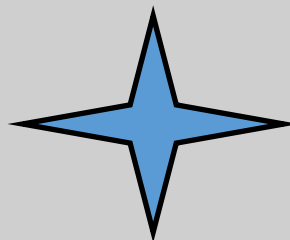
Highlights

- .Over 11 acres of land
- .Located at 301 highway exit
- .Next door to KIA Auto-dealership
- .Has multiple utility lines present
- .Large amount of street frontage
- .High visibility
- .Zoned commercial
- .Great development opportunity
- .5 min drive from Wesleyan College
- .5 min drive from CSX Cargo spot

Located in Rocky Mount NC, this parcel provides a developer over 11 acres of commercial land. The land has visibility from highway 301 and is next door to KIA Auto-dealership. The property offers a large amount of road frontage and offers high visibility from 2 different streets. City utility lines are present and this property is only a 5 min drive from a CSX cargo terminal. Don't miss an opportunity to own a large property that is right by the highway and offers multiple development opportunities.



Phillip Rabil
Phillip@chambliss-rabil.com
 Mobile: (252) 382-8117
 Office: (252) 443-5115
 Fax: (252) 442-9487



821 Country Club Rd, Suite 10
 Rocky Mount NC, 27804
WWW.Chambliss-Rabil.com



Phillip Rabil
Phillip@chambliss-rabil.com
Mobile: (252) 382-8117
Office: (252) 443-5115
Fax: (252) 442-9487

