

Jennifer Gibian NICDQ  
416 S. Jackson St.  
Media, PA 19063  
phone: (215) 805-1054  
email: jennifer@jml-design.com



1000 Germantown Pk.  
Plymouth Meeting, PA  
19462

EXISTING  
CONDITIONS PLAN  
UNIT C4 and C6  
BASEMENT

Project Number: 24-012

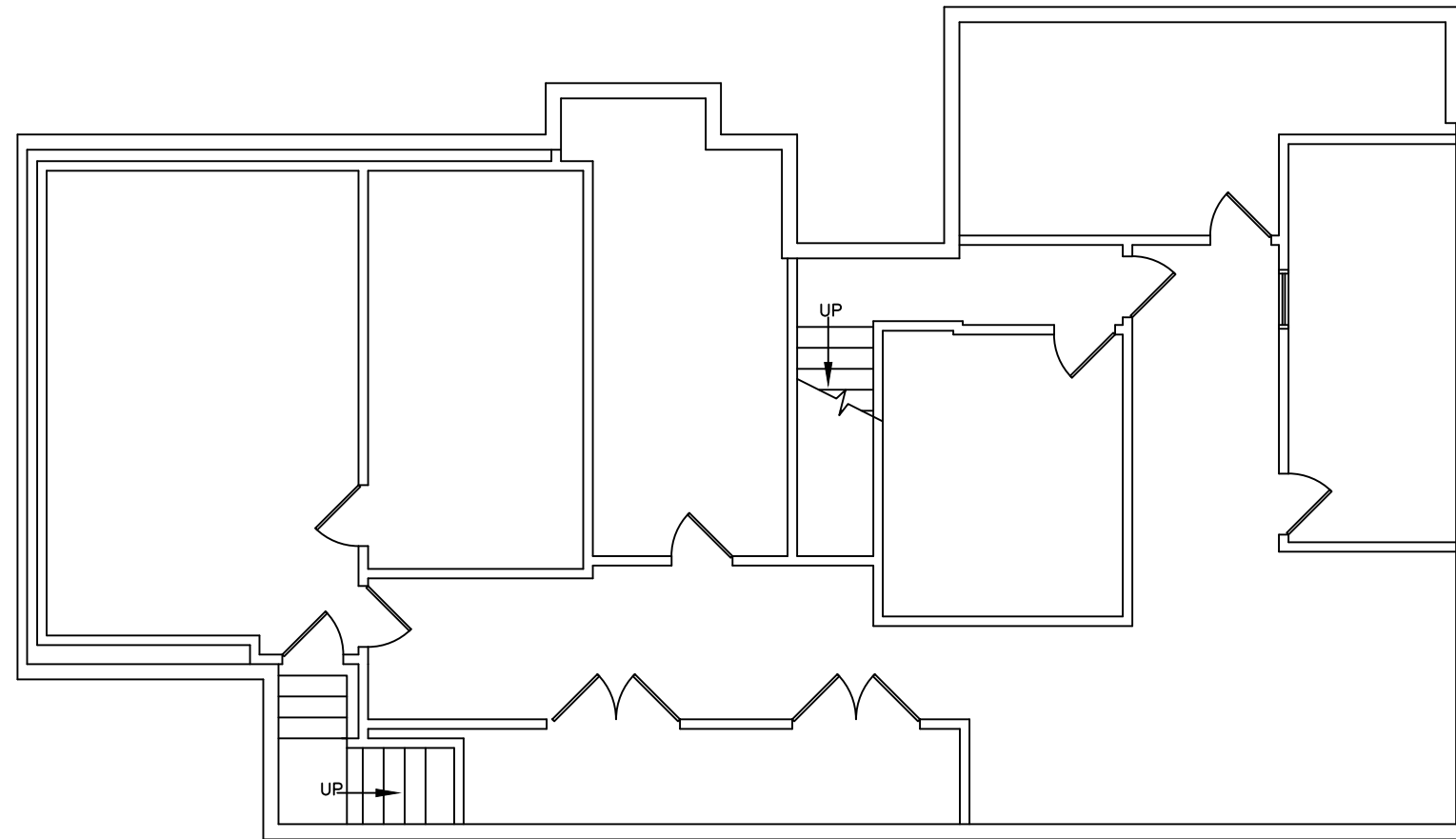
Scale: 1/8" = 1'-0"

Drawn By: JGG

Date: 05.28.24

Revision:

Sheet No.



1 EXTG CONDITIONS: BASEMENT  
EC.1A SCALE: 1/8" = 1'-0"

EC.1A



1000 Germantown Pk.  
Plymouth Meeting, PA  
19462

EXISTING  
CONDITIONS PLAN  
UNIT C4 and C6  
1ST FLOOR

Project Number: 24-012

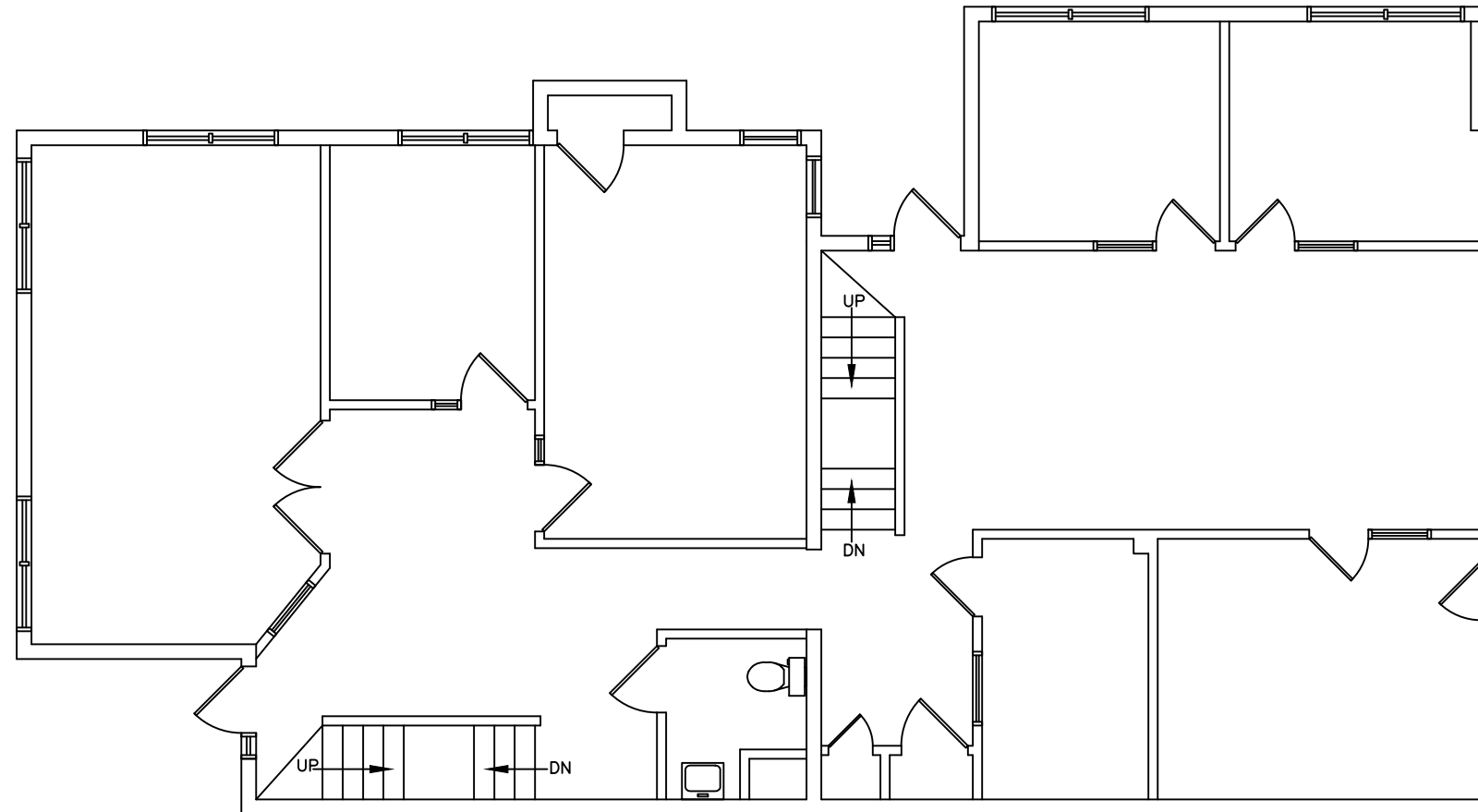
Scale: 1/8" = 1'-0"

Drawn By: JGG

Date: 05.28.24

Revision:

Sheet No.



1 EXTG CONDITIONS: 1ST FLOOR  
EC.1B SCALE: 1/8" = 1'-0"

EC.1B

Jennifer Gibian NICDQ  
416 S. Jackson St.  
Media, PA 19063  
phone: (215) 805-1054  
email: jennifer@jml-design.com



1000 Germantown Pk.  
Plymouth Meeting, PA  
19462

EXISTING  
CONDITIONS PLAN  
UNIT C4 and C6  
2ND FLOOR

Project Number: 24-012

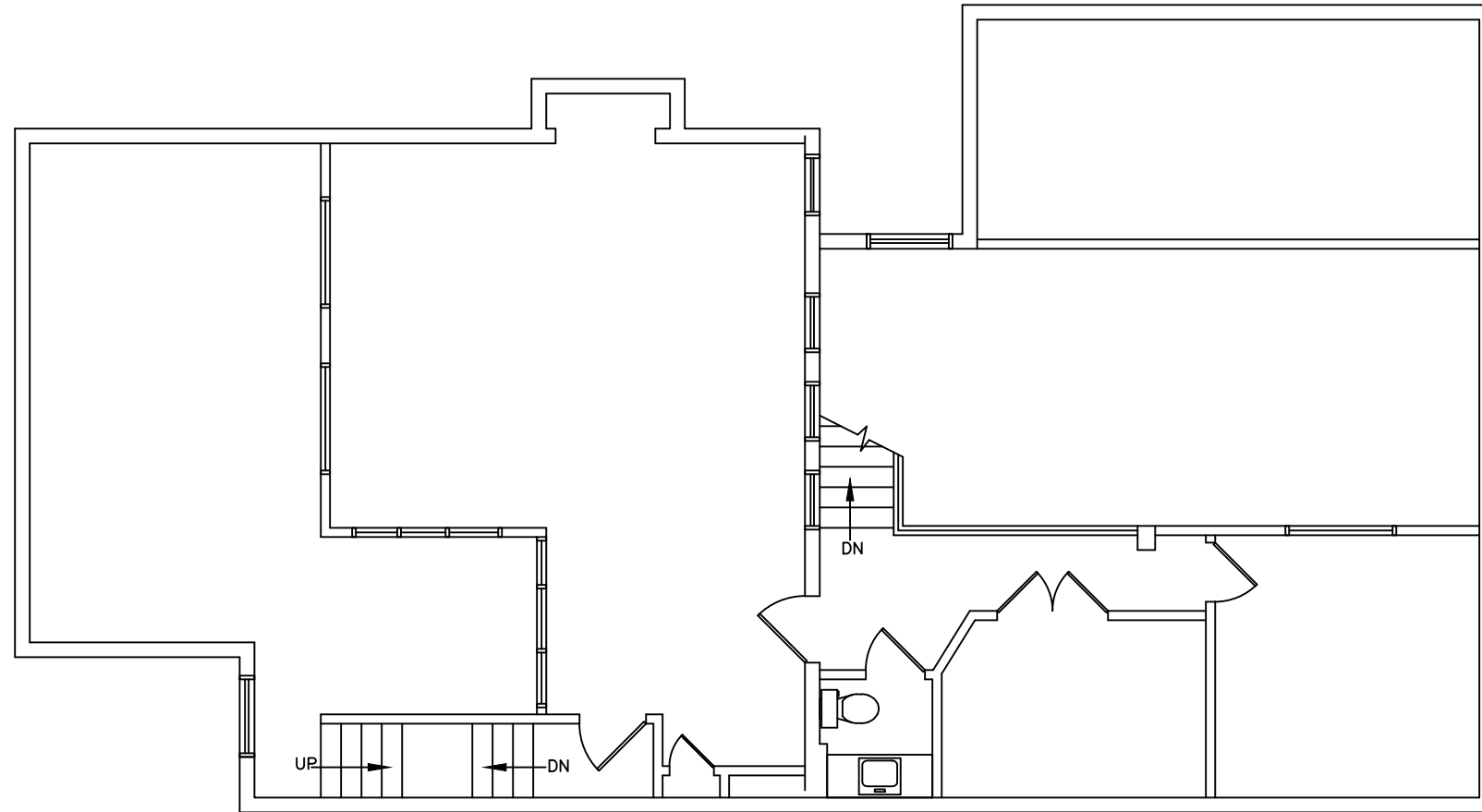
Scale: 1/8" = 1'-0"

Drawn By: JYG

Date: 05.28.24

Revision:

Sheet No.



1 EXTG CONDITIONS: 2ND FLOOR  
EC.1C SCALE: 1/8" = 1'-0"

EC.1C