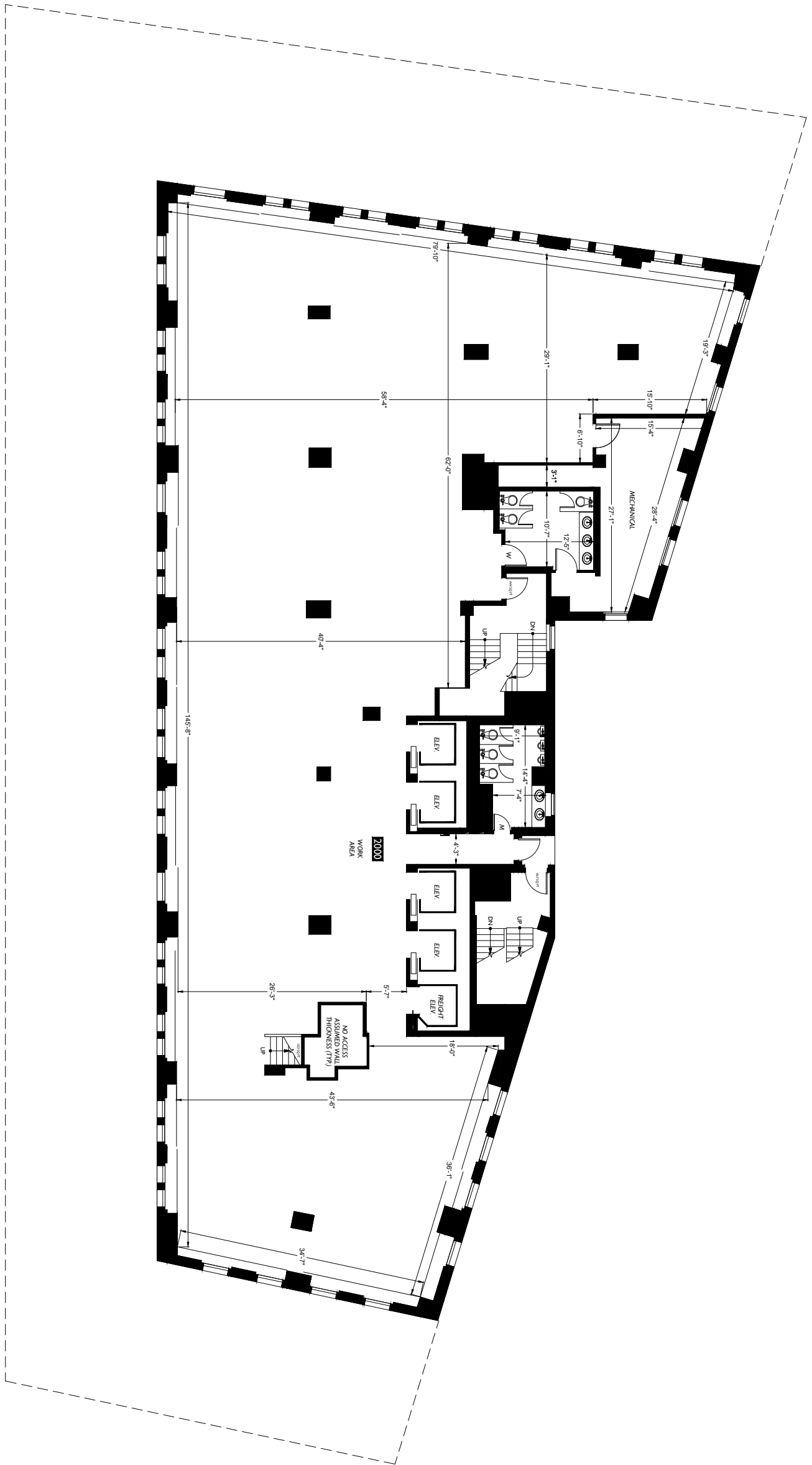


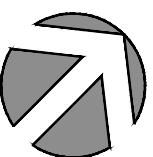
Cliff Street



Parking Lot

John Street

Pearl Street



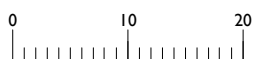
Braun Management, Inc.  
 160 Broadway, First Floor  
 New York, NY 10038

Office Building  
 111 John Street  
 New York, NY 10038

Floor Plan

20

Floor



Scale



2DFLOORPLANS.COM  
 206-328-7410

600 NW Gilman Blvd. Suite E  
 Issaquah, WA 98027

Measured: September 2017 Project: C23-655

Client

Subject