

Industrial Development Parcel Available

2960 Felton Road
East Norriton Township, PA



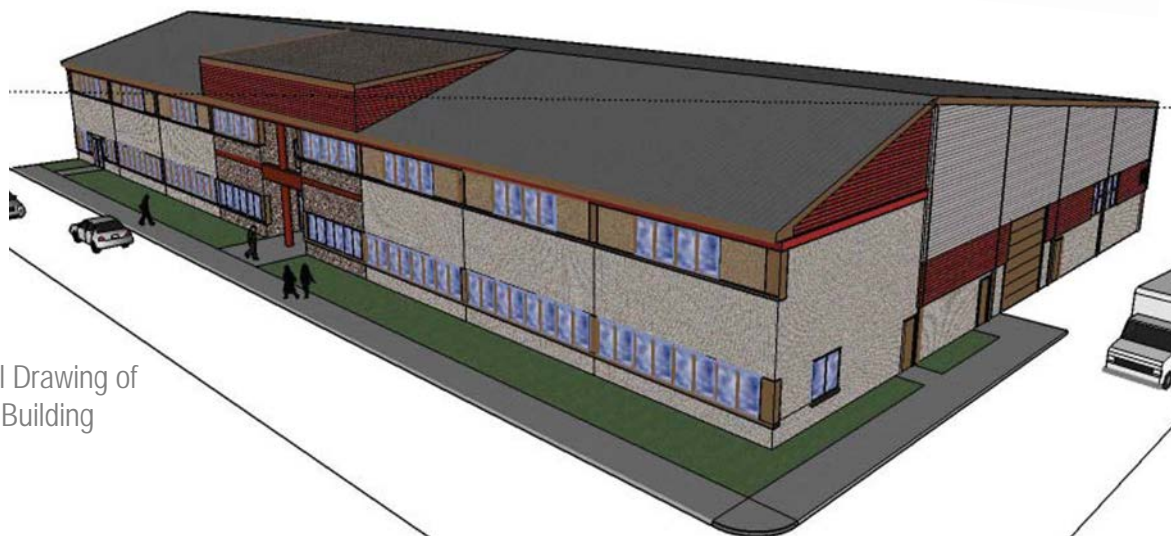
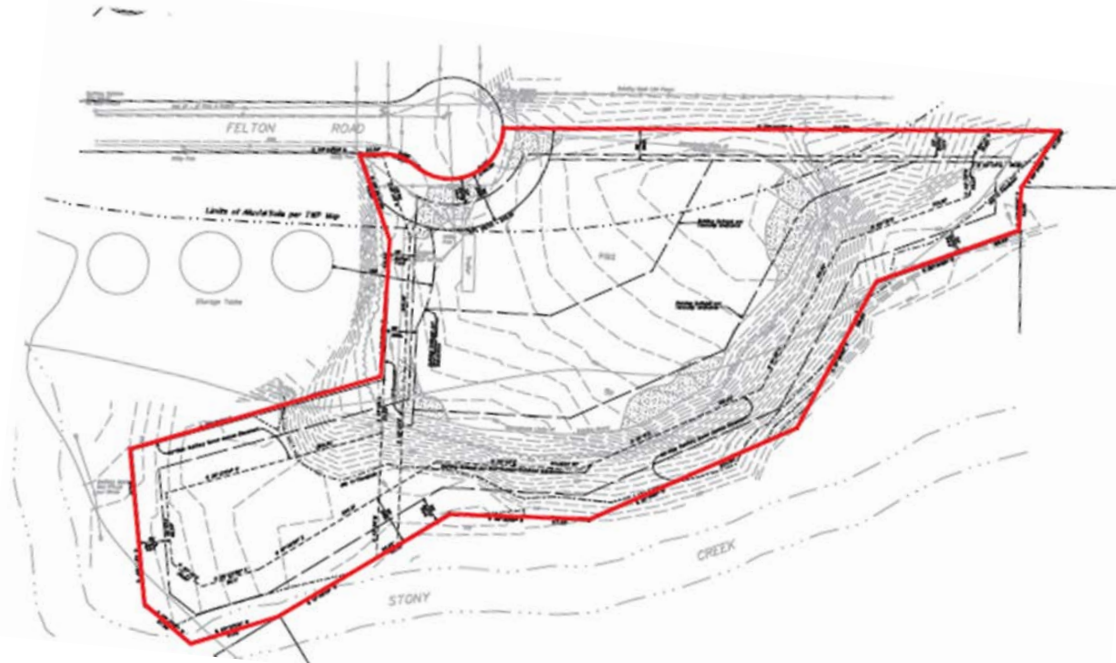
Property highlights

- Zoned "I" Industrial
- 5.194 acres
- Tax parcel # 33-00-02656-50-6
- Includes plans for a fully designed 30,000 SF office/industrial building
- 10 minutes to Mid-County interchange, PA Turnpike and Northeast extension
- Just west of the intersection of W. Germantown Pike and Route 202

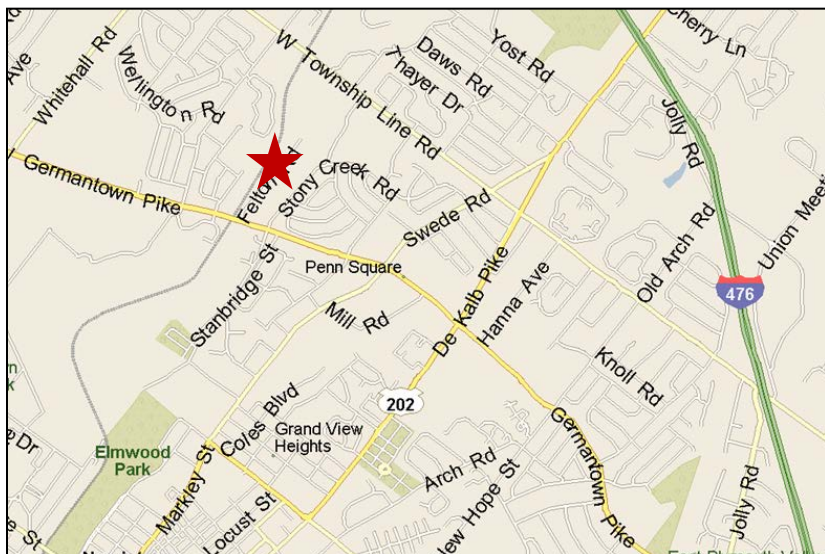
Contact

Doug Newbert
+1 610 249 2273
doug.newbert@am.jll.com

1235 Westlakes Drive
Suite 210
Berwyn, PA 19312
+1 610 249 2255



Conceptual Drawing of 30,000 SF Building



Contact

Doug Newbert
 +1 610 249 2273
 doug.newbert@am.jll.com

1235 Westlakes Drive
 Suite 210
 Berwyn, PA 19312
 +1 610 249 2255