

RETAIL SPACES FOR LEASE

**145 GOVERNMENT RD. W.
KIRKLAND LAKE, ON**



YOUR SIGN HERE



**UNIT 110
1,350 SF**

YOUR SIGN HERE



**UNIT 125
1,816 SF**

WWW.PIVOTALCOMMERCIALREALTY.COM

PROPERTY HIGHLIGHTS

Prime leasing opportunities at **145 Government Road West**, a four-storey mixed-use building in the heart of Kirkland Lake, Ontario—the economic centre of Temiskaming. We have two retail units available and an office unit on the second floor available **For Lease**.

Located next to the high-traffic Kirkland Lake Mall plaza, anchored by McDonald's, Tim Hortons, Independent Grocer, Canadian Tire, and Shell Gas Station. Excellent visibility and daily traffic. Ample on-site surface parking included.

Strong tenant mix include:

- Northern Credit Union
- ServiceOntario
- Kirkland Lake Gold
- Ministry of Natural Resources
- ODSP
- Kuuwanimano Child and Family Services
- Temiskaming Healthcare

Available For Lease:

- Unit 110: 1,350 SF ground-floor – flexible retail/service/office space with great accessibility.
- Unit 125: 1,816 SF ground-floor southwest corner – bright with two walls of windows, adjacent to parking lot, direct exterior door access for shorter customer walks.
- Unit 201: 3,643 SF second-floor southeast corner – spacious, light-filled office with two walls of windows.

Gross Rent: Call Broker(s)



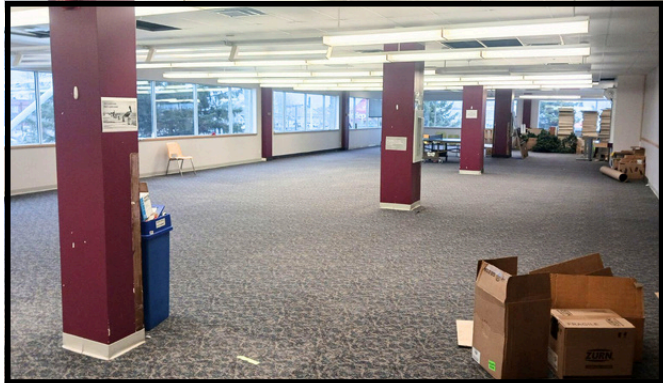
FLOOR PLAN - GROUND FLOOR- UNIT 110 & 125



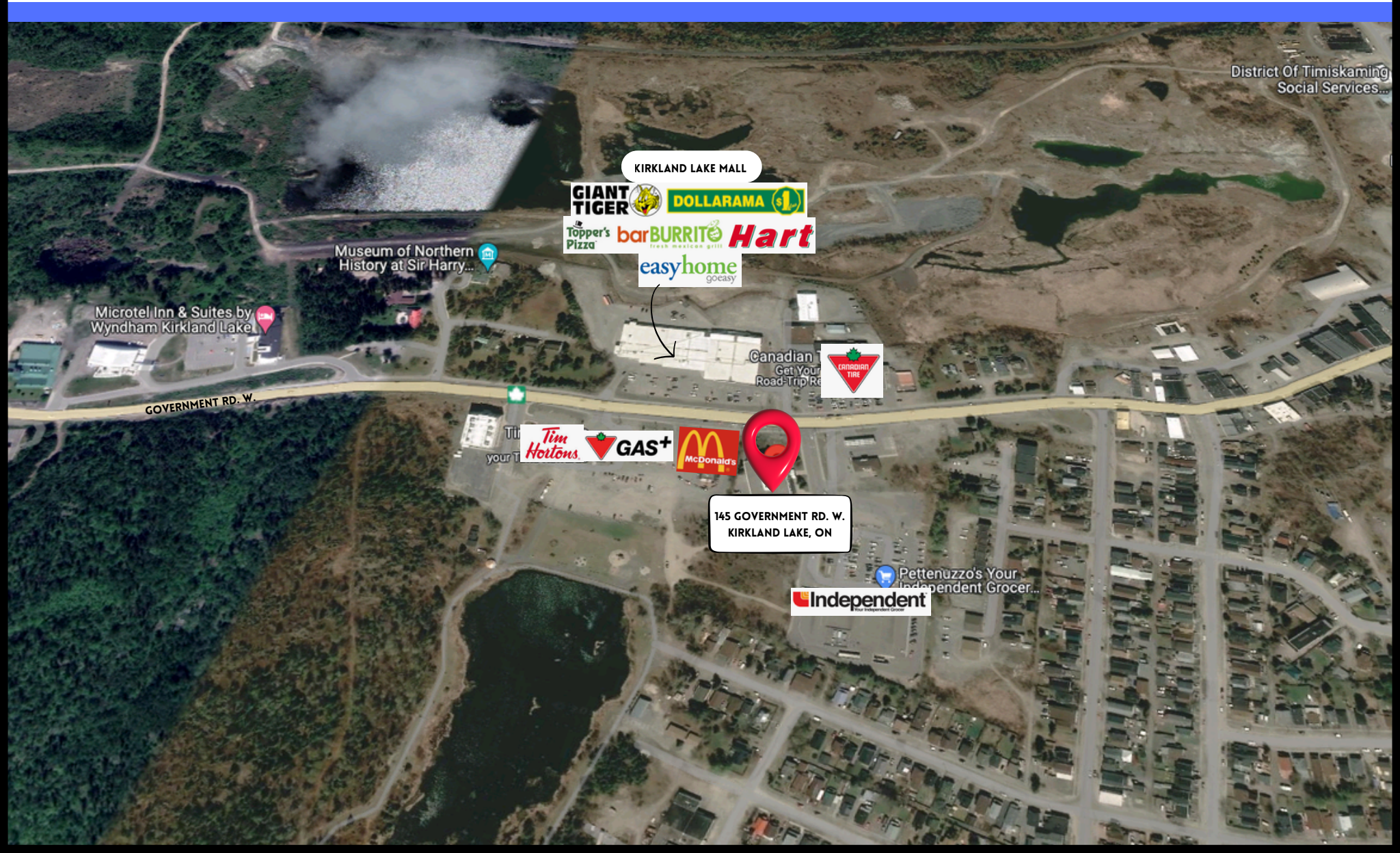
INTERIOR PHOTOS - GROUND FLOOR- UNIT 125



INTERIOR PHOTOS - SECOND FLOOR- UNIT 201



SITE AREA



CONTACT INFORMATION


145 GOVERNMENT RD. W.,
KIRKLAND LAKE, ON



KEVIN ALEXANDER, B.A. Econ.
Vice President | Broker
416.900.3878 X:106
kevin@pivotalcommercialrealty.com

SHAWN ABRAMOVITZ, B.A.
CEO | BROKER OF RECORD
416.900.3878 X:102
shawn@pivotalcommercialrealty.com

YOUR SIGN HERE



UNIT 110
1,350 SF

YOUR SIGN HERE



UNIT 125
1,816 SF