

ELEVATE AT CENTRAL CENTENNIAL

7173 S Revere Pkwy
Centennial, CO 80112

Industrial Sublease

15,663 SF



For Leasing Information, contact:

Mark Dwyer
303.877.1620
mdwyer@lpc.com

Sam Slaton
303.517.5183
sslaton@lpc.com

Lincoln

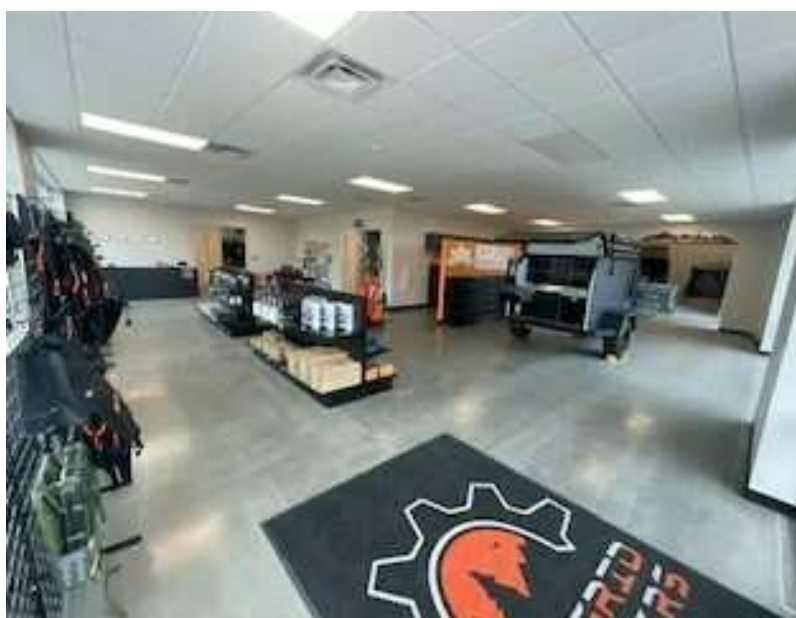
Lincoln Property Company
2000 S Colorado Blvd, Tower 3, Suite 825
Denver, CO 80222

www.lpc.com

ELEVATE AT CENTRAL CENTENNIAL

Industrial Sublease

7173 S Revere Pkwy | Centennial, CO 80112



Property Highlights

- 15,663 SF with 2,250 SF Spec Office
- 3 dock high
- 1 drive-in
- 24' clear height
- OpEx estimate | \$6.13 / SF
- Sublease term thru 11/30/28
- Parking ratio 1.59 / 1,000
- ESFR sprinkler system

Availabilities

Suite 100

SF

15,663 SF

Lease Rate

\$13.50 NNN

Date Available

Available Immediately



Mark Dwyer
303.877.1620
mdwyer@lpc.com

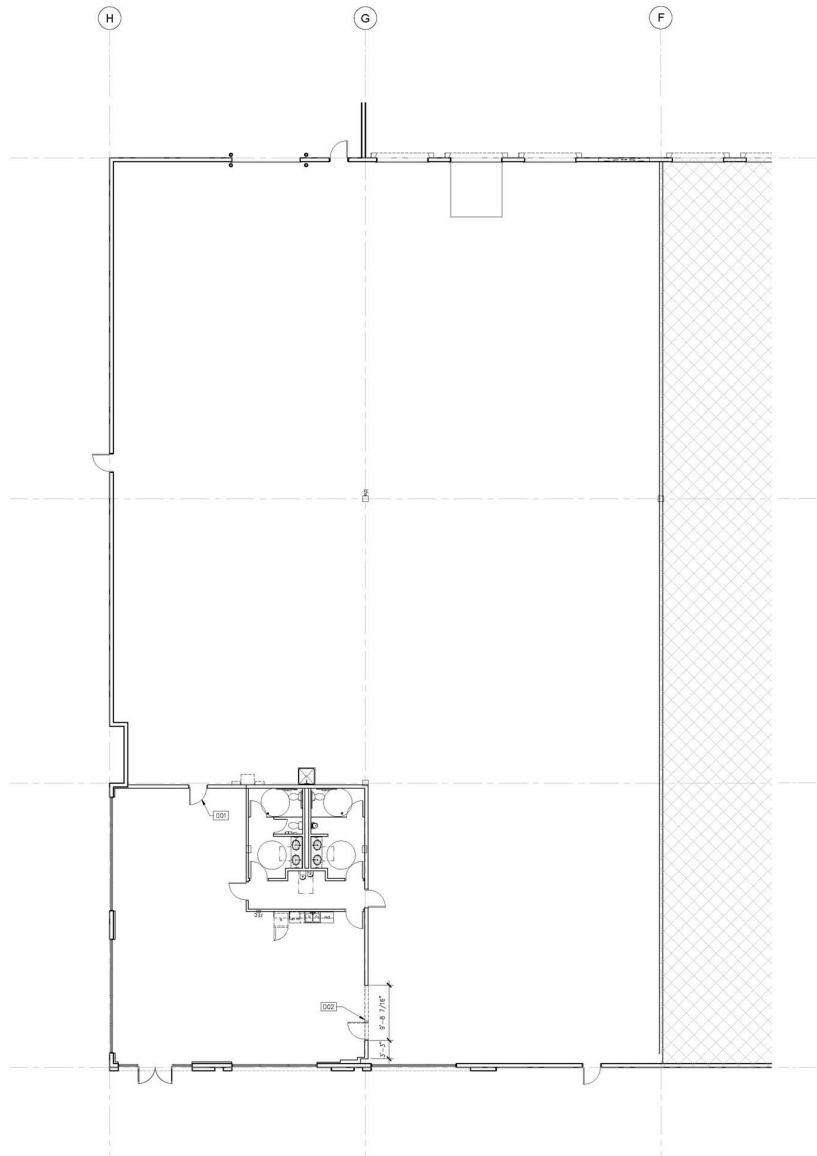
Sam Slaton
303.517.5183
sslaton@lpc.com

Lincoln

ELEVATE AT CENTRAL CENTENNIAL

Suite 100

7173 S Revere Pkwy | Centennial, CO 80112



Suite	Size	Lease Rate
Suite 100	15,663 SF	\$13.50 NNN

Mark Dwyer **Sam Slaton**
303.877.1620 303.517.5183
mdwyer@lpc.com sslaton@lpc.com

Lincoln



ELEVATE AT CENTRAL CENTENNIAL

7173 S Revere Pkwy
Centennial, CO 80112

For Leasing Information, contact:

Mark Dwyer
303.877.1620
mdwyer@lpc.com

Sam Slaton
303.517.5183
sslaton@lpc.com

Lincoln

Lincoln Property Company
2000 S Colorado Blvd, Tower 3, Suite 825
Denver, CO 80222

www.lpc.com