

**Building Size:**

14,793 SF

Warehouse: 11,457 SF

Office: 3,336 SF

**CONTACT US**

**William Riedel**

Associate  
+1 801 652 1105  
william.riedel@colliers.com

**Colliers**

6440 S. Millrock Dr., Suite 500  
Salt Lake City, UT 84121  
Main: +1 801 947 8300  
colliers.com

**For Sale**

3035 S. 3600 W.

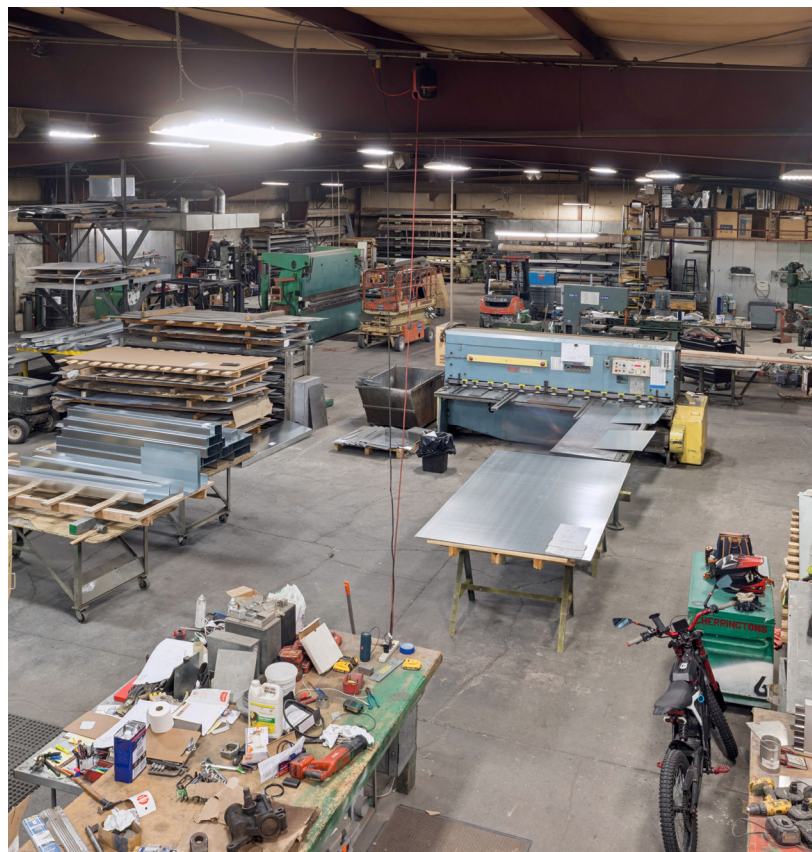
West Valley City, Utah 84119

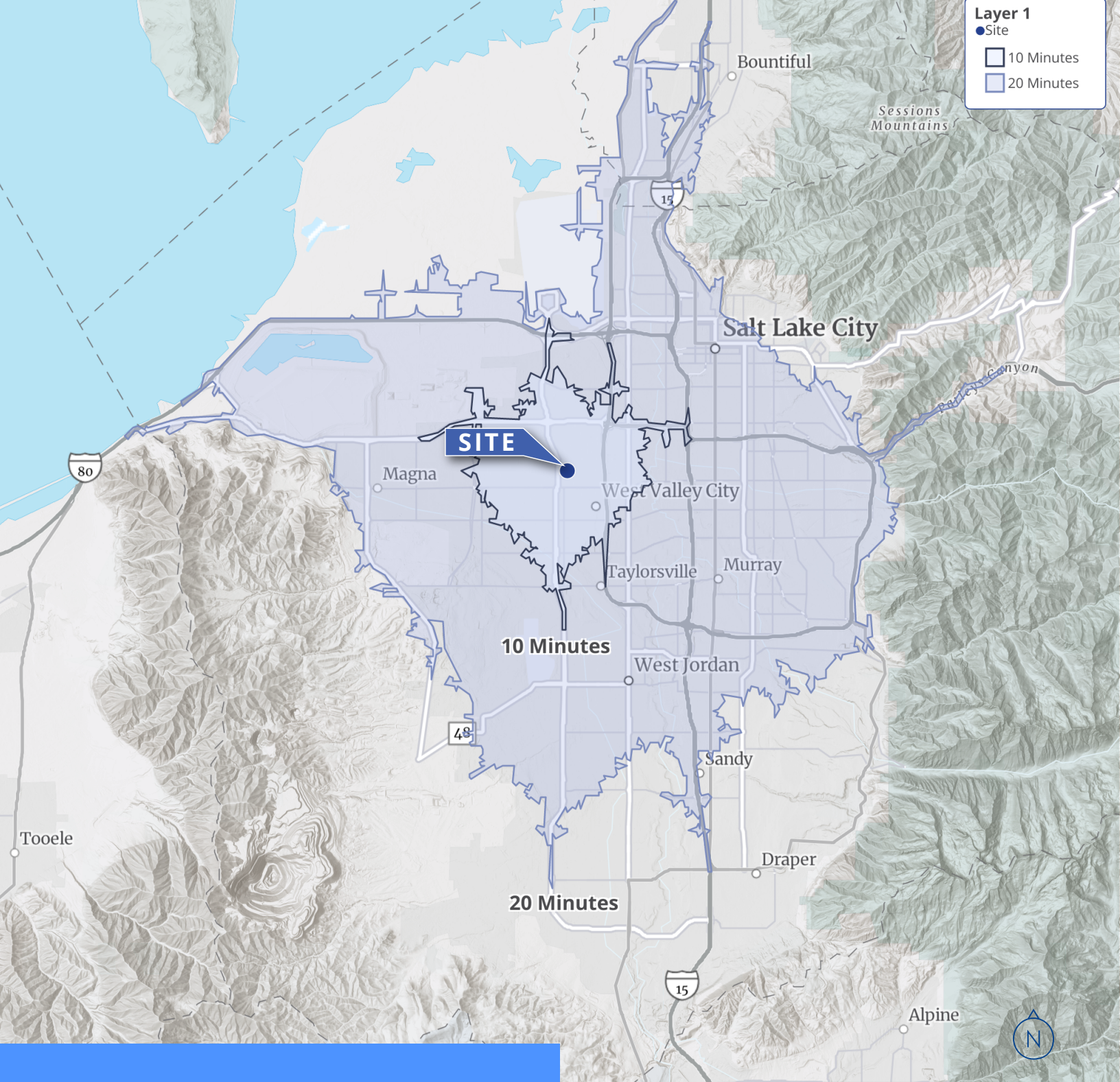
**Sale Price: \$2,800,000 (\$189/SF)**

**Property Details**

- Land Area: 1.04 AC
- Paved concrete yard space
- Zoning: M
- Clear Height: 15'-18'
- Grade Level Door: (1) 12' x 14'
- 3-Phase Power

# Property Photos





**CONTACT US**

**William Riedel**  
 Associate  
 +1 801 652 1105  
 william.riedel@colliers.com



This document has been prepared by Colliers International for advertising and general information only. Colliers International makes no guarantees, representations or warranties of any kind, expressed or implied, regarding the information including, but not limited to, warranties of content, accuracy and reliability. Any interested party should undertake their own inquiries as to the accuracy of the information. Colliers International excludes unequivocally all inferred or implied terms, conditions and warranties arising out of this document and excludes all liability for loss and damages arising there from. This publication is the copyrighted property of Colliers International and/or its licensor(s). ©2025. All rights reserved.

**Colliers**  
 6440 S. Millrock Dr., Suite 500  
 Salt Lake City, UT 84121  
 Main: +1 801 947 8300  
 colliers.com