

ALL PROPERTIES ARE OWNER MANAGED AND  
STRATEGICALLY LOCATED MINUTES FROM A MAJOR INTERSTATE  
IN THE EAST BAY AND CENTRAL VALLEY.

**Right Space. Best Place.**

[www.cranbrookgroup.com](http://www.cranbrookgroup.com)

## COMMERCE PARK WEST

[3380-3480 Industrial Boulevard, West Sacramento, CA 95691](#)

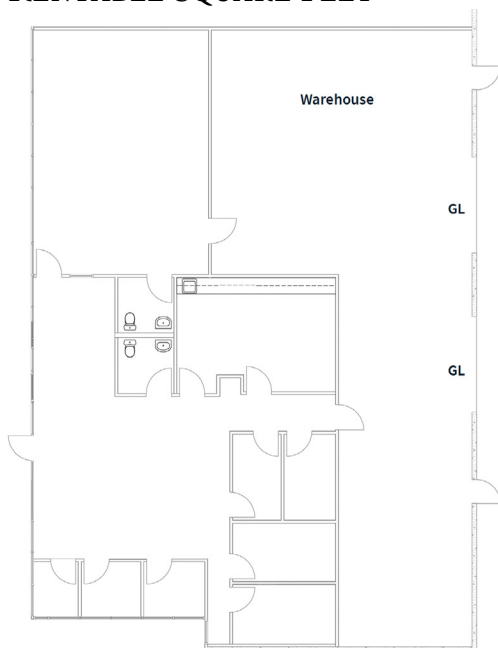


### SEE & LEARN MORE ...

Go to [cranbrookgroup.com](http://cranbrookgroup.com) to view more photos and get more information about Commerce Park West and our company!

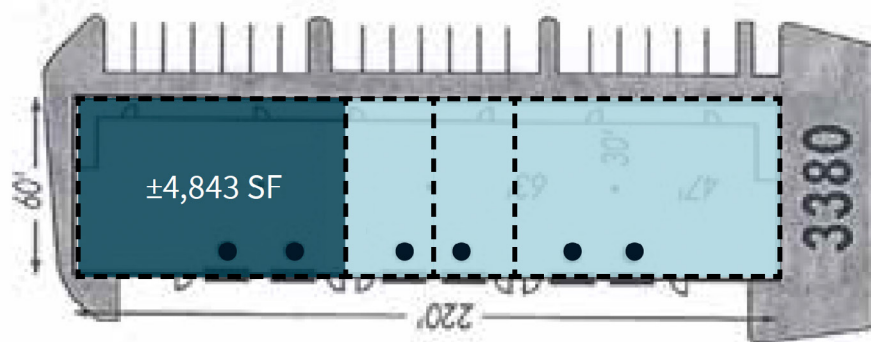
## SUITE 3380-105

± 4,843 RENTABLE SQUARE FEET



## FLOOR KEY PLAN

AVAILABLE SUITE IN BLUE BELOW



- Grade Level Door

The information contained herein is based on reliable data, measurements and calculations. We have no reason to doubt its accuracy, but we do not guarantee it. All information should be verified prior to purchase or lease.

For more information, please contact:



**Mike Luca**  
Senior Managing Director, JLL  
C: (916) 214-0466  
[mike.luca@jll.com](mailto:mike.luca@jll.com)  
DRE #01447904

**Dominic Smith**  
Senior Associate, JLL  
C: (916) 995-9396  
[dominic.smith@jll.com](mailto:dominic.smith@jll.com)  
DRE #01447904



**Chris Wight**  
Director of Brokerage | Senior Property Manager  
O: (209) 549-4960 x 117 | C: (415) 350-1430  
[cwight@cranbrookgroup.com](mailto:cwight@cranbrookgroup.com)  
DRE #00935049