

For Lease

747 S. 13th Street
Boise, ID 83702

Property Type	Office / Flex
Building Size	9,540 SF
Land Size	.550 Acres
Parking	Ample
Lease Type	FSEJ
Ceilings	12' up to 22' tall
Grade Level Door	1 - 12'x 12'

Highlights

- Fantastic downtown location
- Mix of open area office/showroom (2,750 SF) and warehouse (2,500 SF)
- Great parking ratio
- Lots of natural light
- Available ASAP
- Contact agent for showing

Space Available

Suite	Size	Rate
110	5,250 SF	\$15.60 FSEJ

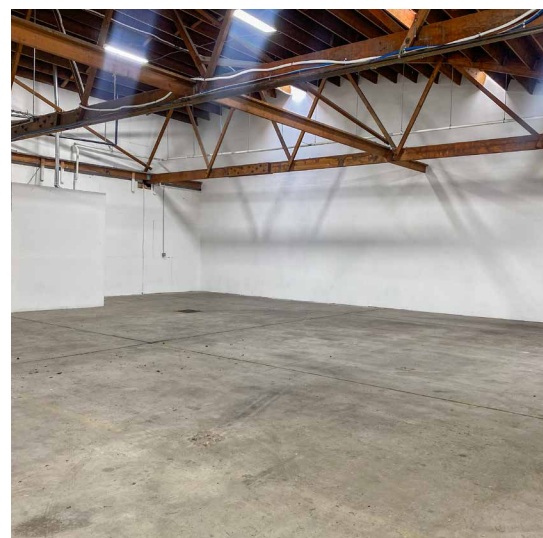
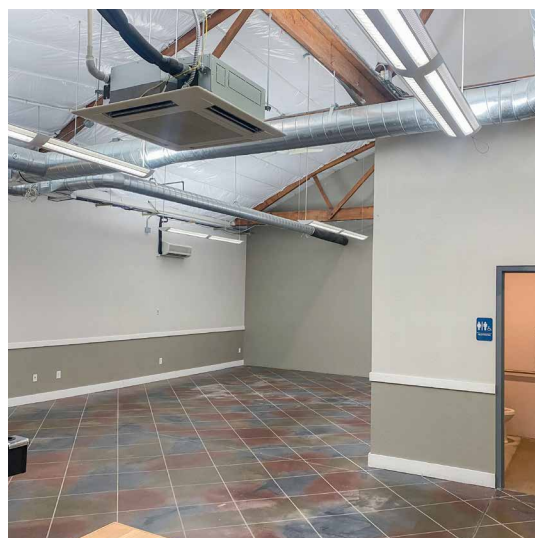
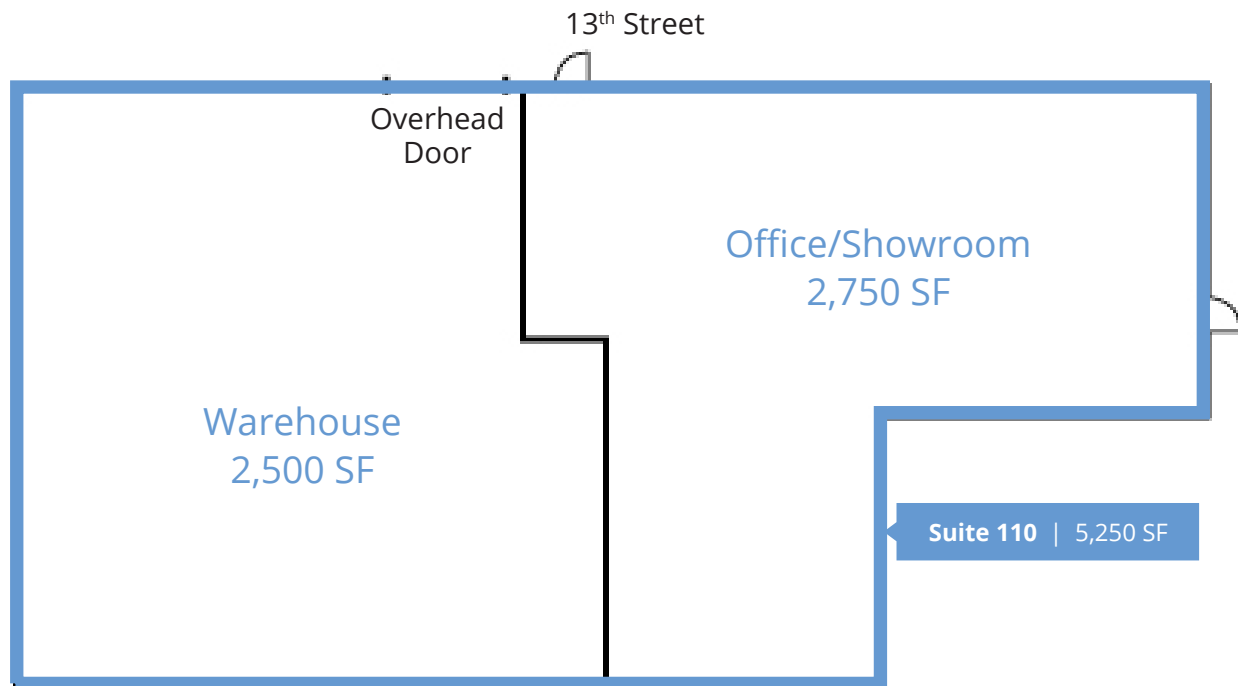
Contact

Kyle Uhlenkott
208 489 6176
kyle.uhlenkott@colliers.com

Michael McNeight
208 472 2865
michael.mcneight@colliers.com

For Lease

Floor Plan

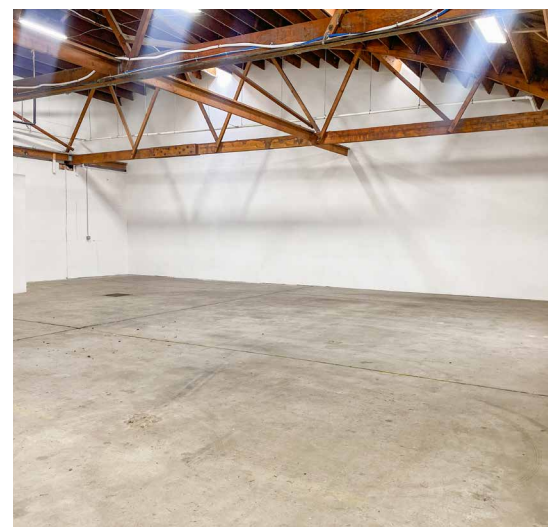
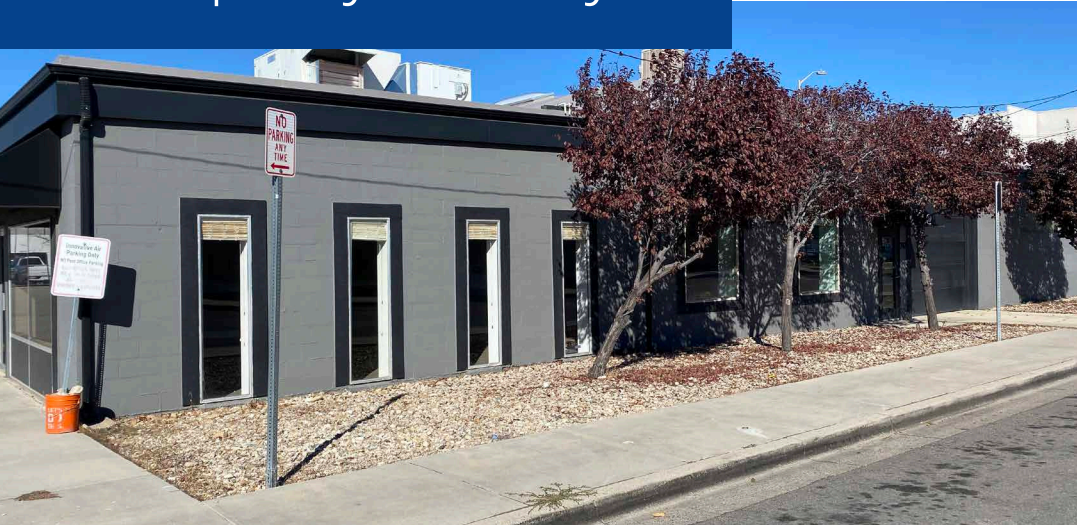


Kyle Uhlenkott
208 489 6176
kyle.uhlenkott@colliers.com

Michael McNeight
208 472 2865
michael.mcneight@colliers.com



Property Gallery

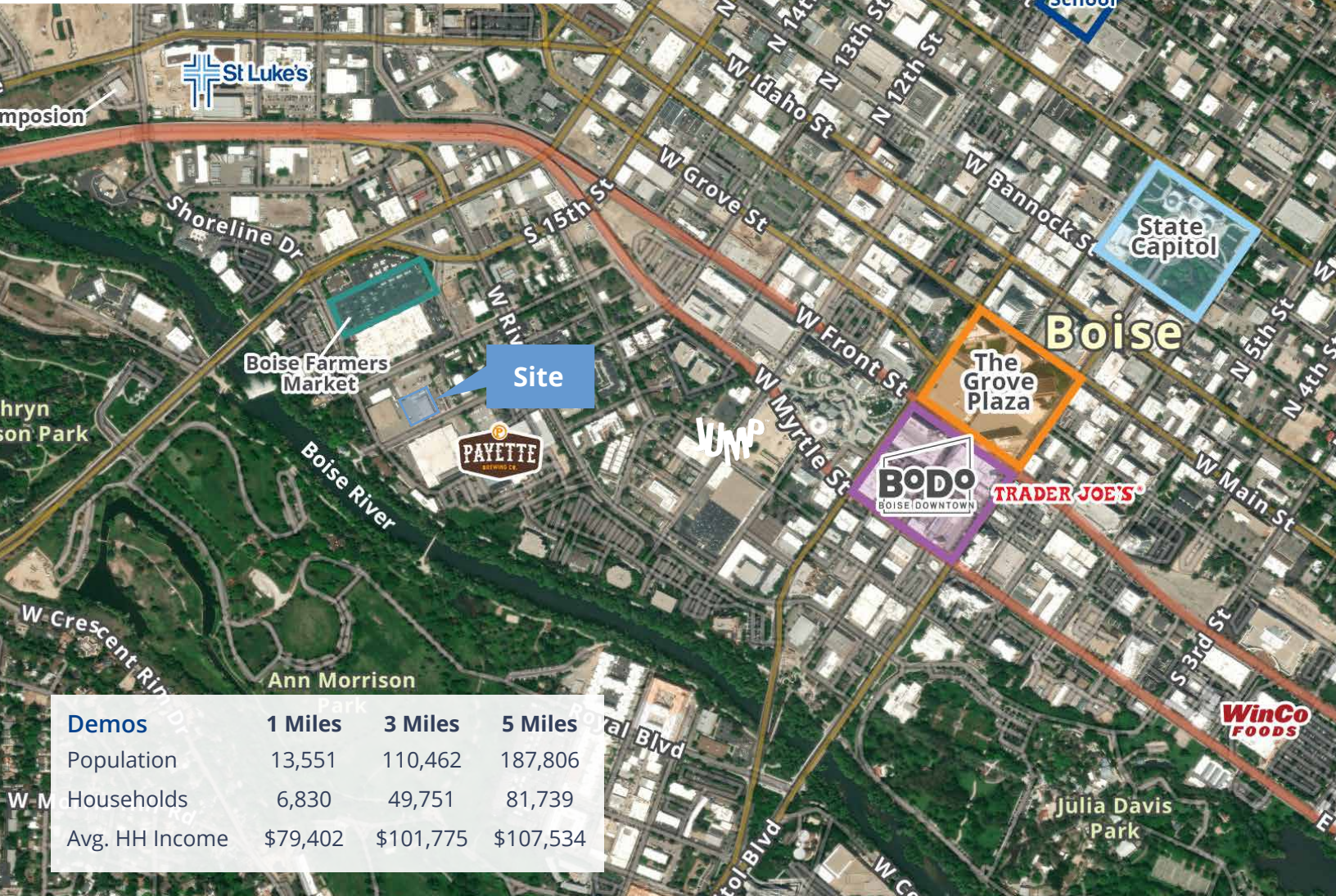
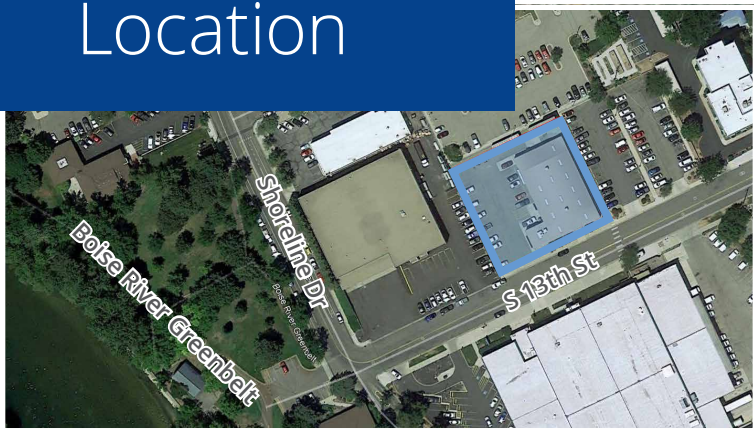


Kyle Uhlenkott
208 489 6176
kyle.uhlenkott@colliers.com

Michael McNeight
208 472 2865
michael.mcneight@colliers.com



Location



Demos	1 Miles	3 Miles	5 Miles
Population	13,551	110,462	187,806
Households	6,830	49,751	81,739
Avg. HH Income	\$79,402	\$101,775	\$107,534



755 West Front Street, Suite 300
 Boise, Idaho 83702
 208 345 9000
colliers.com/idaho

Contact Us:

Kyle Uhlenkott
 208 489 6176
kyle.uhlenkott@colliers.com

Michael McNeight
 208 472 2865
michael.mcneight@colliers.com