

CRANBERRY CORPORATE CENTER - BLDG 260

260 EXECUTIVE DRIVE, CRANBERRY TOWNSHIP, PA 16066

FOR LEASE

6,774 SF FLEX SUITE

High Visibility Cranberry Location



1.5 miles



1.5 miles



0.5 miles



0.5 mile

FOR MORE INFORMATION:

RICH GASPERINI
rgasperini@genforrealestate.com
D 412.564.0752 | C 412.651.6888

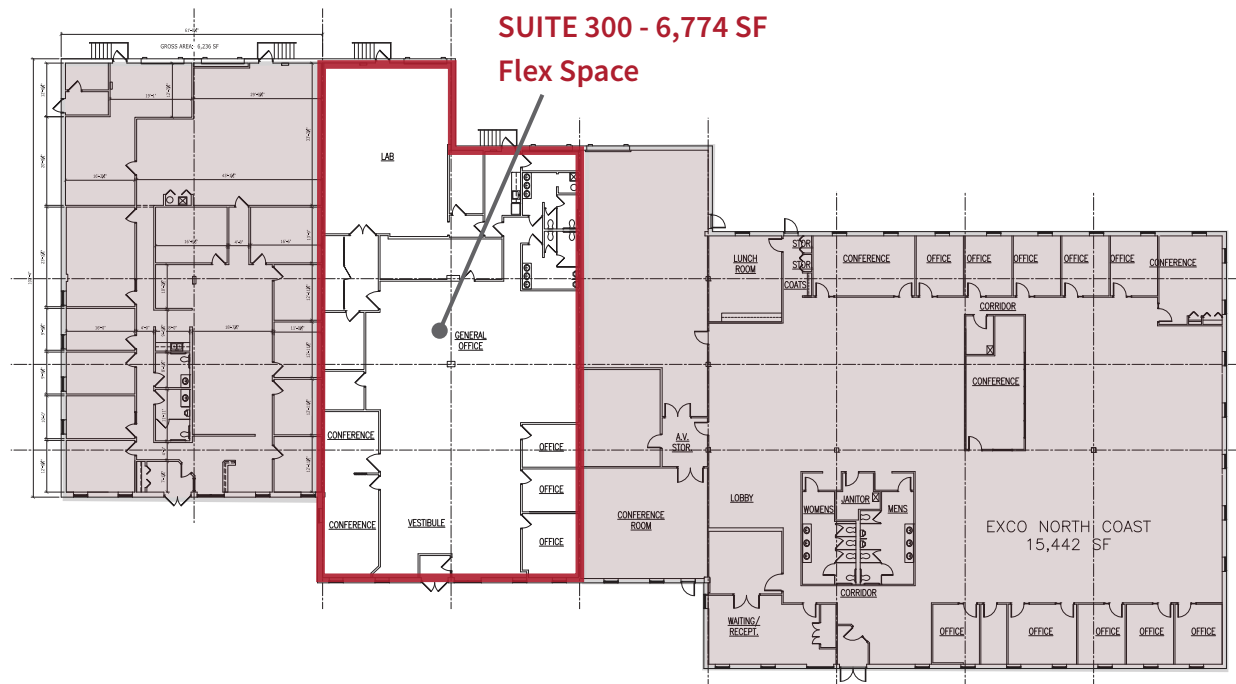
CONNOR JANGRO
cjangro@genforrealestate.com
D 412.564.0776 | C 412.805.7064



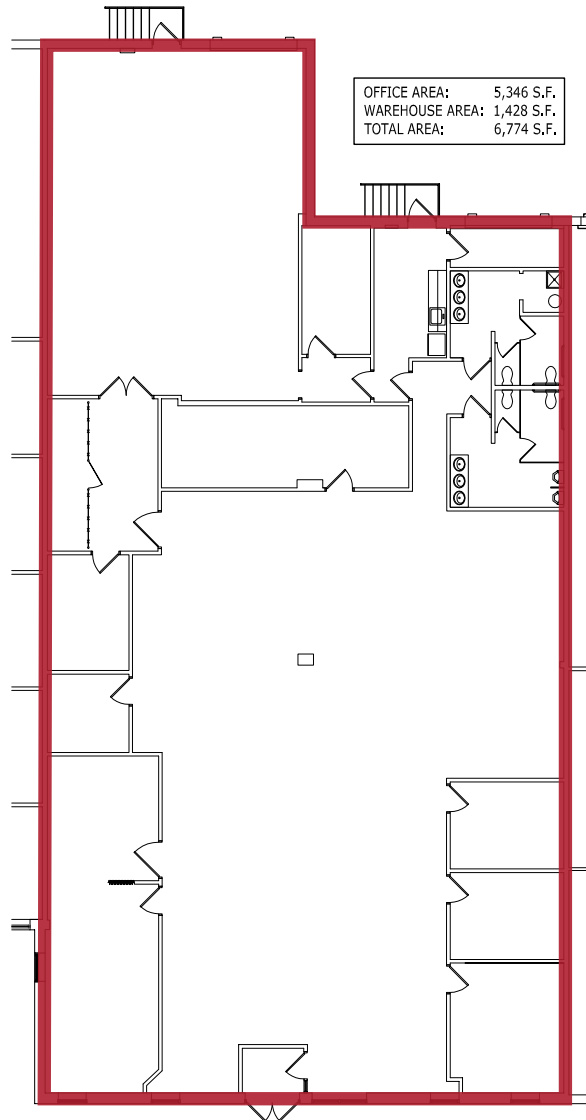
260 EXECUTIVE DRIVE | CRANBERRY CORPORATE CENTER

PROPERTY HIGHLIGHTS

- Building 260 has 83 car parking spaces (2.96 per 1,000 SF)
- Quality flex space in the heart of Cranberry Township, PA
- High visibility Cranberry location
- Excellent access to I-79, I-76/PA Turnpike, Route 228, Route 19 and Cranberry Township Amenities
- Ideal for flex, tech, R&D, light manufacturing, warehouse/ showroom, first floor office space
- Professional Landlord - Cranberry Corporate Center is comprised of six (6) buildings totaling 215,000 SF all owned and managed by Silk & Stewart Development Group.



260 EXECUTIVE DRIVE | CRANBERRY CORPORATE CENTER



SUITE 300 - FLEX SPACE

- 6,774 SF total
 - 5,346 SF of office space
 - 1,428 SF of warehouse space
- One (1) dock door
- Mix of open and private offices, conference rooms and a kitchenette



260 EXECUTIVE DRIVE - SUITE 300

FOR LEASE



CRANBERRY CORPORATE CENTER

NEARBY AMENITIES



CRANBERRY CORPORATE CENTER



Please contact the leasing team for more information:

RICH GASPERINI
rgasperini@genforrealestate.com
D 412.564.0752 | C 412.651.6888

CONNOR JANGRO
cjangro@genforrealestate.com
D 412.564.0776 | C 412.805.7064

GENFOR REAL ESTATE
One Altoona Place, Suite 2A
Pittsburgh, PA 15228
Office: 412.564.0750
www.genforrealestate.com

OWNED BY:



LEASING BY:



All information contained herein has been obtained from sources deemed reliable and Genfor, LLC does not doubt its accuracy; however, Genfor, LLC makes no guarantee, representation or warranty of any kind or nature, either express or limited, with respect to the accuracy or completeness of all or any portion of the information contained herein. Terms of availability of this property are subject to change and this property may be withdrawn without notice.