

PRIME OFFICE SPACE WESTLAKE VILLAGE

2,956 SF AVAILABLE FOR SUBLEASE

AVAILABLE
FOR SUBLEASE

\$2.60/SF
+ 398/MO
CAM FEES



PROPERTY DETAILS

- **Sublease Term:** Until August 30, 2025
- **Parking:** Unreserved 4/1000 parking ratio
- **Offices:** 8 private offices with reception and conference area
- **Views:** Executive office suites with gorgeous lake views
- **Ideal For:** Professional offices seeking a serene and prestigious location

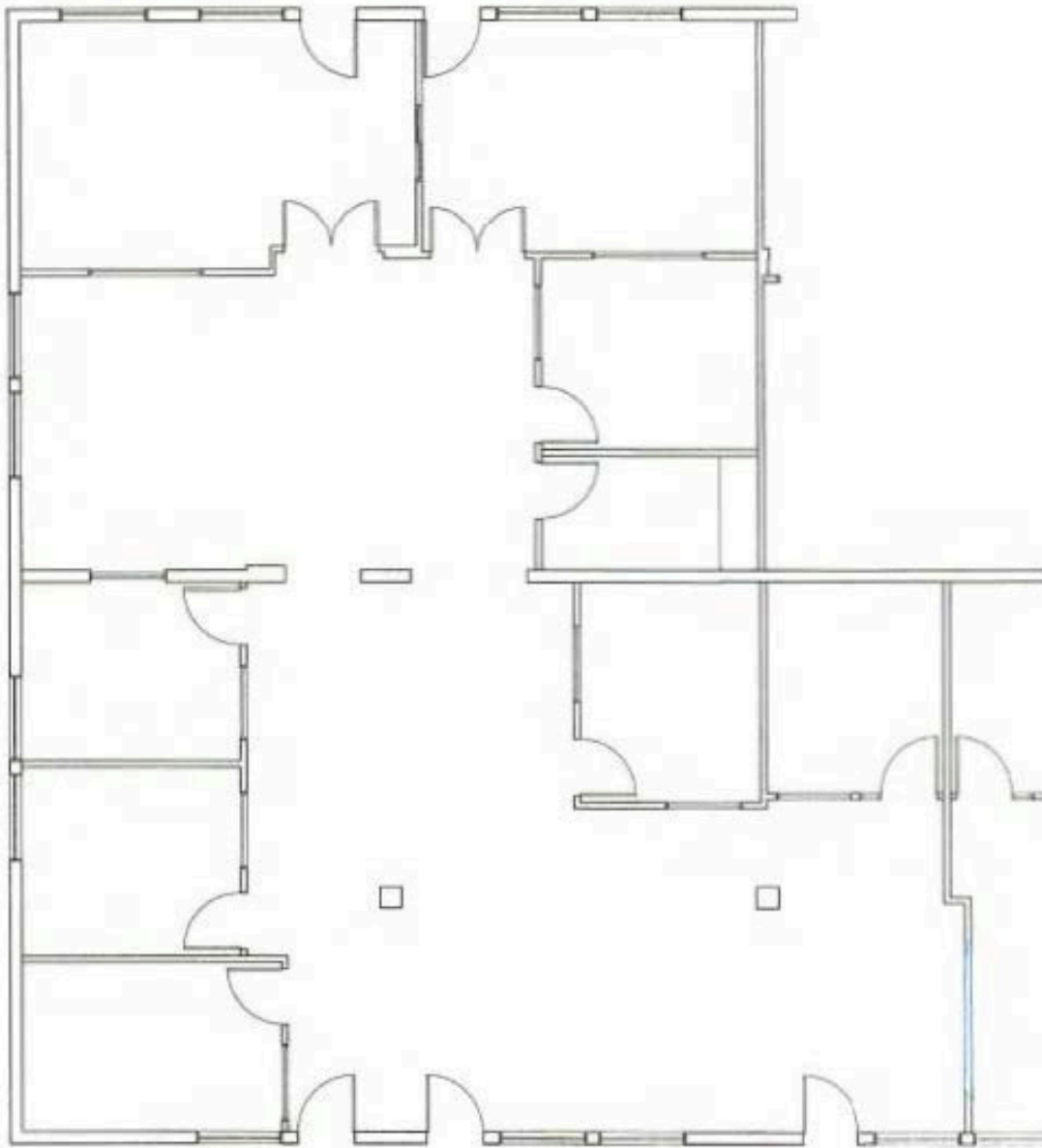
GET IN TOUCH

 **FEDER & ASSOCIATES**
COMMERCIAL REAL ESTATE
SERVICE BEYOND EXPECTATION®

RON FEDER
Senior Managing Director | DRE# 00983855
(818) 222-0404
RFEDER@RJFEDER.COM

BROOKE FEDER-KENRICK
Commercial Associate | DRE# 02199320
(818) 451-3636
BKENRICK@RJFEDER.COM





NORTH



SUITE #126 AS-BUILT PLAN
32107 LINDERO CANYON RD.

SUITE #126
±2,956 R.S.F.

JUNE 16, 2022



 **FEDER & ASSOCIATES**
COMMERCIAL REAL ESTATE
SERVICE BEYOND EXPECTATION®

